



TEMPORARY ABANDONMENT WELL APPLICATION

All blanks must be complete

OPERATOR: License# _____
Name: _____
Address 1: _____
Address 2: _____
City: _____ State: _____ Zip: _____ + _____
Contact Person: _____
Phone: (_____) _____
Contact Person Email: _____
Field Contact Person: _____
Field Contact Person Phone: (_____) _____

API No. 15- _____
Spot Description: _____
____ - ____ - ____ - ____ Sec. _____ Twp. _____ S. R. _____ E W
_____ feet from N / S Line of Section
_____ feet from E / W Line of Section
GPS Location: Lat: _____, Long: _____
(e.g. xx.xxxxx) (e.g. -xxx.xxxxx)
Datum: NAD27 NAD83 WGS84
County: _____ Elevation: _____ GL KB
Lease Name: _____ Well #: _____
Well Type: (check one) Oil Gas OG WSW Other: _____
 SWD Permit #: _____ ENHR Permit #: _____
 Gas Storage Permit #: _____
Spud Date: _____ Date Shut-In: _____

| | Conductor | Surface | Production | Intermediate | Liner | Tubing |
|------------------|-----------|---------|------------|--------------|-------|--------|
| Size | | | | | | |
| Setting Depth | | | | | | |
| Amount of Cement | | | | | | |
| Top of Cement | | | | | | |
| Bottom of Cement | | | | | | |

Casing Fluid Level from Surface: _____ How Determined? _____ Date: _____
Casing Squeeze(s): _____ to _____ w / _____ sacks of cement, _____ to _____ w / _____ sacks of cement. Date: _____
(top) (bottom) (top) (bottom)
Do you have a valid Oil & Gas Lease? Yes No
Depth and Type: Junk in Hole at _____ Tools in Hole at _____ Casing Leaks: Yes No Depth of casing leak(s): _____
(depth) (depth)
Type Completion: ALT. I ALT. II Depth of: DV Tool: _____ w / _____ sacks of cement Port Collar: _____ w / _____ sack of cement
(depth) (depth)
Packer Type: _____ Size: _____ Inch Set at: _____ Feet
Total Depth: _____ Plug Back Depth: _____ Plug Back Method: _____

Geological Data:

| Formation Name | Formation Top | Formation Base | Completion Information |
|----------------|---------------|----------------|--|
| 1. _____ | At: _____ | to _____ Feet | Perforation Interval _____ to _____ Feet or Open Hole Interval _____ to _____ Feet |
| 2. _____ | At: _____ | to _____ Feet | Perforation Interval _____ to _____ Feet or Open Hole Interval _____ to _____ Feet |

UNDER PENALTY OF PERJURY I HEREBY ATTEST THAT THE INFORMATION CONTAINED HEREIN IS TRUE AND CORRECT TO THE BEST OF MY KNOWLEDGE

Submitted Electronically

Do NOT Write in This Space - KCC USE ONLY

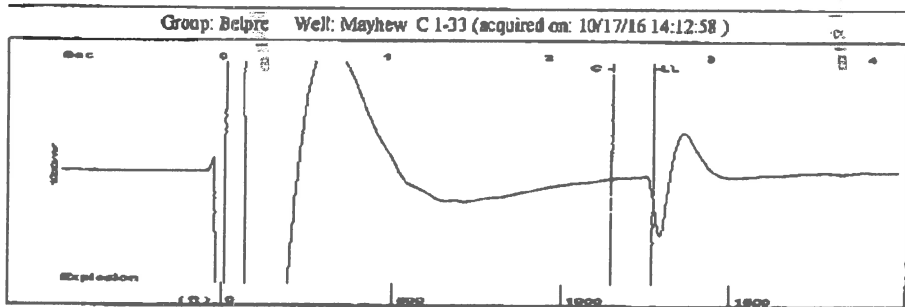
Date Tested: _____ Results: _____ Date Plugged: _____ Date Repaired: _____ Date Put Back in Service: _____

Review Completed by: _____ Comments: _____

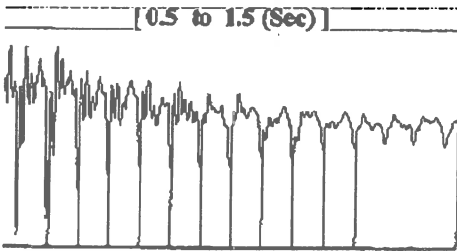
TA Approved: Yes Denied Date: _____

Mail to the Appropriate KCC Conservation Office:

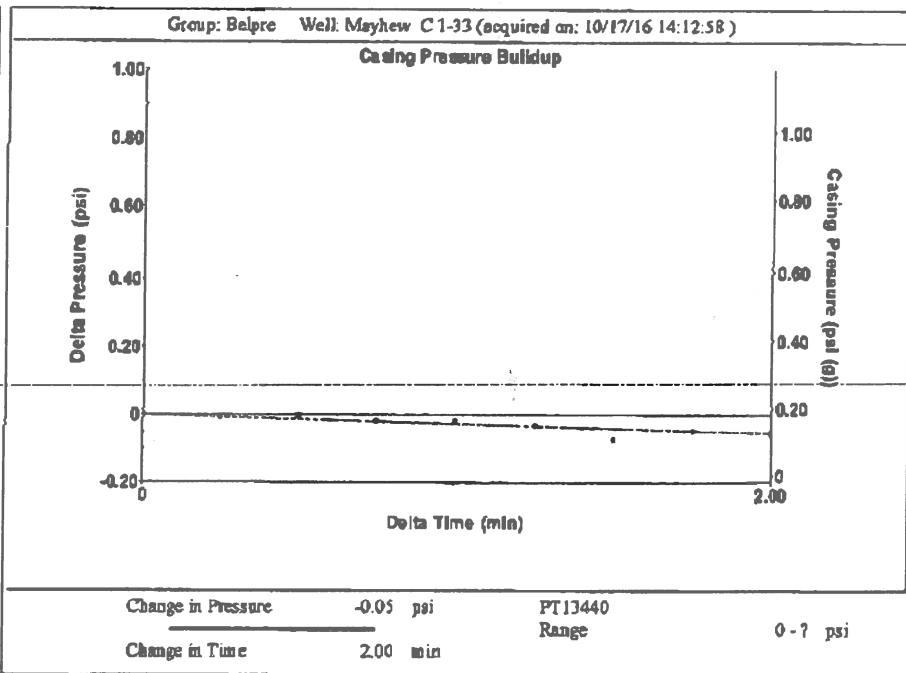
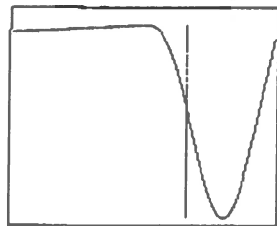
| | | |
|--|--|--------------------|
| | KCC District Office #1 - 210 E. Frontview, Suite A, Dodge City, KS 67801 | Phone 620.225.8888 |
| | KCC District Office #2 - 3450 N. Rock Road, Building 600, Suite 601, Wichita, KS 67226 | Phone 316.337.7400 |
| | KCC District Office #3 - 1500 SW Seventh Steet, Chanute, KS 66720 | Phone 620.432.2300 |
| | KCC District Office #4 - 2301 E. 13th Street, Hays, KS 67601-2651 | Phone 785.625.0550 |



Filter Type High Pass Automatic Collar Count Yes Time 2.659 sec
 Manual Acoustic Velocity 942.051 ft/s Manual JTS/sec 14.8588 Joints 40.0603 Jts
 Depth 1269.91 ft

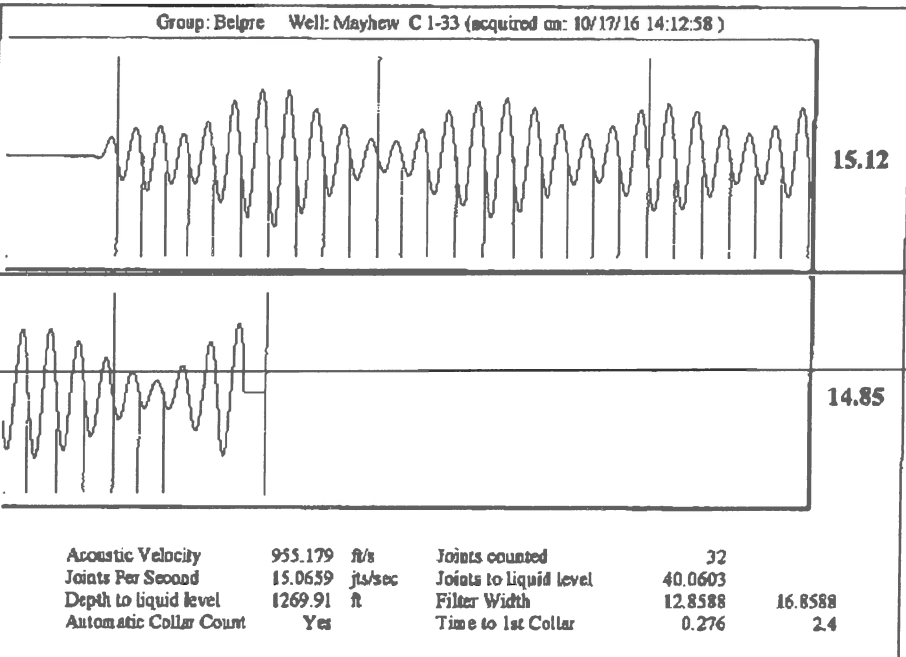


Analysis Method: Automatic



Change in Pressure -0.05 psi PT13440
 Change in Time 2.00 min Range 0 - 1 psi

| Production | | Casing Pressure | | Producing | |
|--------------------------------------|--------------|-------------------------------|--|------------------|----------|
| Current | Potential | | | | |
| Oil -.- | -.- BBL/D | 0.2 psi (g) | | | |
| Water -.- | -.- BBL/D | Casing Pressure Buildup | | Annular Gas Flow | 0 Mscf/D |
| Gas -.- | -.- Mscf/D | -0.054 psi | | % Liquid | 100 % |
| | | 2.00 min | | | |
| IPR Method | Vogel | Gas/Liquid Interface Pressure | | | |
| PBHP/SBHP | -.- | 0.9 psi (g) | | | |
| Production Efficiency | 0.0 | Liquid Level Depth | | | |
| Oil 40 deg API | | 1269.91 ft | | | |
| Water 1.05 Sp.Gr.H2O | | Pump Intake Depth | | | |
| Gas 1.01 Sp.Gr.AIR | | 4096.00 ft | | | |
| Acoustic Velocity | 955.179 ft/s | Formation Depth | | | |
| | | 4096.00 ft | | | |
| Formation Submergence | | Pump Intake | | | |
| Total Gaseous Liquid Column HT (TVD) | 2826 ft | 929.5 psi (g) | | | |
| Equivalent Gas Free Liquid HT (TVD) | 2826 ft | Producing BHP | | | |
| | | 929.5 psi (g) | | | |
| Acoustic Test | | Static BHP | | | |
| | | -.- psi (g) | | | |



Acoustic Velocity 955.179 ft/s Joints counted 32
 Joints Per Second 15.0639 Jts/sec Joints to liquid level 40.0603
 Depth to liquid level 1269.91 ft Filter Width 12.8588 16.8588
 Automatic Collar Count Yes Time to 1st Collar 0.276 2.4

Conservation Division
District Office No. 1
210 E. Frontview, Suite A
Dodge City, KS 67801



Phone: 620-225-8888
Fax: 620-225-8885
<http://kcc.ks.gov/>

Jay Scott Emler, Chairman
Shari Feist Albrecht, Commissioner
Pat Apple, Commissioner

Sam Brownback, Governor

October 25, 2016

Loveness Mpanje
F. G. Holl Company L.L.C.
9431 E CENTRAL STE 100
WICHITA, KS 67206-2563

Re: Temporary Abandonment
API 15-047-20749-00-00
MAYHEW C 1-33
SW/4 Sec.33-25S-16W
Edwards County, Kansas

Dear Loveness Mpanje:

"Your temporary abandonment (TA) application for the well listed above has been approved. In accordance with K.A.R. 82-3-111 the TA status of this well will expire 10/25/2017.

- * If you return this well to service or plug it, please notify the District Office.
- * If you sell this well you are required to file a Transfer of Operator form, T-1.
- * If the well will remain temporarily abandoned, you must submit a new TA application, CP-111, before 10/25/2017.

You may contact me at the number above if you have questions.

Very truly yours,

Michael Maier"