



DRILL STEM TEST REPORT

Prepared For: **King Oil Operations**

1746 150th Ave.
Ellis KS 67637

ATTN: Jason Alm

Dustbowl #1-33

33-T11s-R32w Logan Co KS

Start Date: 2016.06.05 @ 01:06:15

End Date: 2016.06.05 @ 09:23:45

Job Ticket #: 64574 DST #: 1

Trilobite Testing, Inc

PO Box 362 Hays, KS 67601

ph: 785-625-4778 fax: 785-625-5620

Printed: 2016.06.11 @ 16:19:20

King Oil Operations
33-T11s-R32w Logan Co KS
Dustbowl #1-33
DSI # 1
LKC CJF
2016.06.05



**TRILOBITE
TESTING, INC**

DRILL STEM TEST REPORT

King Oil Operations

1746 150th Ave.
Ellis KS 67637

ATTN: Jason Alm

33-T11s-R32w Logan Co KS

Dustbowl #1-33

Job Ticket: 64574

DST#: 1

Test Start: 2016.06.05 @ 01:06:15

GENERAL INFORMATION:

Formation: **LKC C-F**

Deviated: No Whipstock: ft (KB)

Time Tool Opened: 03:38:00

Time Test Ended: 09:23:45

Test Type: Conventional Bottom Hole (Initial)

Tester: Mike Roberts

Unit No: 75

Interval: **4074.00 ft (KB) To 4160.00 ft (KB) (TVD)**

Total Depth: 4160.00 ft (KB) (TVD)

Hole Diameter: 7.88 inches Hole Condition: Fair

Reference Elevations: 3064.00 ft (KB)

3056.00 ft (CF)

KB to GR/CF: 8.00 ft

Serial #: 8737

Outside

Press@RunDepth: 403.30 psig @ 4076.00 ft (KB)

Start Date: 2016.06.05

End Date:

2016.06.05

Capacity: 8000.00 psig

Last Calib.: 2016.06.06

Start Time: 01:06:15

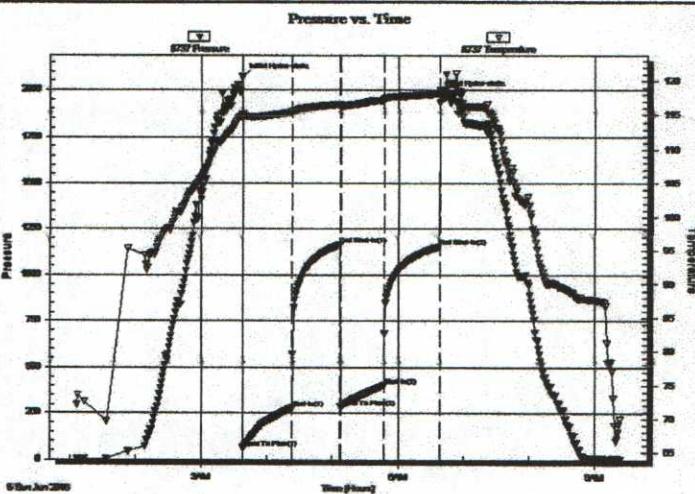
End Time:

09:23:45

Time On Btm: 2016.06.05 @ 03:37:45

Time Off Btm: 2016.06.05 @ 06:37:45

TEST COMMENT: IF:BOB in 30 min.
IS:No return blow
FF:BOB in 30 min.
FS:No return blow



PRESSURE SUMMARY

Time (Min.)	Pressure (psig)	Temp (deg F)	Annotation
0	2067.59	115.23	Initial Hydro-static
1	61.57	114.51	Open To Flow (1)
46	279.60	115.46	Shut-In(1)
90	1164.59	116.63	End Shut-In(1)
90	284.78	116.14	Open To Flow (2)
130	403.30	117.25	Shut-In(2)
180	1153.35	118.20	End Shut-In(2)
180	1973.77	118.73	Final Hydro-static

Recovery

Length (ft)	Description	Volume (bbl)
0.00	3" free oil	0.00
10.00	mcow 20% m 40% o 40% m	0.13
248.00	w com 20% w 30% o 50% m	3.12
186.00	ocmw 5% o 10% m 85% w	2.53
312.00	mcw 10% m 90% w	4.38

Gas Rates

	Choke (inches)	Pressure (psig)	Gas Rate (MMcf/d)



**TRILOBITE
TESTING, INC**

DRILL STEM TEST REPORT

TOOL DIAGRAM

King Oil Operations
1746 150th Ave.
Ellis KS 67637

ATTN: Jason Alm

33-T11s-R32w Logan Co KS
Dustbowl #1-33
Job Ticket: 64574 **DST#: 1**
Test Start: 2016.06.05 @ 01:06:15

Tool Information

Drill Pipe:	Length: 3755.00 ft	Diameter: 3.80 inches	Volume: 52.67 bbl	Tool Weight: 1500.00 lb
Heavy Wt. Pipe:	Length: 312.00 ft	Diameter: 3.60 inches	Volume: 3.93 bbl	Weight set on Packer: 25000.00 lb
Drill Collar:	Length: 0.00 ft	Diameter: 0.00 inches	Volume: 0.00 bbl	Weight to Pull Loose: 80000.00 lb
			Total Volume: 56.60 bbl	Tool Chased 0.00 ft
Drill Pipe Above KB:	14.00 ft			String Weight: Initial 52000.00 lb
Depth to Top Packer:	4074.00 ft			Final 56000.00 lb
Depth to Bottom Packer:	ft			
Interval between Packers:	7.00 ft			
Tool Length:	28.00 ft			
Number of Packers:	2	Diameter: 6.75 inches		

Tool Comments:

Tool Description	Length (ft)	Serial No.	Position	Depth (ft)	Accum. Lengths
Change Over Sub	1.00			4054.00	
Shut In Tool	5.00			4059.00	
Hydraulic tool	5.00			4064.00	
Packer	5.00			4069.00	21.00 Bottom Of Top Packer
Packer	5.00			4074.00	
Stubb	1.00			4075.00	
Perforations	1.00			4076.00	
Recorder	0.00	8646	Inside	4076.00	
Recorder	0.00	8737	Outside	4076.00	
Bullnose	5.00			4081.00	7.00 Bottom Packers & Anchor
Total Tool Length:	28.00				



**TRILOBITE
TESTING, INC**

DRILL STEM TEST REPORT

FLUID SUMMARY

King Oil Operations

33-T11s-R32w Logan Co KS

1746 150th Ave.
Ellis KS 67637

Dustbowl #1-33

Job Ticket: 64574

DST#: 1

ATTN: Jason Alm

Test Start: 2016.06.05 @ 01:06:15

Mud and Cushion Information

Mud Type: Gel Chem

Cushion Type:

Oil API:

0 deg API

Mud Weight: 9.00 lb/gal

Cushion Length:

ft

Water Salinity:

24000 ppm

Viscosity: 53.00 sec/qt

Cushion Volume:

bbbl

Water Loss: 7.95 in³

Gas Cushion Type:

Resistivity: 0.00 ohm.m

Gas Cushion Pressure:

psig

Salinity: 3000.00 ppm

Filter Cake: 1.00 inches

Recovery Information

Recovery Table

Length ft	Description	Volume bbl
0.00	3" free oil	0.000
10.00	mcow 20%m 40%o 40%m	0.126
248.00	w com 20%w 30%o 50%m	3.122
186.00	ocmw 5%o 10%m 85%w	2.531
312.00	mcw 10%m 90%w	4.377

Total Length: 756.00 ft Total Volume: 10.156 bbl

Num Fluid Samples: 0

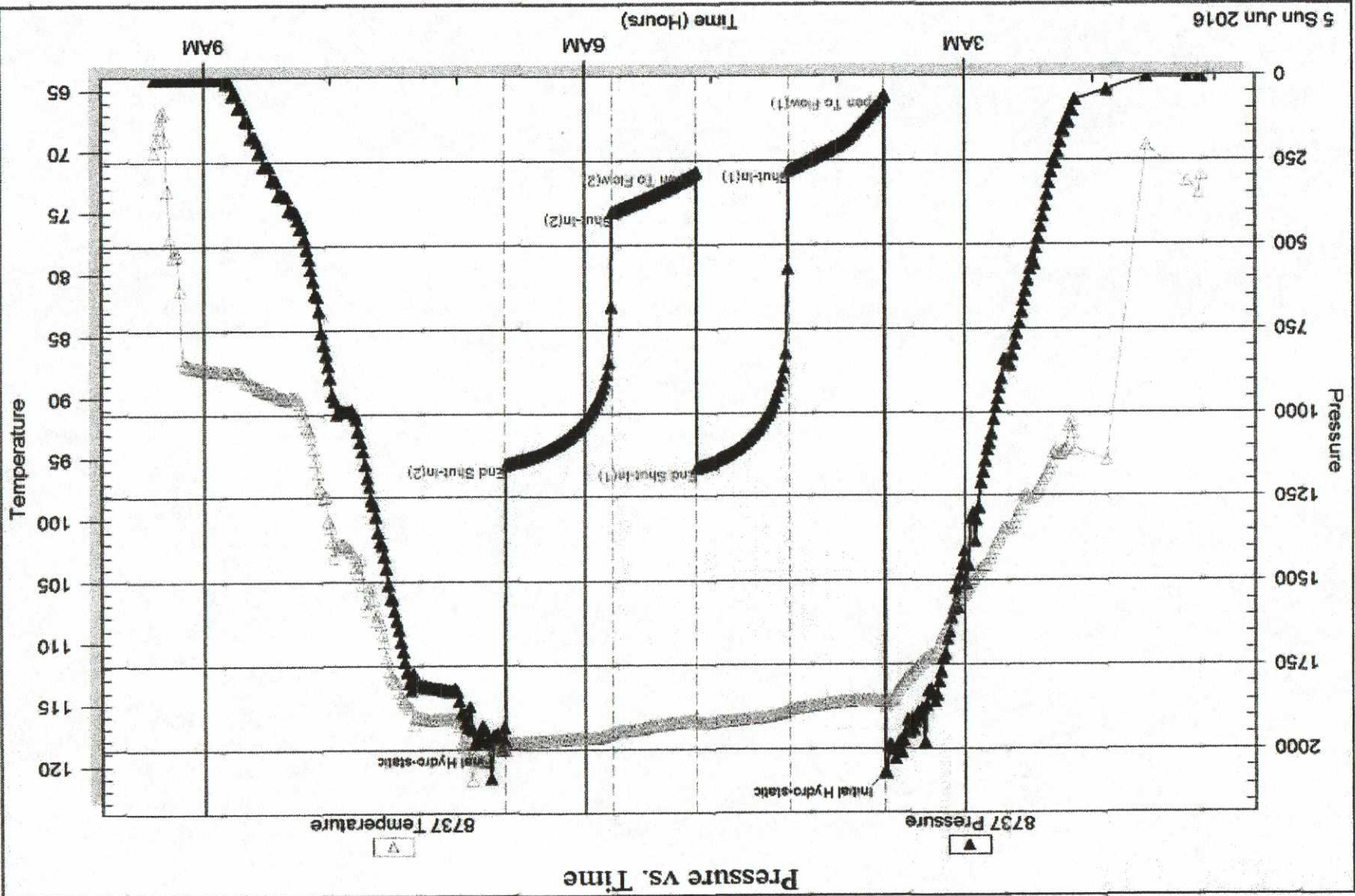
Num Gas Bombs: 0

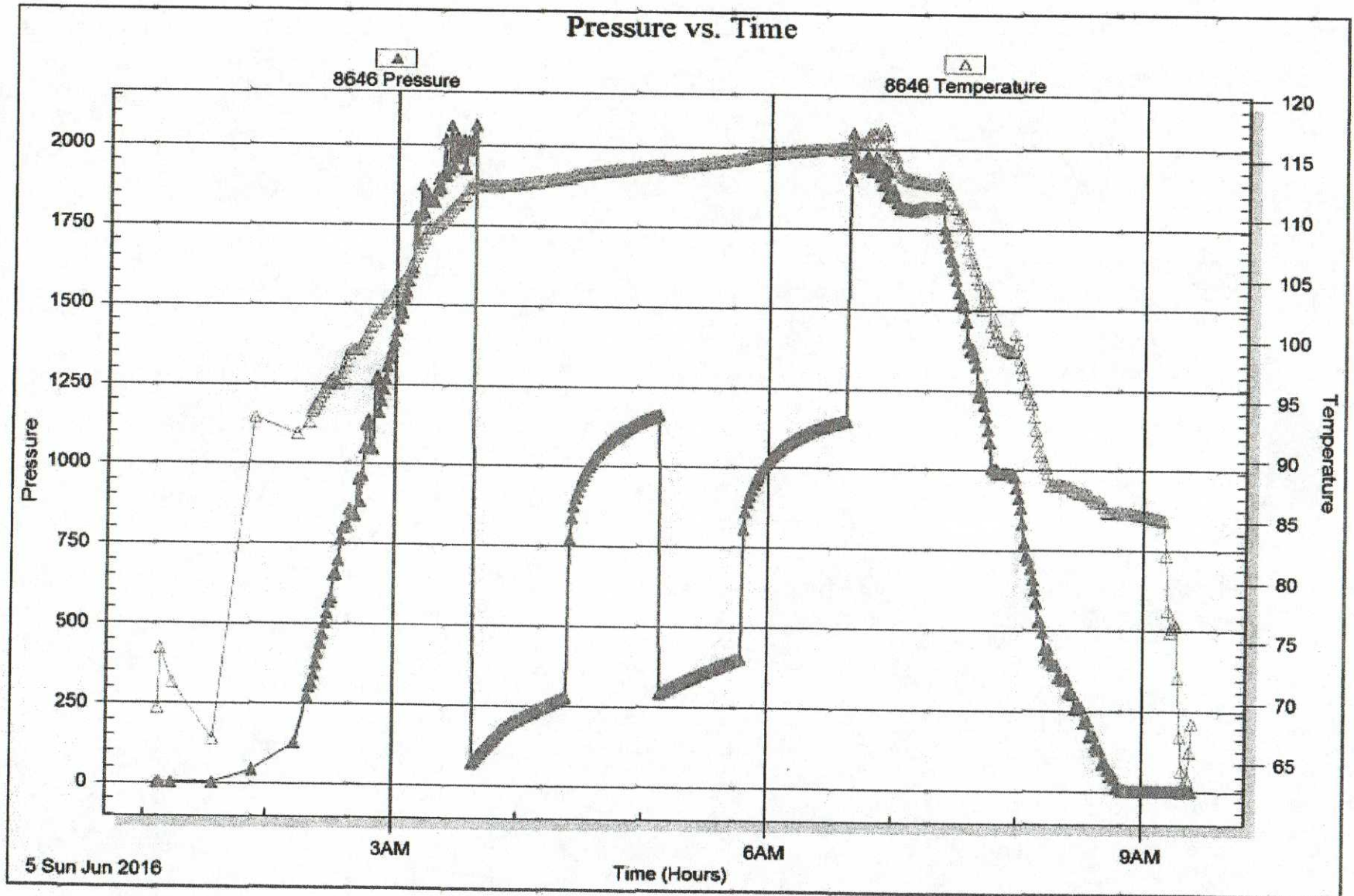
Serial#:

Laboratory Name:

Laboratory Location:

Recovery Comments: RW= .320@ 72.6*= 24,000 ppm







DRILL STEM TEST REPORT

Prepared For: **King Oil Operations**

1746 150th Ave.
Ellis KS 67637

ATTN: Jason Alm

Dustbowl #1-33

33-T11s-R32w Logan Co KS

Start Date: 2016.06.06 @ 20:23:15

End Date: 2016.06.07 @ 03:55:15

Job Ticket #: 64575 DST #: 2

Trilobite Testing, Inc

PO Box 362 Hays, KS 67601

ph: 785-625-4778 fax: 785-625-5620



**TRILOBITE
TESTING, INC.**

DRILL STEM TEST REPORT

King Oil Operations

1746 150th Ave.
Ellis KS 67637

ATTN: Jason Alm

33-T11s-R32w Logan Co KS

Dustbowl #1-33

Job Ticket: 64575

DST#: 2

Test Start: 2016.06.06 @ 20:23:15

GENERAL INFORMATION:

Formation: LKC "H"

Deviated: No Whipstock: ft (KB)

Time Tool Opened: 22:36:30

Time Test Ended: 03:55:15

Test Type: Conventional Bottom Hole (Reset)

Tester: Mike Roberts

Unit No: 75

Interval: 4182.00 ft (KB) To 4225.00 ft (KB) (TVD)

Total Depth: 4225.00 ft (KB) (TVD)

Hole Diameter: 7.88 inches Hole Condition: Fair

Reference Elevations: 3064.00 ft (KB)

3056.00 ft (CF)

KB to GR/CF: 8.00 ft

Serial #: 8737

Outside

Press@RunDepth: 680.77 psig @ 4220.00 ft (KB)

Start Date: 2016.06.06

End Date: 2016.06.07

Capacity: 8000.00 psig

Last Calib.: 2016.06.07

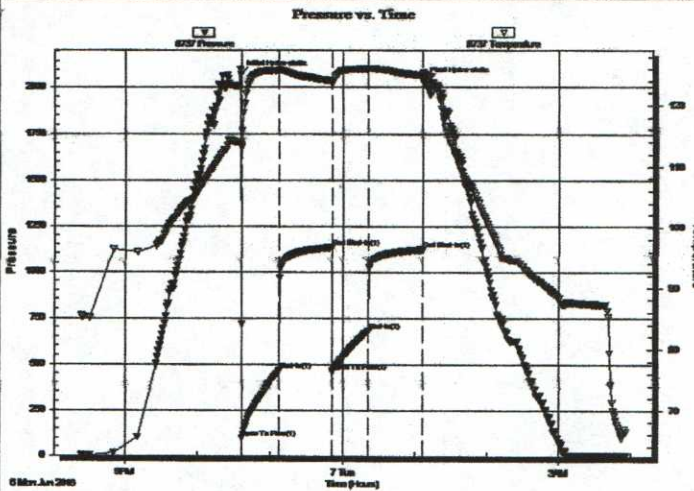
Start Time: 20:23:15

End Time: 03:55:15

Time On Btm: 2016.06.06 @ 22:36:00

Time Off Btm: 2016.06.07 @ 01:07:00

TEST COMMENT: IF:BOB in 2 min.
IS:No return blow
FF:BOB in 4 min.
FS:No return blow



PRESSURE SUMMARY

Time (Min.)	Pressure (psig)	Temp (deg F)	Annotation
0	2075.49	113.99	Initial Hydro-static
1	97.00	113.46	Open To Flow (1)
32	465.22	125.88	Shut-In(1)
76	1132.48	124.01	End Shut-In(1)
76	463.18	123.60	Open To Flow (2)
106	680.77	126.06	Shut-In(2)
151	1120.93	124.96	End Shut-In(2)
151	2039.54	125.42	Final Hydro-static

Recovery

Length (ft)	Description	Volume (bbl)
1118.00	mcsw 5% m 95% sw	15.23
288.00	mcw 50% m 50% sw	4.04

* Recovery from multiple tests

Gas Rates

	Choke (Inches)	Pressure (psig)	Gas Rate (MMcf/d)



**TRILOBITE
TESTING, INC**

DRILL STEM TEST REPORT

TOOL DIAGRAM

King Oil Operations

33-T11s-R32w Logan Co KS

1746 150th Ave.
Ellis KS 67637

Dustbowl #1-33

Job Ticket: 64575

DST#: 2

ATTN: Jason Alm

Test Start: 2016.06.06 @ 20:23:15

Tool Information

Drill Pipe:	Length: 3884.00 ft	Diameter: 3.80 inches	Volume: 54.48 bbl	Tool Weight: 1500.00 lb
Heavy Wt. Pipe:	Length: 312.00 ft	Diameter: 3.80 inches	Volume: 3.93 bbl	Weight set on Packer: 25000.00 lb
Drill Collar:	Length: 0.00 ft	Diameter: 0.00 inches	Volume: 0.00 bbl	Weight to Pull Loose: 80000.00 lb
			<u>Total Volume: 58.41 bbl</u>	Tool Chased 0.00 ft
Drill Pipe Above KB:	34.00 ft			String Weight: Initial 52000.00 lb
Depth to Top Packer:	4182.00 ft			Final 60000.00 lb
Depth to Bottom Packer:	ft			
Interval between Packers:	43.00 ft			
Tool Length:	63.00 ft			
Number of Packers:	2	Diameter: 6.75 inches		

Tool Comments:

Tool Description	Length (ft)	Serial No.	Position	Depth (ft)	Accum. Lengths
Change Over Sub	1.00			4163.00	
Shut In Tool	5.00			4168.00	
Hydraulic tool	5.00			4173.00	
Packer	5.00			4178.00	20.00 Bottom Of Top Packer
Packer	4.00			4182.00	
Stubb	1.00			4183.00	
Perforations	37.00			4220.00	
Recorder	0.00	8646	Inside	4220.00	
Recorder	0.00	8737	Outside	4220.00	
Bullnose	5.00			4225.00	43.00 Bottom Packers & Anchor
Total Tool Length:	63.00				



**TRILOBITE
TESTING, INC**

DRILL STEM TEST REPORT

FLUID SUMMARY

King Oil Operations

33-T11s-R32w Logan Co KS

1746 150th Ave.
Ellis KS 67637

Dustbowl #1-33

Job Ticket: 64575

DST#: 2

ATTN: Jason Alm

Test Start: 2016.06.06 @ 20:23:15

Mud and Cushion Information

Mud Type: Gel Chem

Cushion Type:

Oil API:

0 deg API

Mud Weight: 9.00 lb/gal

Cushion Length:

ft

Water Salinity:

27000 ppm

Viscosity: 54.00 sec/qt

Cushion Volume:

bbbl

Water Loss: 7.96 in³

Gas Cushion Type:

Resistivity: 0.00 ohm.m

Gas Cushion Pressure:

psig

Salinity: 4000.00 ppm

Filter Cake: 1.00 inches

Recovery Information

Recovery Table

Length ft	Description	Volume bbbl
1118.00	mcsw 5%m 95%sw	15.234
288.00	mcw 50%m 50%sw	4.040

Total Length: 1406.00 ft

Total Volume: 19.274 bbl

Num Fluid Samples: 0

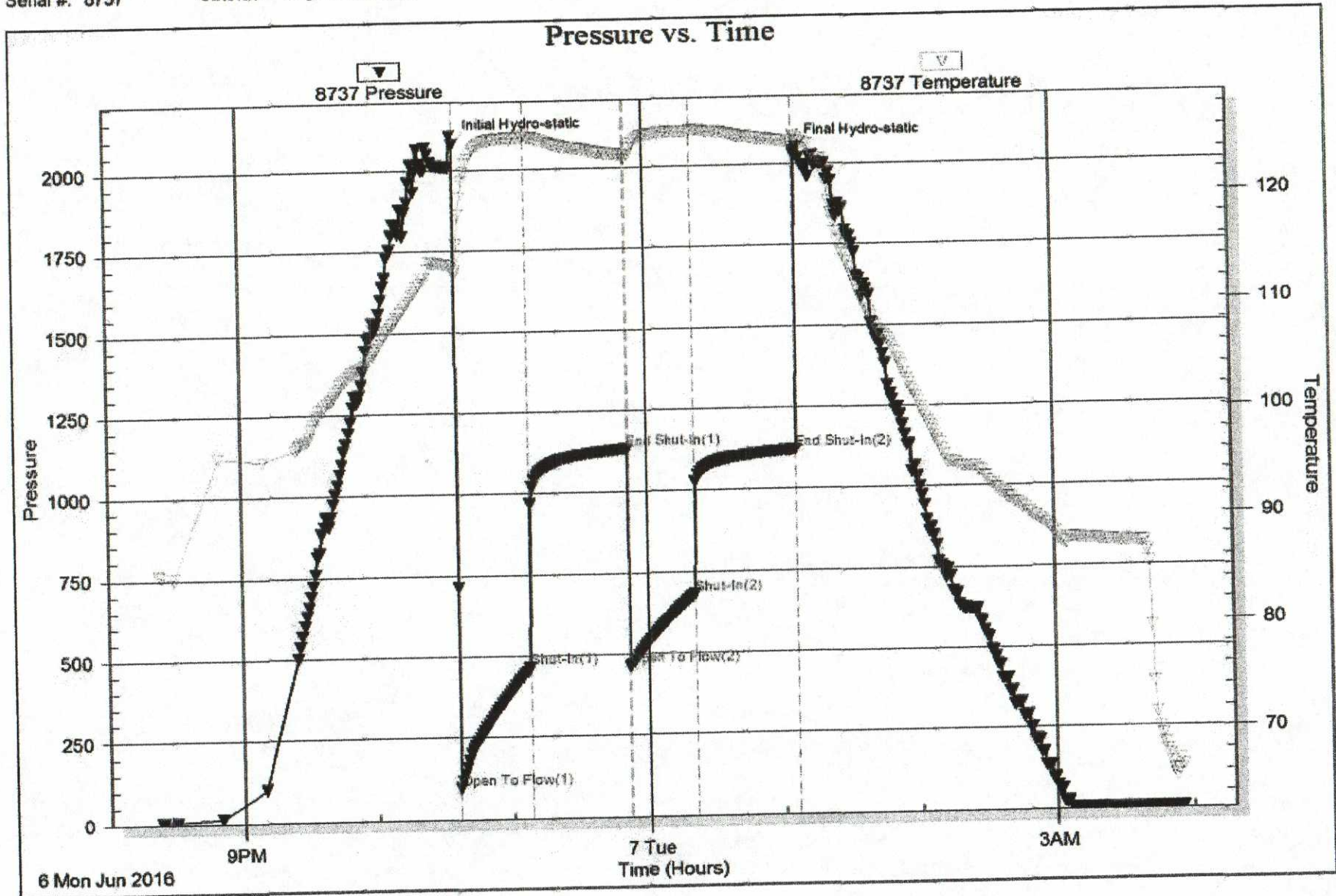
Num Gas Bombs: 0

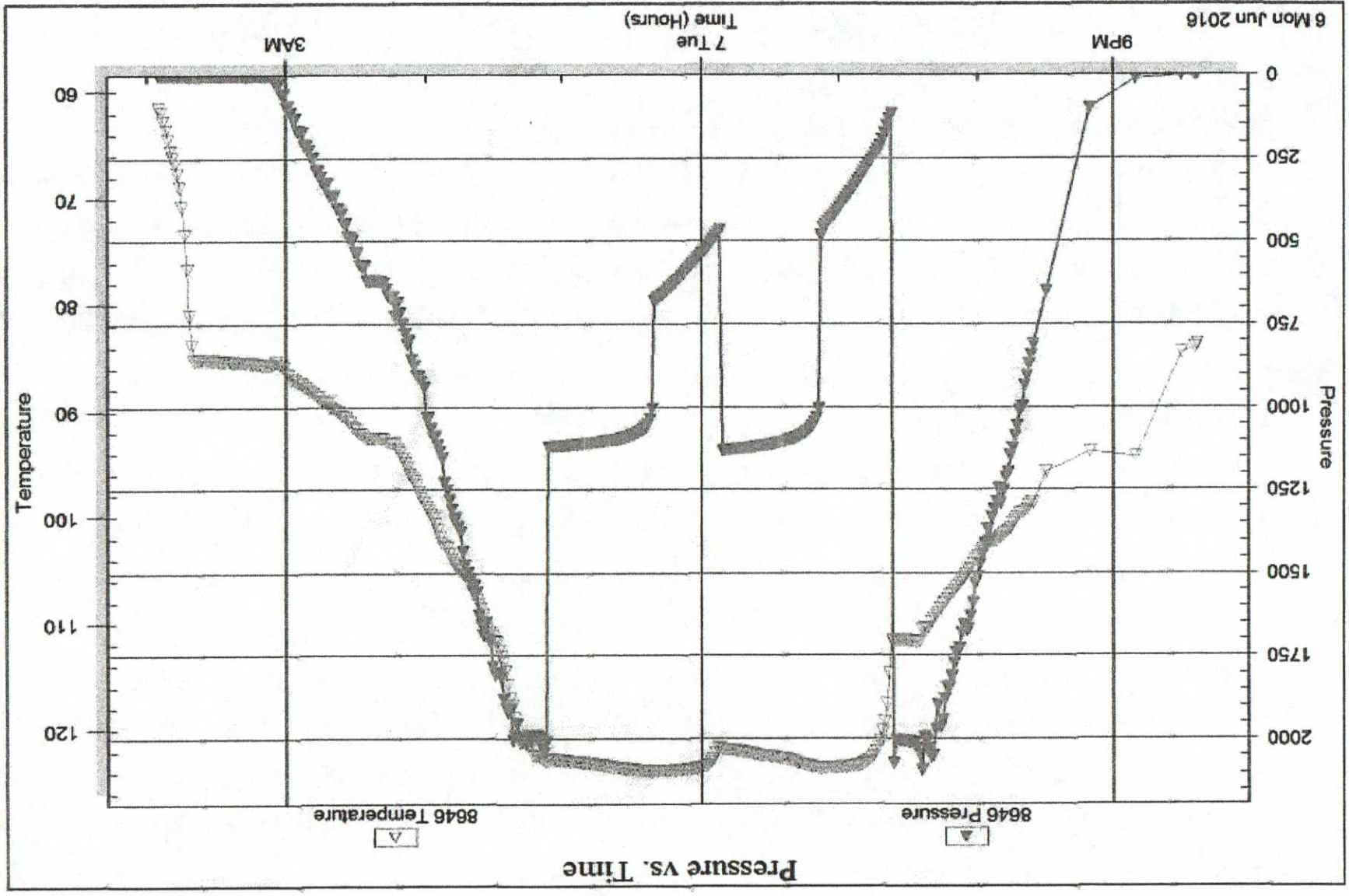
Serial #:

Laboratory Name:

Laboratory Location:

Recovery Comments: RW= 27,000 ppm







TRILOBITE
TESTING, INC.

DRILL STEM TEST REPORT

Prepared For: **King Oil Operations**

1746 150th Ave.
Ellis KS 67637

ATTN: Jason Alm

Dustbowl #1-33

33-T11s-R32w Logan Co KS

Start Date: 2016.06.07 @ 13:28:15

End Date: 2016.06.07 @ 21:27:15

Job Ticket #: 64576 DST #: 3

Trilobite Testing, Inc

PO Box 362 Hays, KS 67601

ph: 785-625-4778 fax: 785-625-5620

Printed: 2016.06.11 @ 16:17:58



TRILOBITE TESTING, INC

DRILL STEM TEST REPORT

King Oil Operations
 1746 150th Ave.
 Ellis KS 67637
 ATTN: Jason Alm

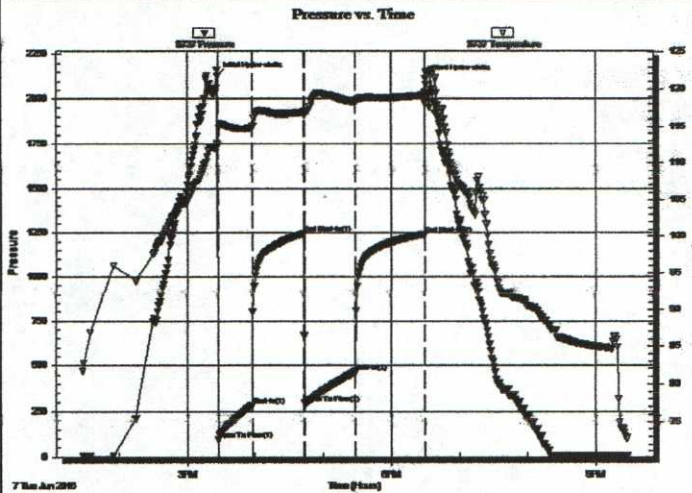
33-T11s-R32w Logan Co KS
Dustbowl #1-33
 Job Ticket: 64576 DST#: 3
 Test Start: 2016.06.07 @ 13:28:15

GENERAL INFORMATION:

Formation: **LKC I-J**
 Deviated: No Whipstock: ft (KB)
 Time Tool Opened: 15:27:15
 Time Test Ended: 21:27:15
 Interval: **4222.00 ft (KB) To 4275.00 ft (KB) (TVD)**
 Total Depth: 4275.00 ft (KB) (TVD)
 Hole Diameter: 7.88 inches Hole Condition: Fair
 Test Type: Conventional Bottom Hole (Reset)
 Tester: Mike Roberts
 Unit No: 75
 Reference Elevations: 3064.00 ft (KB)
 3056.00 ft (CF)
 KB to GR/CF: 8.00 ft

Serial #: 8737 **Outside**
 Press@RunDepth: 466.35 psig @ 4227.00 ft (KB) Capacity: 8000.00 psig
 Start Date: 2016.06.07 End Date: 2016.06.07 Last Calib.: 2016.06.07
 Start Time: 13:28:15 End Time: 21:27:15 Time On Btm: 2016.06.07 @ 15:26:45
 Time Off Btm: 2016.06.07 @ 18:29:45

TEST COMMENT: IF:BOB in 3 min.
 IS:BOB in 9 min died to 8" blow
 FF:BOB in 6 min.
 FS:Built to 1" died back to weak surface blow



PRESSURE SUMMARY

Time (Min.)	Pressure (psig)	Temp (deg F)	Annotation
0	2127.92	112.72	Initial Hydro-static
1	96.95	112.49	Open To Flow (1)
31	282.23	114.77	Shut-In(1)
77	1244.77	116.92	End Shut-In(1)
77	294.92	116.73	Open To Flow (2)
121	466.35	118.31	Shut-In(2)
183	1240.33	119.16	End Shut-In(2)
183	2113.13	121.45	Final Hydro-static

Recovery

Length (ft)	Description	Volume (tbl)
188.00	ow gcm 10%o 20%w 20%g 50%m	2.37
124.00	ocw mg 10%o 10%w 30%m 50%g	1.56
558.00	gco 40%g 60%o	7.83
310.00	gco 10%g 90%o	4.35
0.00	GIIP= 1240 ft	0.00

* Recovery from multiple tests

Gas Rates

Choke (inches)	Pressure (psig)	Gas Rate (MMcf/d)



**TRILOBITE
TESTING, INC**

DRILL STEM TEST REPORT

TOOL DIAGRAM

King Oil Operations

33-T11s-R32w Logan Co KS

1746 150th Ave.
Ellis KS 67637

Dustbowl #1-33

Job Ticket: 64576

DST#: 3

ATTN: Jason Alm

Test Start: 2016.06.07 @ 13:28:15

Tool Information

Drill Pipe:	Length: 3915.00 ft	Diameter: 3.80 inches	Volume: 54.92 bbl	Tool Weight: 1500.00 lb
Heavy Wt. Pipe:	Length: 312.00 ft	Diameter: 3.60 inches	Volume: 3.93 bbl	Weight set on Packer: 25000.00 lb
Drill Collar:	Length: 0.00 ft	Diameter: 0.00 inches	Volume: 0.00 bbl	Weight to Pull Loose: 80000.00 lb
			<u>Total Volume: 58.85 bbl</u>	Tool Chased 0.00 ft
Drill Pipe Above KB:	33.00 ft			String Weight: Initial 52000.00 lb
Depth to Top Packer:	4222.00 ft			Final 55000.00 lb
Depth to Bottom Packer:	ft			
Interval between Packers:	53.00 ft			
Tool Length:	81.00 ft			
Number of Packers:	2	Diameter: 6.75 inches		

Tool Comments:

Tool Description

Tool Description	Length (ft)	Serial No.	Position	Depth (ft)	Accum. Lengths
Change Over Sub	1.00			4195.00	
Shut In Tool	5.00			4200.00	
Hydraulic tool	5.00			4205.00	
Jars	5.00			4210.00	
Safety Joint	3.00			4213.00	
Packer	5.00			4218.00	28.00 Bottom Of Top Packer
Packer	4.00			4222.00	
Stubb	1.00			4223.00	
Perforations	4.00			4227.00	
Recorder	0.00	8646	Inside	4227.00	
Recorder	0.00	8737	Outside	4227.00	
Change Over Sub	1.00			4228.00	
Drill Pipe	32.00			4260.00	
Change Over Sub	1.00			4261.00	
Perforations	9.00			4270.00	
Bullnose	5.00			4275.00	53.00 Bottom Packers & Anchor
Total Tool Length:	81.00				



**TRILOBITE
TESTING, INC**

DRILL STEM TEST REPORT

FLUID SUMMARY

King Oil Operations

33-T11s-R32w Logan Co KS

1746 150th Ave.
Ellis KS 67637

Dustbowl #1-33

Job Ticket: 64576

DST#: 3

ATTN: Jason Alm

Test Start: 2016.06.07 @ 13:28:15

Mud and Cushion Information

Mud Type: Gel Chem

Cushion Type:

Oil API:

34 deg API

Mud Weight: 9.00 lb/gal

Cushion Length:

ft

Water Salinity:

27000 ppm

Viscosity: 53.00 sec/qt

Cushion Volume:

bbf

Water Loss: 7.95 in³

Gas Cushion Type:

Resistivity: 0.00 ohm.m

Gas Cushion Pressure:

psig

Salinity: 3000.00 ppm

Filter Cake: 1.00 inches

Recovery Information

Recovery Table

Length ft	Description	Volume bbf
188.00	ow gcm 10%o 20%w 20%g 50%m	2.367
124.00	ocw mg 10%o 10%w 30%m 50%g	1.561
558.00	gco 40%g 60%o	7.827
310.00	gco 10%g 90%o	4.348
0.00	GIP= 1240 ft	0.000

Total Length: 1180.00 ft Total Volume: 16.103 bbf

Num Fluid Samples: 0

Num Gas Bombs: 0

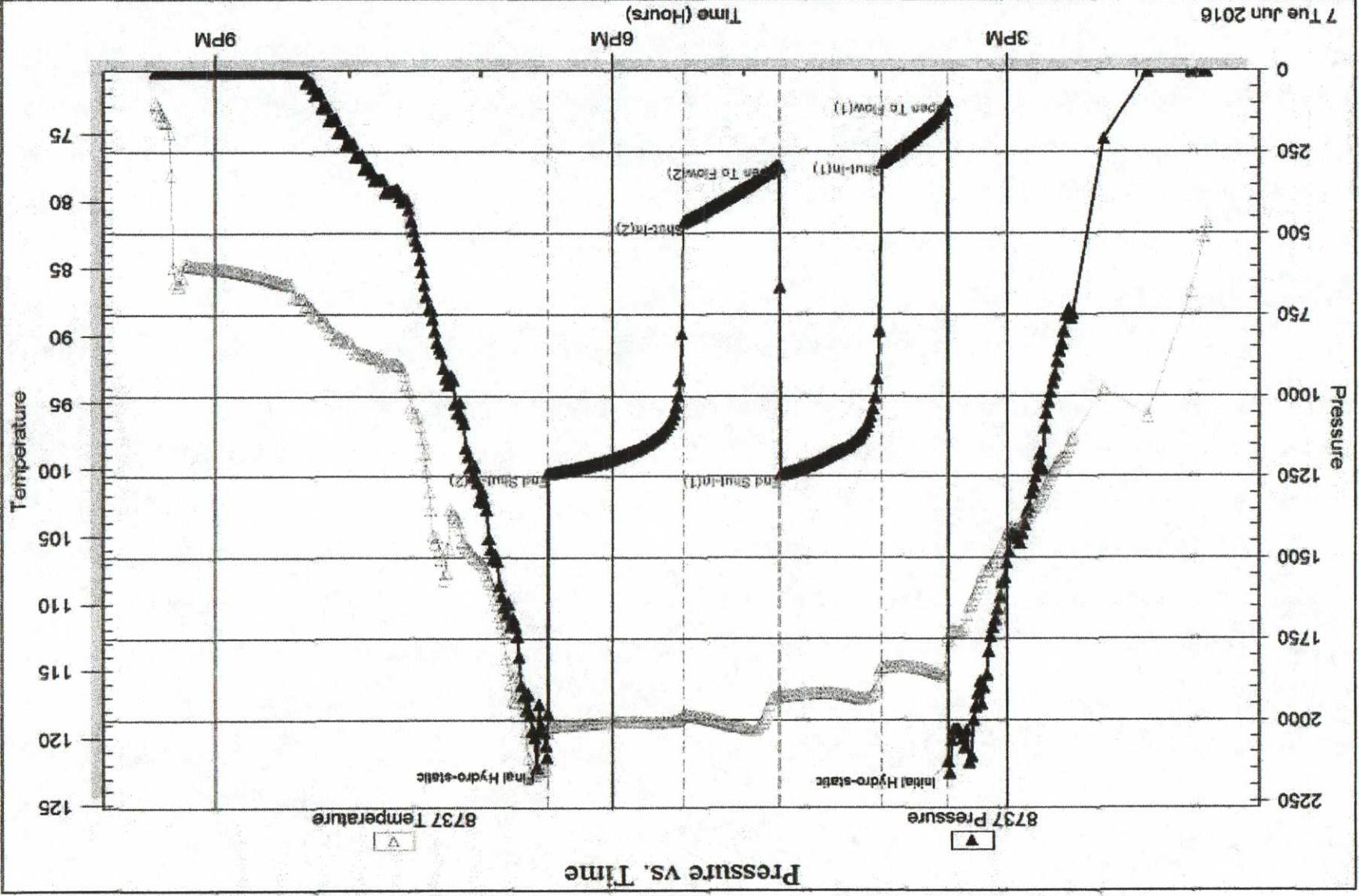
Serial #:

Laboratory Name:

Laboratory Location:

Recovery Comments: RW= .314 @ 71.3 = 27,000 ppm

API= 35 @ 70 corrected to 34 @ 60*



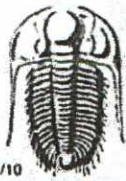
DST Test Number: 3

Dustbow #1-33

King Oil Operations

Outside

Serial #: 8737



TRILOBITE TESTING INC.

1515 Commerce Parkway • Hays, Kansas 67601

Test Ticket

NO. 64574

Well Name & No. Dustbowl #1-33 Test No. 1 Date 6-5-16
 Company King Oil Operations Elevation 3064 KB 3056 GL
 Address 1746 150th Ave Ellis KS 67637
 Co. Rep / Geo. Jason Alm Rig Disco 1
 Location: Sec. 33 Twp. T11S Rge. R32W Co. Logan State KS

Interval Tested 4074-4160 Zone Tested LKC C-F
 Anchor Length 86 Drill Pipe Run 0 Mud Wt. 8.8
 Top Packer Depth 4069 Drill Collars Run 3755 Vis 53
 Bottom Packer Depth 4074 Wt. Pipe Run 312 (3.4) WL 8.0
 Total Depth 4160 Chlorides 3000 ppm System LCM 2
 Blow Description IF: BOB in 10 Min
IS: ~~BOB in 10 Min~~ No Return Blow
FF: BOB in 10 Min
FS: No Return Blow

Rec	Feet of	%gas	%oil	%water	%mud
	<u>Free Oil 3"</u>				
Rec	<u>10</u> Feet of <u>MCOW</u>	%gas	<u>40</u> %oil	<u>40</u> %water	<u>20</u> %mud
Rec	<u>248</u> Feet of <u>WCOM</u>	%gas	<u>30</u> %oil	<u>20</u> %water	<u>50</u> %mud
Rec	<u>186</u> Feet of <u>OCMW</u>	%gas	<u>5</u> %oil	<u>85</u> %water	<u>10</u> %mud
Rec	<u>312</u> Feet of <u>MCW</u>	(wt Pipe) %gas	<u>90</u> %oil	<u>10</u> %water	<u>10</u> %mud

Rec Total 756 BHT 123 Gravity — API RW 1320 @ 72.4°F Chlorides 24,000 ppm
 (A) Initial Hydrostatic 2067 Test \$1150.00/- T-On Location 22:32
 (B) First Initial Flow 61 Jars — T-Started 01:06
 (C) First Final Flow 279 Safety Joint — T-Open 03:37
 (D) Initial Shut-In 1164 Circ Sub — T-Pulled 06:37
 (E) Second Initial Flow 284 Hourly Standby — T-Out 09:23
 (F) Second Final Flow 403 Mileage 92RT = \$92.00 Comments —
 (G) Final Shut-In 1153 Sampler 69
 (H) Final Hydrostatic 1973 Straddle — Ruined Shale Packer —
 Shale Packer — Ruined Packer —
 Extra Packer — Extra Copies —
 Extra Recorder — Sub Total 0
 Day Standby — Total 1219
 Accessibility 1219 MP/DST Disc't —
 Sub Total \$1242.00/-

Initial Open 45
 Initial Shut-In 45
 Final Flow 45
 Final Shut-In 45
 Approved By _____ Our Representative Mike Roberts

Trilobite Testing Inc. shall not be liable for damaged or any kind of the property or personnel of the one for whom a test is made, or for any loss suffered or sustained, directly or indirectly, through the use of equipment, or its statements or opinion concerning the results of any test, tools lost or damaged in the hole shall be paid for at cost by the party for whom the test is made.



TRILOBITE TESTING INC.

1515 Commerce Parkway - Hays, Kansas 67601

Test Ticket

NO. 64575

Well Name & No. Dustbowl #1-33 Test No. 2 Date 6-6-16
 Company King Oil Operations Elevation 3064 KB 3056 GL
 Address 1746 150th Ave Ellis KS 67637
 Co. Rep / Geo. Jason Alm Rig DISCO1
 Location: Sec. 33 Twp. T11S Rge. R22W Co. Logan State KS

Interval Tested 4182-4225 Zone Tested LKC "H"
 Anchor Length 43 Drill Pipe Run 3884 Mud Wt. 9.0
 Top Packer Depth 4177 Drill Collars Run 0 Vis 54
 Bottom Packer Depth 4182 Wt. Pipe Run 312 WL 8.0
 Total Depth 4225 Chlorides 4000 ppm System LCM 2

Blow Description IF: BOB in 2 Min
IS: No Return Blow
FF: BOB in 4 Min.
FS: No Return Blow

Rec	Feet of	%gas	%oil	%water	%mud
<u>288</u>	<u>mcw</u>		<u>50</u>	<u>50</u>	
<u>1118</u>	<u>mcsu</u>		<u>95</u>	<u>5</u>	

Rec Total BHT 125 Gravity API RW .301 @ 62.8°F Chlorides 27000 ppm

(A) Initial Hydrostatic 2075 Test #1150.09 T-On Location 19:00
 (B) First Initial Flow 97 Jars T-Started 20:23
 (C) First Final Flow 465 Safety Joint T-Open 22:37
 (D) Initial Shut-In 1132 Circ Sub NC T-Pulled 01:07
 (E) Second Initial Flow 463 Hourly Standby T-Out 03:55
 (F) Second Final Flow 680 Mileage 92RT = #92.09 Comments _____
 (G) Final Shut-In 1120 Sampler 69 _____
 (H) Final Hydrostatic 2039 Straddle _____
 Shale Packer _____
 Extra Packer _____
 Extra Recorder _____
 Day Standby _____
 Accessibility _____

Initial Open 30
 Initial Shut-In 45
 Final Flow 30
 Final Shut-In 45
 Sub Total 0
 Total 1219
 MP/DST Disc't _____

Approved By _____ Our Representative Mike Roberts

TriLOBITE Testing Inc. shall not be liable for damaged of any kind of the property or personnel of the one for whom a test is made, or for any loss suffered or sustained, directly or indirectly, through the use of its equipment, or its statements or opinion concerning the results of any test, tools lost or damaged in the hole shall be paid for at cost by the party for whom the test is made.



TRILOBITE TESTING INC.

1515 Commerce Parkway • Hays, Kansas 67601

Test Ticket

NO. 64576

Well Name & No. Dustbowl #1-33 Test No. 3 Date 6-7-16
 Company King Oil Operations Elevation 3064 KB 3056 GL
 Address 1746 150th Ave Ellis KS 67637
 Co. Rep / Geo. Jason Alm Rig Disco 1
 Location: Sec. 33 Twp. T11S Rge. R22W Co. Logan State KS

Interval Tested 4222-4275 Zone Tested LKC "I-5"
 Anchor Length 53 Drill Pipe Run 3915 Mud Wt. 9.2
 Top Packer Depth 4217 Drill Collars Run 0 Vis 51
 Bottom Packer Depth 4222 Wt. Pipe Run 312 WL 6.8
 Total Depth 4275 Chlorides 5000 ppm System LCM 2

Blow Description IF: BOB in 3 Min.
IS: BOB in 9 Min Died to 8"
FF: BOB in 6 Min.
FS: Built to 1" Died to Weak Surface Blow

Rec	Feet of	%gas	%oil	%water	%mud
<u>0</u>	<u>GIP = 1240'</u>	<u>100</u>			
<u>310</u>	<u>900</u>	<u>10</u>	<u>90</u>		
<u>558</u>	<u>900</u>	<u>40</u>	<u>60</u>		
<u>124</u>	<u>OCWmg</u>	<u>Hw 50</u>	<u>10</u>	<u>10</u>	<u>30</u>
<u>188</u>	<u>OWGCM</u>	<u>Hw 20</u>	<u>10</u>	<u>20</u>	<u>50</u>

Rec Total _____ BHT 119 Gravity 34 API RW 314 @ 71.3° F Chlorides 27000 ppm

(A) Initial Hydrostatic 2127 Test #1150.00 T-On Location 12:15
 (B) First Initial Flow 96 Jars _____ T-Started 13:28
 (C) First Final Flow 282 Safety Joint _____ T-Open 15:37
 (D) Initial Shut-In 1244 Circ Sub NL T-Pulled 18:27
 (E) Second Initial Flow 294 Hourly Standby _____ T-Out 21:27
 (F) Second Final Flow 466 Mileage 92RT = #92.00 Comments Loaded Too
 (G) Final Shut-In 1240 Sampler 69+69 at 12:30 P.M
 (H) Final Hydrostatic 2133 Straddle _____ on 6-8-16
 Ruined Shale Packer _____
 Ruined Packer _____

Initial Open 30 Extra Packer _____ Extra Copies _____
 Initial Shut-In 45 Extra Recorder _____ Sub Total 800
 Final Flow 45 Day Standby 1.5d 3h Total 1288+800
 Final Shut-In 60 Accessibility _____ MP/DST Disc't _____
 Sub Total 1288

Approved By _____ Our Representative Mike Roberts
 Trilobite Testing Inc. shall not be liable for damaged of any kind of the property or personnel of the one for whom a test is made, or for any loss suffered or sustained, directly or indirectly, through the use of its equipment, or its statements or opinion concerning the results of any test, tools lost or damaged in the hole shall be paid for at cost by the party for whom the test is made.