

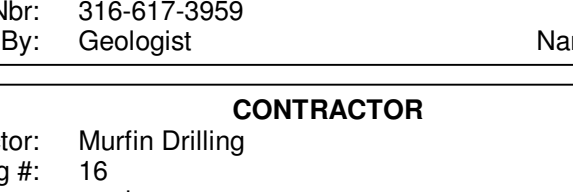
OPERATOR  
Dixon Operating Company, LLC  
Address: 8100 E. 22nd St. N, Bld 300, Ste 200  
Wichita, KS 67226

Contact Geologist: VE #1-34  
Contact Phone Nbr: Location 34-23S-12W API: 15-185-23959  
Well Name: Pool: State: Kansas Field: Wildcat  
Country: USA

Scale 1:240 Imperial  
Well Name: VE #1-34  
Surface Location: Section 34-23S-12W  
Bottom Location: API: 15-185-23959  
License Number: Spud Date: 5/20/2016 Time: 12:30 PM  
Region: Stafford County  
Drilling Completed: 6/4/2016 Time: 10:00 PM  
Surface Coordinates: 620' FNL & 1800' FWL  
Bottom Hole Coordinates:  
Ground Elevation: 1862.00ft  
K.B. Elevation: 1867.00ft  
Logged Interval: 2800.00ft To: 3950.00ft  
Total Depth: 3950.00ft  
Formation:  
Drilling Fluid Type: Chemical (MudCo)

SURFACE CO-ORDINATES

Well Type: Vertical  
Longitude: 620' FNL  
N/S Co-ord: 1800' FWL  
E/W Co-ord:



Company: TerraTech Energy Service LLC.  
Address: 1632 S. West St. Suite 12  
Wichita, KS 67208  
Phone Nbr: 316-617-3959  
Logged By: Geologist Name: Bruce Reed

CONTRACTOR

Contractor: Murfin Drilling  
Rig #: 16  
Rig Type: mud rotary  
Spud Date: 5/20/2016 Time: 12:30 PM  
TD Date: 6/4/2016 Time: 10:00 PM  
Rig Release: 6/5/2016 Time: 7:00 PM

ELEVATIONS

K.B. Elevation: 1867.00ft Ground Elevation: 1862.00ft  
K.B. to Ground: 5.00ft

NOTES

Surface Casing: 8-5/8" at 254'  
Production Casing: None  
Daily Penetration: 05/20/16 SPUD @ 12:30 PM  
05/21/16 262'  
05/31/16 1620'  
06/01/16 2705'  
06/02/16 3535'  
06/03/16 3785'  
06/04/16 3859' RTD @ 10:00 PM  
06/05/16 3950' RIG released @ 7:00 PM

DRILL STEM TESTS

DST #1 3729' to 3785' Viola. Weak, one (1") inch blow throughout the initial flow period. Weak, one-half (1/2") inch blow throughout the second flow period. Recovered: 40' OSM IFP: 30" 35-48 psi, ISIP: 30" 181 psi, FFP: 30" 49-54 psi, FSIP: 30" 91 psi  
DST #2 3785' to 3855' Arbuckle. Fair blow that built to eleven (11") inches during the initial flow period. Weak blow that built to seven (7") inches during the second flow period. Recovered: 20' GIP, 40' Clean Oil and 180' OCM (30% oil, 70% mud). IFP: 30" 46-77 psi, ISIP: 60" 1353 psi, FFP: 60" 83-127 psi, FSIP: 90" 1349 psi  
DST #3 3855' to 3859' Arbuckle. Fair blow that built to seven (7") inches during the second flow period. Fair blow that built to seven and one half (7-1/2") inches during the second flow period. Recovered: 50' Clean Oil and 120' SOCMW (5% oil, 90% water, 5% mud). IFP: 30" 23-52 psi, ISIP: 60" 1353 psi, FFP: 60" 53-90 psi, FSIP: 90" 1340 psi

FORMATION TOPS

Formation	Sample Top	Datum	Log Top	Datum	Comparison*
Heebner	3241'	-1374	3244'	-1377	+1
Toronto	3256'	-1389	3260'	-1393	NA
Douglas	3274'	-1407	3275'	-1408	NA
Brown Lime	3390'	-1523	3388'	-1421	NA
Lansing	3418'	-1551	3414'	-1547	+1
Base KC	3684'	-1817	3678'	-1811	+7
Viola	3732'	-1865	3730'	-1863	+19
Simpson	3785'	-1918	3784'	-1917	NA
Arbuckle	3852'	-1985	3848'	-1981	+16
Total Depth	3950'	-2083	3946'	-2079	NA

\*Petroleum Management, #1 Heyen, SE NW NW Section 34-23S-12W, Stafford Co., Kansas

ROCK TYPES

Legend for Rock Types: Cht (Chert), Dolprim (Dolomite), Lmst fw7-shale, gry (Limestone fine to shaly, gray), Carbon Sh (Carbonaceous shale), Ss (Sandstone)

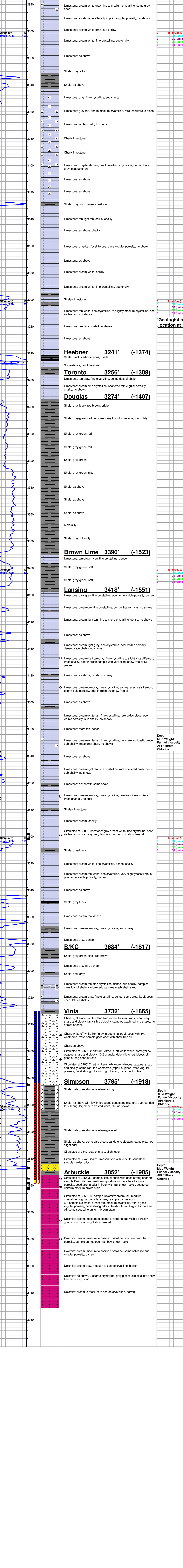
ACCESSORIES

MINERAL: Sand, Chert, White, Argillaceous/Shale  
OTHER SYMBOLS: Oil Show (Good, Fair, Poor, Spotted, Questionable, Dead, Fluorescence), DST Int, DST alt, Core, oil pipe

INTERVALS

Legend for Intervals: Core, DST, Oil Show symbols

Printed by GEOstrip VC Striplog version 4.0.7.0 (www.grsi.ca)



Depth	Total Gas (units)	C1 (units)	C2 (units)	C3 (units)	C4 (units)
1240 Imperial	100	100	100	100	100
2820	100	100	100	100	100
2883' (-1016)	100	100	100	100	100
2921' (-1054)	100	100	100	100	100
3241' (-1374)	100	100	100	100	100
3256' (-1389)	100	100	100	100	100
3274' (-1407)	100	100	100	100	100
3390'	100	100	100	100	100
3418' (-1551)	100	100	100	100	100
3684'	100	100	100	100	100
3732' (-1865)	100	100	100	100	100
3785' (-1918)	100	100	100	100	100
3852' (-1985)	100	100	100	100	100
3950'	100	100	100	100	100

Property	Value
Depth	3537
Mud Weight	9.4
Funnel Viscosity	52
API Filtrate	16.2
API Filtrate Chloride	10.4
Chloride	5,000

Property	Value
Depth	3785'
Mud Weight	9.4
Funnel Viscosity	72
API Filtrate	16.2
API Filtrate Chloride	9.8
Chloride	100

Property	Value
Depth	3859'
Mud Weight	9.2
Funnel Viscosity	54
API Filtrate	16.2
API Filtrate Chloride	12,000
Chloride	100