

**KIM B. SHOEMAKER**  
 CONSULTING GEOLOGIST  
 316-584-9709 • WICHITA, KS

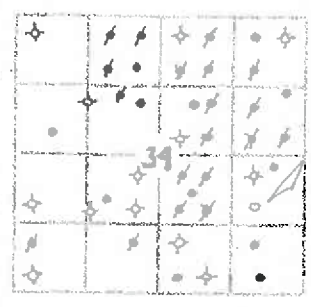
**GEOLOGIST'S REPORT**  
 DRILLING TIME AND SAMPLE LOG

COMPANY L. D. DRILLING, INC.  
 LEASE # 3-34 JENISCH  
 FIELD BEAVER SOUTH  
 LOCATION 1650' FSL & 990' FEL  
 SEC 34 TWP 16s RGE 12w  
 COUNTY BARTON STATE KANSAS  
 CONTRACTOR L. D. DRILLING, INC.  
 SPUD 8-16-16 COMP 8-24-16  
 RTD 3480 LTD 3476  
 MUD UP 2564 TYPE MUD CHEMICAL

ELEVATIONS  
 KB 1908  
 DF  
 CL 1903  
 Measurements Are All From 1908 KB  
 CASING  
 SURFACE 8 5/8" @ 414'  
 PRODUCTION 5 1/2" @  
 ELECTRICAL SURVEYS  
 DUAL IND, DENS.-H., MICRO

SAMPLES SAVED FROM 2700 TO 3480  
 DRILLING TIME KEPT FROM 2600 TO 3480  
 SAMPLES EXAMINED FROM 2700 TO 3480  
 GEOLOGICAL SUPERVISION FROM 2900 TO 3480  
 GEOLOGIST ON WELL KIM B. SHOEMAKER

FORMATION TOPS	LOG	SAMPLES
ANHYDRITE	786+1122	795± 1113
TOPEKA	2702-794	2706-798
HEEBNER	2984-1076	2989-1081
BROWN LIME	3077-1169	3081-1173
LANSING	3096-1188	3098-1190
B/KC	3335-1427	3335-1427
ARBUCKLE	3352-1444	3354-1446



REMARKS

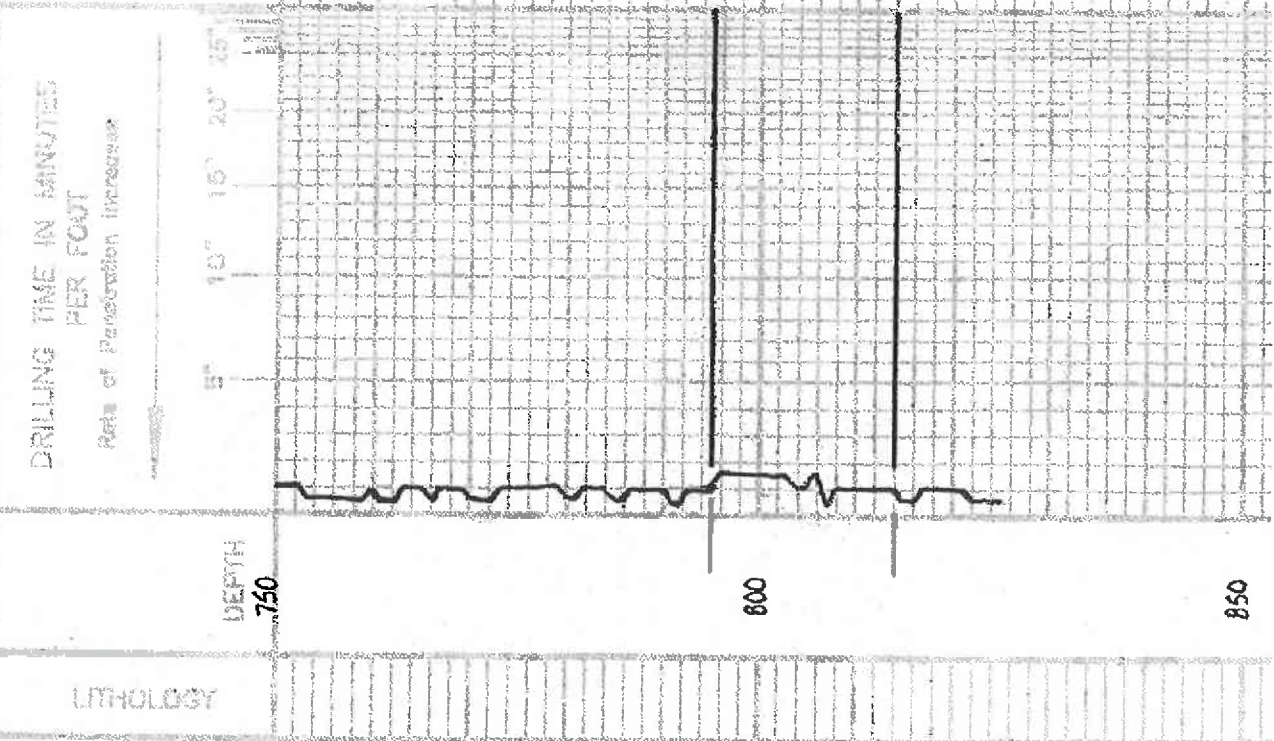
8-16-16 SPUD  
 8-17 @ 415'  
 8-18 @ 1760'  
 8-19 @ 2564'  
 8-20 @ 3000'  
 8-21 @ 3305'  
 8-22 @ 3361'  
 8-23 @ 3382'  
 8-24 @ 3480'

API: 15-009-26147

Stuck @ 2561 spotted oil.

LEGEND

- Anhydrite
- Sgk
- Sandstone
- Shale
- Dark sh
- Limstuffs
- Col. L. sh
- Gyps
- Dolomite



LITHOLOGY

REMARKS

ANHYDRITE 795±1113

8/ANH 814±1094

850

2600

2700

2800

VS: 58  
WT: 8.6  
WL: 9.2

Oil 5000



Samples are Logged

56.4-114 Silty

TOPEKA 2706-798

55.4-51 Foss

55.4- VS/BSS

55. VS/BSS

56.4

55.7- VS/BSS Silty

55.7- Fossil Colitic

55.7- VS/BSS Silty

55.7- Foss Colitic

56.4- VS/BSS

56.4

56.4- Silty

55.7- VS/BSS Colitic

2900

3000

3100

3200

Sh. G.  
 ss. G. sh. P. ss.  
 sh. dk. alb.  
 ss. T. wh. Foss.  
 sh. G.  
 ss. wh. sh. P. ss. Calh.  
 ss. T. wh. sh. P. ss.  
 ss. T. wh. B. sh. P. ss. cl. H.

**HEEDNER 2989-1081**  
 sh. P. ss. cl. H.

TORONTO

DOUGLAS  
 N15:56  
 W7:89  
 MSL:88  
 C:11-2309

sh. G.  
 ss. wh. sh. P. ss. cl. H.

sh. G.  
 ss. B. wh. G. silty.  
 sh. B. wh. G. silty.

sh. G. B. wh. G. silty.

ss. cl. B. wh. G. silty.

**BROWNLINE 3081-1175**

ss. B. wh. G. silty.

**LANSING 3088-1190**

sh. G.  
 ss. wh. sh. P. ss. cl. H. Foss.  
 sh. G. B. wh. G. silty. Foss. Foss.

sh. G.  
 ss. wh. sh. P. ss. cl. H. Foss.  
 ss. wh. sh. P. ss. cl. H. Foss.

ss. G. Foss.

ss. wh. Calh.

ss. T. wh. G. silty. Foss. Foss.

ss. T. wh. G. silty. Foss. Foss.

2900

3000

3100

3200

Sh. G.

ls. G. sh. Pass.

sh. dk. alb.

ls. T. wh. Foss.

Sh. G.

ls. wh. sh. Foss. Cally.

ls. T. wh. sh. Foss.

ls. T. wh. sh. Foss. Cally.

ls. T. wh. sh. Foss. Cally.

HEERNE 2989-1081

sh. G. alb.

ls. wh. sh. Foss. Cally.

sh. G.

ls. wh. sh. Foss. Cally.

sh. G.

ls. wh. sh. Foss. Cally.

sh. G.

ls. wh. sh. Foss. Cally.

sh. G.

ls. wh. sh. Foss. Cally.

BROWNLINE 3081-1173

ls. wh. sh. Foss. Cally.

sh. G.

LANSING 3098-1190

ls. wh. sh. Foss. Cally.

sh. G.

ls. wh. sh. Foss. Cally.

sh. G.

ls. wh. sh. Foss. Cally.

sh. G.

ls. wh. sh. Foss. Cally.

sh. G.

ls. wh. sh. Foss. Cally.

ls. G. Foss.

sh. G.

ls. wh. sh. Foss. Cally.

ls. T. wh. sh. Foss. Cally.

ls. T. wh. sh. Foss. Cally.

TORONTO

DOUGLAS

N 15-56

N 15-89

N 15-88

City 6300

