



BlueRidge Petroleum Corporation



P.O. Box 30545
Edmond, OK 73003
(580) 242-3732

Scale 1:240 Imperial

Well Name: PFEIFFER #1-26
 Surface Location: NE NE SW NW Section 26 - 17S - 20W
 Bottom Location:
 API: 15-165-22135-00-00
 License Number: 31930
 Spud Date: 9/20/2016 Time: 1:15 PM
 Region: RUSH COUNTY
 Drilling Completed: 9/26/2016 Time: 6:04 PM
 Surface Coordinates: 1616' FNL & 1303' FWL
 Bottom Hole Coordinates:
 Ground Elevation: 2112.00ft
 K.B. Elevation: 2120.00ft
 Logged Interval: 3100.00ft To: 4080.00ft
 Total Depth: 4040.00ft
 Formation: LANSING - KANSAS CITY; CHEROKEE SAND
 Drilling Fluid Type: FRESH WATER / CHEMICAL GEL

OPERATOR

Company: BLUE RIDGE PETROLEUM CORPORATION
Address: P.O. BOX 30545
EDMOND, OK 73003

Contact Geologist: JON ALLEN
 Contact Phone Nbr: (580) 242-3732
 Well Name: PFEIFFER #1-26
 Location: NE NE SW NW Section 26 - 17S - 20W
 API: 15-165-22135-00-00
 Pool: Field: WILDCAT
 State: KANSAS Country: USA

SURFACE CO-ORDINATES

Well Type: Vertical
Longitude: -99.5074654
Latitude: 38.5485168
N/S Co-ord: 1616' FNL
E/W Co-ord: 1303' FWL

LOGGED BY



Company: BIG CREEK CONSULTING, INC.
Address: 1909 MAPLE
ELLIS, KS 67637

Phone Nbr: (785) 259-3737
Logged By: GEOLOGIST Name: JEFF LAWLER

Recovered	245 ft. of	VSOSGWM 40% WTR, 60% MUD W/ A VERY THIN SCUM OF OIL, & SOME GASSY BUBBLES	
Recovered	200 ft. of	VSOSGMW 94% WTR, 6% MUD W/ A VERY THIN SCUM OF OIL, & SOME GASSY BUBBLES	
Recovered	445 ft. of	TOTAL FLUID	
Recovered	ft. of		
Recovered	ft. of	CHLOR: 22,000 PPM	Price Job
Recovered	ft. of	RW: .41 @ 62 DEG	Other Charges
Remarks:		PH: 70	Insurance
TOOL SAMPLE: 99% WTR, 1% MUD W/ A VERY THIN SCUM OF OIL, GASSY ODOR			Total

Time Set Packer(s)	4:45 A.M.	A.M. P.M.	Time Started Off Bottom	7:30 A.M.	A.M. P.M.	Maximum Temperature	118°F
Initial Hydrostatic Pressure			(A)			1960 P.S.I.	
Initial Flow Period	Minutes	30	(B)	17 P.S.I. to (C)			117 P.S.I.
Initial Closed In Period	Minutes	45	(D)			599 P.S.I.	
Final Flow Period	Minutes	30	(E)	124 P.S.I. to (F)			211 P.S.I.
Final Closed In Period	Minutes	60	(G)			599 P.S.I.	
Final Hydrostatic Pressure			(H)			1961 P.S.I.	

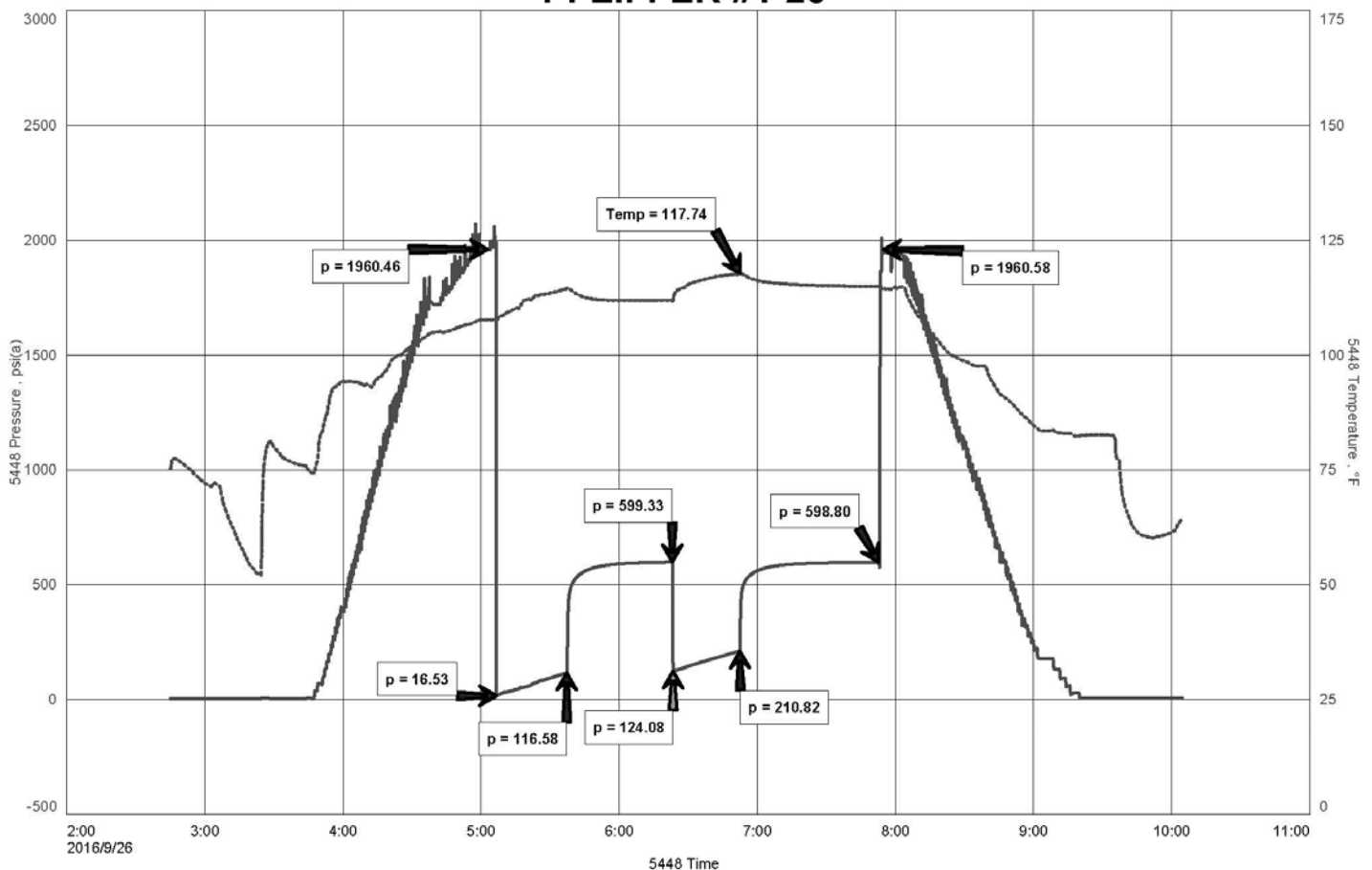
Diamond Testing shall not be liable for damages of any kind to the property or personnel of the one for whom a test is made or for any loss suffered or sustained, directly or indirectly, through the use of its equipment, or its statement or opinion concerning the result of any test. Tools lost or damaged in the hole shall be paid for at cost by the party for whom the test is made.

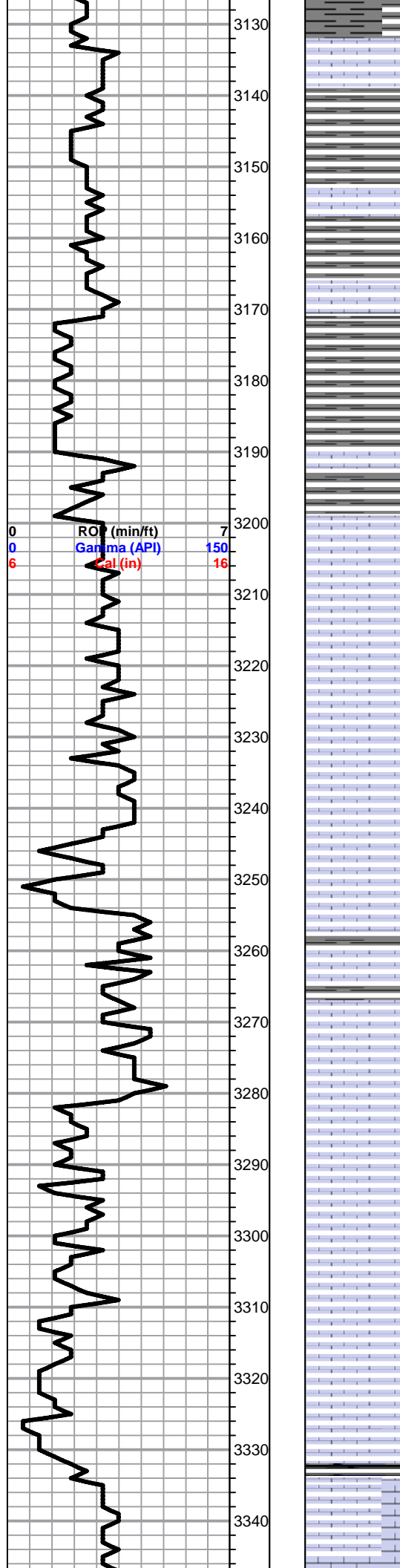
DST #1 CHARTS

BLUE RIDGE PETROLEUM CORP.
DST#1 3950-3990 CHEROKEE SAND
Start Test Date: 2016/09/26
Final Test Date: 2016/09/26

PFEIFFER #1-26
Formation: DST#1 3950-3990 CHEROKEE SAND
Pool: WILDCAT
Job Number: M834

PFEIFFER #1-26





Sh- Gray, soft & gummy

Lm- Cream Buff Tan, FXLN, fsl w/ crinoids, well cemented w/ sctrd XLN porosity, tight

Lm- Cream Tan, FXLN, fsl, well cemented, sctrd XLN & secondary reXLN porosity

Sh- Gray Maroon Green, soft & silty, gritty & earthy, some sl sandy

Sh- Gray, silty & soft, chalky, gummy & argillaceous, dense & waxy

TOPEKA 3200' (-1080) E-LOG 3200' (-1080) Lm- Tan, VF-FXLN, dense, well cemented, fsl w/ few fsl fragments, poorly dev. w/ sctrd micro XLN porosity

Lm- Cream Off White, VF-FXLN, dense, well cemented, tight w/ poory vis. porosity, several chalky pcs

Lm- Cream Off White, FXLN, fsl, well cemented, sctrd XLN porosity, clean & barren

Lm- A/A

Lm- Buff Gray, VFXLN, dense, well cemented, tight w/ min. vis. porosity

Lm- Cream Off White Buff, VF-FXLN, dense, well cemented, sl fsl, poorly dev. w/ sctrd micro XLN porosity, barren

Lm- Off White Cream, VFXLN, dense, tight, well cemented, several clumps of white chalk

Lm- Cream Gray, FXLN, fsl, poorly dev. & mostly tight, vry clean & barren, several pcs of gray sl cherty Ls w/ fusulinids, no vis. porosity

Lm- Cream, FXLN, densely packed fsl & fsl fragments, loosely cemented & crumbly, dense XLN porosity

Lm- White, Vf Grn, gummy white chalk

Lm- Cream, FXLN, loosely cemented & crumbly, fsl, dense XLN porosity, barren

Lm- Gray White, CryptoXLN & Vf Grn, mix of fusulinid packed vitreous cherty Ls & gummy white chalk

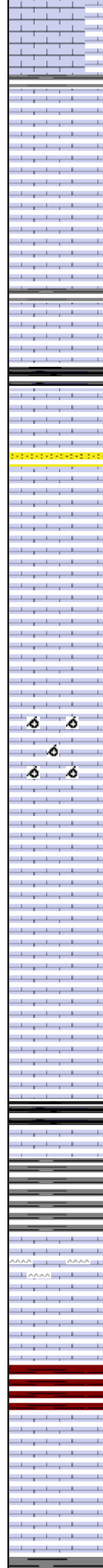
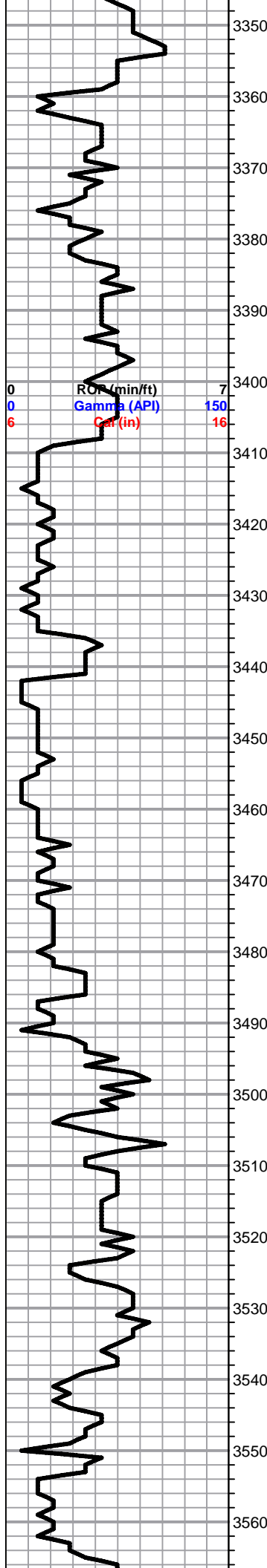
Lm- Cream Off White, FXLN, dense, loosely cemented, massive, fsl w/ fsl fragments, high-energy mix, poor vis. porosity, sl chalky in part

Sh- Black Gray Maroon, fissile & carbonaceous, silty & calcareous

0
0
6

ROF (min/ft)
Gamma (API)
Cal (in)

7
150
16



Lm- Cream Tan, VFXLN, dense, well cemented, tight w/ min. vis. porosity, few w/ sctrd reXLN veins

Sh- Gray Maroon Green, semi-waxy, gritty & earthy

Lm- Cream, FXLN, dense, massive, mod. well dev. w/ sctrd fn ppt porosity & some sctrd reXLN porosity, barren

Lm- Cream Off White, FXLN, dense XLN porosity, some secondary reXLN porosity, fsl w/ fusulinids, mottled, barren

Lm- Buff, FXLN, loosely cemented, dense XLN porosity, fsl & bioclastic, sl trashy

Lm- Tan, FXLN, dense XLN porosity, semi-graunular, mod. dev. barren

Sh- Black Gray, fissile & carbonaceous, soft & silty

Lm Snd- Cream, FXLN, massive dolomitic Ls, oolitic, mod. dev. w/ sctrd fn ppt & XLN porosity, loosely cemented, consolidated & well sorted sub rounded frosted Ss, barren

Lm- Cream, VF-FXLN, A/A less developed w/ sctrd XLN porosity, soft white chalk

Lm- Gray Milky White Tan, VFXLN, dense, fsl cherty Ls w/ no vis. porosity

Lm- White, abundant soft white chalk

Lm- Off White, FXLN, oomoldic w/ sctrd vuggy porosity, barren

Lm- Cream, F-MEDXLN, fsl w/ fusulinids, massive, gritty sl dolomitic Ls, well cemented, dense consistent porosity, barren

Lm- Cream Tan, VFXLN, dense, well cemented, mostly tight w/ poor vis. porosity, some sctrd mottling, soft white chalk

HEEBNER 3503' (-1383) E-LOG 3501' (-1381) Sh- Black, fissile & carbonaceous

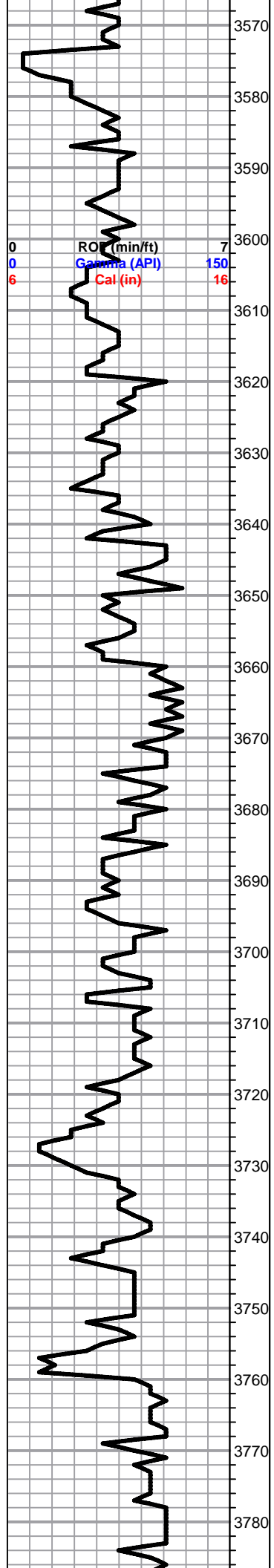
TORONTO 3519' (-1399) E-LOG 3519' (-1399) Lm- Cream White, FXLN, sl fsl, poorly dev. & mostly tight w/ much soft white chalk, vry clean & barren, several pcs of vitreous fresh bedded chert

Lm- Buff, VFXLN, dense, well cemented, tight w/ min. vis. porosity

Sh- Gray Maroon Green, argillaceous clumps, gritty & earthy

LKC 3544' (-1424) E-LOG 3545' (-1425) Lm- Cream Off White, FXLN, fsl, poorly dev. w/ sctrd XLN porosity, some soft white chalk

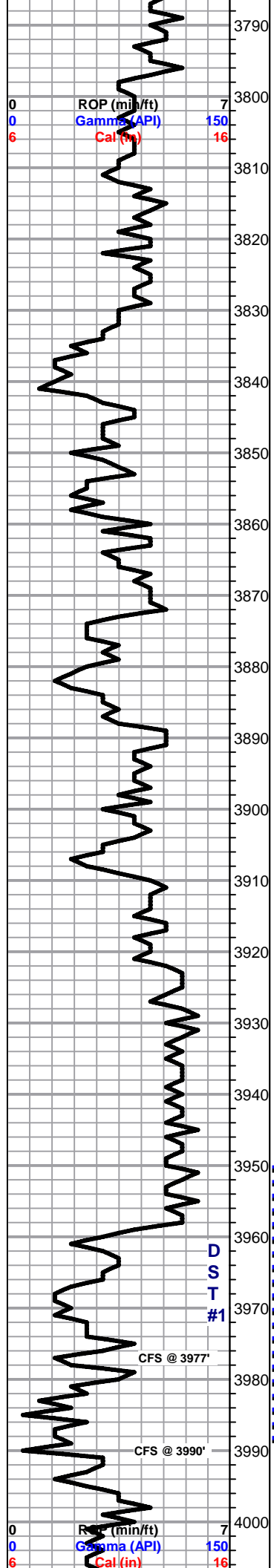
Lm- Buff White, VF-FXLN, dense, well cemented sl dolomitic Ls w/ sctrd XLN porosity, much soft white chalk



ROP (min/ft) 7
 Gamma (API) 150
 Cal (in) 16
 0 6



- 3575 Lm- Tan Buff, FXLN, oomoldic w/ sctrd vuggy & XLN porosity, barren, few pcs of vitreous white oolitic chert
- 3580 Lm- Cream Off White, FXLN, dense gritty well cemented dolomitic Ls w/ microXLN porosity, soft white chalk, barren
- 3590 Lm- Cream Buff, VF-FXLN, dense, well cemented, poorly dev. w/ microXLN-XLN porosity, barren
- 3600 Lm- Gray, VFXLN, dense, well cemented, tight w/ min. vis. porosity
- 3620 Lm- Cream Off White, FXLN, dense, well cemented, mostly tight w/ sctrd XLN porosity, some soft white chalk
- 3630 Lm- Tan, VFXLN, dense, well cemented, tight, sctrd XLN & reXLN porosity, barren
- 3635 Lm- Cream off White, FXLN, fsl, poorly dev. w/ sctrd XLN porosity, some soft white chalk
- 3640 Lm- Cream Off White, VF-FXLN, dense, well cemented, tight w/ poor vis porosity, some soft white chalk
- 3650 Lm- Off White, Fn Grn, loosely cemented chalky mud supported matrix, poor vis. porosity
- 3660 Lm- Cream Off White, VF-FXLN, dense, tight, well cemented, poor vis. porosity
- 3670 Lm- Cream, VFXLN, tight & well cemented cherty Ls w/ sctrd microXLN porosity, several pcs of milky white & gray vitreous fresh bedded chert
- 3680 Lm- Tan, VF-FXLN, dense, well cemented, tight bioclastic w/ fusulinid & crinoid fragments, sctrd to dense XLN porosity
- 3690 Sh- Black Gray, fissile & carbonaceous, girty & earthy
- 3700 Lm- Cream Off White, VF-FXLN, dense, well cemented, mostly tight & poorly developed w/ sctrd XLN porosity, vry clean & barren
- 3710 Lm- Cream Buff, VFXLN, dense, well cemented, tight w/ min. vis. porosity, some soft white chalk
- 3720 Sh- Gray Maroon, silty & soft, gritty & earthy
- 3730 Lm- Cream, FXLN, oolitic, few sctrd dissolved oolites, sctrd fn ppt & XLN porosity, barren
- 3740 Sh- Gray Maroon, waxy, gritty & earthy
- 3750 Lm- Cream Off White, FXLN, dense, well cemented, barren, some soft white chalk
- 3760 Lm- Cream Off White, FXLN, dense, well cemented, poorly dev. w/ min. vis. porosity
- 3770 Sh- Dove Gray Maroon, soft & calcareous, argillaceous wash
- 3780 Lm- Tan, VFXLN, tight, dense, well cemented, poor vis. porosity



Sh- Gray Maroon, gritty & earthy, semi-waxy

Lm- Tan Milky Gray, VFXLN, dense well cemented cherty Ls w/o vis. porosity

Lm- Tan, FXLN, dense, vry well cemented, tight, sctrd reXLN porosity

BKC 3822' (-1702) E-LOG 3817' (-1697) Sh- Gray Maroon, semi waxy & sl arenaceous, gritty & earthy

Lm- Cream Tan, VF-FXLN, dense, well cemented & mostly tight w/ min. vis. - sctrd micro XLN porosity

Sh- Gray Maroon Mint Green, gritty & earthy, pebbly, waxy

Lm- Brown Tan Cream, trashy mix, some sl fsl, some detrital mix, massive, all w/ poor vis. porosity

Sh/Chert- Gray Maroon, gritty & earthy, sl arenaceous Salmon/White, detrital gritty chert

A/A w/ increase in Salmon vitreous chert & salmon/white dolotmitic chert

Sh- Varying shades of Gray & Purple, mostly sl waxy, some sl arenaceous

ALTAMONT 3889' (-1769) E-LOG 3889' (-1769) Lm- Buff, VFXLN, dense, gritty, well cemented & tight w/ no vis. porosity

Lm- Cream Off White, VFXLN, dense, well cemented, dolomitic chert

Sh- Gray Maroon, semi waxy, gritty & earthy

PAWNEE 3910' (-1790) E-LOG 3910' (-1790) Lm- Cream Off White, FXLN, loosely cemented dolomitic Ls, semi granular

Lm- Gray Cream, Vf-Fn Grn, loosely to well cemented, mostly tight, intergranular porosity, clean & barren

Lm- Gray, Vf- Fn Grn, dense, well cemented & tight w/ no vis. porosity

Lm- A/A

Sh- Black Gray Maroon, fissile & carbonaceous, waxy, gritty & earthy

Sh- Gray, argillaceous

CHEROKEE SAND 3967' (-1847) E-LOG 3977' (-1857) Ss- Few frosted, small to med. grained clusters, well cemented angular to sub-rounded, poorly sorted, consolidated. varying from light Ca cementation to arenaceous ls & sandy shale

Ss- Frosted-Clear, F-Med Grn, consolidated, poorly sorted, sub-rounded to sub-angular, mod cementation, TR STN, TR FO UPON CRUSH, LT YLW STRM CUT, NO ODR

60"- A/A, better sorting of shape and angularity, few w/ micro glauconite inclusions, TR STN, SL SHEEN UPON CRUSH, LT YLW FLOR.,NO ODR

Sh- White Maroon, gummy argillaceous clumps

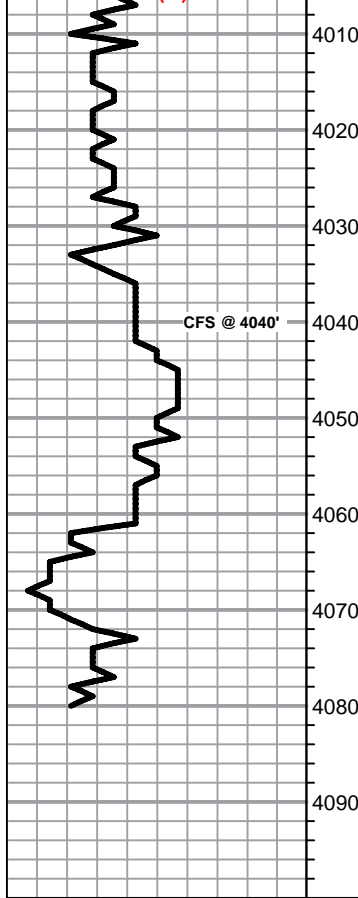
SHORT TRIP SURVEY 1 1/2 deg

DST #1
3950 - 3990
CHEROKEE SAND
30-45-30-60

445' TOTAL FLUID
245' VSOGMW
(40%W, 60%M, TR OIL & GAS)
200' VSOGMW
(94%W, 6%M, TR OIL & GAS)

SIP: 599-599#
HYD: 1960-1961#
CHLOR: 22K
Rw: 41 @ 62 deg.

CHER_S...



Chert- Maroon Yellow Salmon Mint Green, varying degrees of chert ranging from gritty semi-dolomitic to fresh bedded vitreous & fsl.

Chert- A/A w/ mostly yellow vitreous chert

ARBUCKLE 4032' (-1912) E-LOG 4033' (-1913) Dolomite/Chert- Cream Tan White, VF-FXLN, dense, well cemented, tight w/ dense microXLN porosity

Dolomite/Chert- White Off White, VFXLN, dense, gritty dolomitic chert w/ min. vis. porosity, barren, few pcs of soft white chalk

Dolomite- Cream/Maroon, FXLN, loosely cemented, semi-friable, consistent fnXLN porosity, barren, arenaceous appearance

Dolomite- Cream Buff, FXLN, dense, well cemented, mod. dev. w/ consistent XLN porosity, several pcs of white vry dense dolomitic chert

Ss-White Yellow, Med Grn, loose dolomitic cementation, vry friable, mature rounded grains, various dark colored waxy shale

Ss/Sh- Gross abundance of Clear Fn Grn, mature rounded grain clusters, vry friable & argillaceous white & mint green shale

Chert- White Maroon Yellow, dense vitreous chert w/ no vis. porosity

RTD 4080' (-1960) LTD 4081' (-1961) @ 18:04 9-26-2016

RTD
CFS 20-40-60
TOH FOR LOG

