

PROPOSED

| | |
|------------|--------------------------------------|
| REVISION: | LOCATION: |
| 10/12/2016 | 26-T31S-R19W COMANCHE COUNTY, KANSAS |

| | |
|----------|------|
| WELL No: | REV. |
| 1-26 | |

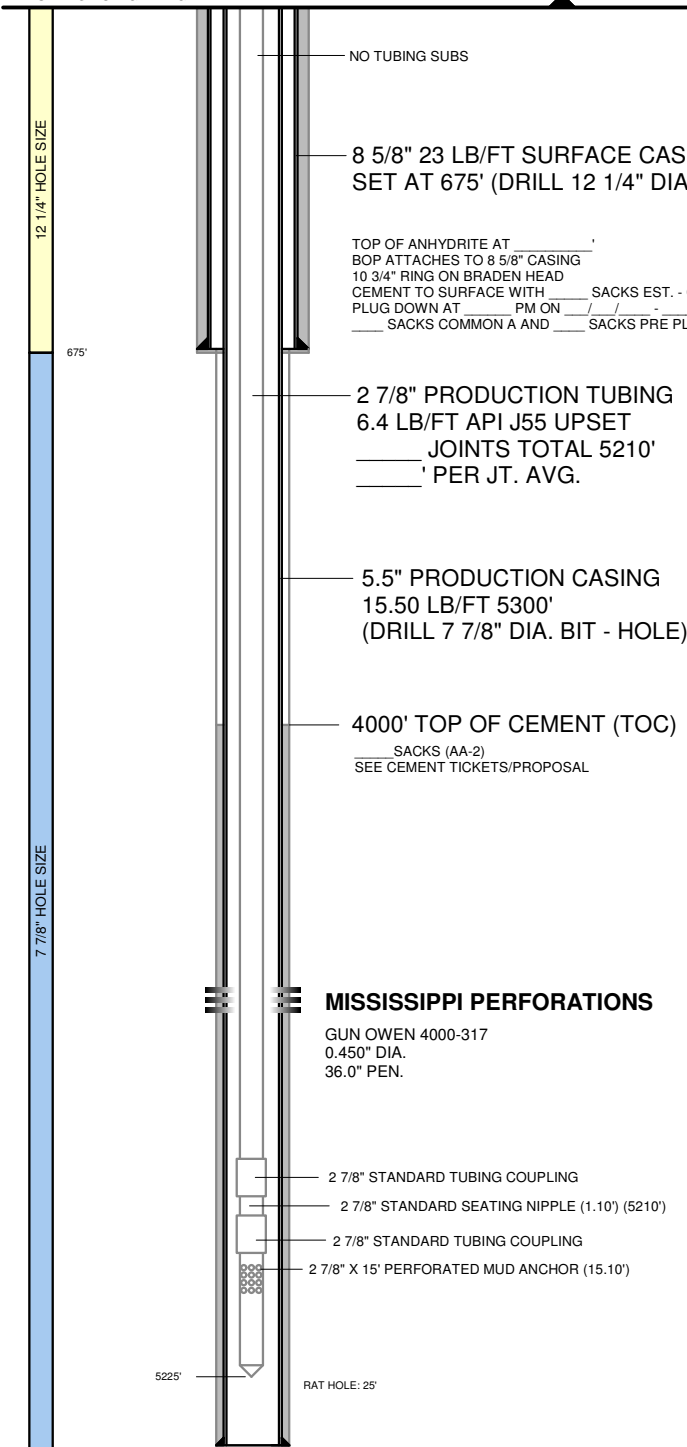
SURFACE TEMP: 70 DEG F MAX

K.B.: 7'

5 1/2" X 2 7/8" TUBING HEAD

G.L. ELEVATION 2146' (SHL)

SET TOP CLPG 12" AGL



NOTES:

PUMPING UNIT: 228 - 246 - 86 (86" SURFACE STROKE) CONVENTIONAL UNIT
 C106 GAS ENGINE OR 40 HP ELECTRIC MOTOR
 RUN OFF OF WELLHEAD GAS OR ELECTRIC WITH SPOC DRIVE
 RUN TIME: 24 HRS PER DAY
 1.25" X 18' POLISHED ROD WITH LINER ASSEMBLY (18')
 1.50" HARD FACED POLISHED ROD LINER X 8' (8')
 4' AND 8' PONY RODS ON TOP (7/8" GRADE D) (12')
 1.50" X 8' HARD LINED POLISHED ROD LINER WITH SEAL (8')
 - 7/8" GRADE D SUCKER RODS ()
 - 3/4" GRADE D SUCKER RODS () (60% 7/8" AND 40% 3/4")
 4 - 1 1/2" SINKER BARS ON BOTTOM (100')
 ONE 2' X 7/8" GRADE D PONY ROD ON BOTTOM (TOP OF PUMP) (2')
 SPEED RANGE: 4 TO 12 SPM (400 BPD)
 EST. SPEED: 8 SPM (255 BPD)

TUBULARS

| PURPOSE SIZE | CONDUCTOR 13 3/8" | SURFACE 8 5/8" | INTERMEDIATE | PRODUCTION 5 1/2" | PROD. TUBING 2 7/8" |
|---------------|-------------------|----------------|--------------|-------------------|---------------------|
| WEIGHT | NONE | 2,946 PSIG | NONE | 15.5 LB/FT | 6.40 LB/FT |
| GRADE | NONE | J-55 | NONE | J-55 | J-55 |
| BURST | NONE | 24.0 LB/FT | NONE | 4,812 PSIG | 7,265 PSIG |
| COLLAPSE | NONE | 381,395 LBF | NONE | 4,043 PSIG | 7,676 PSIG |
| YIELD | NONE | 1,434 PSIG | NONE | 248,274 LBF | 99,661 LBF |
| CAPACITY | NONE | 0.064 BBL/FT | NONE | 0.024 BBL/FT | 0.006 BBL/FT |
| THICKNESS | NONE | 0.2640" | NONE | 0.2750" | 0.2170" |
| ID | NONE | 8.0970" | NONE | 4.9500" | 2.4410" |
| DRIFT ID | NONE | 7.9720" | NONE | 4.8250" | 2.3470" |
| AREA | NONE | 51.49 IN2 | NONE | 4.514 IN2 | 4.68 IN2 |
| SETTING DEPTH | NONE | 675' | NONE | 5,300' | 5210' TO PUMP |
| LENGTH | NONE | 675' | NONE | 5,300' | NEED 5250' |
| FOB | NONE | CHASE, KS | NONE | CHASE, KS | CHASE, KS |

| | |
|--------------|------------|
| DATE | 10/06/2016 |
| APPROVED BY | B. KELSO |
| AFE | 263119 |
| API No. | TBD |
| GL ELEVATION | 2146' |
| KB | 7' |
| KB ELEVATION | 2153' |
| RIG | KELSO |

PBTD: 5250' MD TVD
 RTD: 5300' MD TVD
 LTD: 5300' MD TVD
 DOWNHOLE TEMP: 132 DEG F (EST.)

DOWN HOLE SUCKER ROD PUMP:

2.0000" INSERT PUMP (BHD) -- BULLET PROOF
 PUMP LENGTH: 14' (NICARD AND SS)
 BOTTOM HOLD DOWN TYPE TRAVELING BARREL
 2" X 7/8" PONY ROD ON TOP OF PUMP
 8" GAS SEPERATOR ON THE BOTTOM
 PUMP INTAKE DEPTH: 5210'
 PUMP IS SETTING BELOW PERFORATIONS -- 8 TANK FRAC
 (MAY NEED TO HAVE PUMP SETTING ABOVE PERFS FOR TWO MONTHS AFTER FRAC AND THEN LOWER PUMP BELOW)

PROCTOR #1-26
 COMANCHE COUNTY, KANSAS
 26-T31S-R19W
 SHL: 330' FNL, 330' FWL
 BHL: 330' FNL, 330' FWL
 SILVER SPUR FIELD