



**TRILOBITE  
TESTING, INC**

# DRILL STEM TEST REPORT

Vincent Oil Corporation  
200 W Douglas Ave # 725  
Wichita, KS 67202  
ATTN: Tom Dudgeon

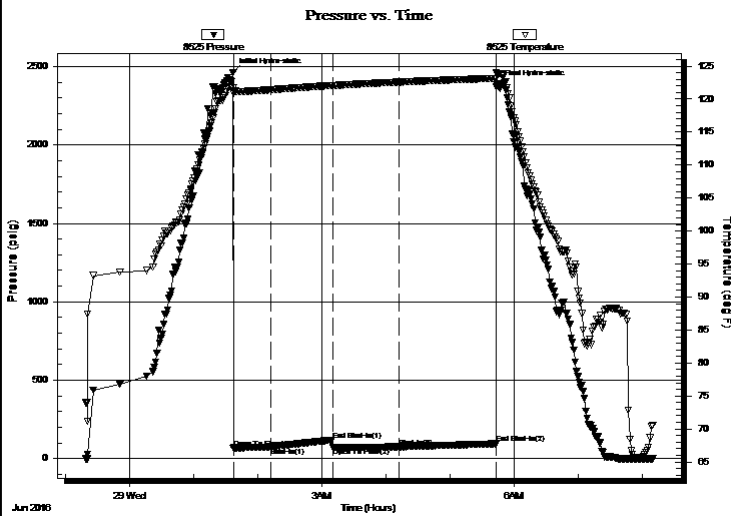
**4-28S-24W Ford**  
**Fischer 1-4**  
Job Ticket: 57996 **DST#: 1**  
Test Start: 2016.06.28 @ 23:19:01

## GENERAL INFORMATION:

Formation: **Conglomerate**  
Deviated: No Whipstock: ft (KB)  
Time Tool Opened: 01:37:16  
Time Test Ended: 08:10:16  
Interval: **5037.00 ft (KB) To 5150.00 ft (KB) (TVD)**  
Total Depth: 5236.00 ft (KB) (TVD)  
Hole Diameter: 7.88 inches Hole Condition: Good  
Test Type: Conventional Straddle (Initial)  
Tester: Leal Cason  
Unit No: 74  
Reference Elevations: 2559.00 ft (KB)  
2546.00 ft (CF)  
KB to GR/CF: 13.00 ft

**Serial #: 8525 Inside**  
Press@RunDepth: 74.79 psig @ 5038.00 ft (KB) Capacity: 8000.00 psig  
Start Date: 2016.06.28 End Date: 2016.06.29 Last Calib.: 2016.06.29  
Start Time: 23:19:02 End Time: 08:10:16 Time On Btm: 2016.06.29 @ 01:37:01  
Time Off Btm: 2016.06.29 @ 05:44:01

TEST COMMENT: IF: Weak 1 inch Blow , Died Off to 1/4 inch  
IS: No Blow Back  
FF: No Blow  
FS: No Blow Back



## PRESSURE SUMMARY

Time (Min.)	Pressure (psig)	Temp (deg F)	Annotation
0	2462.31	121.79	Initial Hydro-static
1	67.63	120.91	Open To Flow (1)
35	74.62	121.42	Shut-In(1)
93	119.38	122.08	End Shut-In(1)
94	73.27	122.06	Open To Flow (2)
155	74.79	122.59	Shut-In(2)
246	95.11	123.16	End Shut-In(2)
247	2387.20	123.81	Final Hydro-static

## Recovery

Length (ft)	Description	Volume (bbl)
10.00	SGCM 5%G 95%M	0.05

## Gas Rates

	Choke (inches)	Pressure (psig)	Gas Rate (Mcf/d)





**TRILOBITE  
TESTING, INC**

# DRILL STEM TEST REPORT

## FLUID SUMMARY

Vincent Oil Corporation

**4-28S-24W Ford**

200 W Douglas Ave # 725  
Wichita, KS 67202

**Fischer 1-4**

Job Ticket: 57996

**DST#: 1**

ATTN: Tom Dudgeon

Test Start: 2016.06.28 @ 23:19:01

### Mud and Cushion Information

Mud Type: Gel Chem

Cushion Type:

Oil API:

deg API

Mud Weight: 9.00 lb/gal

Cushion Length:

ft

Water Salinity:

ppm

Viscosity: 54.00 sec/qt

Cushion Volume:

bbbl

Water Loss: 7.20 in<sup>3</sup>

Gas Cushion Type:

Resistivity: ohm.m

Gas Cushion Pressure:

psig

Salinity: 3100.00 ppm

Filter Cake: 0.02 inches

### Recovery Information

Recovery Table

Length ft	Description	Volume bbl
10.00	SGCM 5%G 95%M	0.049

Total Length: 10.00 ft      Total Volume: 0.049 bbl

Num Fluid Samples: 0

Num Gas Bombs: 0

Serial #:

Laboratory Name:

Laboratory Location:

Recovery Comments:

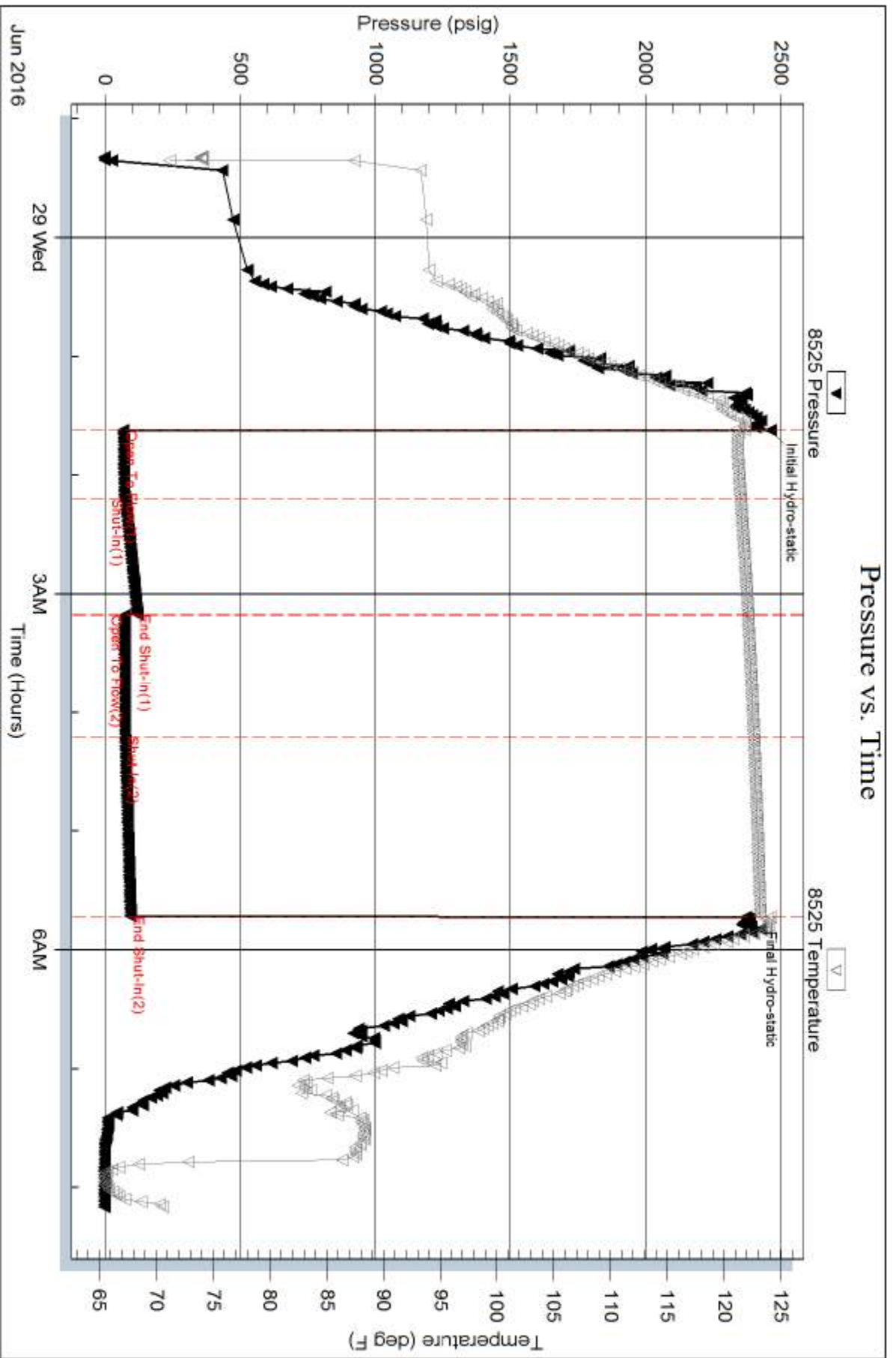
Serial #: 8525

Inside

Vincent Oil Corporation

Fischer 1-4

DST Test Number: 1



Trilobite Testing, Inc

Ref. No: 57996

Printed: 2016.06.29 @ 08:27:13

