



Scale 1:240 Imperial

Well Name: Fischer 1-4
 Surface Location: 4-28S-24W 330' FNL 2385 FEL
 Bottom Location:
 API: 15-057-20972-0000
 License Number: 5004
 Spud Date: 6/21/2016 Time: 7:00 PM
 Region:
 Drilling Completed: 6/28/2016 Time: 8:31 AM
 Surface Coordinates: 330' FNL & 2385' FEL
 Bottom Hole Coordinates:
 Ground Elevation: 2546.00ft
 K.B. Elevation: 2559.00ft
 Logged Interval: 2500.00ft To: 5230.00ft
 Total Depth: 5230.00ft
 Formation: Pawnee
 Drilling Fluid Type: Chemical Mud

OPERATOR

Company: Vincent Oil Corporation
 Address: 200 W Douglas
 Ste. 725
 Wichita, KS 67202
 Contact Geologist: Dick Jordan
 Contact Phone Nbr: 316.262.3573
 Well Name: Fischer 1-4
 Location: 4-28S-24W 330' FNL 2385 FEL API: 15-057-20972-0000
 Pool: WILDCAT Field: WILDCAT
 State: KS Country: USA

CONTRACTOR

Contractor: Duke Drilling Co. Inc.
 Rig #: 9
 Rig Type: Rotary
 Spud Date: 6/21/2016 Time: 7:00 PM
 TD Date: 6/28/2016 Time: 8:31 AM
 Rig Release: 6/29/2016 Time: 6:30 PM

LOGGED BY

Company: Vincent Oil Corporation
 Address: 200 W Douglas
 Ste 725
 Wichita, KS 67202
 Phone Nbr: 316.262.3573
 Logged By: Geologist Name: Tom Dudgeon

ELEVATIONS

K.B. Elevation: 2559.00ft Ground Elevation: 2546.00ft
 K.B. to Ground: 13.00ft

TOTAL DEPTH

Measurement Type:	Measurement Depth:	TVD:
RTD	5230.00	5236.00
LTD	5236.00	5236.00

SURFACE CO-ORDINATES

Well Type:	Vertical	Latitude:	37.6472056
Longitude:	-99.9507779		
N/S Co-ord:	330' FNL		
E/W Co-ord:	2385' FEL		

DRILLING FLUID SUMMARY

Type	Date	From Depth	To Depth
Chemical Mud	6/21/2016	3828.00ft	5230.00ft

OPEN HOLE LOGS

Logging Company:	ELI		
Logging Engineer:	Jason Cappellucci		
Truck #:	3802		
Logging Date:	6/29/2016	Time Spent:	6
# Logs Run:	4	# Logs Run Successful:	4

LOGS RUN

Tool	Logged Interval	Logged Interval	Hours	Remarks	Run #
Dual Induction	0.00ft	5236.00ft	3.00		1
Comp Density/P	2600.00ft	5236.00ft	3.00		1
Micro	2600.00ft	5236.00ft	3.00		2
Sonic	0.00ft	5236.00ft	3.00		2

LOGGING OPERATION SUMMARY

Date	From	To	Description Of Operation
6/21/2016	0.00ft	5236.00ft	Logs ran successfully

CASING SUMMARY

	Surface	Intermediate	Main		
Bit Size	12.25 in				
Hole Size	12.25 in				
	Size	Set At	Type	# of Joints	Drilled Out At
Surf Casing	8.625 in	437 ft	23#	10	6/22/2016 11:00 AM
Int Casing					
Prod Casing					

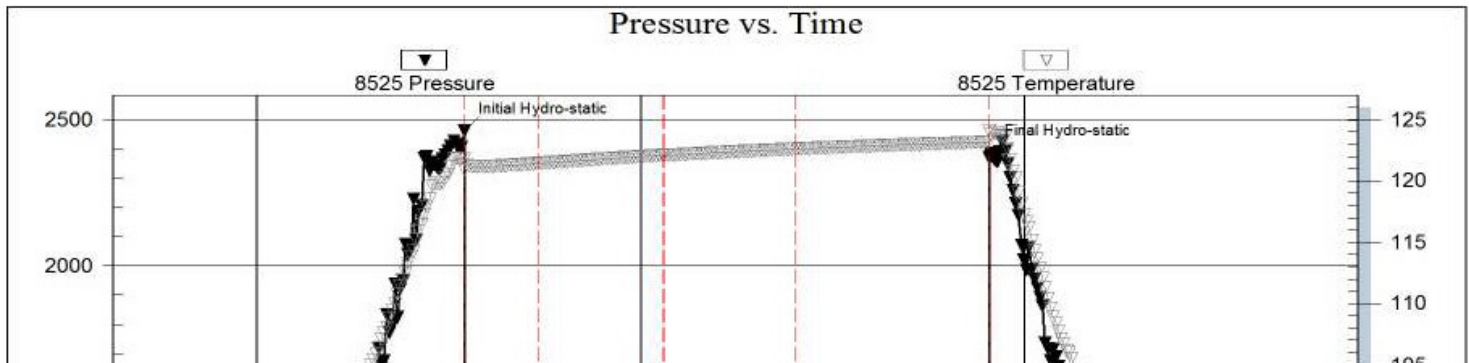
CASING SEQUENCE

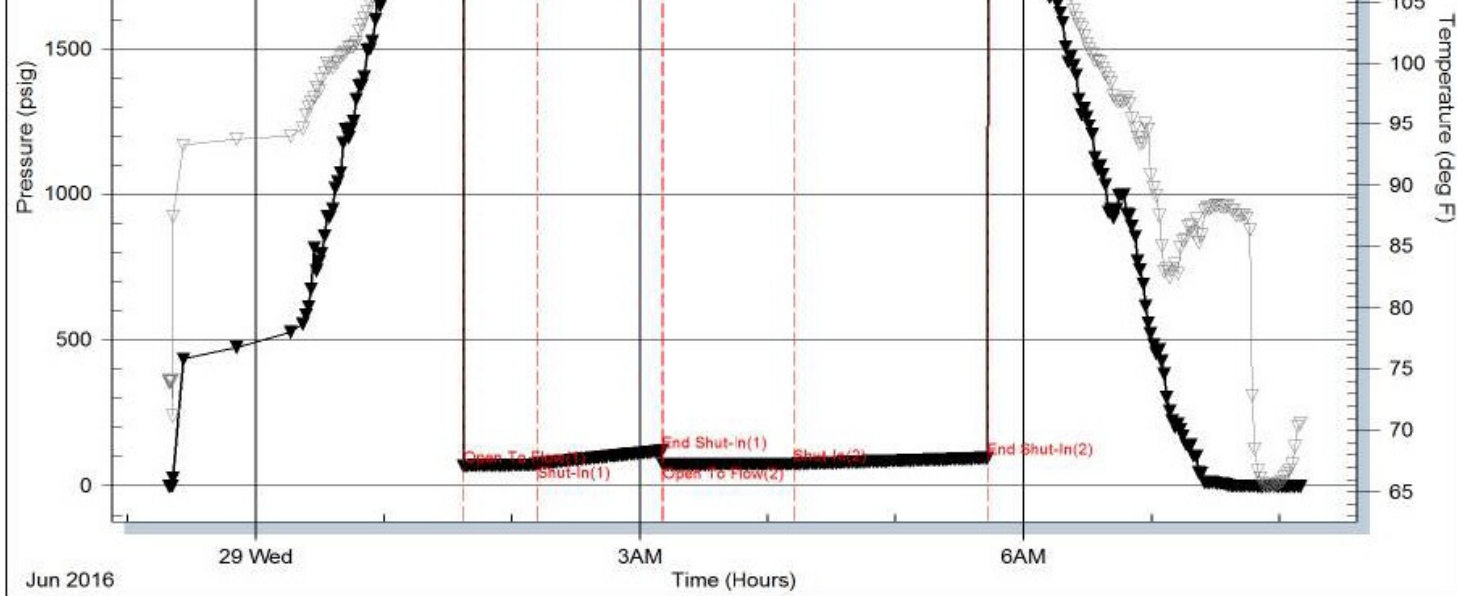
Type	Hole Size	Casing Size	At
Surface	12.25 in	8.63	437.00 ft

DST #1

Serial #: 8525 Inside Vincent Oil Corporation Fischer 1-4 DST Test Number: 1

Pressure vs. Time





Trilobite Testing, Inc

Ref. No: 57996

Printed: 2016.06.29 @ 08:27:13

ROCK TYPES



ACCESSORIES

MINERAL

- ⊥ Calcareous
- ▲ Chert, dark
- ⊕ Chert Pebble black
- ∩ Glauconite
- Heavy, dark minerals
- P Pyrite
- Sandy
- Silty
- ∕ Euhed rhombs of dol or c
- △ Chert White

FOSSIL

- Crinoids
- F Fossils < 20%
- φ Oolite

STRINGER

- ▨ Dolomite
- Sandstone

TEXTURE

- C Chalky

OTHER SYMBOLS

POROSITY TYPE

- × Intercrystalline
- φ Interoolitic
- V Vuggy
- P Pinpoint
- ∩ Moldic
- O Organic
- F Fracture
- e Earthy
- Fenestral

OIL SHOWS

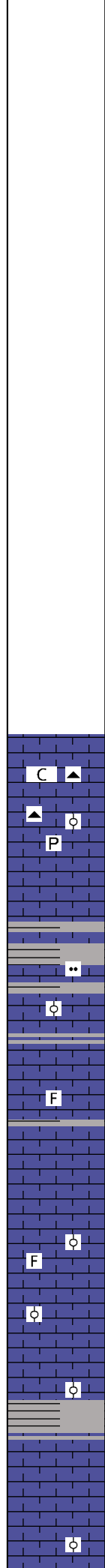
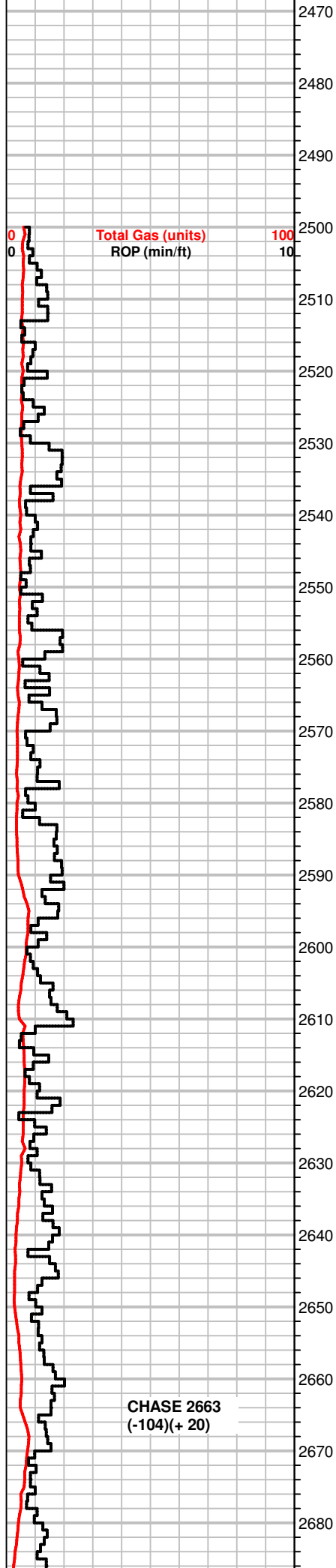
- Even Stn
- Spotted Stn 50 - 75 %
- Spotted Stn 25 - 50 %
- Spotted Stn 1 - 25 %
- Questionable Stn
- D Dead Oil Stn
- Fluorescence

INTERVALS

- Core
- DST

Printed by GEOstrip VC Striplog version 4.0.7.0 (www.grsi.ca)

Curve Track #01		Depth Intervals	Porosity Types	Interpreted Lithology	Oil Shows	Geological Descriptions	Comment
Total Gas (units)	ROP (min/ft)						
1:240 Imperial		2450					
0	0	2460					



MS, crm to lt. gray, rare tan, , hard to soft pcs, chalky matrix in part, some pcs shaly, fossils, scatt oolitic pcs, some Chert, brn/gray, micro oolitic, NS
 SH, gray, red, sandy, pyrite

SH, gray, dk. gray, silty
 MS, crm, f-xln, firm, some dense, fractured, brn/gray f-gr oolites in crm chalky matrix, NS, rare edge stn in dry

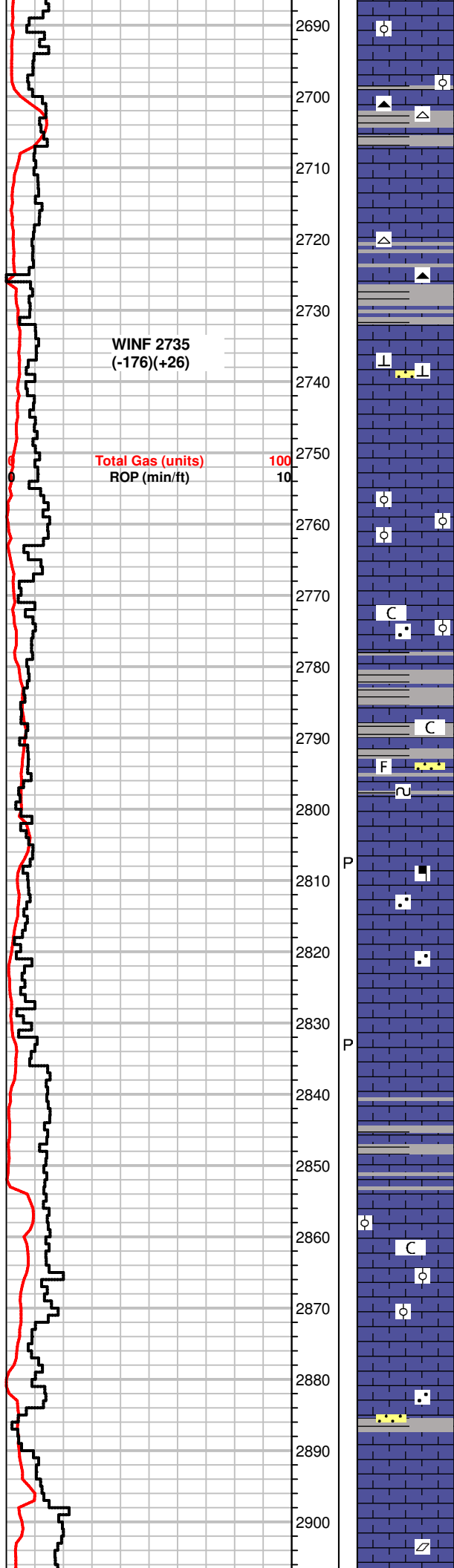
MS, crm to gray, f-xlnm, friable, scatt fossil frgmts, NS

MS, gray, vf oolitic/gritty txt, firm to hard, scatt fossils, rare SS clusters, clear, sub angular to sub rounded, well sorted, NS
 SH gray, lt. green, red, pyrite

MS, gray to lt. brn, f-xln to gritty pcs, hard to dense, fn oolitic pcs, rare dull fluor, NS
 SH, gray, red, sandy

MS, gray, shalky f-xln to massive txt, soft, friable pcs, f to m-gr oolitic in chalky matrix. rare dull fluor. NS

20' samples from 2600' to 3000'



WINF 2735
(-176)(+26)

Total Gas (units) 100
ROP (min/ft) 10

MS, gray to crm, off white, chalky to f-xln, hard, some pcs w/ gray f-gr oolites, silty, fossilif., rare Chert, white, gray, fossilif. scatt SH, gray

MS, gray to crm, chalky to f-xln, rare dull fluor, 1 free oil droplet in tray, poss. gas bubbles(sample oer 24 hrs old), Chert, white, gray, fossils,

MS, crm to lt. gray, some tan, f-xln to sandy txt, fossils, friable, SS clusters, gray, calcareous in part, well sorted, sub angular, NS

MS, crm to gray, f-xln, massive txt in part, scatt oolitic pcs, f to m-gr ooids, fossilif., soft pcs, shaly in part, SH, red, gray

MS, gray to tan, f-xln, rare co gr calcite inclusions, scatt oolites in soft chalky to sandy matrix, friable SH, influx, sea green, gray, red

MS, gray to crm, tan, massive to chalky, txt, rare oolitic pcs, f-gr(tan) pcs, scatt fossilif. pcs, calcite crystal inclusions, dull fluor, rainbow show in tray, SS clusters, gray, glauc, dk. minerals

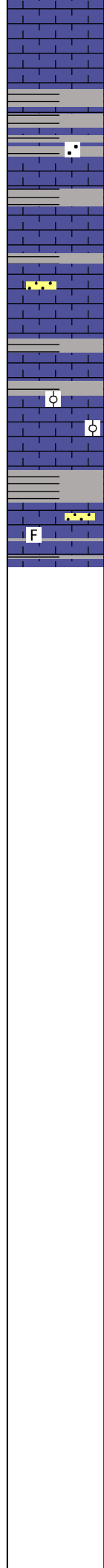
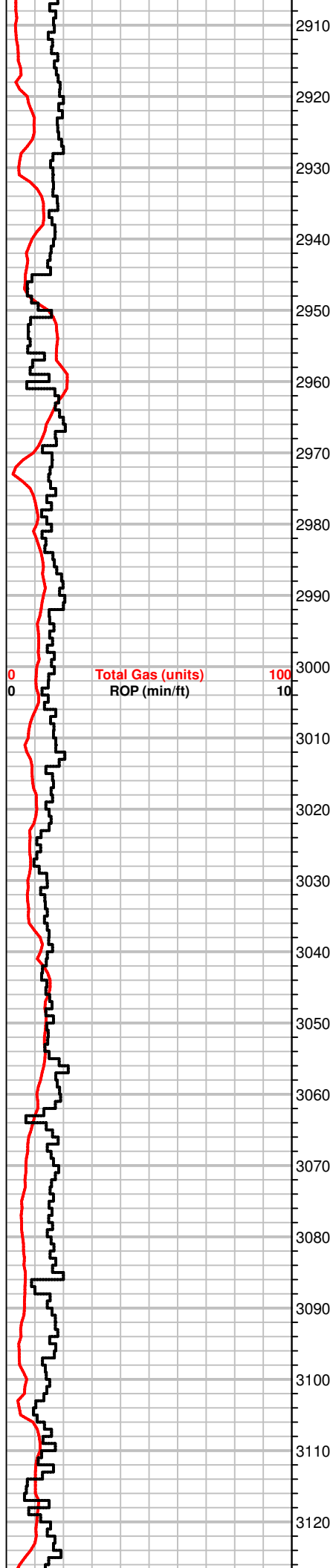
MS, crm, f-xln, dense, some dk. mineral inclusions, some lt. gray, soft, some firm, inter x-ln por., dull fluor, NS, pp por. SH, red, gray, sandy pcs throughout

MS, gray, f-xln, girty txt, dense to hard, some sandy pcs, NS, pp por.

MS, crm to gray, f-xln, gritty to sandy txt, firm, calcite, some fossils, oolitic pcs in chalky matrix, rare pcs w/ mineral fluor, SH, green, gray, dk. gray, pyrite

MS, lt gray, f-xln, gritty, peloids, SS clusters, red, brn, gray, friable, soft, well sorted, rounded, NS

MS, gray to lt. gray, f-xln, gritty pcs, tight, Co. gr calcite frmnts scatt fluor, oil droplets in tray, rainbow show



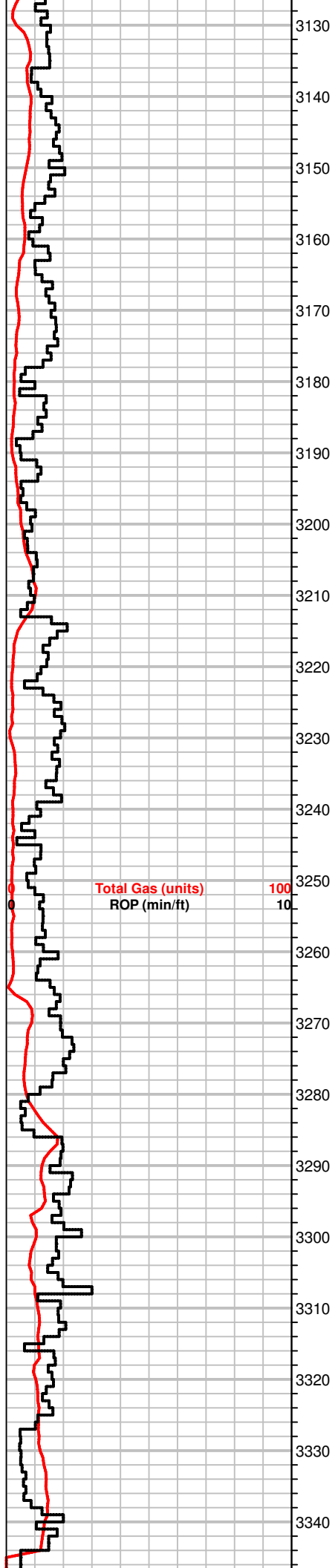
SH, red, green, gray, sandy
MS, gray, f-xln, firm, dense, NS

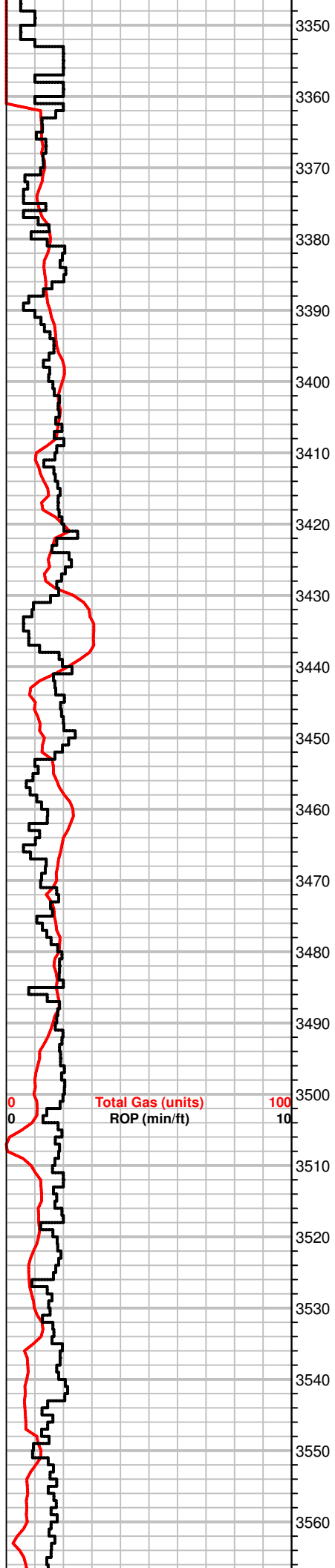
SH, red, gray, brn, SS clusters, tan, angular, sorted, friable, NS

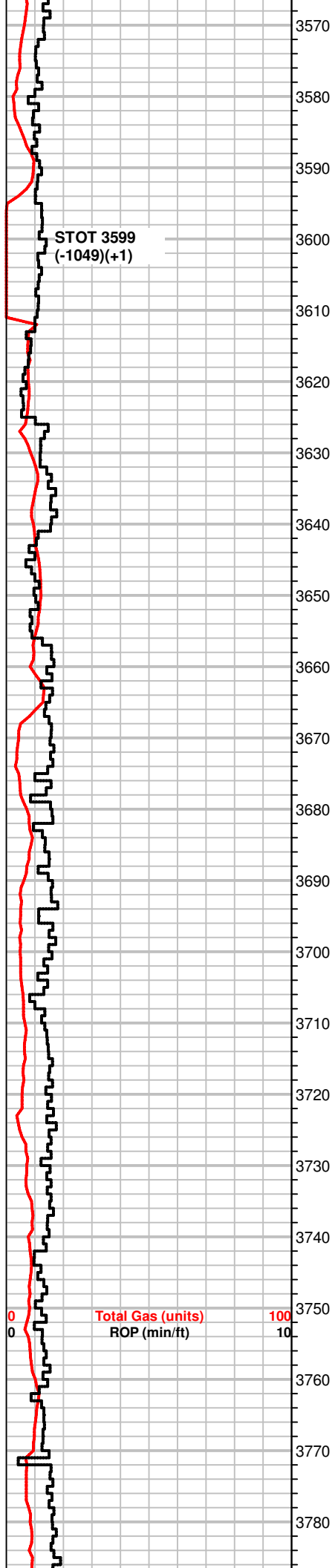
MS, gray, lt. gray, crm, f-xln, hard, f-gr, oolitic pcs w/ chalky matrix, pyrite
SH, red, gray

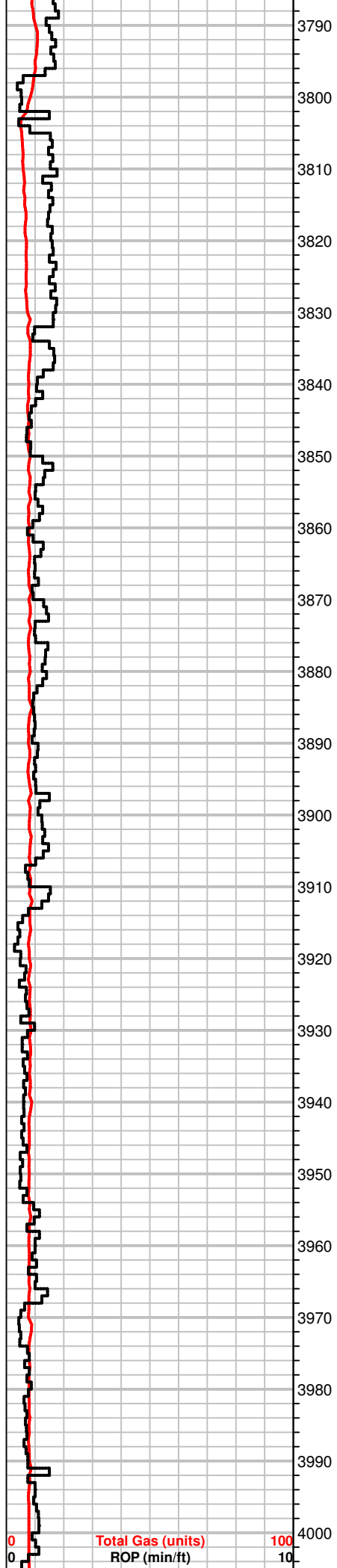
Decrease in MS, crm, gray, rare tan pcs, f-xln, sandy, fossilif.
Influx SH, gray, lt. gray, sandy pcs.

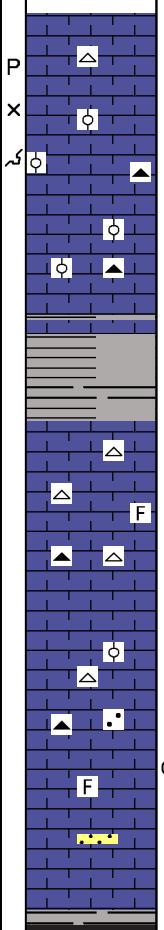
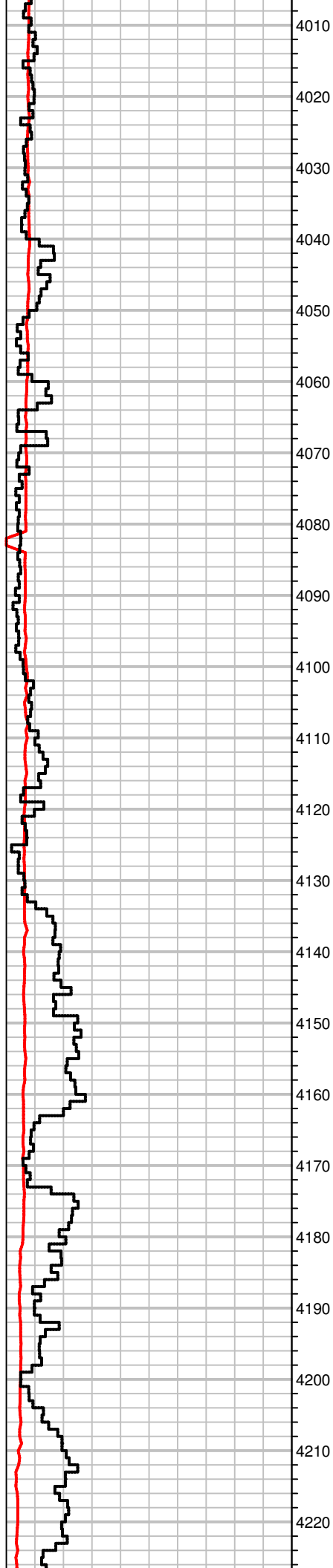
F











MS, crm to lt. brn, f-xln, hard, fossilif, some sandy pcs, pp por.
Chert, white, some SH, green

MS, tan to lt. brn, f-xln gritty txt, hard, dull fluor, NS, pp, int-xln,
moldic por.
SH, gray, green

MS-WS, crm to gray, vfx-ln, f-gr oolitic, fusulinids, scatt mineral
fluor, Chert, gray, scatt gray SH

MS, crm to tan, f-xln, gritty txt, micro oolitic pcs, fossilif., Chert,
white, brn, scatt SH, green, gray

MS, gray to lt. brn, mic-xln, firm, friable gritty pcs, fossilif, NS

SH, gray, MS, gray to crm, scatt off white, soft, chalky to sandy txt,
firm, scatt fossils, rare Chert, white, gray, fossilif.

MS, crm to lt. tan, lt. gray pcs scatt, f-xln, sandy pcs, hard, scatt
fossil frgmts, some fusulinids, SH, grays, some silty, rare Chert,
gray to white, fossilif.

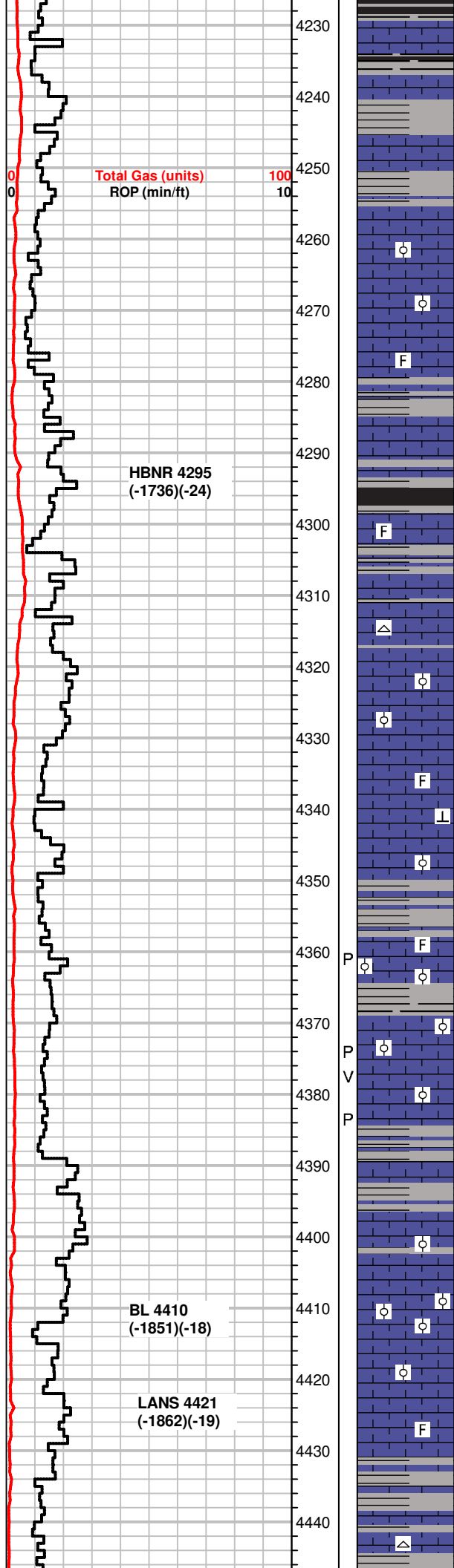
MS, gray to crm, f-xln, hard, crm pcs sandy/silty, soft, Chert, white
to gray, fossils, rare SH, gray

MS, gray to crm and tan, f-xln, gritty silty txt, some pcs tite, dense,
scatt fossil frgmts, lt. edge strn in dry, Inc, in SH, grays, green

MS, crm to gray, silty, some dense, scatt fossils, SS clusters, tite,
well sorted

SH, blk, dk, gray

**GEOLOGIST ON
LOCATION @ 8:45 AM-
4190'
6/26/2016**



MS, crm to brn, f-xln, dense to firm pcs, NS

SH, dk. gray, silty
MS, crm to gray, f-xln, gritty txt, hard

SH, dk. gray, silty
MS, crm, f-xln, gritty txt, hard, sandy in part, NS

MS, crm to lt. gray, f-xln to chalky, firm to hard, scatt mottled pcs, dec. in SH, dk. gray

MS, crm to lt. gray, f-xln, chalky pcs, some sub oolitic, scatt fossil frgmts, scatt SH, brn, striated, dk. gray

MS, white to crm, chalky to gritty txt, firm to soft, fossil frgmts, NS

MS, crm to off white, chalky in part, f-xln, firm, some lt. gray, f-xln massive txt, hard, NS
SH, grays, dk. gray

MS, crm to off white, f-xln, to gritty txt, hard to firm, fossils, scatt Chert, brn, fossils, scatt SH, dk. gray, blk

Decr. in SH, blk, MS, crm to lt. gray, m to f-xln, fossils, NS, Chert frgmts, white

MS-WS, lt. gray to crm, gritty to silty txt, oolitic to sub oolitic, dark ooids in a crm matrix, hard to firm, NS, SH, lt. gray

SH, lt. grays, MS, crm to brn, mottled pcs scatt, f-xln, firm to hard, some gritty, fossils, tite cement

MS, crm to lt. gray, vf-xln, gritty txt, fossil frgmts in a tite calcite matrix, some mineral inclusions, NS

MS, white to crm, vf- to mic-xln, scatt chalky pcs, most hard, suboolitic, fossilif.

Scatt SH, dk. gray, brn
MS, brn, mic-xln to massive, dense, fossils

MS-WS, crm to off white, f-xln, suboolitic to oolitic, f-gr, scatt fossils, hard, mineral fluor, NS, pp por.
SH, blk, grays

MS, crm to tan, f-xln, hard, dense, some gritty, pp & vuggy por. scatt SH gray

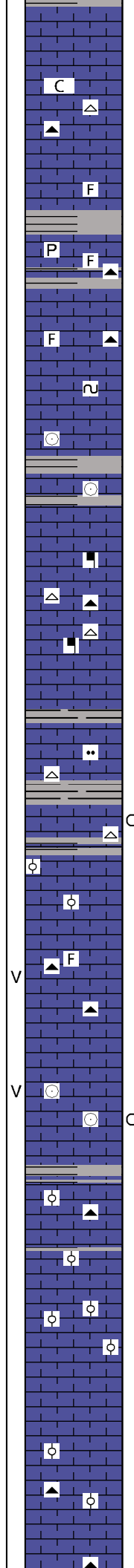
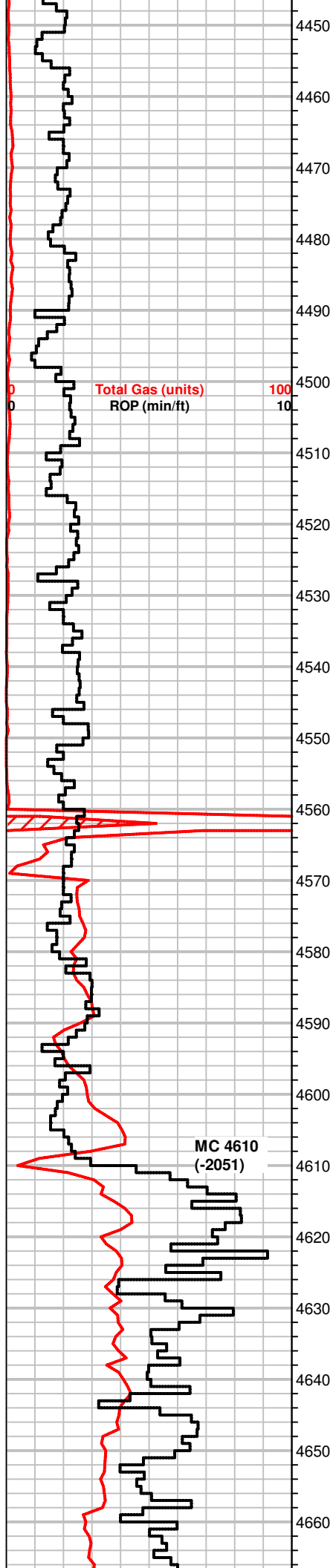
MS, gray to brn, tan, f-xln, fritty txt, some chalky pcs, fossils, firm to hard pcs, silty in part, SH, rare blk, green, gray

MS, crm to off white, f-xln to mic-xln, sub oolitic, dense, mineral fluor, NS

MS-WS, crm to tan, f-xln, oolitic, m-gr ringed ooids some elongated, firm, sli. chalky matrix, NS, scatt SH, gray, blk, pyrite, striated

MS-WS, crm to brn, scatt mottled pcs, ooids, fossilif., dense to hard pcs, scatt mineral fluor, NS

SH, blk, gray, green
MS, crm to brn, f-xln, dense, fossil frgmts, Chert, white, gray



MS, crm to off white, mic-xln, dense
SH, gray, green

MS, tan to crm, gritty to massive txt, dense, some chalky pcs, fossils, friable, Chert, tan, gray
SH, gray, brn

MS, gray to crm, f-xln, dense, hard, scatt fossils, Chert, crm, gray, fossils
SH, dk. gray, green

SH, blk, gray, pyrite, MS, crm, f-xln, gritty txt, fossilif., Chert, blk, fossil frgmts

MS, gray to crm, f-xln, hard, dense, gritty txt, Chert, gray, fossilif.
SH, grays

MS, A.A., dec, in gray pcs, scatt glauc, some pcs sli. chalky, NS, dull fluor

MS, crm to tan, f-xln, firm, friable, scatt fossils(crinoids), SH, red, green

MS, crm, mic-xln to f-xln, hard to dense, fossils, mineral specs, NS

MS, brn to tan, f to m-xln, chalky in part, mineral specs, Chert, white, brn, fossilif., rainbow show in tray, barren in dry

MS-WS, gran to crm, mottled, gritty txt, hard, mineral inclusions, scatt fossils, barren dry samples, NS
SH, blk to dk. gray

MS, crm to tan, f-xln, some gray, sub oolitic fossils, hard, some shaly/silty in part, NS Chert, white, crm, fossils

SH, gray, green, blk
MS, crm to tan, gray, silty, hard, fossils, Chert, white, opaque, fossils, lt. edge stn in dry

MS, gray to tan, f-xln, hard, some scatt mottled pcs, fossilif, gritty sub oolitic pcs, Chert, blk, gray, fossilif.

MS, crm to tan, gray, f-xln, hard, dense pcs throughout, some pcs sli. chalky, scatt fossils, buggy por.dec in Chert, blk, gray, fossilif.
SH, red, gray

MS, crm to gray, f-xln, chalky, dense so soft, fossils(crinoids), vuggy por. rare edge stn in dry
SH, dk. green, gray

Inc in SH, gray, green
MS, crm to tan, mic- to f-xln, dense, sub oolitic pcs, mineral fluor, NS, Chert, gray

MS, gray to brn, f-xln, gritty to silty txt, scatt pcs sub oolitic, NS
SH, blk, gray, green, red

MS-WS, crm to tan, f-xln, sub oolitic to micro oolitic pcs, firm to hard, some SH, gray to green, scatt blk

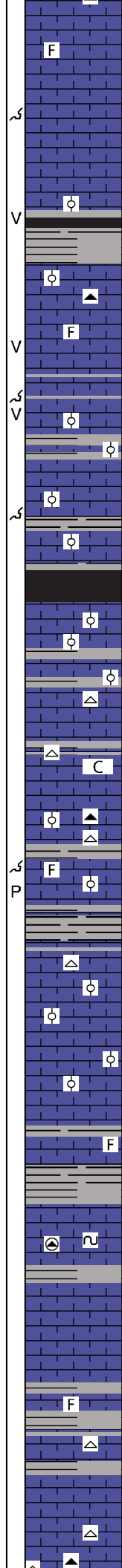
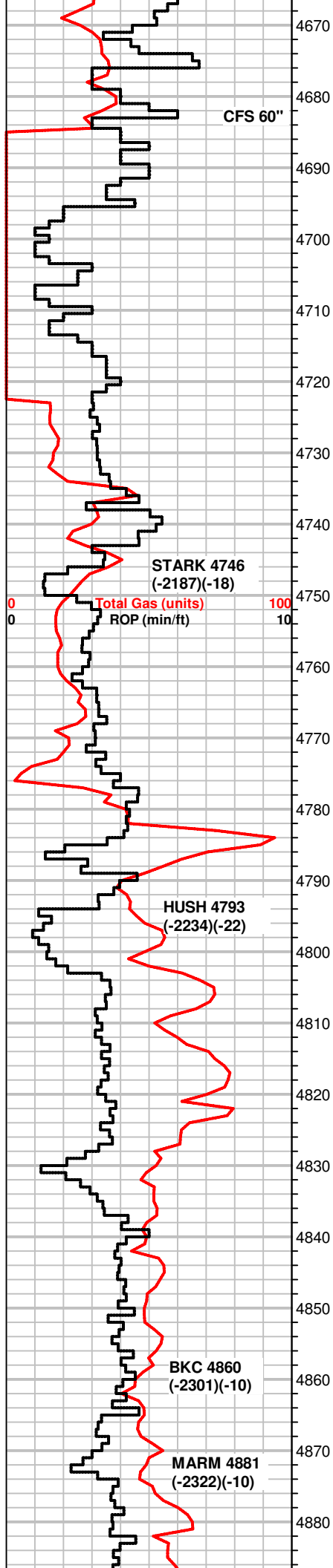
MS, crm to gray, f to mic-xln, some pcs chalky, rare fossils
SH, gray, dk.gray, green

MS, crm to tan, gray pcs, f-xln, suboolitic, fossils, mineral, some chalky pcs, Chert, gray, fossilif., Scatt SH, gray

MS, crm to lt. gray, mottled in part, mic to f-xln, earthy txt in part, hard, dull fluor, NS, Chert, brn, crm, fossilif

Lighter gas test

Re-wired agitator-wind disconnected the power supply to the agitator



MS, crm, mic-xln to massive txt, dense, hard, scatt fossils
SH, gray, green

MS, crm to tan, f-xln to chalky pcs, gritty pcs scatt, firm to hard,
rare gray pcs, hard, pyrite, mineral inclusions, NS, moldic por.
some SH gray, green

MS, crm to tan, f to m-xln, chalky, friable to firm, scatt fossils, sub
oolitic pcs scatt., rare SH, blk, sli. gassy

WS-MS, crm to grn some gray, mottled, f-xln to chalky, some pcs
dense, sub oolitic, rare vuggy por. SH, blk, gassy, carbonaceous

MS-WS, crm to tan, some f-xln, gritty txt, hard, dense, fossilif.
some silty, gray pcs, dull fluor, NS Chert, gray, fossilif., blocky

MS-WS, crm to tan, f-xln, firm to hard, fossils, dull fluor, NS, vuggy
por.

WS-MS, crm to lt. gray, f-xln, sub oolitic fossilif., chalky pcs scatt.,
hard, most dense, vuggy to moldic por., Scatt SH, gray, green,
striated

Some SH, blk, gray, sli. carb
MS-WS, crm to gray, f-xln to early, dense pcs, most firm, rare m-gr
oolitic pcs, moldic por., lt edge stn dry

SH, blk, gray, green

MS, crm to lt. tan, sasive to mic-xln, dense, scatt fossil frgmts,
rare brn gritty pcs, oolitic to fossilif., lt. edge stn dry, Chert, tan, off
white

SH, gray, green
MS, crm to gray, f-xln, sli. gritty txt, fractured, some pcs chalky, dull
fluor, NS, rare Chert, white

MS, crm to brn/gray, f-xln, gritty txt, mineral specs, soft, NS
Chert, blk, white, fossils(crinoids) frgmts

MS-WS, crm to tan, massive to f-xln, vf-gr oolitic pcs, sof to dense,
fossils, pp and moldic por., NS
some SH, blk, carb., gray

SH, blk, carb.
MS, crm to brn, f-xln to earthy, soft to firm, fossil frgmts, calcite
veins, NS, Chert, white

MS, crm, mic to f-xln, dense, fossil/ooids in tite matrix, NS
carrying SH, blk, green

Some SH, gray, green
MS, crm, f-xln, A.A., some pcs sli. chalky, NS

SH, gray, green, dk. gray
MS, crm to lt. gray, f-xln, gritty txt, fossil frgmts, scatt minerals, silty
in part, pyrite, NS

MS crm to gray, shaly, f-xln ,soft to firm, rare glauc specss, NS,
Chert frgmts, white, brn
Dec. SH, gray, dk, gray, green

MS, gray, brn, crm, f-xln, earthy, shaly, hard, dull fluor, NS

MS, gray to crm, f-xln, earthy txt, some shaly pcs, dull fluor, NS

MS-WS, crm to gray, f-xln, dense, some pcs sandy, scatt fossils,
NS, Chert frgmts, tan
SH, dk. gray, green, brn

MS, crm, f-xln, chalky in part, firm, Chert, white, brn, scatt fossil
fgmts
SH. dec. amt. gray, green

**Bit Trip A 4683'
Pipe Strap: .11 Short to
board**

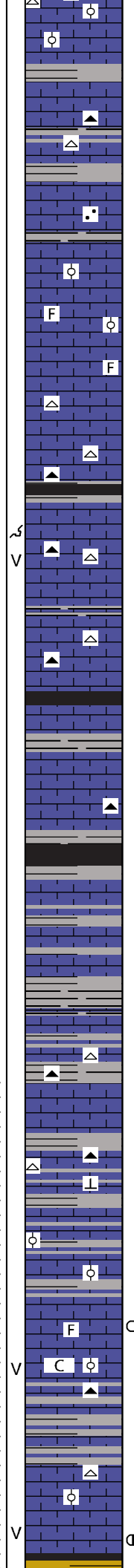
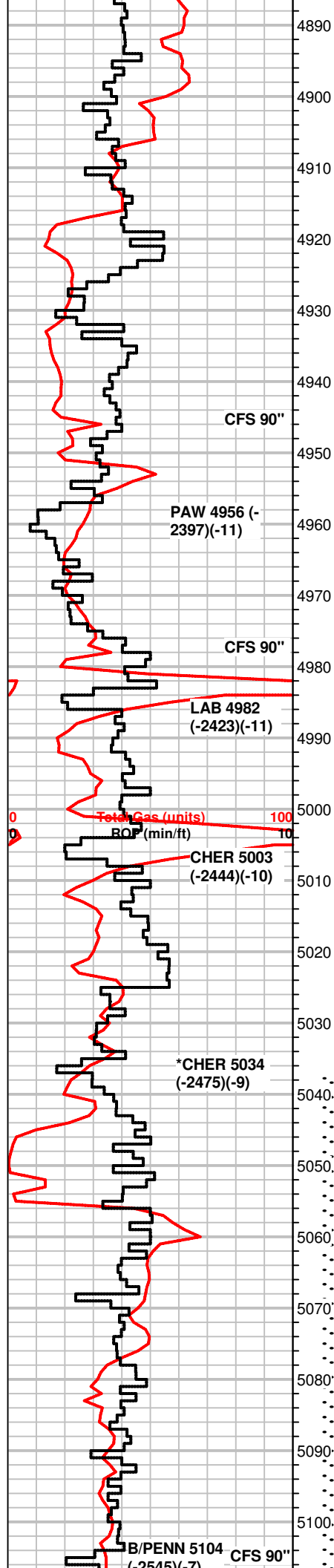
**4683-4723 Gas detector
not lagging due to faulty
geolograph electrical
connections-raw gas data
was available**

+4 UGK, shale gas

+27 UGK

+ 22 UGK

+52 UGK, shale gas



SH, blk, gray, green, rare sandy pcs
 MS-WS, crm to brn, f-xln, scatt oolitic/sub oolitic pcs, hard, scatt fossils, NS

MS, crm to gray, f-xln and dense to gritty and firm, chalky pcs, mineral fluor, NS, Chert, brn, tan, fossils
 SH, green, gray, rare blk

MS, rare WS, crm to brn, f-xln, hard/dense, fossils, NS, SH, grays, sandy in part

MS, crm to gray, f-xln, sandy in part, hard to dense, some oolitic(m-gr) brn and crm pcs, some fossilif., firm to friable
 SH rare blk, grays, greenish in part

MS, crm, f-xln to chalky, firm to friable, fossils/oolitic(f to m-gr), mineral fluor, no odor, no stn, no cut

MS, crm to tan, mic-f-xln pcs, some chalky, scatt dense, most firm, fossilif., fritty to silty in part, NS

MS, crm to tan, f-xln to chalky, fossilif./oolitic, mineral fluor, NS, rare Chert, white

MS-WS, crm to tan, f-xln, dense, sub oolitic, scatt fossils, mineral fluor, NS some Chert, white, gray, fossils, scatt SH gray

SH, blk, carb., gray
 WS-MS, crm to tan, f-xln to chalky txt, oolitic to sub oolitic(m-gr) ooids in chalky matrix), sandy pcs, tite, no odor, spotty bright flour (25% of tray), light edge stn in dry, no cut, Chert, blk, white

MS-WS, crm to off white, m-gr oolitic, chalky txt,

MS, tan to crm, f-xln, firm to hard, some pcs dense, gritty txt in part, some pcs sub oolitic, Chert, white, blk

SH, blk, carb, gassy, dk. gray

MS, brn to crm, mic-xln to f-xln, soft to firm, dense looking, NS

MS, crm to tan, chalky to f-xln, some mic-xln, firm to dense, NS Chert, brn

SH, blk, gray, gassy

MS, crm, chalky, soft, f-xln, firm, NS
 SH, grays

MS, tan to brn, f-xln, hard, dense, some mineral specs, Chert, brn, scatt SH, gray, brn

MS, crm to brn, f-xln, mic-xln, dense looking, firm to hard, scatt fossils, Chert, opaque,
 SH, gray green, silty

SH, blk, gray, brn
 MS, crm to brn, mic to f-xln, dense to hard, scatt fossil frgmts (crinoids), NS, Chert, brn, white

MS, crm to tan, f-xln, soft to friable pcs, some oolitic, m-gr, deformed ooids in tite calcite matrix,
 SH, blk, gray

MS, crm to brn, f-xln to sli. chalky/shaly, firm to hard pcs, sub oolitic in part, rare fossils
 SH, blk, gray, silty

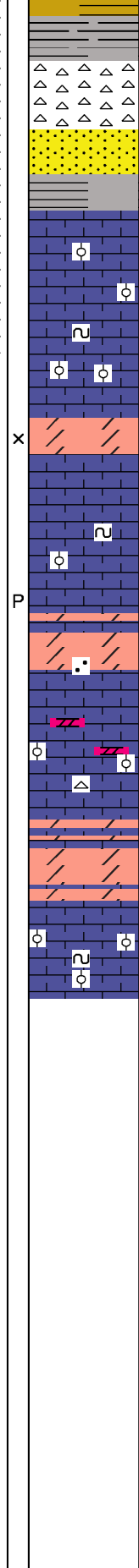
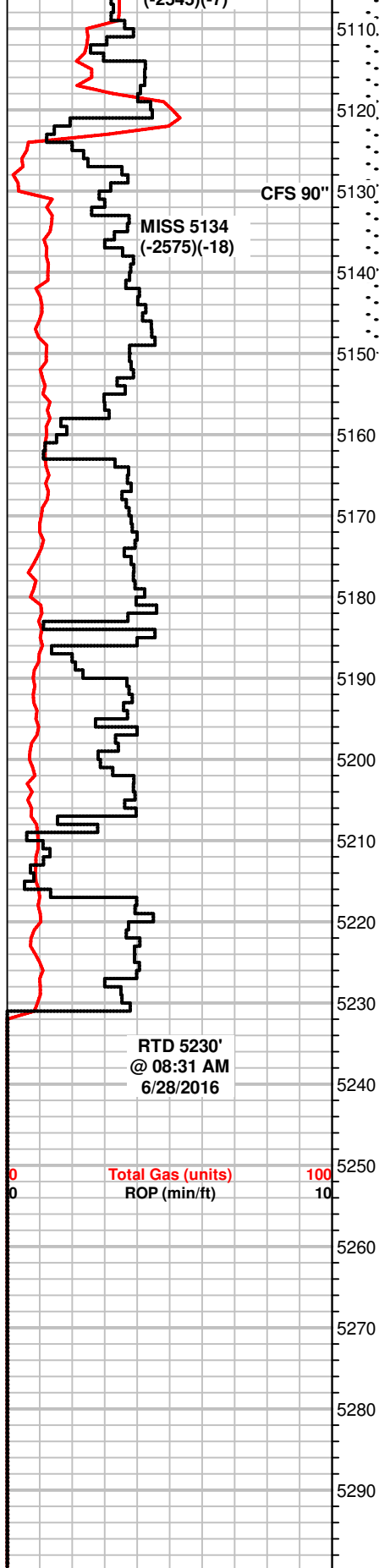
MS crm, mic-xln to earthy pcs, chalky to dense, hard, fossils, some calcite, rare bright fluor, lt. stn in dry(1 pc)

MS, crm to tan, f-xln, some dense pcs, chalky pcs scatt, fossils, sub oolitic, rare mineral fluor, Chert, brn
 SH, gray, pyrite(total replacement)

MS, crm to brn, mic to f-xln, dense, firm to hard pcs, rare chalky, fossils, scatt calcite, Chert, white, fossils,
 SH, gray, green

MS-WS, crm to brn, scatt off white, f-xln to chalky pcs, rare sub oolitic, fossils, calcite, few pcs w/ spotty bright fluor, spotty stn(10 pcs), slow milky cut(5 pcs), spotty stn in dry, no odor in bag

**DST #1 5037-5150
 STRADDLE
 30-60-60-90
 WB BLT TO 1"
 NBB
 NB
 NBB
 REC: 10' SGCM
 (5%G, 95%M)
 IH 2462#
 IF 68-75#
 ISIP 119#
 FF 73-75#
 FSIP 95#
 FH 2387#
 TEMP 124°F**



SH, sea green, blk, gray, maroon, yellow, varicolored

Chert, white, orange, fresh to weathered, blocky, fossils, rare spotty stn, no cut, no stn

SS clusters, white to green, well sorted, friable, no vis. show, Co. Qtz grns loose in tray

MS, crm to tan, f-xln, firm to hard, sub oolitic, dense, NS

MS, off white, f-xln, chalky pcs, soft to firm, sub oolitic in part, scatt fossils, NS

MS, off white to crm, vf-xln, massive txt(featureless) to sub oolitic pcs, m-gr ooids rare, glauc specs, NS

MS, off white, vf-xln, chalky pcs scatt, rare fossils, barren dry samples

Dolo, Limy, lt. brn, vf-sucrosic, tite-some soft pcs,s mineral fluor, no odor, NS, int-xln por.

MS-rare WS, crm to off white, f-xln, firm to chalky, soft pcs, rare fossils, glauc specs, NS

MS, rare WS, crm to off white, f-xln, frim to soft, chalky pcs common, rare fossils, glauc specs, rare pp por.

Dolo, gray, vf-sucrosic txt, tite/firm pcs, sandy in appearance, mineral fluor, NS

MS, crm to brn, f-xln, hard, scatt fossils, NS

MS, off white, f-xln to massive txt, hard to brittle, sub oolitic pcs, some pcs gray, vf-xln, dolomitic, rare lt. edge stn in dry rare Chert, white fresh

Dolo, lt gray to lt. brn, vf-sucrosic, friable to firm, sugary txt, mineral fluor, NS

MS-WS, brn to crm, f to m-xln, oolitic to sub oolitic pcs, fossils, brittle, rare glauc specs, rare lt. edge stn in dry

+30 UGK