

# GEOLOGIC REPORT

## DAVID J. GOLDAK

WICHITA, KANSAS  
Scale 1:240 (5"=100') Imperial  
Measured Depth Log

Well Name: Felder #1-6  
Location: Section 6 - T16S - R21W  
License Number: API: 15-135-25921  
Spud Date: 08 / 22 / 2016  
Surface Coordinates: 815' FSL and 1203' FEL  
SW - NW - SE - SE  
Region: Ness Co., KS  
Drilling Completed: 08 / 29 / 2016  
Bottom Hole Coordinates:  
Ground Elevation (ft): 2399' K.B. Elevation (ft): 2404'  
Logged Interval (ft): 3700' To: 4421' Total Depth (ft): 4421'  
Formation: Viola  
Type of Drilling Fluid: Chemical - Mud-Co

Printed by MUD.LOG from WellSight Systems 1-800-447-1534 www.WellSight.com

### OPERATOR

Company: Stelbar Oil Corporation  
Address: 1625 N. Waterfront Pkwy., Suite 200  
Wichita, Kansas 67206-6602

### GEOLOGIST

Name: David J. Goldak  
Company: D. J. GOLDAK, INC.  
Address: 12427 W Ridgepoint Cir  
Wichita, Kansas 67235

### General Info

CONTRACTOR: Murfin Drilling, Rig #16

#### BIT RECORD:

No.	Size	Make	Jets	Out	Feet	Hours
1	12-1/4	Varel-ERT-RR	3-15s	303	303	6.00
2	7-7/8	HTC-GX20C	18-16-16	4421	4118	84.00

SURVEYS: 303'-0.25, 4328'-0.75

#### GENERAL DRILLING & PUMP INFORMATION:

Drilling with 35,000-36,000 lbs on bit and 75-80 RPM.  
Drilling with 8-1/2 stands of collars (6.25"x2.25"): 509.23'  
Pumping 62 S/M; 8.0 B/M; 700-800 psi at standpipe.

## Daily Status

08/22/16 - Spud at 3:45 PM; Set 8-5/8" csg @ 302'  
 08/23/16 - 303' WOC; DP @ 9:30 AM  
 08/24/16 - 2,035' Drilling  
 08/25/16 - 3,130' Drilling; Displace @ 3,340'  
 08/26/16 - 3,890' Drilling; Short trip @ 4,226'  
 08/27/16 - 4,300' Drilling; DSTs #1 & #2 @ 4,328'  
 08/28/16 - 4,328' TIH with DST #3  
 08/29/16 - 4,421' Logging

**DST #1: 4,313' - 4,328' (Cherokee "C" Sand)**  
 Misrun - Hit bridge @ 1,100'

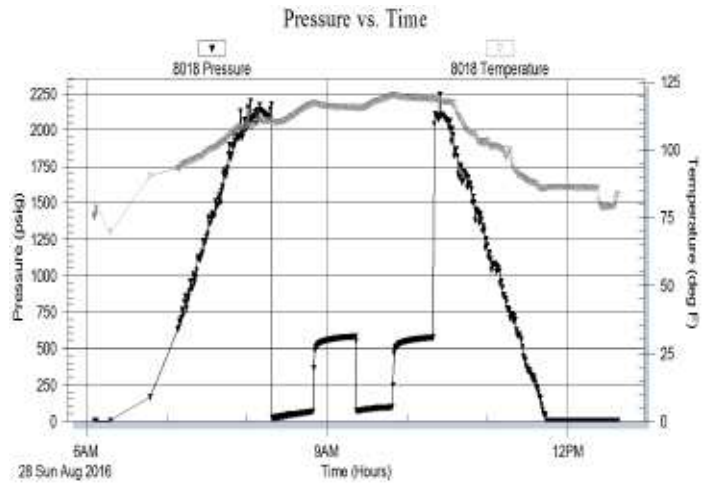
**DST #2: 4,313' - 4,328' (Cherokee "C" Sand)**  
 Misrun - Hit bridge @ 1,100'

**DST #3: 4,313' - 4,328' (Cherokee "C" Sand)**  
 30" - 30" - 30" - 30"

**IF: Weak blow building to 2-3/4 inches**  
**ISI: No blow back**  
**FF: Weak blow building to 1-1/2 inches**  
**FSI: No blow back**

**RECOVERY: 160' Total Fluid, consisting of:**  
 40' WM with SO (30% W & 70% M)  
 120' MW (90% W & 10% M)  
**Sampler: 400 ml M & 1600 ml W @ 100 psi**  
**Recovery Chlorides: 32,000 ppm**

**SIP: 581-574; FP: 24-65, 69-95; HP: 2088-2074; BHT: 119**



## ROCK TYPES

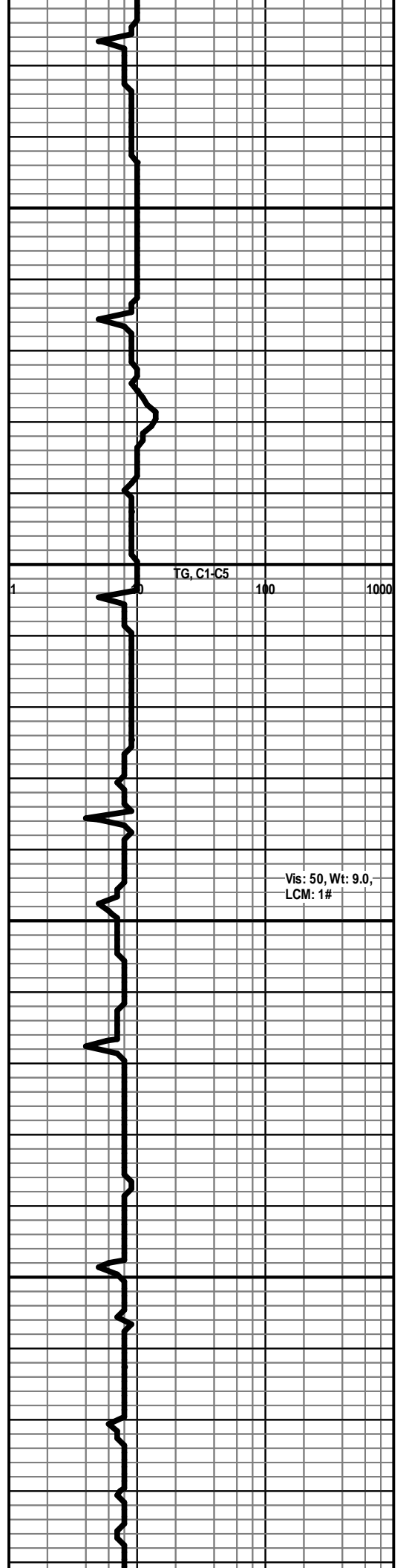
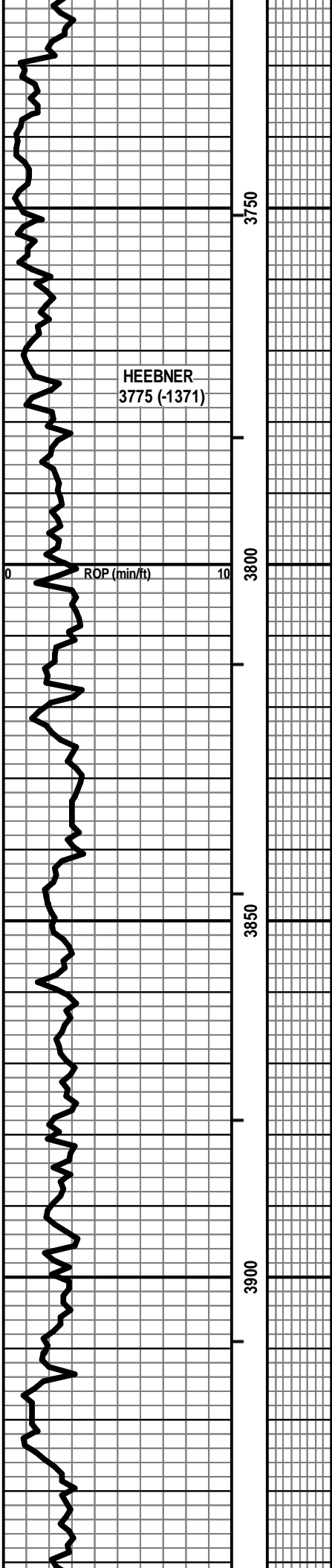
	Anhy
	Bent
	Brec
	Cht
	Clyst
	Coal
	Congl
	Dol

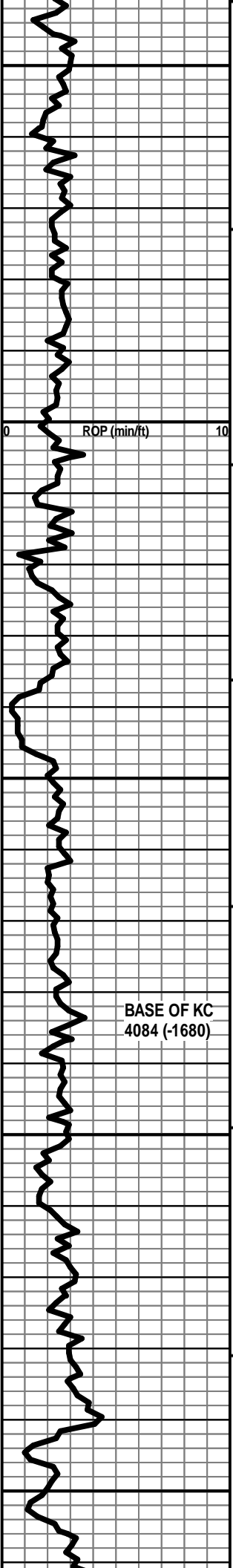
	Gyp
	Igne
	Lmst
	Meta
	Mrlst
	Salt
	Shale
	Shcol

	Shgy
	Sltst
	Ss
	Till
	Carb sh
	Dol
	Dtd
	Gry sh

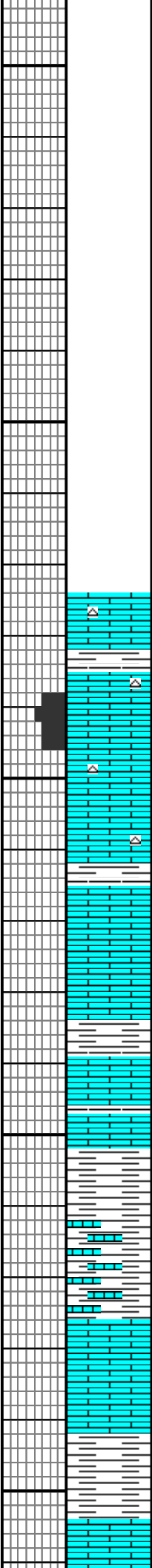
	Sandylms
	Shale
	Sltstn
	Shlyslts
	SltysH
	Lms







3950  
4000  
4050  
4100  
4150



NOTE ON SAMPLE QUALITY: EXCESSIVE AMOUNT OF SHALE (GY, GRN & RED) IN SAMPLES

LS - CRM / GY, VF / F XLN, TR FOSS, PRED DNS, NS W/ SCAT CHT - WHT / LT GY

LS - CRM / TAN, F / VF XLN, OOL, F / G OOM + VUG POR, F INTXLN POR, NS

LS - TAN / SCAT CRM, VF / F XLN, OOL IN PT, PRED DNS, NS W/ CHT - GY / WHT / TAN

LS - CRM / SCAT TAN, VF / F XLN, OOL IN PT, SL FOSS, SUBCHKYIPT, PRED DNS, NS

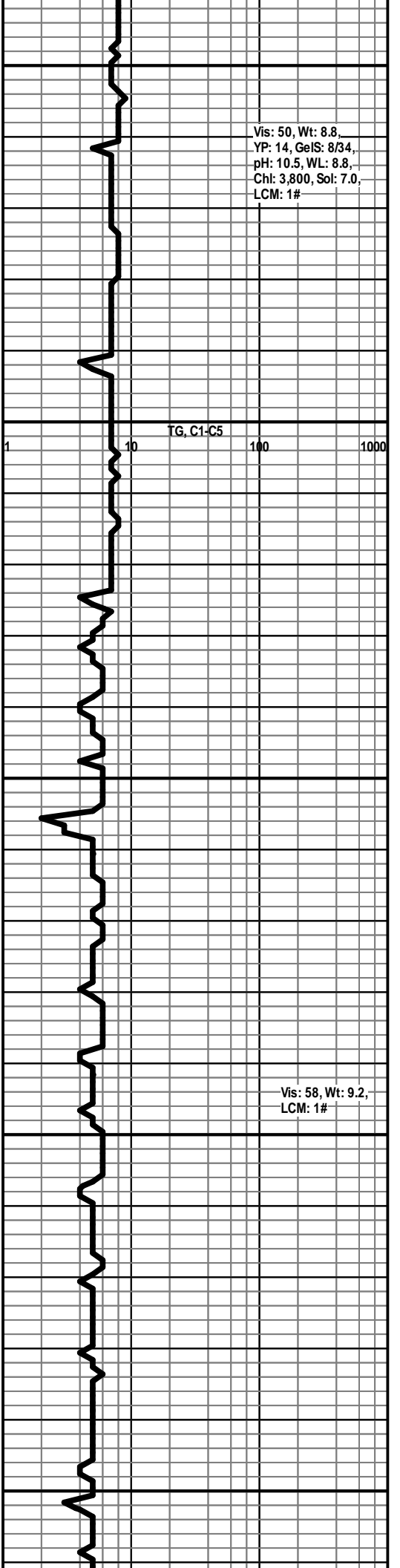
BASE OF KC 4084 (-1680)

LS - TAN / CRM, VF / F XLN, FOSS + OOL IN PT, PRED DNS, NS

SH - GY / SCAT GRN W/ LS - CRM / GY / GRNISH, MOT IN PT, VF / F XLN, DNS / ARGIL, NS

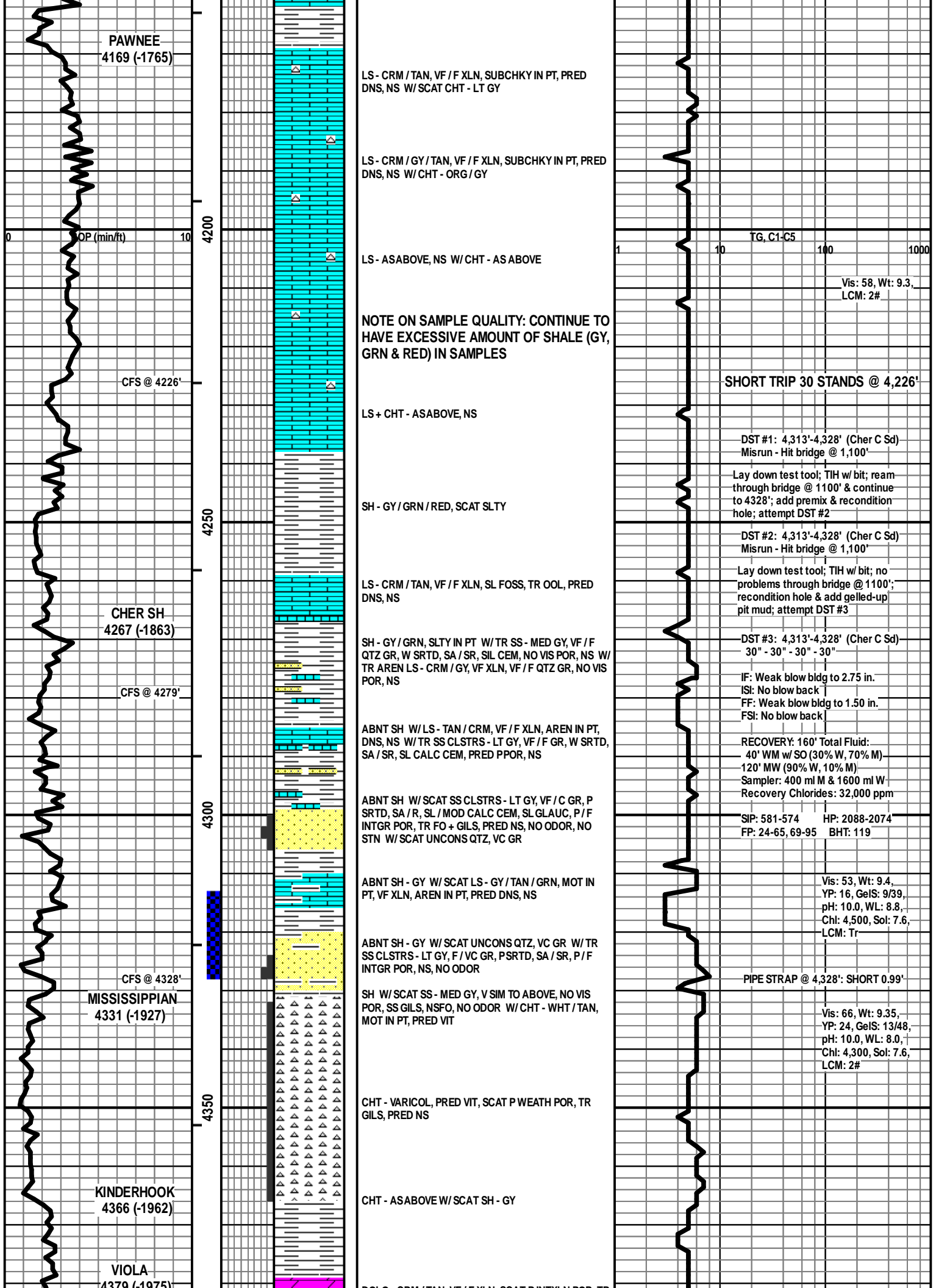
LS - TAN / CRM, VF / F XLN, FOSS IN PT, SUBCHKYIN PT, PRED DNS, NS

SH - PRED GY W/ LS - TAN / BRN, F / VF XLN, SL FOSS, PRED DNS, NS



Vis: 50, Wt: 8.8,  
YP: 14, GeIS: 8/34,  
pH: 10.5, WL: 8.8,  
Chl: 3,800, Sol: 7.0,  
LCM: 1#

Vis: 58, Wt: 9.2,  
LCM: 1#



PAWNEE  
4169 (-1765)

LS - CRM / TAN, VF / F XLN, SUBCHKY IN PT, PRED  
DNS, NS W/SCAT CHT - LT GY

LS - CRM / GY / TAN, VF / F XLN, SUBCHKY IN PT, PRED  
DNS, NS W/CHT - ORG / GY

LS - ASABOVE, NS W/CHT - AS ABOVE

NOTE ON SAMPLE QUALITY: CONTINUE TO  
HAVE EXCESSIVE AMOUNT OF SHALE (GY,  
GRN & RED) IN SAMPLES

LS + CHT - ASABOVE, NS

SH - GY / GRN / RED, SCAT SLTY

LS - CRM / TAN, VF / F XLN, SL FOSS, TR OOL, PRED  
DNS, NS

CHER SH  
4267 (-1863)

SH - GY / GRN, SLTY IN PT W/TR SS - MED GY, VF / F  
QTZ GR, W SRTD, SA / SR, SIL CEM, NO VIS POR, NS W/  
TR AREN LS - CRM / GY, VF XLN, VF / F QTZ GR, NO VIS  
POR, NS

CFS @ 4279'

ABNT SH W/LS - TAN / CRM, VF / F XLN, AREN IN PT,  
DNS, NS W/TR SS CLSTRS - LT GY, VF / F GR, W SRTD,  
SA / SR, SL CALC CEM, PRED PPOR, NS

ABNT SH W/SCAT SS CLSTRS - LT GY, VF / C GR, P  
SRTD, SA / R, SL / MOD CALC CEM, SL GLAUC, P / F  
INTGR POR, TR FO + GILS, PRED NS, NO ODOR, NO  
STN W/SCAT UNCONS QTZ, VC GR

ABNT SH - GY W/SCAT LS - GY / TAN / GRN, MOT IN  
PT, VF XLN, AREN IN PT, PRED DNS, NS

ABNT SH - GY W/SCAT UNCONS QTZ, VC GR W/TR  
SS CLSTRS - LT GY, F / VC GR, PSRTD, SA / SR, P / F  
INTGR POR, NS, NO ODOR

CFS @ 4328'

MISSISSIPPIAN  
4331 (-1927)

SH W/SCAT SS - MED GY, V SIM TO ABOVE, NO VIS  
POR, SS GILS, NSFO, NO ODOR W/CHT - WHT / TAN,  
MOT IN PT, PRED VIT

CHT - VARICOL, PRED VIT, SCAT P WEATH POR, TR  
GILS, PRED NS

KINDERHOOK  
4366 (-1962)

CHT - ASABOVE W/SCAT SH - GY

VIOLA  
4370 (-1975)

TG, C1-C5

Vis: 58, Wt: 9.3,  
LCM: 2#

SHORT TRIP 30 STANDS @ 4,226'

DST #1: 4,313'-4,328' (Cher C Sd)  
Misrun - Hit bridge @ 1,100'

Lay down test tool; TIH w bit; ream  
through bridge @ 1100' & continue  
to 4328'; add premix & recondition  
hole; attempt DST #2

DST #2: 4,313'-4,328' (Cher C Sd)  
Misrun - Hit bridge @ 1,100'

Lay down test tool; TIH w bit; no  
problems through bridge @ 1100';  
recondition hole & add gelled-up  
pit mud; attempt DST #3

DST #3: 4,313'-4,328' (Cher C Sd)  
30" - 30" - 30" - 30"

IF: Weak blow bldg to 2.75 in.  
IS: No blow back  
FF: Weak blow bldg to 1.50 in.  
FSI: No blow back

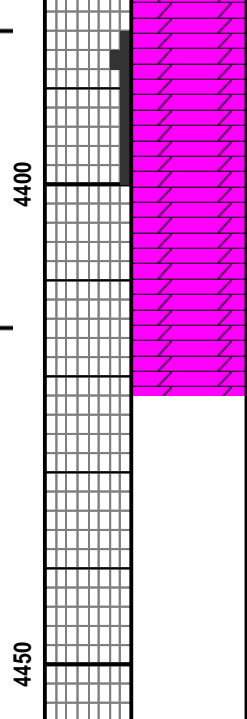
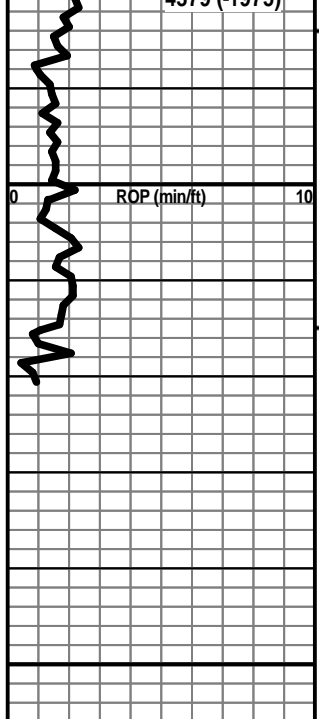
RECOVERY: 160' Total Fluid:  
40' WM w/ SO (30% W, 70% M)  
120' MW (90% W, 10% M)  
Sampler: 400 ml M & 1600 ml W  
Recovery Chlorides: 32,000 ppm

SIP: 581-574 HP: 2088-2074  
FP: 24-65, 69-95 BHT: 119

Vis: 53, Wt: 9.4,  
YP: 16, GeIS: 9/39,  
pH: 10.0, WL: 8.8,  
Chl: 4,500, Sol: 7.6,  
LCM: Tr

PIPE STRAP @ 4,328': SHORT 0.99'

Vis: 66, Wt: 9.35,  
YP: 24, GeIS: 13/48,  
pH: 10.0, WL: 8.0,  
Chl: 4,300, Sol: 7.6,  
LCM: 2#

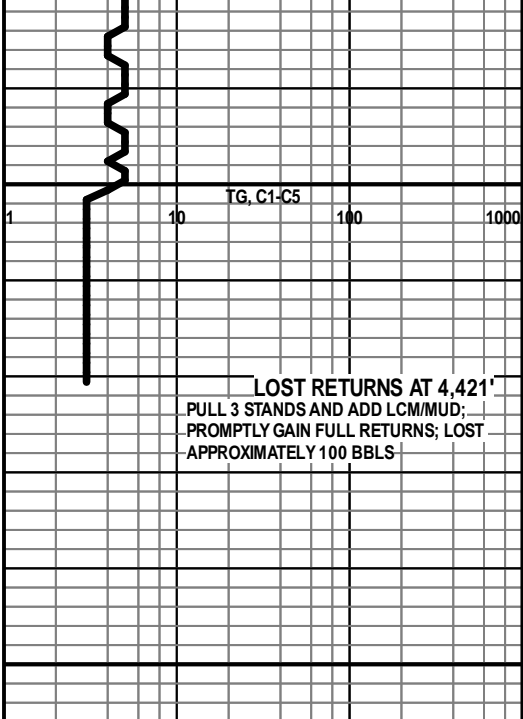


DOLO - CRM / TAN, VF / F XLN, SCAT P INTXLN POR, TR  
 P VUG POR, PRED DNS, NS

DOLO - CRM / TAN, PRED VF / F XLN, SCAT M XLN, F  
 INTXLN + VUG POR IN PT, NS

LOTHOLOGY INFERRED DUE TO LOST RETURNS

TOTAL DEPTH 4421 (-2017)



LOST RETURNS AT 4,421'  
 PULL 3 STANDS AND ADD LCM/MUD;  
 PROMPTLY GAIN FULL RETURNS; LOST  
 APPROXIMATELY 100 BBLs