

GEOLOGIC REPORT

DAVID J. GOLDAK

WICHITA, KANSAS
Scale 1:240 (5"=100') Imperial
Measured Depth Log

Well Name: Miller Trust #1-25
Location: Section 25 - T16S - R32W
License Number: API: 15-171-21176
Spud Date: 07 / 29 / 2016
Surface Coordinates: 1737' FSL and 2289' FWL
NW - SE - NE - SW
Region: Scott Co., KS
Drilling Completed: 08 / 04 / 2016
Bottom Hole Coordinates:
Ground Elevation (ft): 2966' K.B. Elevation (ft): 2971'
Logged Interval (ft): 3750' To: 4735' Total Depth (ft): 4735'
Formation: Mississippian - St Louis
Type of Drilling Fluid: Chemical - Mud-Co

Printed by MUD.LOG from WellSight Systems 1-800-447-1534 www.WellSight.com

OPERATOR

Company: Stelbar Oil Corporation
Address: 1625 N. Waterfront Pkwy., Suite 200
Wichita, Kansas 67206-6602

GEOLOGIST

Name: David J. Goldak
Company: D. J. GOLDAK, INC.
Address: 12427 W Ridgepoint Cir
Wichita, Kansas 67235

General Info

CONTRACTOR: WW Drilling, Rig #10

BIT RECORD:

No.	Size	Make	Jets	Out	Feet	Hours
1	12-1/4	Smith-?	15-15-15	300	300	2.25
2	7-7/8	Smith-F27	15-15-15	4735	4435	93.25

SURVEYS: 300'-1.00, 4030'-1.75, 4735'-2.00

GENERAL DRILLING & PUMP INFORMATION:

Drilling with 8 stands of collars (6.25"x2.25"): 486.78'
Drilling with 38,000 lbs on bit and 80-85 RPM.
Pumping 60 S/M; 7.74 B/M; 850-900 psi at the standpipe.

Daily Status

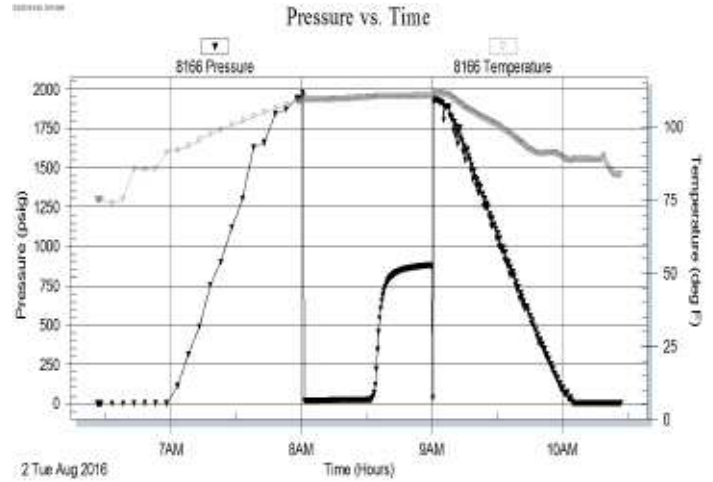
07/29/16 - Spud at 1:45 PM; Set 8-5/8" csg at 300'
 07/30/16 - 717' Drilling
 07/31/16 - 2,970' Drilling; Displace mud @ 3,383'
 08/01/16 - 3,800' Drilling; DST #1 @ 4,030' (Misrun)
 08/02/16 - 4,030' TIH with DST #2
 08/03/16 - 4,365' Drilling
 08/04/16 - 4,729' Drilling; RTD @ 4,735'; Log in PM

DST #2: 4,008' - 4,030' (LKC "B")
 30" - 30" - 0" - 0"

IF: Surface blow, died in 17 minutes
ISI: No blow back
FF: N/A
FSI: N/A

RECOVERY: 10' Total Fluid, consisting of:
 10' OSM (100% M)
Sampler: 2000 ml Mud @ 10 psi

SIP: 878; FP: 15-24; HP: 1980-1937; BHT: 110



ROCK TYPES

	Anhy
	Bent
	Brec
	Cht
	Clyst
	Coal
	Congl
	Dol

	Gyp
	Igne
	Lmst
	Meta
	Mrlst
	Salt
	Shale
	Shcol

	Shgy
	Sltst
	Ss
	Till
	Carb sh
	Dol
	Dtd
	Gry sh

	Sandylms
	Shale
	Sltstn
	Shlyslts
	Sltyslts
	Lms

ACCESSORIES

MINERAL

- Anhy
- Arggrn
- Arg
- Bent
- Bit
- Breclrag
- Calc
- Carb
- Chtdk
- Chtlt
- Dol
- Feldspar
- Ferrpel
- Ferr
- Glau
- Gyp
- Hvymin
- Kaol
- Marl
- Minxl
- Nodule
- Phos
- Pyr

- Salt
- Sandy
- Silt
- Sil
- Sulphur
- Tuff
- Chlorite
- Dol
- Sand
- Sltly

FOSSIL

- Algae
- Amph
- Belm
- Bioclst
- Brach
- Bryozoa
- Cephal
- Coral
- Crin
- Echin
- Fish
- Foram

- Fossil
- Gastro
- Oolite
- Ostra
- Pelec
- Pellet
- Pisolite
- Plant
- Strom
- Fuss
- Oomold

STRINGER

- Anhy
- Arg
- Bent
- Coal
- Dol
- Gyp
- Ls
- Mrst
- Sltstrg
- Ssstrg
- Carbsh

- Clystn
- Dol
- Grysh
- Gryslt
- Lms
- Sandylms
- Sh
- Sltstn

TEXTURE

- Boundst
- Chalky
- Cryxln
- Earthy
- Finexln
- Grainst
- Lithogr
- Microxln
- Mudst
- Packst
- Wackest

OTHER SYMBOLS

POROSITY TYPE

- Earthy
- Fenest
- Fracture
- Inter
- Moldic
- Organic
- Pinpoint
- Vuggy

SORTING

- Well
- Moderate
- Poor

ROUNDING

- Rounded
- Subrnd
- Subang
- Angular

OIL SHOWS

- Even
- Spotted
- Ques
- Dead
- Gas show

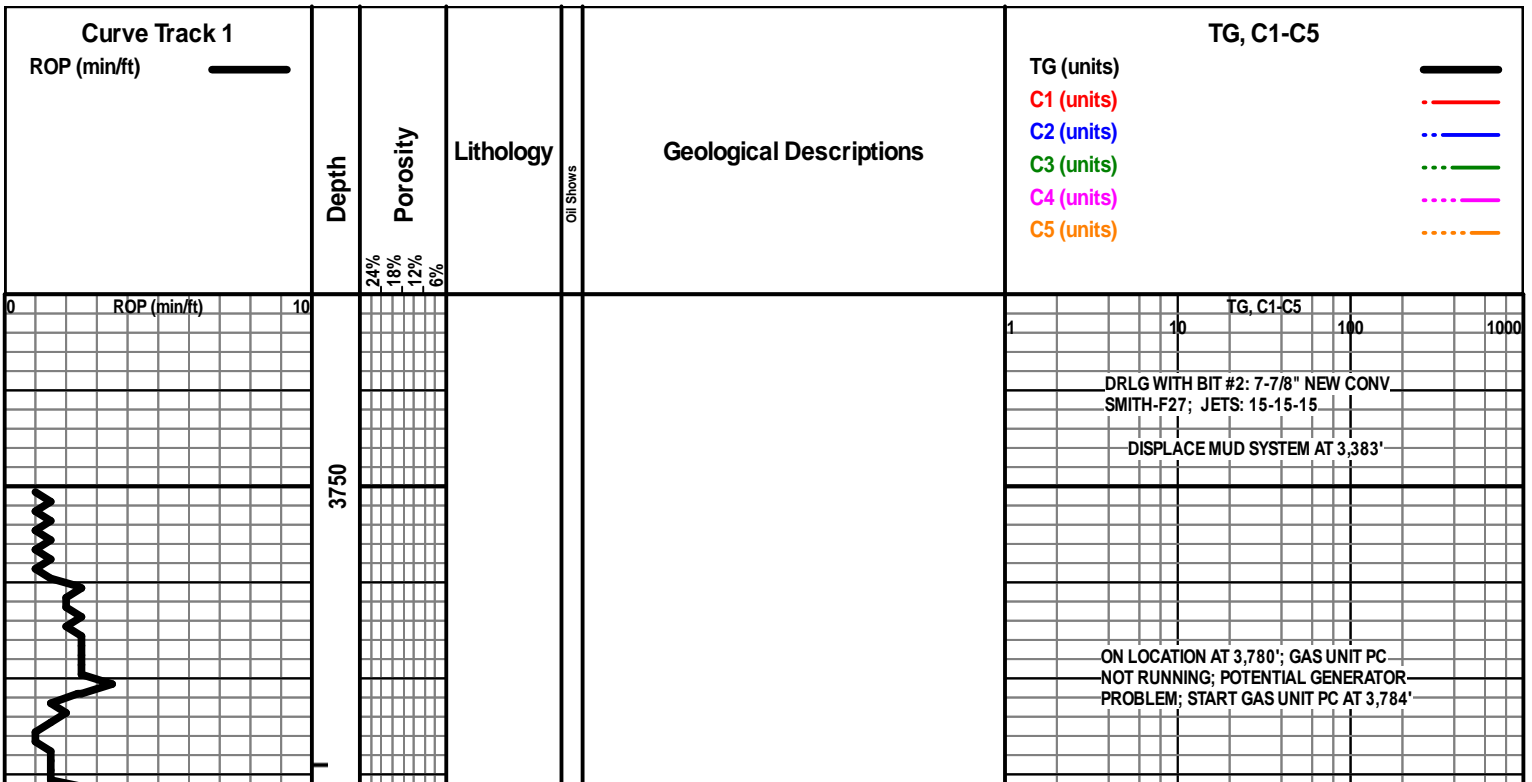
INTERVALS

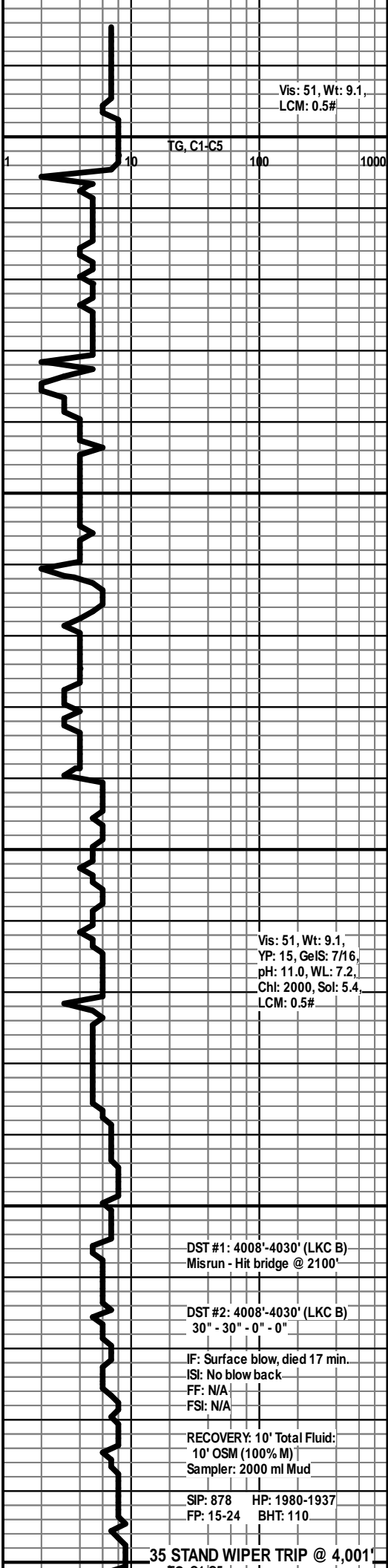
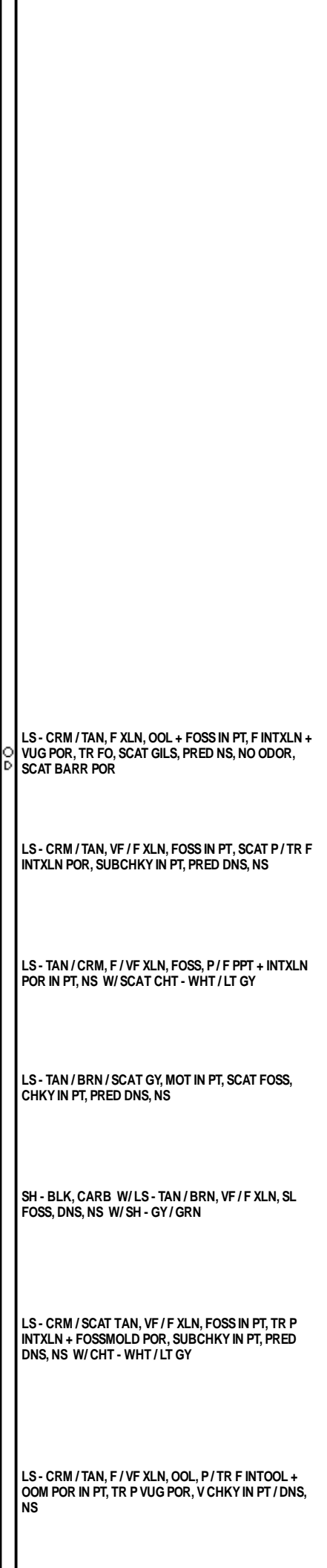
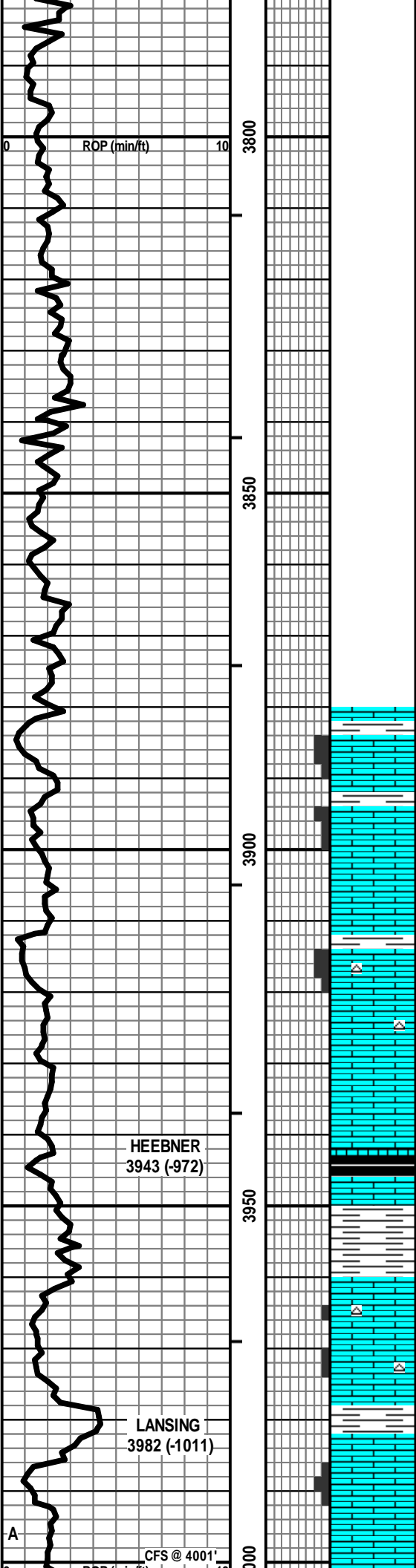
- Core
- Dst

- Dst_1_t
- Dst_1_b
- Dst

EVENTS

- Rft
- Sidewall
- Conn





Vis: 51, Wt: 9.1,
LCM: 0.5#

TG, C1-C5 100 1000

LS - CRM / TAN, F XLN, OOL + FOSS IN PT, F INTXN + VUG POR, TR FO, SCAT GILS, PRED NS, NO ODOR, SCAT BARR POR

LS - CRM / TAN, VF / F XLN, FOSS IN PT, SCAT P / TR F INTXN POR, SUBCHKY IN PT, PRED DNS, NS

LS - TAN / CRM, F / VF XLN, FOSS, P / F PPT + INTXN POR IN PT, NS W/ SCAT CHT - WHT / LT GY

LS - TAN / BRN / SCAT GY, MOT IN PT, SCAT FOSS, CHKY IN PT, PRED DNS, NS

SH - BLK, CARB W/ LS - TAN / BRN, VF / F XLN, SL FOSS, DNS, NS W/ SH - GY / GRN

LS - CRM / SCAT TAN, VF / F XLN, FOSS IN PT, TR P INTXN + FOSSMOLD POR, SUBCHKY IN PT, PRED DNS, NS W/ CHT - WHT / LT GY

LS - CRM / TAN, F / VF XLN, OOL, P / TR F INTOOL + OOM POR IN PT, TR P VUG POR, V CHKY IN PT / DNS, NS

Vis: 51, Wt: 9.1,
YP: 15, GeIS: 7/16,
pH: 11.0, WL: 7.2,
Ch: 2000, Sol: 5.4,
LCM: 0.5#

HEEBNER
3943 (-972)

LANSING
3982 (-1011)

DST #1: 4008'-4030' (LKC B)
Misrun - Hit bridge @ 2100'

DST #2: 4008'-4030' (LKC B)
30" - 30" - 0" - 0"

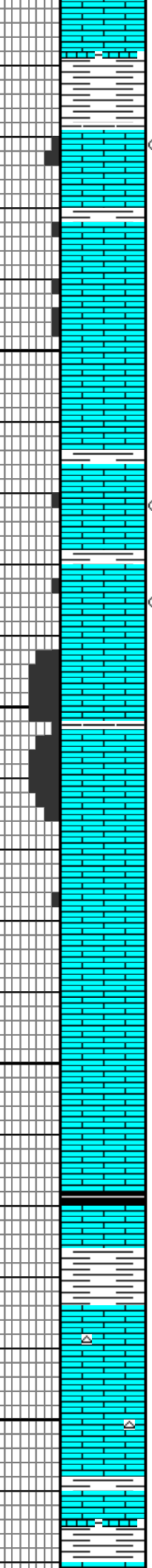
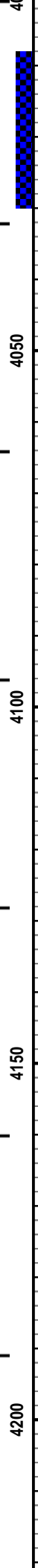
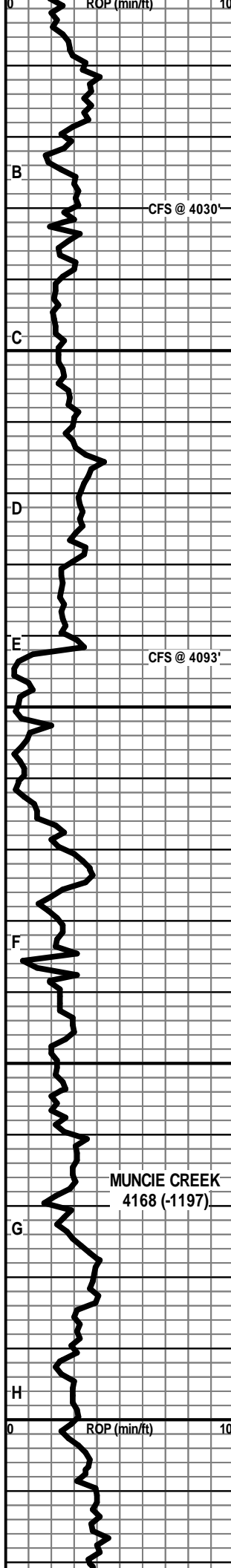
IF: Surface blow, died 17 min.
ISI: No blow back
FF: N/A
FSI: N/A

RECOVERY: 10' Total Fluid:
10' OSM (100% M)
Sampler: 2000 ml Mud

SIP: 878 HP: 1980-1937
FP: 15-24 BHT: 110

CFS @ 4001'

35 STAND WIPER TRIP @ 4,001'



LS - CRM, VF / F XLN, SL OOL + FOSS, PRED DNS / SCAT CHKY, NS W/ SH - GY

LS - CRM / TAN, F XLN, OOL, SL FOSS, P / F INTOOL / INTXLN POR, SCAT VUG POR, SL / F SFO + GB, F ODOR, SAT / SPTY STN, G FLUOR + CUT, SCAT P SFO + BARR POR

LS - CRM / LT GY, F / VF XLN, SCAT M REXLN CALC, SCAT P VUG + PPT POR, CHKY IN PT, PRED DNS, NS

LS - CRM / TAN / SCAT GY, F / VF XLN, SL OOL, SCAT CHKY, PRED DNS, NS

LS - CRM / TAN, F / M XLN, OOL, TR P INTXLN + PPT POR, TR FO, V FT ODOR, TR SPTY STN, G FLUOR, F / G CUT, SUBCHKY IN PT, PRED DNS

LS - CRM / TAN, VF / F XLN, SCAT OOL, TR P INTXLN + VUG POR, TR FO, V FT ODOR, TR SPTY STN, F / G FLUOR + CUT, SUBCHKY IN PT, PRED DNS W/ LS - TAN / CRM, F XLN, OOL, G OOM POR, NS

LS - CRM / TAN, F XLN, OOL, G OOM POR, NS

LS - TAN / GY / SCAT CRM, F / VF XLN, OOL IN PT, TR P INTXLN POR, PRED DNS, NS

LS - TAN / CRM / SCAT GY, VF / F XLN, OOL IN PT, CHKY IN PT, PRED DNS, NS

LS - TAN / CRM / SCAT GY, VF / F XLN, SCAT OOL, SCAT CHKY IN, PRED DNS, NS

LS - TAN / BRN, F / VF XLN, SL OOL, PRED DNS, NS W/ SH - GY / BLK

LS - CRM / TAN, VF / F XLN, OOL IN PT, CHKY IN PT, PRED DNS, NS W/ CHT - WHT / LT GY

LS - ASABOVE, NS W/ LS - GY / BRN, F XLN, SL FOSS, PRED DNS, NS W/ SCAT SH - GY

CFS @ 4030'

CFS @ 4093'

MUNCIE CREEK
4168 (-1197)

PIPE STRAP @ 4030': SHORT 0.08'

VERY HEAVY RAIN; 6-24 IN. WATER ON PITS; BREAKS WET; SHUT DOWN AT 3138' TO JET WATER OFF PITS AND DRY BRAKES

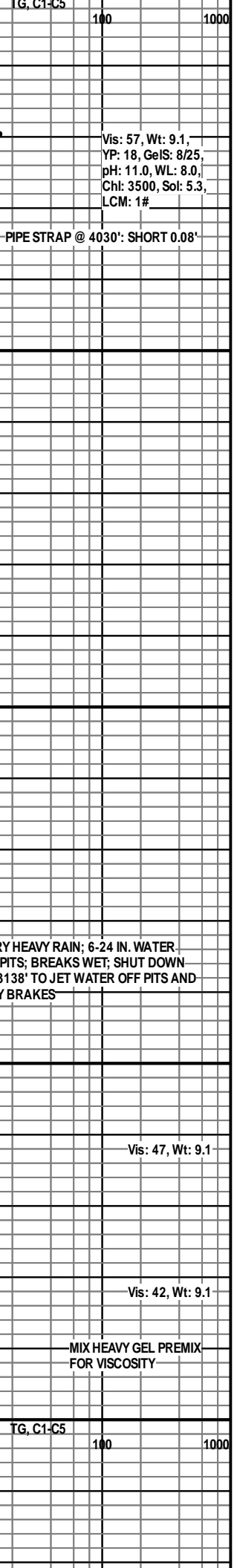
MIX HEAVY GEL PREMIX FOR VISCOSITY

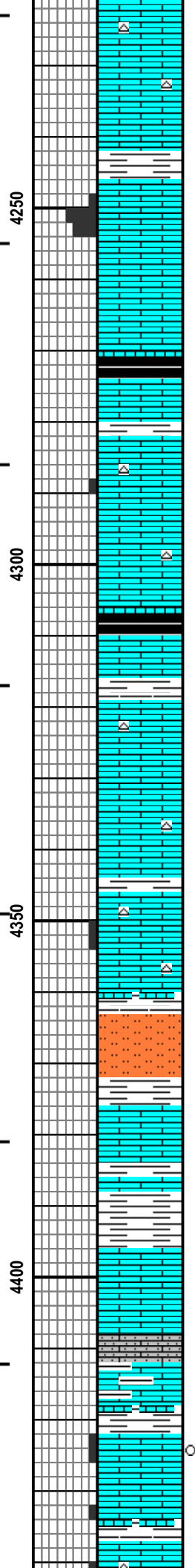
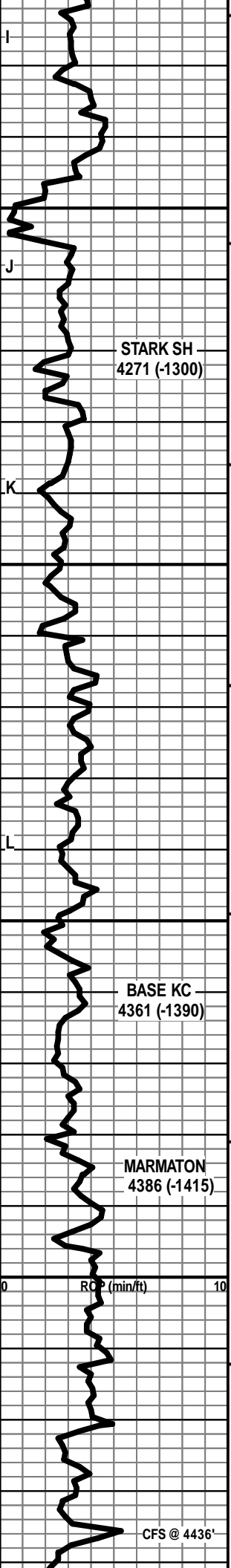
Vis: 57, Wt: 9.1,
YP: 18, GeIS: 8/25,
pH: 11.0, WL: 8.0,
Chl: 3500, Sol: 5.3,
LCM: 1#

Vis: 47, Wt: 9.1

Vis: 42, Wt: 9.1

TG, C1-C5





LS - TAN / CRM, VF / F XLN, FOSS, SUBCHKY IN PT, PRED DNS, NS W/ SCAT CHT - WHT / LT GY

LS - TAN / BRN, VF / F XLN, SL FOSS, PRED DNS, NS W/ SCAT SH - GY / GRN, CALC IN PT

LS - CRM / GY / TAN, VF / F XLN, OOL, G OOM POR, SOME CHKY / DNS, NS

LS - CRM / TAN / GY, VF / F XLN, OOL IN PT, CHKY IN PT, PRED DNS, NS

SH - BLK, CARB W/ LS - TAN / BRN, F XLN, PRED DNS, NS

LS - CRM / TAN, VF / F XLN, SCAT OOL + FOSS, TR P INTXLN + PPT POR, PRED SUBCHKY / DNS, NS W/ CHT - WHT / LT GY

SH - BLK, CARB W/ LS - TAN / BRN, F XLN, SCAT REXLN CALC, SL FOSS, PRED DNS, NS

LS - TAN / GY, MOT IN PT, F XLN, OOL IN PT, PRED DNS, NS W/ CHT - GY / TAN

LS - ASABOVE

LS - CRM / TAN, VF / F XLN, OOL IN PT, TR P INTXLN + VUG POR, CHKY IN PT / DNS, NS W/ CHT - LT GY / WHT

SH + SLTST - GY / GRN

LS - TAN / BRN / SCAT CRM, F XLN, SCAT M REXLN CALC, SL OOL + FOSS, PRED DNS, TR SPTY ASPH, PRED NS

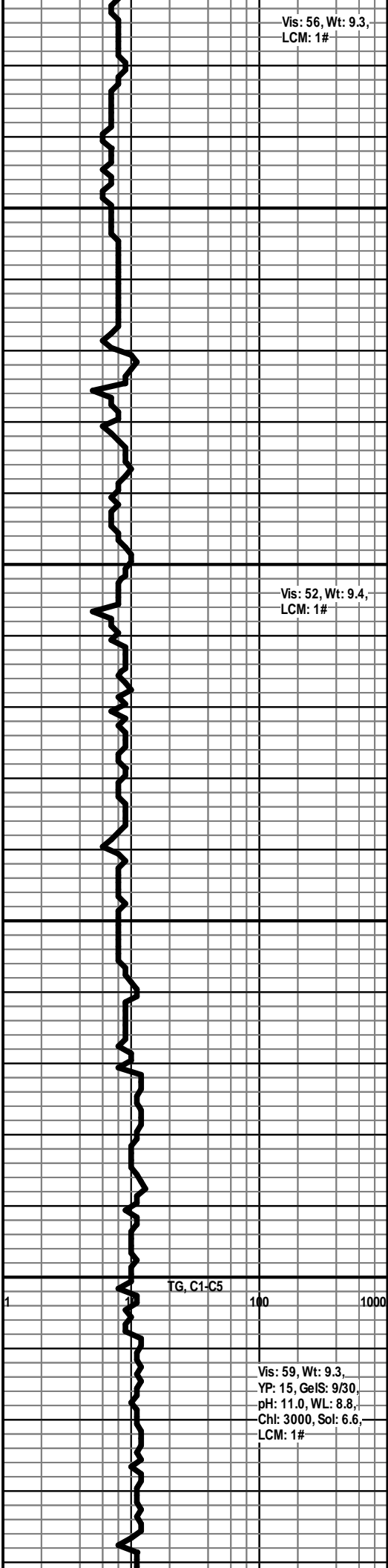
SH - GY / SCAT GRN W/ LS - TAN / CRM, VF / F XLN, SCAT OOL, PRED DNS, NS

LS - TAN / GY, MOT, F XLN, AREN, VF QTZ GR, PRED DNS, NS W/ SH - GY / GRN

AREN LS + MOD AMT SH - AS ABOVE W/ LS - TAN / SCAT BRN, F XLN, SL FOSS + OOL, PRED DNS, NS

LS - CRM / TAN, VF / F XLN, SCAT M REXLN CALC, OOL IN PT, SL FOSS, SCAT P INTXLN POR, TR P OOM POR, VSSFO + ASPH, NO ODOR, TR SPTY STN, P/ NO FLU, F / G CUT

LS - ASABOVE, SCAT CRYPTO XLN, NS



Vis: 56, Wt: 9.3, LCM: 1#

Vis: 52, Wt: 9.4, LCM: 1#

TG, C1-C5 100 1000

Vis: 59, Wt: 9.3, YP: 15, GeIS: 9/30, pH: 11.0, WL: 8.8, Cht: 3000, Sol: 6.6, LCM: 1#

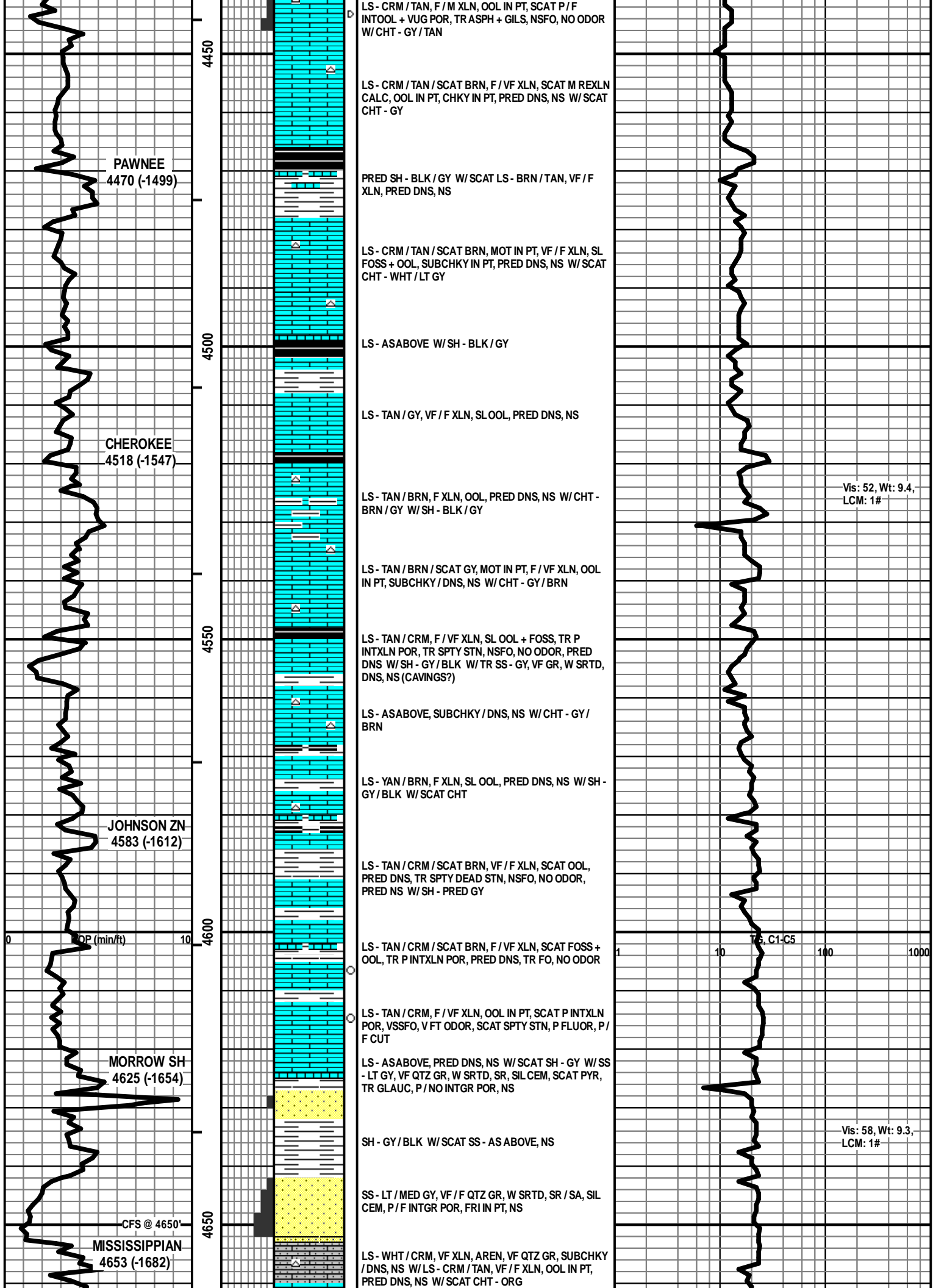
STARK SH
4271 (-1300)

BASE KC
4361 (-1390)

MARMATON
4386 (-1415)

CFS @ 4436'

RCP (min/ft)



PAWNEE
4470 (-1499)

CHEROKEE
4518 (-1547)

JOHNSON ZN
4583 (-1612)

MORROW SH
4625 (-1654)

MISSISSIPPIAN
4653 (-1682)

POP (min/ft)

CFS @ 4650'

LS - CRM / TAN, F / M XLN, OOL IN PT, SCAT P / F
INTOOL + VUG POR, TR ASPH + GILS, NSFO, NO ODOR
W / CHT - GY / TAN

LS - CRM / TAN / SCAT BRN, F / VF XLN, SCAT M REXLN
CALC, OOL IN PT, CHKY IN PT, PRED DNS, NS W / SCAT
CHT - GY

PRED SH - BLK / GY W / SCAT LS - BRN / TAN, VF / F
XLN, PRED DNS, NS

LS - CRM / TAN / SCAT BRN, MOT IN PT, VF / F XLN, SL
FOSS + OOL, SUBCHKY IN PT, PRED DNS, NS W / SCAT
CHT - WHT / LT GY

LS - ASABOVE W / SH - BLK / GY

LS - TAN / GY, VF / F XLN, SL OOL, PRED DNS, NS

LS - TAN / BRN, F XLN, OOL, PRED DNS, NS W / CHT -
BRN / GY W / SH - BLK / GY

LS - TAN / BRN / SCAT GY, MOT IN PT, F / VF XLN, OOL
IN PT, SUBCHKY / DNS, NS W / CHT - GY / BRN

LS - TAN / CRM, F / VF XLN, SL OOL + FOSS, TR P
INTXLN POR, TR SPTY STN, NSFO, NO ODOR, PRED
DNS W / SH - GY / BLK W / TR SS - GY, VF GR, W SRTD,
DNS, NS (CAVINGS?)

LS - ASABOVE, SUBCHKY / DNS, NS W / CHT - GY /
BRN

LS - TAN / BRN, F XLN, SL OOL, PRED DNS, NS W / SH -
GY / BLK W / SCAT CHT

LS - TAN / CRM / SCAT BRN, VF / F XLN, SCAT OOL,
PRED DNS, TR SPTY DEAD STN, NSFO, NO ODOR,
PRED NS W / SH - PRED GY

LS - TAN / CRM / SCAT BRN, F / VF XLN, SCAT FOSS +
OOL, TR P INTOOL POR, PRED DNS, TR FO, NO ODOR

LS - TAN / CRM, F / VF XLN, OOL IN PT, SCAT P INTOOL
POR, VSSFO, V FT ODOR, SCAT SPTY STN, P FLUOR, P /
F CUT

LS - ASABOVE, PRED DNS, NS W / SCAT SH - GY W / SS
- LT GY, VF QTZ GR, W SRTD, SR, SIL CEM, SCAT PYR,
TR GLAUC, P / NO INTGR POR, NS

SH - GY / BLK W / SCAT SS - AS ABOVE, NS

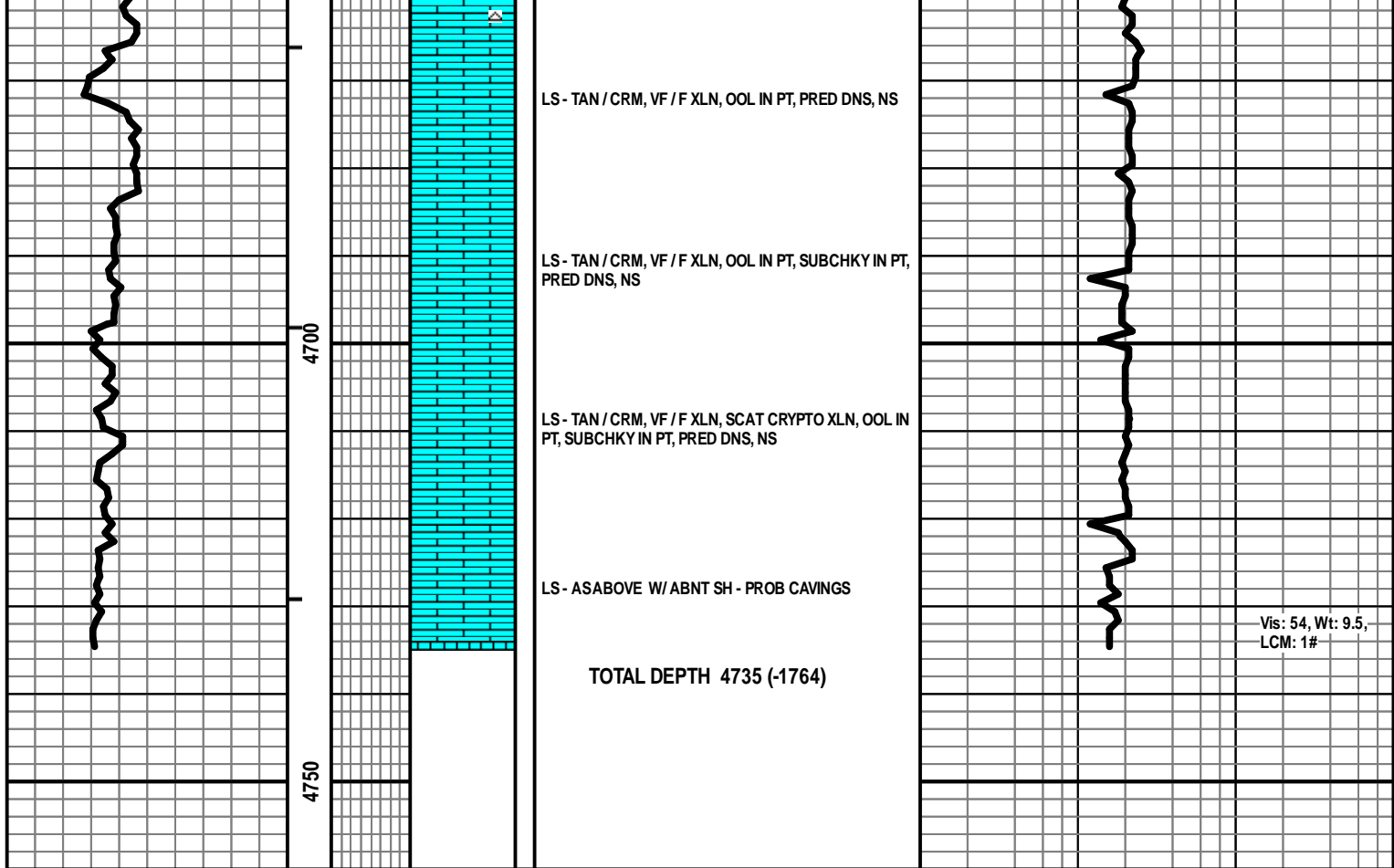
SS - LT / MED GY, VF / F QTZ GR, W SRTD, SR / SA, SIL
CEM, P / F INTOOL POR, FRI IN PT, NS

LS - WHT / CRM, VF XLN, AREN, VF QTZ GR, SUBCHKY
/ DNS, NS W / LS - CRM / TAN, VF / F XLN, OOL IN PT,
PRED DNS, NS W / SCAT CHT - ORG

Vis: 52, Wt: 9.4,
LCM: 1#

Vis: 58, Wt: 9.3,
LCM: 1#

1 10 100 1000
C1-C5



LS - TAN / CRM, VF / F XLN, OOL IN PT, PRED DNS, NS

LS - TAN / CRM, VF / F XLN, OOL IN PT, SUBCHKY IN PT, PRED DNS, NS

LS - TAN / CRM, VF / F XLN, SCAT CRYPTO XLN, OOL IN PT, SUBCHKY IN PT, PRED DNS, NS

LS - ASABOVE W/ ABNT SH - PROB CAVINGS

TOTAL DEPTH 4735 (-1764)

Vis: 54, Wt: 9.5,
LCM: 1#