



**TRILOBITE TESTING, INC**

# DRILL STEM TEST REPORT

O'Brien Resources LLC  
 PO Box 6149  
 Shreveport, LA 71136+6149  
 ATTN: Wyatt Urban

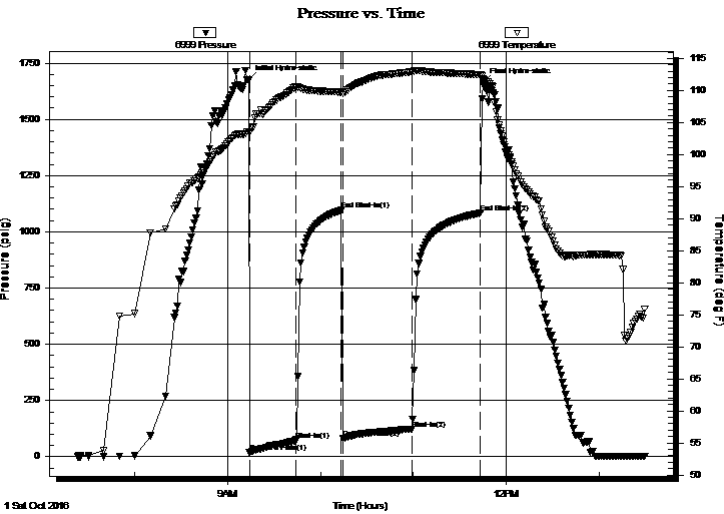
**4/19S/17W/Rush**  
**Jecha 4 #2**  
 Job Ticket: 65125 **DST#: 1**  
 Test Start: 2016.10.01 @ 07:23:00

## GENERAL INFORMATION:

Formation: **Lansing zones A-B**  
 Deviated: No Whipstock: ft (KB)  
 Time Tool Opened: 09:14:00  
 Time Test Ended: 13:29:30  
 Interval: **3483.00 ft (KB) To 3510.00 ft (KB) (TVD)**  
 Total Depth: 3510.00 ft (KB) (TVD)  
 Hole Diameter: 7.80 inches Hole Condition: Fair  
 Test Type: Conventional Bottom Hole (Initial)  
 Tester: Ken Swinney  
 Unit No: 72 Great Bend/56  
 Reference Elevations: 2087.00 ft (KB)  
 2074.00 ft (CF)  
 KB to GR/CF: 13.00 ft

**Serial #: 6999 Inside**  
 Press@RunDepth: 123.75 psig @ 3506.00 ft (KB) Capacity: 8000.00 psig  
 Start Date: 2016.10.01 End Date: 2016.10.01 Last Calib.: 2016.10.01  
 Start Time: 07:23:05 End Time: 13:29:29 Time On Btm: 2016.10.01 @ 09:13:30  
 Time Off Btm: 2016.10.01 @ 11:45:00

TEST COMMENT: I.F. 30 minutes/Blow built to 5 inches  
 I.S.I. 30 minutes/No blow back  
 F.F. 45 minutes/Blow built to 7 inches  
 F.S.I. 45 minutes/No blow back



## PRESSURE SUMMARY

Time (Min.)	Pressure (psig)	Temp (deg F)	Annotation
0	1674.69	103.60	Initial Hydro-static
1	18.25	103.39	Open To Flow (1)
31	71.38	110.59	Shut-In(1)
60	1095.80	109.74	End Shut-In(1)
61	81.52	109.60	Open To Flow (2)
106	123.75	112.93	Shut-In(2)
150	1083.47	112.46	End Shut-In(2)
152	1661.89	111.83	Final Hydro-static

## Recovery

Length (ft)	Description	Volume (bbl)
217.00	Muddy Water/ Mud 10% Water 90%	1.39

## Gas Rates

	Choke (inches)	Pressure (psig)	Gas Rate (Mcf/d)



**TRILOBITE TESTING, INC**

# DRILL STEM TEST REPORT

O'Brien Resources LLC  
 PO Box 6149  
 Shreveport, LA 71136+6149  
 ATTN: Wyatt Urban

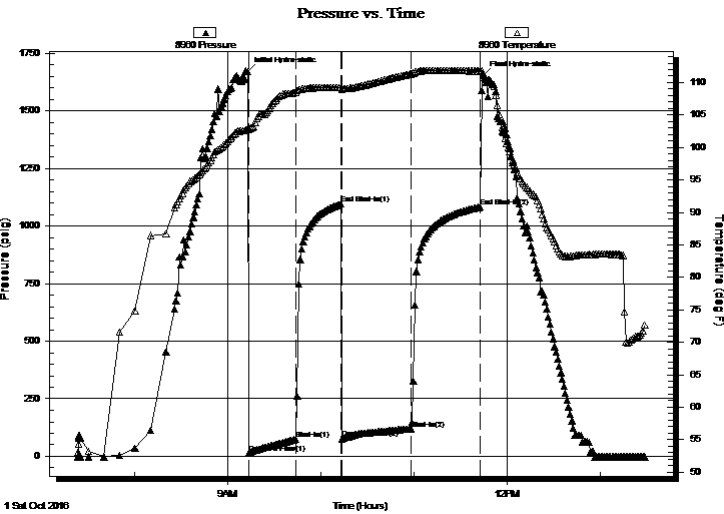
**4/19S/17W/Rush**  
**Jecha 4 #2**  
 Job Ticket: 65125 **DST#: 1**  
 Test Start: 2016.10.01 @ 07:23:00

## GENERAL INFORMATION:

Formation: **Lansing zones A-B**  
 Deviated: No Whipstock: ft (KB)  
 Time Tool Opened: 09:14:00  
 Time Test Ended: 13:29:30  
 Interval: **3483.00 ft (KB) To 3510.00 ft (KB) (TVD)**  
 Total Depth: 3510.00 ft (KB) (TVD)  
 Hole Diameter: 7.80 inches Hole Condition: Fair  
 Test Type: Conventional Bottom Hole (Initial)  
 Tester: Ken Swinney  
 Unit No: 72 Great Bend/56  
 Reference Elevations: 2087.00 ft (KB)  
 2074.00 ft (CF)  
 KB to GR/CF: 13.00 ft

**Serial #: 8960 Outside**  
 Press@RunDepth: 1082.63 psig @ 3507.00 ft (KB) Capacity: 8000.00 psig  
 Start Date: 2016.10.01 End Date: 2016.10.01 Last Calib.: 2016.10.01  
 Start Time: 07:23:05 End Time: 13:28:29 Time On Btm: 2016.10.01 @ 09:12:30  
 Time Off Btm: 2016.10.01 @ 11:44:30

TEST COMMENT: I.F. 30 minutes/Blow built to 5 inches  
 I.S.I. 30 minutes/No blow back  
 F.F. 45 minutes/Blow built to 7 inches  
 F.S.I. 45 minutes/No blow back



## PRESSURE SUMMARY

Time (Min.)	Pressure (psig)	Temp (deg F)	Annotation
0	1669.88	102.94	Initial Hydro-static
1	14.34	102.77	Open To Flow (1)
31	72.89	108.53	Shut-In(1)
60	1095.16	109.24	End Shut-In(1)
61	76.79	108.96	Open To Flow (2)
106	119.88	111.33	Shut-In(2)
150	1082.63	111.75	End Shut-In(2)
152	1653.77	111.24	Final Hydro-static

## Recovery

Length (ft)	Description	Volume (bbl)
217.00	Muddy Water/ Mud 10% Water 90%	1.39

## Gas Rates

	Choke (inches)	Pressure (psig)	Gas Rate (Mcf/d)



**TRILOBITE  
TESTING, INC**

# DRILL STEM TEST REPORT

## FLUID SUMMARY

O'Brien Resources LLC

**4/19S/17W/Rush**

PO Box 6149  
Shreveport, LA 71136+6149

**Jecha 4 #2**

Job Ticket: 65125

**DST#: 1**

ATTN: Wyatt Urban

Test Start: 2016.10.01 @ 07:23:00

### Mud and Cushion Information

Mud Type: Gel Chem

Cushion Type:

Oil API:

deg API

Mud Weight: 9.00 lb/gal

Cushion Length:

ft

Water Salinity:

47000 ppm

Viscosity: 46.00 sec/qt

Cushion Volume:

bbbl

Water Loss: 7.99 in<sup>3</sup>

Gas Cushion Type:

Resistivity: ohm.m

Gas Cushion Pressure:

psig

Salinity: 2400.00 ppm

Filter Cake: 1.00 inches

### Recovery Information

Recovery Table

Length ft	Description	Volume bbl
217.00	Muddy Water/ Mud 10% Water 90%	1.392

Total Length: 217.00 ft      Total Volume: 1.392 bbl

Num Fluid Samples: 0

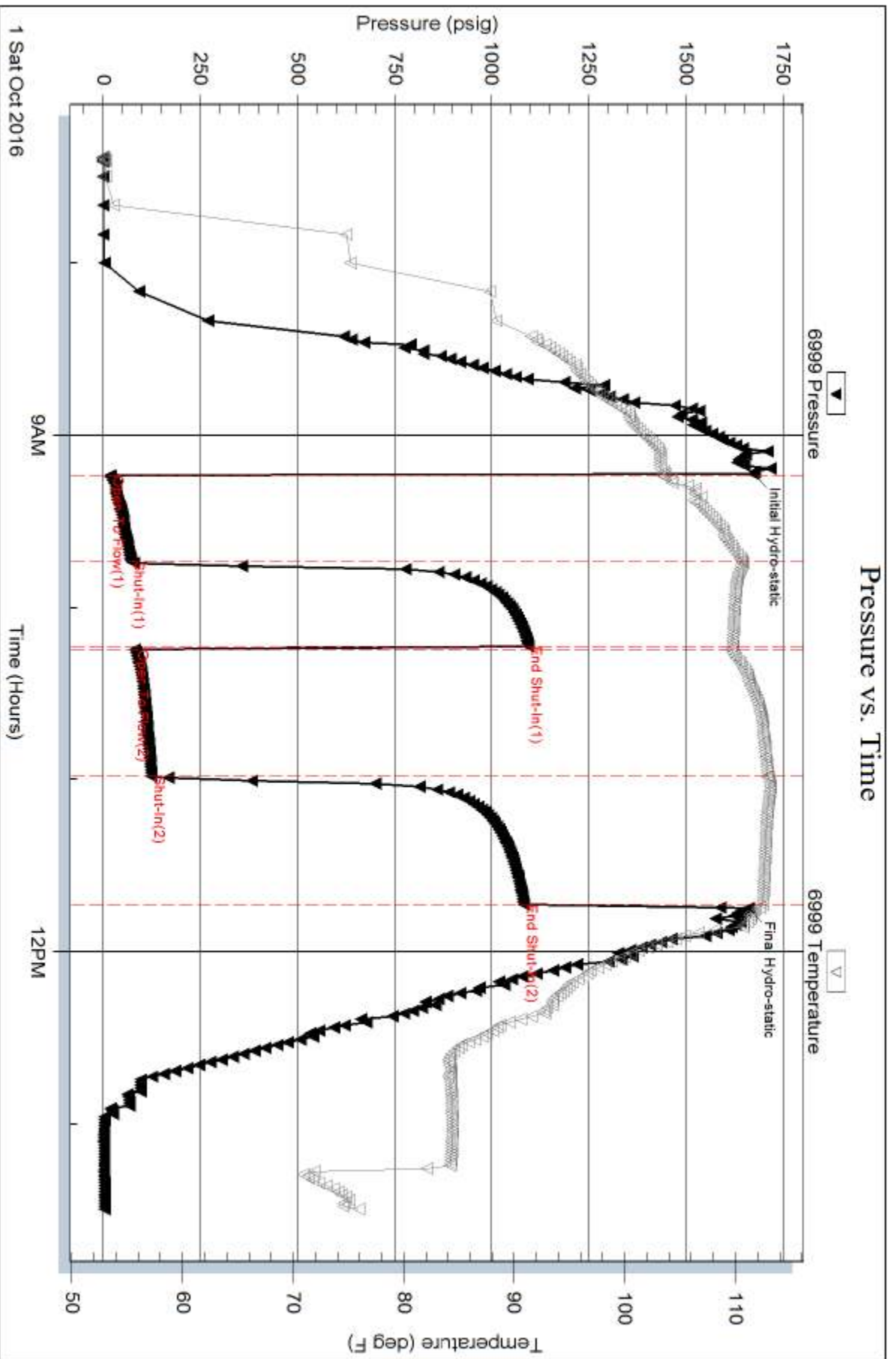
Num Gas Bombs: 0

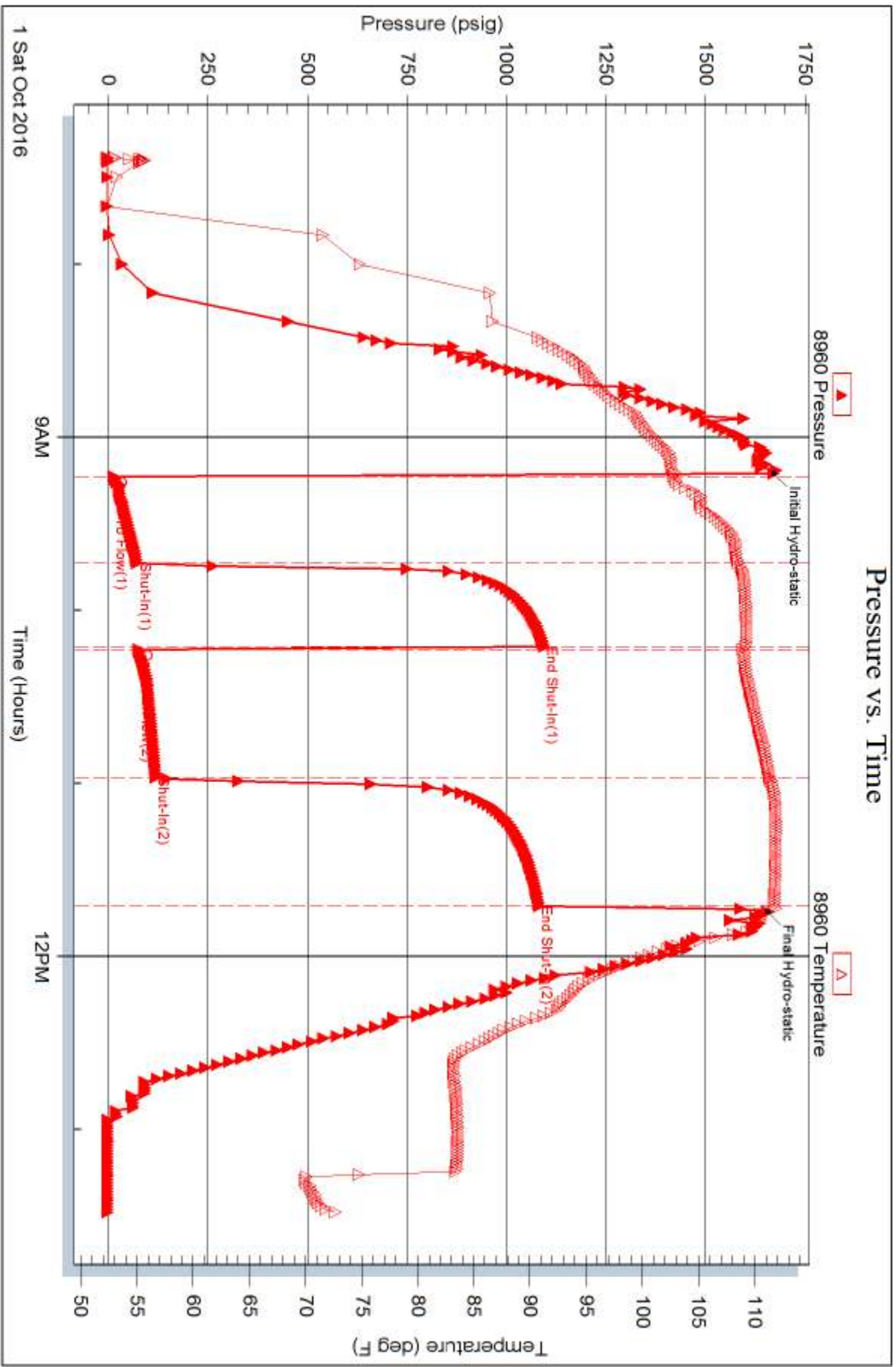
Serial #:

Laboratory Name:

Laboratory Location:

Recovery Comments: Recovery Resistivity .136 ohms @ 81 deg











**TRILOBITE  
TESTING, INC**

# DRILL STEM TEST REPORT

**FLUID SUMMARY**

O'Brien Resources LLC

**4/19S/17W/Rush**

PO Box 6149  
Shreveport, LA 71136+6149

**Jecha 4 #2**

Job Ticket: 61928

**DST#: 2**

ATTN: Wyatt Urban

Test Start: 2016.10.03 @ 00:07:00

## Mud and Cushion Information

Mud Type: Gel Chem

Cushion Type:

Oil API:

45 deg API

Mud Weight: 9.00 lb/gal

Cushion Length:

ft

Water Salinity:

ppm

Viscosity: 50.00 sec/qt

Cushion Volume:

bbbl

Water Loss: 9.59 in<sup>3</sup>

Gas Cushion Type:

Resistivity: ohm.m

Gas Cushion Pressure:

psig

Salinity: 6700.00 ppm

Filter Cake: 1.00 inches

## Recovery Information

Recovery Table

Length ft	Description	Volume bbl
93.00	Oily Mud/ Oil 20% Mud 80%	0.457
103.00	Clean Oil 100%	0.640

Total Length: 196.00 ft

Total Volume: 1.097 bbl

Num Fluid Samples: 0

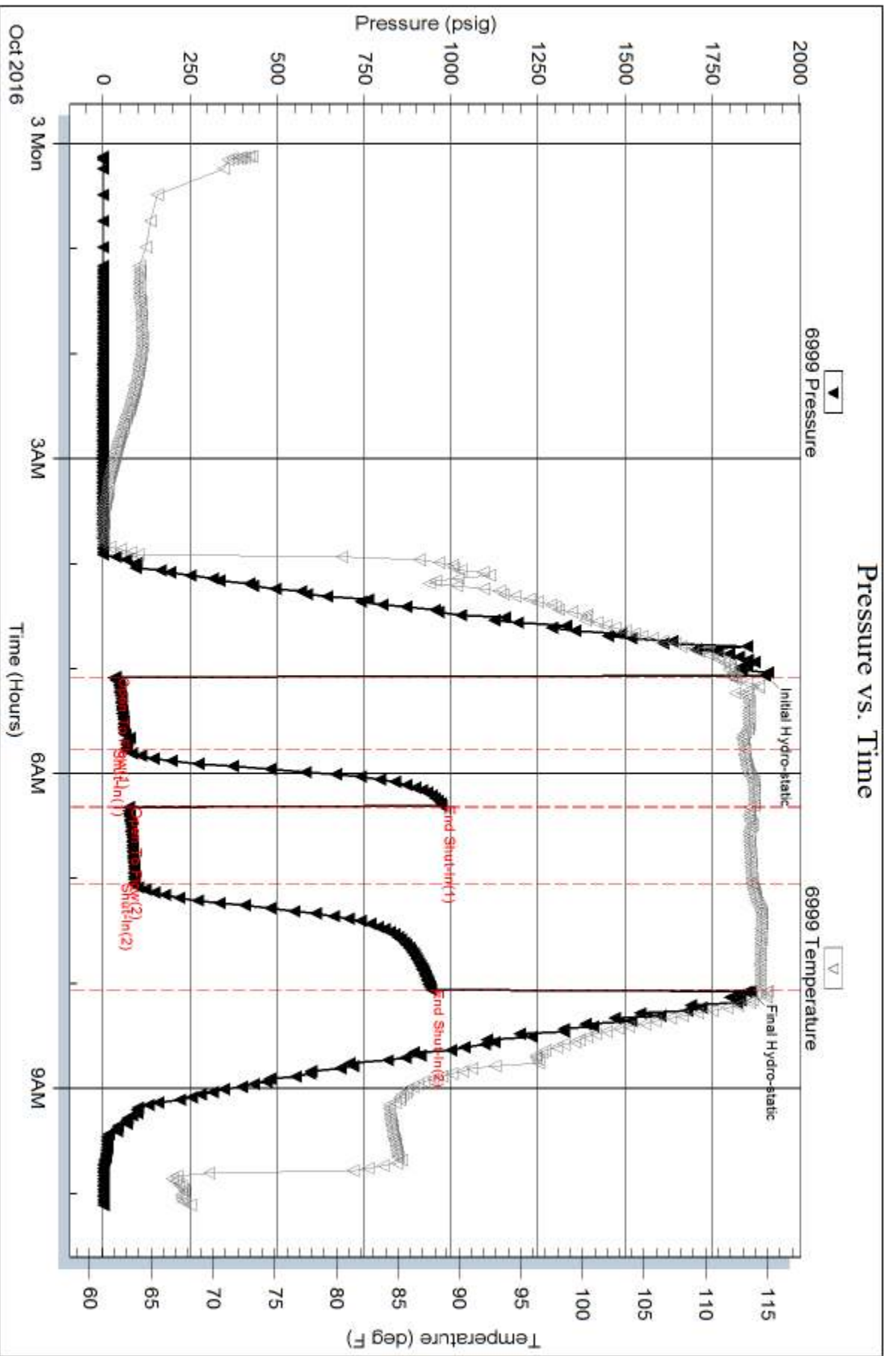
Num Gas Bombs: 0

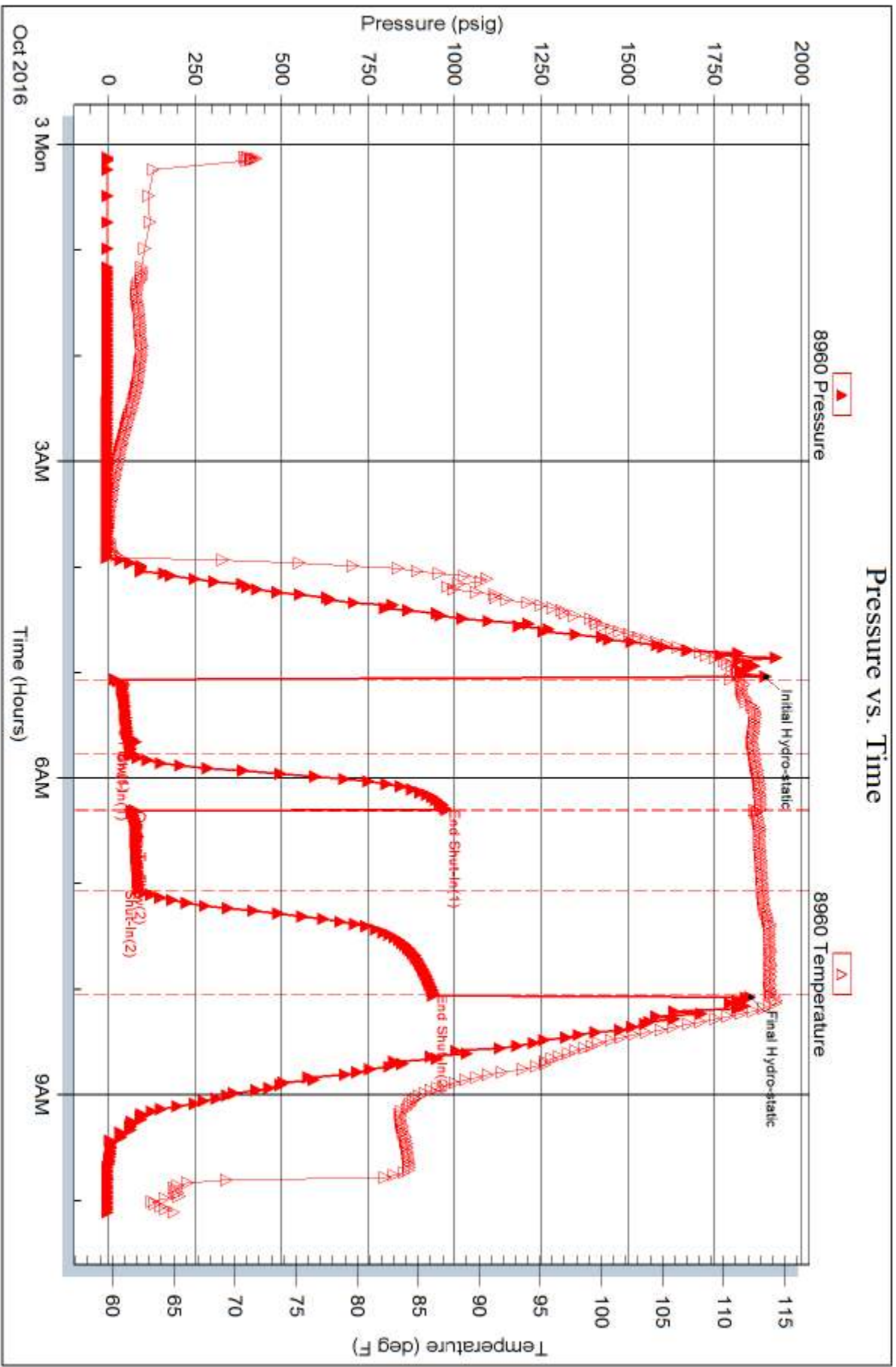
Serial #:

Laboratory Name:

Laboratory Location:

Recovery Comments:







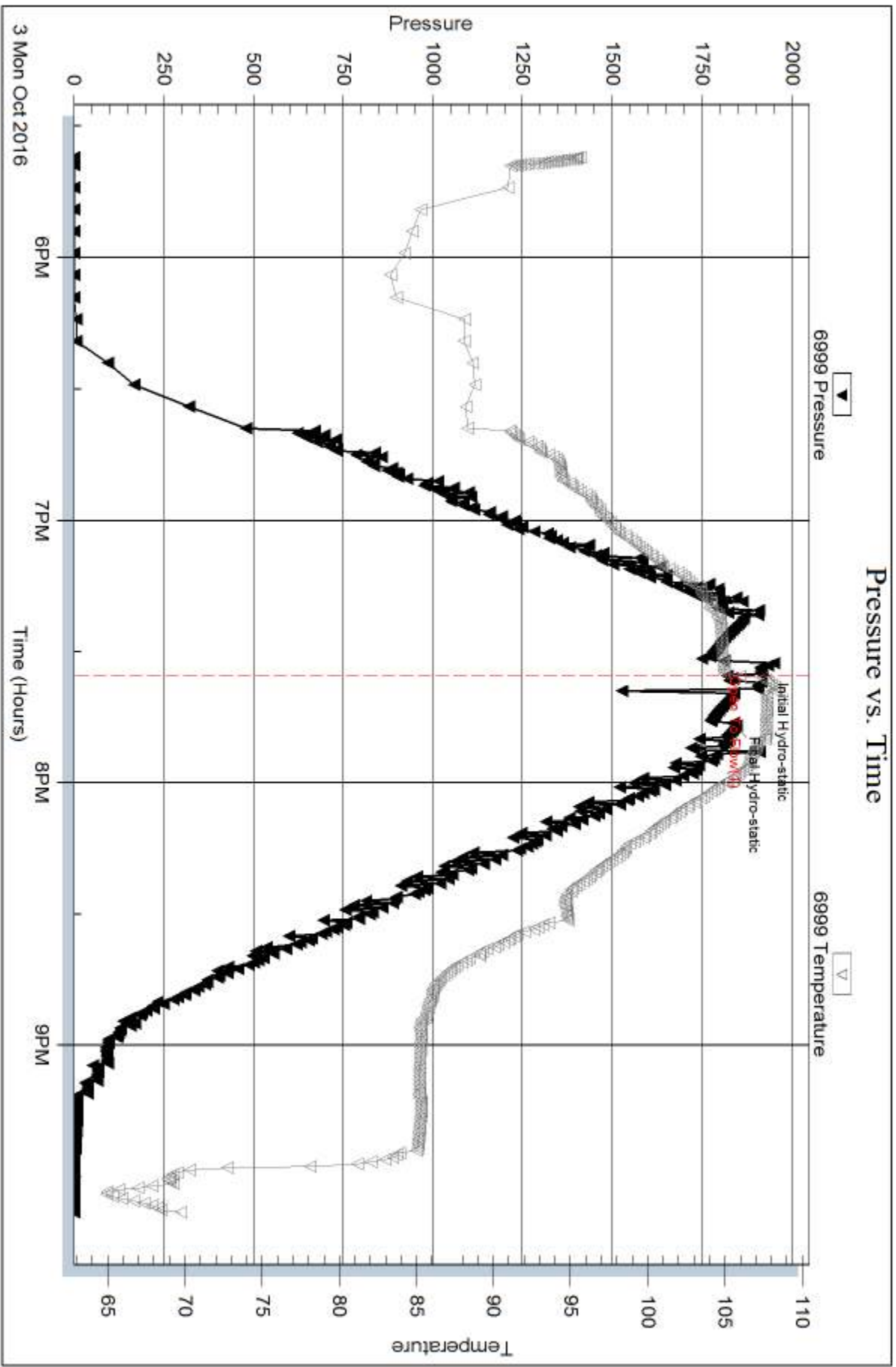
Serial #: 6999

Inside

O'Brien Resources LLC

Jechta 4#2

DST Test Number: 3



Trilobite Testing, Inc

Ref. No: 61929

Printed: 2016.10.04 @ 06:06:14



**TRILOBITE TESTING, INC**

# DRILL STEM TEST REPORT

O'Brien Resources LLC  
 PO Box 6149  
 Shreveport, LA 71136+6149  
 ATTN: Wyatt Urban

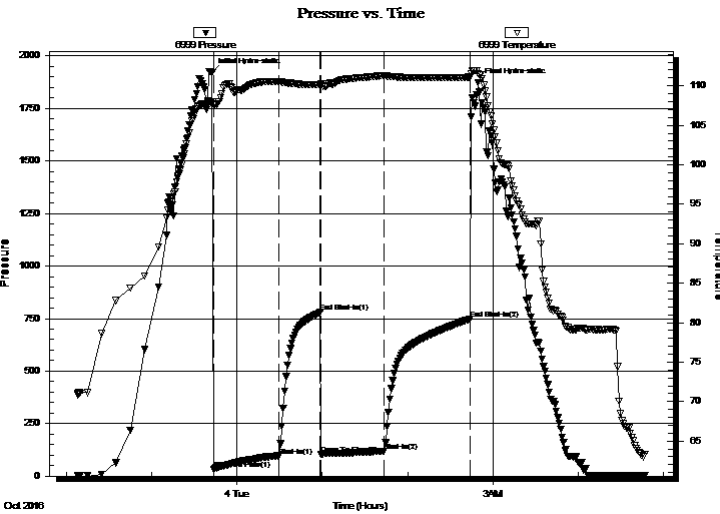
**4/19S/17W/Rush**  
**Jecha 4 #2**  
 Job Ticket: 61930 **DST#: 4**  
 Test Start: 2016.10.03 @ 22:08:00

## GENERAL INFORMATION:

Formation: **Arbuckle**  
 Deviated: No Whipstock: ft (KB)  
 Time Tool Opened: 23:43:30  
 Time Test Ended: 04:47:00  
 Interval: **3723.00 ft (KB) To 3852.00 ft (KB) (TVD)**  
 Total Depth: 38552.00 ft (KB) (TVD)  
 Hole Diameter: 7.80 inches Hole Condition: Fair  
 Test Type: Conventional Bottom Hole (Initial)  
 Tester: Ken Swinney  
 Unit No: 72 Great Bend/56  
 Reference Elevations: 2087.00 ft (KB)  
 2074.00 ft (CF)  
 KB to GR/CF: 13.00 ft

**Serial #: 6999 Inside**  
 Press@RunDepth: 119.03 psig @ 3847.91 ft (KB) Capacity: 8000.00 psig  
 Start Date: 2016.10.03 End Date: 2016.10.04 Last Calib.: 2016.10.04  
 Start Time: 22:08:05 End Time: 04:46:59 Time On Btm: 2016.10.03 @ 23:42:30  
 Time Off Btm: 2016.10.04 @ 02:49:30

TEST COMMENT: I.F. 45 minutes/ Blow built to 11 inches  
 I.S.I. 30 minutes/Light surface blow back  
 F.F. 45 minutes/ Blow built to 7 inches  
 F.S.I. 60 minutes/ No blow back



## PRESSURE SUMMARY

Time (Min.)	Pressure (psig)	Temp (deg F)	Annotation
0	1922.00	107.97	Initial Hydro-static
1	33.98	107.59	Open To Flow (1)
47	96.13	110.57	Shut-In(1)
76	779.44	110.19	End Shut-In(1)
77	102.90	110.12	Open To Flow (2)
121	119.03	111.30	Shut-In(2)
182	748.15	111.10	End Shut-In(2)
187	1873.56	111.58	Final Hydro-static

## Recovery

Length (ft)	Description	Volume (bbl)
186.00	Oil cut Watery Mud	0.96
0.00	Oil 2% Water 18% Mud 80%	0.00
62.00	Clean Oil 100%	0.87

## Gas Rates

	Choke (inches)	Pressure (psig)	Gas Rate (Mcf/d)





**TRILOBITE  
TESTING, INC**

# DRILL STEM TEST REPORT

## FLUID SUMMARY

OBrien Resources LLC

**4/19S/17W/Rush**

PO Box 6149  
Shreveport, LA 71136+6149

**Jecha 4 #2**

Job Ticket: 61930

**DST#: 4**

ATTN: Wyatt Urban

Test Start: 2016.10.03 @ 22:08:00

### Mud and Cushion Information

Mud Type: Gel Chem

Cushion Type:

Oil API:

45 deg API

Mud Weight: 9.00 lb/gal

Cushion Length:

ft

Water Salinity:

13000 ppm

Viscosity: 58.00 sec/qt

Cushion Volume:

bbbl

Water Loss: 11.59 in<sup>3</sup>

Gas Cushion Type:

Resistivity: ohm.m

Gas Cushion Pressure:

psig

Salinity: 8100.00 ppm

Filter Cake: 1.00 inches

### Recovery Information

Recovery Table

Length ft	Description	Volume bbbl
186.00	Oil cut Watery Mud	0.958
0.00	Oil 2% Water 18% Mud 80%	0.000
62.00	Clean Oil 100%	0.870

Total Length: 248.00 ft      Total Volume: 1.828 bbl

Num Fluid Samples: 0

Num Gas Bombs: 0

Serial #:

Laboratory Name:

Laboratory Location:

Recovery Comments: Recovery Resistivity .53 ohms @ 67 deg

### Pressure vs. Time

