



DRILL STEM TEST REPORT

Prepared For: **SHELBY RESOURCES LLC**

2717 CANAL BLVD SUITE C
HAYS, KANSAS 67601

ATTN: KEITH REAVIS

STOSS 1-24

Start Date: 2016.09.11 @ 11:15:00

End Date:

Job Ticket #: 01127

DST #: 1

Eagle Testers
1309 Patton Road Great Bend, Kansas 67530
620-791-7394

Printed: 2016.09.11 @ 05:26:12

SHELBY RESOURCES LLC

STOSS 1-24

DST # 1

TORONTO LANSING A-B

2016.09.11



DRILL STEM TEST REPORT

SHELBY RESOURCES LLC

2717 CANAL BLVD SUITE C
HAYS, KANSAS 67601

ATTN: KEITH REAVIS

STOSS 1-24

Job Ticket: 01127

DST#: 1

Test Start: 2016.09.11 @ 11:15:00

GENERAL INFORMATION:

Formation: **TORONTO LANSING A-B**

Deviated: No Whipstock: ft (KB)

Time Tool Opened: 00:00:00

Time Test Ended:

Test Type: Conventional Bottom Hole (Initial)

Tester: GENE BUDIG

Unit No: 1-19

Interval: 3070.00 ft (KB) To 3200.00 ft (KB) (TVD)

Reference Elevations: 1908.00 ft (KB)

Total Depth: 3200.00 ft (KB) (TVD)

1897.00 ft (CF)

Hole Diameter: 7.88 inches Hole Condition: Poor

KB to GR/CF: 11.00 ft

Serial #: 9139

Outside

Press@RunDepth: 925.22 psia @ 3194.96 ft (KB)

Capacity: 5000.00 psia

Start Date: 2016.09.08

End Date:

2016.09.09

Last Calib.:

2016.09.11

Start Time: 20:05:00

End Time:

03:25:30

Time On Btm:

2016.09.08 @ 22:19:30

Time Off Btm:

2016.09.09 @ 01:41:30

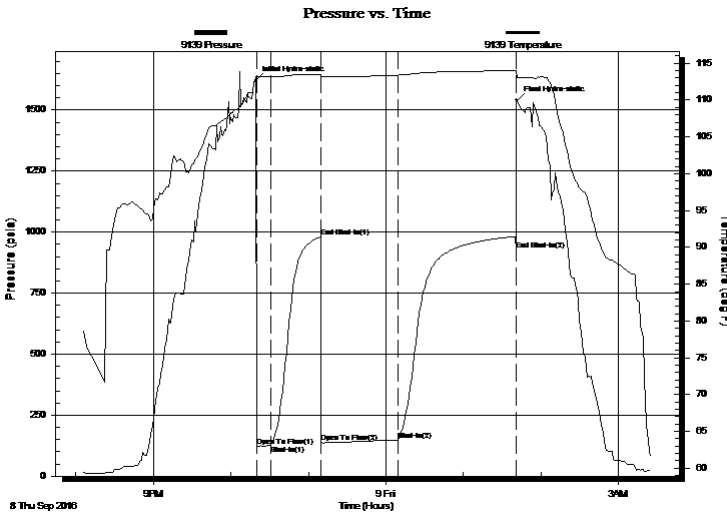
TEST COMMENT: 1ST OPENING 10 MINUTES FAIR BLOW BUILT TO 6 1/2 INCHES INTO THE WATER

1ST SHUT-IN 45 MINUTES NO BLOW BACK

2ND OPENING 60 MINUTES GOOD BLOW BUILT TO THE BOTTOM OF A 5 GALLON BUCKET IN 3 MINUTES

2ND SHUT-IN 90 MINUTES-WEAK BLOW BACK

PRESSURE SUMMARY



Time (Min.)	Pressure (psia)	Temp (deg F)	Annotation
0	1620.08	113.19	Initial Hydro-static
1	123.00	113.08	Open To Flow (1)
11	126.87	113.14	Shut-In(1)
50	980.46	113.45	End Shut-In(1)
51	138.97	113.21	Open To Flow (2)
110	148.36	113.39	Shut-In(2)
201	925.22	114.00	End Shut-In(2)
202	1538.97	113.23	Final Hydro-static

Recovery

Length (ft)	Description	Volume (bbl)
100.00	oil cut mud 10 oil 90 mud	0.58

Gas Rates

	Choke (inches)	Pressure (psia)	Gas Rate (Mcf/d)



DRILL STEM TEST REPORT

SHELBY RESOURCES LLC

2717 CANAL BLVD SUITE C
HAYS, KANSAS 67601

ATTN: KEITH REAVIS

STOSS 1-24

Job Ticket: 01127

DST#: 1

Test Start: 2016.09.11 @ 11:15:00

GENERAL INFORMATION:

Formation: **TORONTO LANSING A-B**

Deviated: No Whipstock: ft (KB)

Time Tool Opened: 00:00:00

Time Test Ended:

Test Type: Conventional Bottom Hole (Initial)

Tester: GENE BUDIG

Unit No: 1-19

Interval: 3070.00 ft (KB) To 3200.00 ft (KB) (TVD)

Reference Elevations: 1908.00 ft (KB)

Total Depth: 3200.00 ft (KB) (TVD)

1897.00 ft (CF)

Hole Diameter: 7.88 inches Hole Condition: Poor

KB to GR/CF: 11.00 ft

Serial #: 9119

Inside

Press@RunDepth: 980.51 psia @ 3194.96 ft (KB)

Capacity: 5000.00 psia

Start Date: 2016.09.08

End Date:

2016.09.09

Last Calib.:

2016.09.11

Start Time: 20:05:00

End Time:

03:25:00

Time On Btm:

2016.09.08 @ 22:19:00

Time Off Btm:

2016.09.09 @ 01:41:00

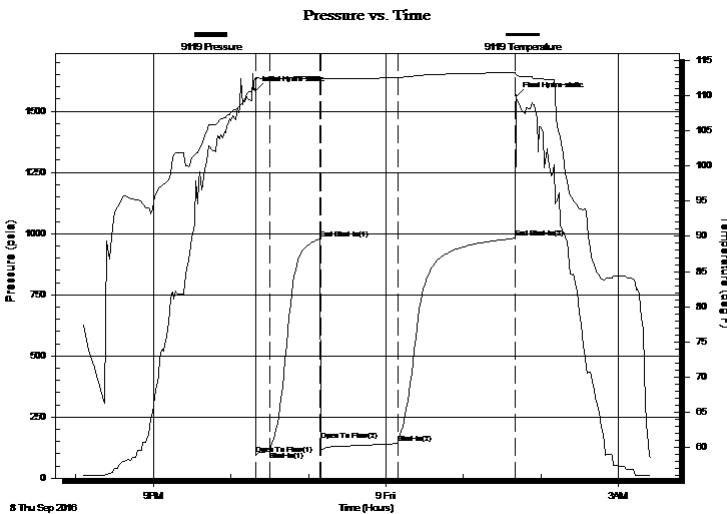
TEST COMMENT: 1ST OPENING 10 MINUTES FAIR BLOW BUILT TO 6 1/2 INCHES INTO THE WATER

1ST SHUT-IN 45 MINUTES NO BLOW BACK

2ND OPENING 60 MINUTES GOOD BLOW BUILT TO THE BOTTOM OF A 5 GALLON BUCKET IN 3 MINUTES

2ND SHUT-IN 90 MINUTES-WEAK BLOW BACK

PRESSURE SUMMARY



Time (Min.)	Pressure (psia)	Temp (deg F)	Annotation
0	1586.24	112.61	Initial Hydro-static
1	97.64	111.96	Open To Flow (1)
11	109.93	112.41	Shut-In(1)
50	979.31	112.69	End Shut-In(1)
51	154.42	112.28	Open To Flow (2)
110	141.26	112.57	Shut-In(2)
201	980.51	113.30	End Shut-In(2)
203	1561.82	112.98	Final Hydro-static

Recovery

Length (ft)	Description	Volume (bbl)
100.00	oil cut mud 10 oil 90 mud	0.58

Gas Rates

	Choke (inches)	Pressure (psia)	Gas Rate (Mcf/d)



DRILL STEM TEST REPORT

TOOL DIAGRAM

SHELBY RESOURCES LLC

2717 CANAL BLVD SUITE C
HAYS, KANSAS 67601

ATTN: KEITH REAVIS

STOSS 1-24

Job Ticket: 01127

DST#: 1

Test Start: 2016.09.11 @ 11:15:00

Tool Information

Drill Pipe:	Length: 2963.00 ft	Diameter: 3.80 inches	Volume: 41.56 bbl	Tool Weight: 2000.00 lb
Heavy Wt. Pipe:	Length: 0.00 ft	Diameter: 2.86 inches	Volume: 0.00 bbl	Weight set on Packer: 20000.00 lb
Drill Collar:	Length: 90.00 ft	Diameter: 2.25 inches	Volume: 0.44 bbl	Weight to Pull Loose: 58000.00 lb
			<u>Total Volume: 42.00 bbl</u>	Tool Chased 0.00 ft
Drill Pipe Above KB:	12.00 ft			String Weight: Initial 48000.00 lb
Depth to Top Packer:	3070.00 ft			Final 48000.00 lb
Depth to Bottom Packer:	ft			
Interval between Packers:	129.96 ft			
Tool Length:	158.96 ft			
Number of Packers:	2	Diameter: 6.75 inches		

Tool Comments:

Tool Description	Length (ft)	Serial No.	Position	Depth (ft)	Accum. Lengths
Shut In Tool	5.00			3046.00	
Hydraulic tool	5.00			3051.00	
Jars	7.00			3058.00	
Safety Joint	2.00		Fluid	3060.00	
Top Packer	5.00			3065.00	
Packer	5.00			3070.00	29.00 Bottom Of Top Packer
Anchor	3.00			3073.00	
Change Over Sub	0.75			3073.75	
Drill Pipe	95.46			3169.21	
Change Over Sub	0.75			3169.96	
Anchor	25.00			3194.96	
Recorder	0.00	9119	Inside	3194.96	
Recorder	0.00	9139	Outside	3194.96	
Bullnose	5.00			3199.96	129.96 Anchor Tool

Total Tool Length: 158.96



DRILL STEM TEST REPORT

FLUID SUMMARY

SHELBY RESOURCES LLC

2717 CANAL BLVD SUITE C
HAYS, KANSAS 67601

ATTN: KEITH REAVIS

STOSS 1-24

Job Ticket: 01127

DST#: 1

Test Start: 2016.09.11 @ 11:15:00

Mud and Cushion Information

Mud Type: Gel Chem	Cushion Type:	Oil API:	deg API
Mud Weight: 9.00 lb/gal	Cushion Length: ft	Water Salinity:	ppm
Viscosity: 64.00 sec/qt	Cushion Volume: bbl		
Water Loss: 8.00 in ³	Gas Cushion Type:		
Resistivity: ohm.m	Gas Cushion Pressure: psia		
Salinity: 3400.00 ppm			
Filter Cake: 1.00 inches			

Recovery Information

Recovery Table

Length ft	Description	Volume bbl
100.00	oil cut mud 10 oil 90 mud	0.583

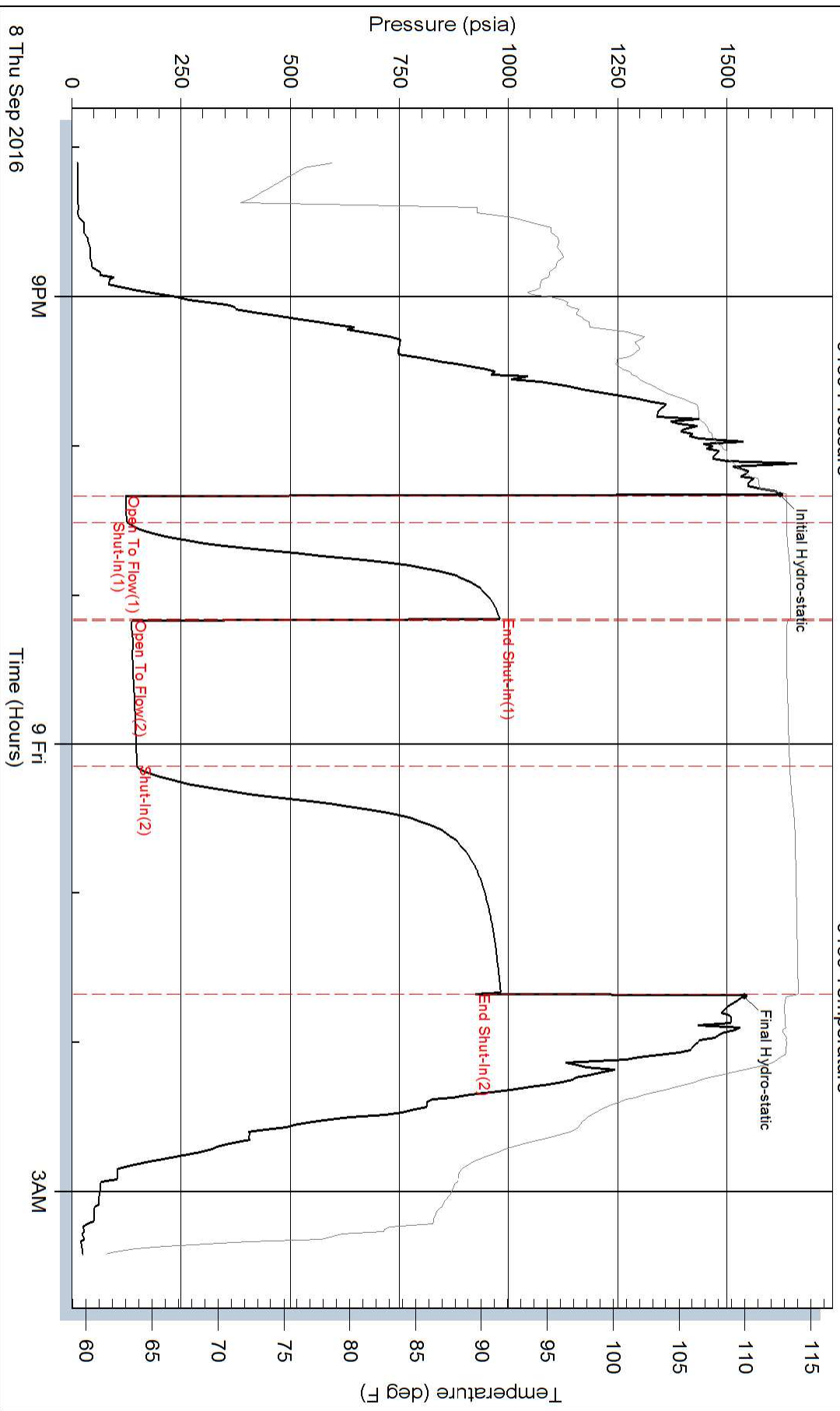
Total Length: 100.00 ft Total Volume: 0.583 bbl

Num Fluid Samples: 0 Num Gas Bombs: 0 Serial #:

Laboratory Name: Laboratory Location:

Recovery Comments:

Pressure vs. Time



Pressure vs. Time

