

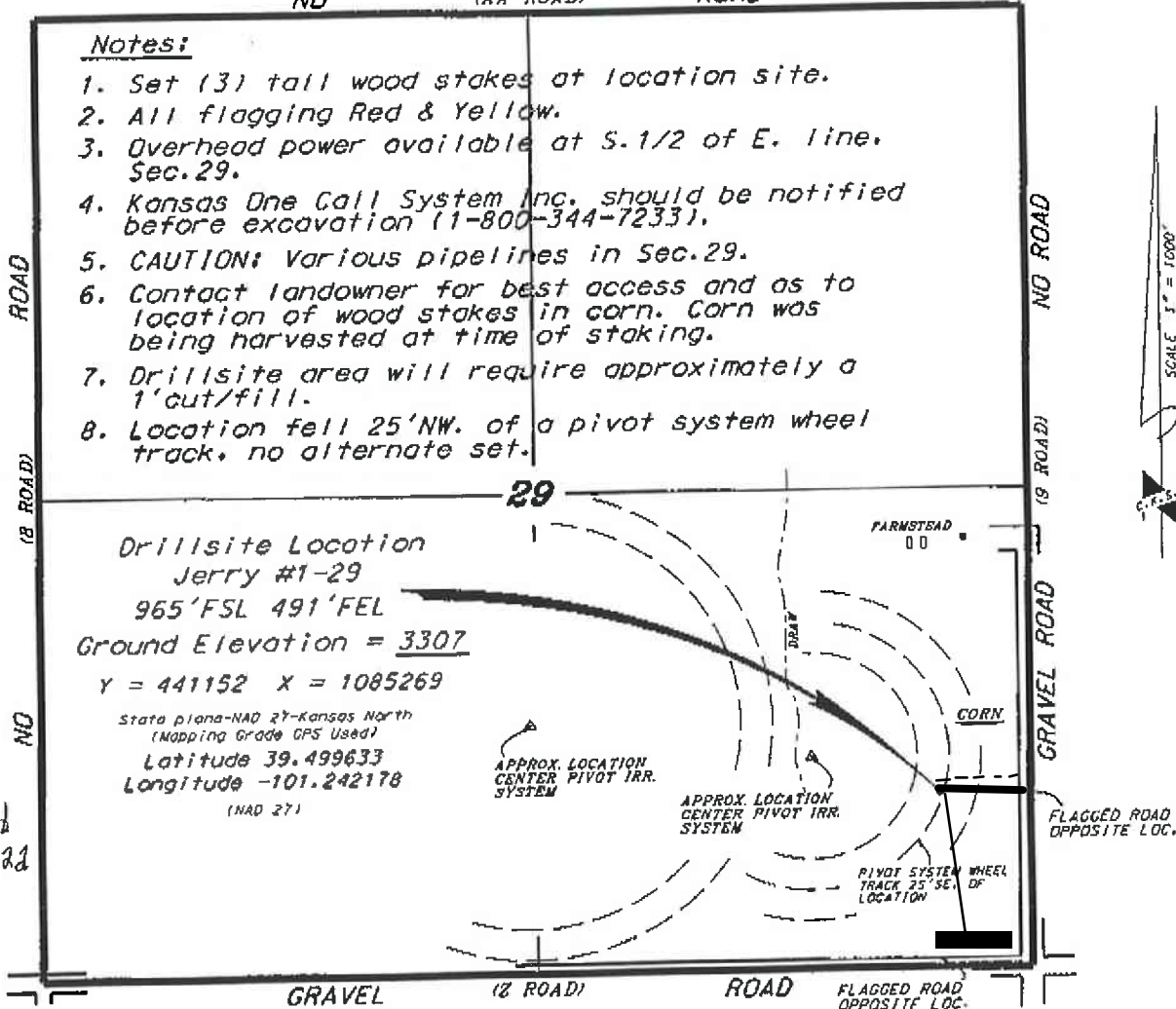
L.D. DRILLING, INC.
JERRY LEASE
SE.1/4, SECTION 29, T6S, R35W
THOMAS COUNTY, KANSAS

Directions:

From the intersection of Highway 24 and Highway 25 (in Colby, Kansas) go 7.8 miles North on Highway 25, then go 8.0 miles West, then go 1.0 miles South, then go 2.0 miles West to the SE. corner of Section 29, then go 0.18 miles North to a flag on the west side of road, then go 0.09 miles West to location.

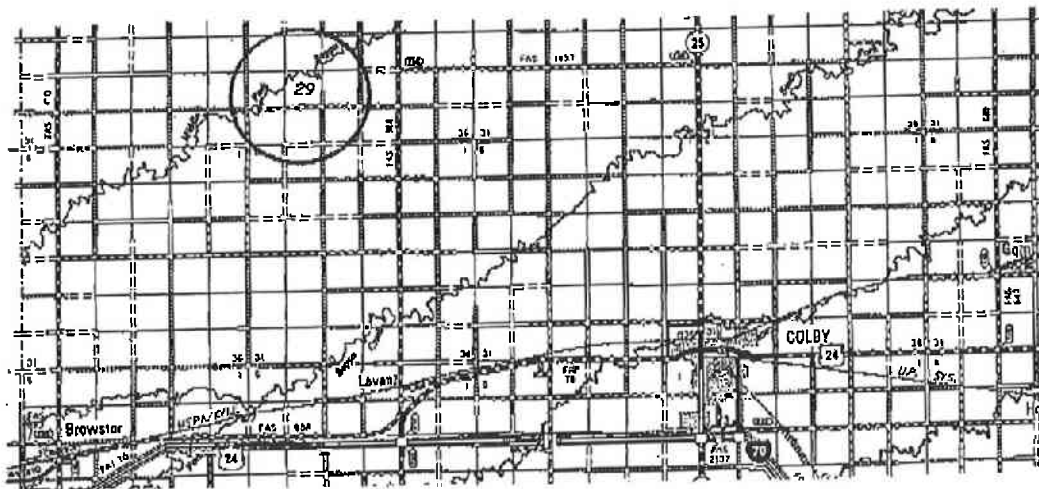
Notes:

1. Set (3) tall wood stakes at location site.
2. All flagging Red & Yellow.
3. Overhead power available at S.1/2 of E. line, Sec.29.
4. Kansas One Call System Inc. should be notified before excavation (1-800-344-7233).
5. CAUTION: Various pipelines in Sec.29.
6. Contact landowner for best access and as to location of wood stakes in corn. Corn was being harvested at time of staking.
7. Drillsite area will require approximately a 1'cut/fill.
8. Location fell 25'NW. of a pivot system wheel track, no alternate set.



*Ingress and egress to location as shown on this plat is per usage only and may not be legally opened for public use. Contact landowner, tenant and county road department for access.

cell
Jerry Baird
785.443-2522
cell #



- Controlling data is based upon the best maps and photographs available to us and upon a regular section of land containing 640 acres.
- Approximate section lines were determined using the normal standard of care of oilfield surveyors practicing in the state of Kansas, the section corners, which establish the precise section lines, were not necessarily located, and the exact location of the drillsite location in the section is not guaranteed. Therefore, the operator accepting this service and accepting this plat and all other services relying thereon agree to hold Central Kansas Oilfield Services, Inc., its officers and employees harmless from all losses, costs and expenses and said entities released from any liability from incidental or consequential damages.
- Elevations derived from National Geodetic Vertical Datum.

Date October 20, 2016

REC-10-21