

**OPERATOR**

Company: CARRIE EXPLORATION AND DEVELOPMENT, LLC  
 Address: 1611 COPPER CREEK COURT  
 HAYS, KANSAS 67601-2667

Contact Geologist: RON HEROLD  
 Contact Phone Nbr: 785-625-9318  
 Well Name: BOB THOMAS # C-2  
 Location: NE SE NW SW SEC.T19S-R11W  
 API: 15-009-26,154-00-00  
 Pool: INFIELD  
 State: KANSAS  
 Field: CHASE-SILICA  
 Country: USA

**Scale 1:240 Imperial**

Well Name: BOB THOMAS # C-2  
 Surface Location: NE SE NW SW SEC.T19S-R11W  
 Bottom Location:  
 API: 15-009-26,154-00-00  
 License Number: 6768  
 Spud Date: 10/20/2016 Time: 12:17 PM  
 Region: BARTON COUNTY  
 Drilling Completed: 10/26/2016 Time: 12:00 AM  
 Surface Coordinates: 1813' FSL & 1149' FWL  
 Bottom Hole Coordinates:  
 Ground Elevation: 1770.00ft  
 K.B. Elevation: 1778.00ft  
 Logged Interval: 2200.00ft To: 3370.00ft  
 Total Depth: 3370.00ft  
 Formation: ARBUCKLE  
 Drilling Fluid Type: CHEMICAL/FRESH WATER GEL

**SURFACE CO-ORDINATES**

Well Type: Vertical  
 Longitude: -98.5126677  
 Latitude: 38.3521914  
 N/S Co-ord: 1813' FSL  
 E/W Co-ord: 1149' FWL

**LOGGED BY**

Company: SOLUTIONS CONSULTING, INC.  
 Address: 108 W 35TH  
 HAYS, KS 67601

Phone Nbr: (785) 639-1337  
 Logged By: GEOLOGIST Name: HERB DEINES

**CONTRACTOR**

Contractor: SOUTHWIND DRILLING, INC.  
 Rig #: 3  
 Rig Type: MUD ROTARY  
 Spud Date: 10/20/2016 Time: 12:17 PM  
 TD Date: 10/26/2016 Time: 12:00 AM  
 Rig Release: 10/27/2016 Time: 6:30 AM

**ELEVATIONS**

K.B. Elevation: 1778.00ft Ground Elevation: 1770.00ft  
 K.B. to Ground: 8.00ft

**NOTES**

PRODUCTION CASING RAN BASED ON RESULTS OF DST # 3 AND LOG ANALYSIS.

<b>BOB THOMAS C-2</b>	<b>BOB THOMAS C-1</b>	<b>THOMAS #7</b>
<b>NE SE NW SW</b>	<b>NE SE SW SW</b>	<b>W2 W2 SW</b>
<b>SEC.35-19S-11W</b>	<b>SEC.35-19-11W</b>	<b>SEC.35-19-11W</b>
<b>1770'GL 1778'KB</b>	<b>KB 1775'</b>	<b>KB 1775'</b>

<u>FORMATION</u>	<u>LOG TOPS</u>	<u>LOG TOPS</u>	<u>LOG TOPS</u>
Anhydrite	503 +1275	+1278	+1277
B-Anhydrite	526 +1252	+1256	
Heebner Sh.	2875-1097	-1103	-1112
Toronto	2892-1114	-1120	-1129
Brown Lime	2998-1220	-1227	-1237
LKC	3018-1240	-1249	-1258
BKC	3274-1496	-1502	-1496
Arbuckle	3284-1506	-1509	-1521
RTD	3370-1592	-1647	-1536

**SUMMARY OF DAILY ACTIVITY**

- 10-20-16** Spud 4:15 PM, set 8 5/8" surface casing to 277' w/225sxs 60/40 Pos 2%Gel 3%CC, plug down 12:00AM
- 10-21-16** 234', WOC
- 10-22-16** 1590', drilling
- 10-23-16** 2630', drilling, displaced 2599-2630', CFS 3004', short trip, CFS 3033'
- 10-24-16** 3050', CFS 3050', DST # 1 3006'-3050' "A" to "B" LKC, TIWB, CFS 3075' DST # 2 3052' to 3075' "D" LKC, TIWB, CFS 3098', TOWB
- 10-25-16** 3098', DST # 3 3076' to 3098' "F" LKC, TIWB, CFS 3118', DST #4 3102' to 3118' "G" LKC, TIWB
- 10-26-16** 3298', CFS 3288', CFS 3298', DST # 5 3270' to 3298' Arbuckle, TIWB, RTD 3370' @ 1:50PM, CCH, TOWB, Logs, TIWB, start LDDP
- 10-27-16** 3370, finish LDDP and run production casing, cement bottom stage



## DRILL STEM TEST REPORT

CARRIE EXPLOATION LLC  
 1611 COPPER CREEK C-2  
 HAYS, KANSAS 67601-2667  
 ATTN: HERB DEINES

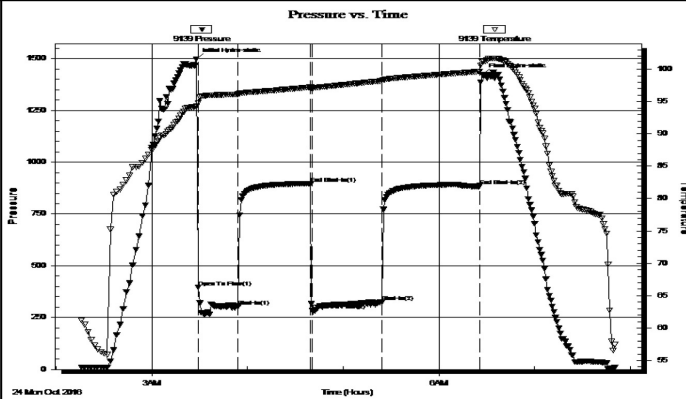
**35-19S-11W BARTON**  
**BOB THOMAS C-2**  
 Job Ticket: 01135 **DST#: 1**  
 Test Start: 2016.10.24 @ 02:15:00

### GENERAL INFORMATION:

Formation: **KANSAS CITY A-B-C**  
 Deviated: No Whipstock: ft (KB)  
 Time Tool Opened: 04:39:00  
 Time Test Ended: 00:00:00  
 Interval: **3006.00 ft (KB) To 3050.00 ft (KB) (TVD)**  
 Total Depth: 3050.00 ft (KB) (TVD)  
 Hole Diameter: 7.88 inches Hole Condition: Fair  
 Test Type: Conventional Bottom Hole (Initial)  
 Tester: GENE BUDIG 30  
 Unit No: 1  
 Reference Elevations: 1778.00 ft (KB)  
 1770.00 ft (CF)  
 KB to GR/CF: 8.00 ft

**Serial #: 9139 Inside**  
 Press@RunDepth: 886.88 psia @ 3044.76 ft (KB) Capacity: psia  
 Start Date: 2016.10.24 End Date: 2016.10.24 Last Calib.: 1899.12.30  
 Start Time: 02:16:00 End Time: 07:50:30 Time On Btm: 2016.10.24 @ 03:28:00  
 Time Off Btm: 2016.10.24 @ 06:27:00

**TEST COMMENT:** 1ST OPENING 15 MINUTES STRONG BLOW GAS TO SURFACE IN 2 MINUTES  
 1ST SHUT-IN 45 MINUTES NO BLOW BACK  
 2ND OPENING 30 MINUTES STRONG BLOW SEE GAS FLOW REPORT  
 2ND SHUT-IN 60 MINUTES WEAK BLOW BACK



### PRESSURE SUMMARY

Time (Min.)	Pressure (psia)	Temp (deg F)	Annotation
0	1497.92	94.26	Initial Hydro-static
1	395.99	94.77	Open To Flow (1)
27	304.18	96.14	Shut-In(1)
72	896.94	97.23	End Shut-In(1)
73	283.99	97.08	Open To Flow (2)
116	323.82	98.20	Shut-In(2)
178	886.88	99.66	End Shut-In(2)
179	1423.60	101.19	Final Hydro-static

### Recovery

Length (ft)	Description	Volume (bbl)
80.00	THICK HEAVY MUD	1.12
60.00	MUDDY WATER 30 MUD 70 WATER	0.84
60.00	MUDDY WATER 15 MUD 85 WATER	0.84
0.00	CHLORIDES 88000	0.00

### Gas Rates

	Choke (inches)	Pressure (psia)	Gas Rate (Mcf/d)
First Gas Rate	1.00	33.10	951.59
Last Gas Rate	1.00	34.60	994.71
Max. Gas Rate	1.00	34.60	994.71

Eagle Testers

Ref. No: 01135

Printed: 2016.10.26 @ 07:33:09



## DRILL STEM TEST REPORT

CARRIE EXPLOATION LLC  
 1611 COPPER CREEK C-2  
 HAYS, KANSAS 67601-2667  
 ATTN: HERB DEINES

**35-19S-11W BARTON**  
**BOB THOMAS C-2**  
 Job Ticket: 01136 **DST#: 2**  
 Test Start: 2016.10.24 @ 14:15:00

### GENERAL INFORMATION:

Formation: **KANSAS CITY D**

Deviated: No Whipstock: ft (KB)  
 Time Tool Opened: 15:31:00  
 Time Test Ended: 00:00:00

Test Type: Conventional Bottom Hole (Initial)  
 Tester: GENE BUDIG  
 Unit No: 1-30

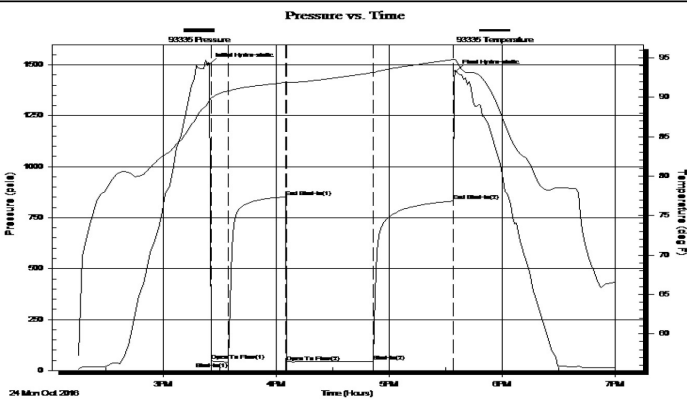
Interval: 3052.00 ft (KB) To 3075.00 ft (KB) (TVD)  
 Total Depth: 3075.00 ft (KB) (TVD)  
 Hole Diameter: 7.88 inches Hole Condition: Fair

Reference Elevations: 1778.00 ft (KB)  
 1770.00 ft (CF)  
 KB to GR/CF: 8.00 ft

**Serial #: 93335**

Press@RunDepth: 831.47 psia @ ft (KB) Capacity: psia  
 Start Date: 2016.10.24 End Date: 2016.10.24 Last Calib.: 1899.12.30  
 Start Time: 14:15:00 End Time: 19:01:00 Time On Btm: 2016.10.24 @ 15:24:30  
 Time Off Btm: 2016.10.24 @ 17:35:30

TEST COMMENT: 1ST OPENING 10 MINUTES STRONG BLOW GAS TO SURFACE IN 8 MINUTES  
 1ST SHUT-IN 30 MINUTES-NO BLOW BACK  
 2ND OPENING 45 MINUTES STRONG BLOW SEE GAS FLOW REPORT  
 2ND SHUT-IN 45 MINUTES-NO BLOW BACK



**PRESSURE SUMMARY**

Time (Min.)	Pressure (psia)	Temp (deg F)	Annotation
0	1503.93	89.61	Initial Hydro-static
1	46.92	89.89	Open To Flow (1)
10	42.20	90.78	Shut-In(1)
41	851.88	91.89	End Shut-In(1)
41	42.09	91.90	Open To Flow (2)
87	45.33	93.14	Shut-In(2)
130	831.47	94.80	End Shut-In(2)
131	1468.84	94.74	Final Hydro-static

**Recovery**

Length (ft)	Description	Volume (bbl)
15.00	MUD	0.21
0.00	THERE WAS A SLIGHT SHOW OF OIL BE0.00EN	
0.00	THE SHUT-IN AND HYDRAULIC TOOS	0.00

**Gas Rates**

	Choke (inches)	Pressure (psia)	Gas Rate (Mcf/d)
First Gas Rate	1.00	7.75	222.80
Last Gas Rate	1.00	7.50	215.62
Max. Gas Rate	1.00	7.75	222.80

Eagle Testers

Ref. No: 01136

Printed: 2016.10.24 @ 19:24:09



**DRILL STEM TEST REPORT**

CARRIE EXPLOATION LLC  
 1611 COPPER CREEK C-2  
 HAYS, KANSAS 67601-2667  
 ATTN: HERB DEINES

**35-19S-11W BARTON**  
**BOB THOMAS C-2**  
 Job Ticket: 01137 DST#: 3  
 Test Start: 2016.10.25 @ 12:15:00

**GENERAL INFORMATION:**

Formation: **KANSAS CITY F**  
 Deviated: No Whipstock: ft (KB)  
 Time Tool Opened: 01:26:00  
 Time Test Ended:

Test Type: Conventional Bottom Hole (Initial)  
 Tester: GENE BUDIG  
 Unit No: 1

Interval: 3076.00 ft (KB) To 3098.00 ft (KB) (TVD)  
 Total Depth: 3098.00 ft (KB) (TVD)  
 Hole Diameter: 7.88 inches Hole Condition: Fair

Reference Elevations: 1778.00 ft (KB)  
 1770.00 ft (CF)  
 KB to GR/CF: 8.00 ft

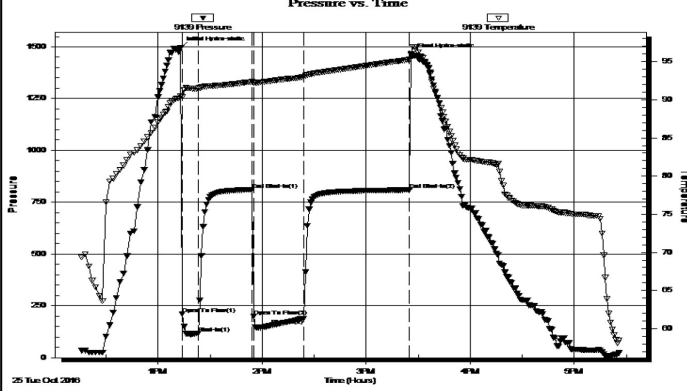
**Serial #: 9139**

**Inside**

Press@RunDepth: 809.69 psia @ 3093.00 ft (KB) Capacity: 5000.00 psia  
 Start Date: 2016.10.25 End Date: 2016.10.25 Last Calib.: 2016.10.25  
 Start Time: 12:16:00 End Time: 17:26:30 Time On Btm: 2016.10.25 @ 13:13:00  
 Time Off Btm: 2016.10.25 @ 15:26:00

TEST COMMENT: 1ST OPENING 10 MINUTES STRONG BLOW GAS TO SURFACE IN 6 MINUTES  
 1ST SHUT-IN 30 MINUTES -STRONG BLOW BACK  
 2ND OPENING 30 MINUTES STRONG BLOW SEE GAS FLOW REPORT  
 2ND SHUT-IN 60 MINUTES STRONG BLOW BACK

**PRESSURE SUMMARY**



Time (Min.)	Pressure (psia)	Temp (deg F)	Annotation
0	1497.35	90.44	Initial Hydro-static
1	209.33	90.33	Open To Flow (1)
10	118.96	91.46	Shut-In(1)
42	811.12	92.36	End Shut-In(1)
42	198.25	92.21	Open To Flow (2)
71	188.90	93.02	Shut-In(2)
132	809.69	95.27	End Shut-In(2)
133	1461.50	96.03	Final Hydro-static

**Recovery**

Length (ft)	Description	Volume (bbl)
425.00	CLEAN GASSY OIL 50 GAS 50 OIL	5.96
0.00	GRAVITY 43 CORRECTED	0.00
60.00	HEAVY OIL AND GAS CUT MUD	0.84
0.00	35 GAS 30 OIL 35 MUD	0.00
30.00	HEAVY OIL AND GAS CUT MUD	0.42
0.00	50 GAS 20 OIL 30 MUD	0.00

**Gas Rates**

	Choke (inches)	Pressure (psia)	Gas Rate (Mcf/d)
First Gas Rate	1.00	4.25	122.18
Last Gas Rate	1.00	5.45	156.68
Max. Gas Rate	1.00	5.70	163.87

Eagle Testers

Ref. No: 01137

Printed: 2016.10.26 @ 07:34:22



**DRILL STEM TEST REPORT**

CARRIE EXPLOATION LLC

**35-19S-11W BARTON**

1611 COPPER CREEK C-2  
HAYS, KANSAS 67601-2667

**BOB THOMAS C-2**

ATTN: HERB DEINES

Job Ticket: 01138

**DST#: 4**

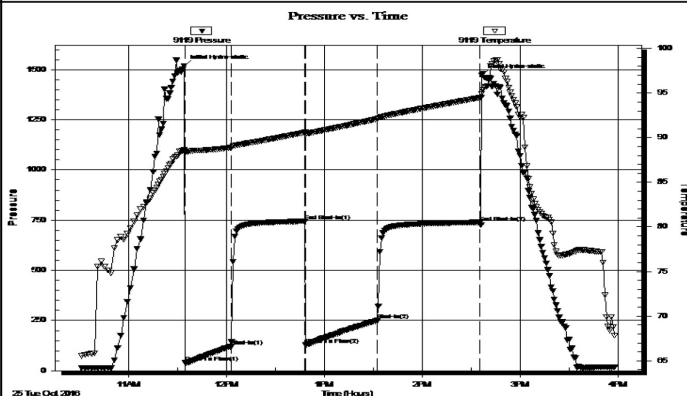
Test Start: 2016.10.25 @ 10:30:00

**GENERAL INFORMATION:**

Formation: **KANSAS CITY G**  
 Deviated: No Whipstock: ft (KB)  
 Time Tool Opened: 11:33:00  
 Time Test Ended: 00:00:00  
 Test Type: Conventional Bottom Hole (Initial)  
 Tester: GENE BUDIG  
 Unit No: 1-30  
 Interval: **3102.00 ft (KB) To 3118.00 ft (KB) (TVD)**  
 Total Depth: 3118.00 ft (KB) (TVD)  
 Hole Diameter: 7.88 inches Hole Condition: Fair  
 Reference Elevations: 1778.00 ft (KB)  
 1770.00 ft (CF)  
 KB to GR/CF: 8.00 ft

**Serial #: 9119 Inside**  
 Press@RunDepth: 739.08 psia @ 3113.00 ft (KB) Capacity: 5000.00 psia  
 Start Date: 2016.10.25 End Date: 2016.10.25 Last Calib.: 2016.10.25  
 Start Time: 10:31:00 End Time: 15:58:00 Time On Btm: 2016.10.25 @ 11:34:00  
 Time Off Btm: 2016.10.25 @ 14:36:30

**TEST COMMENT:** 1ST OPENING 30 MINUTES GOOD BLOW BUILT TO THE BOTTOM OF A 5 GALLON BUCKET IN 6 MINUTES  
 1ST SHUT-IN 45 MINUTES NO BLOW BACK  
 2ND OPENING 45 MINUTES GOOD BLOW BUILT TO THE BOTTOM OF 5 GALLON BUCKET IN 12 MINUTES  
 2ND SHUT-IN 60 MINUTES NO BLOW BACK



**PRESSURE SUMMARY**

Time (Min.)	Pressure (psia)	Temp (deg F)	Annotation
0	1518.94	88.61	Initial Hydro-static
1	40.54	88.31	Open To Flow (1)
29	120.11	88.88	Shut-In(1)
74	744.50	90.58	End Shut-In(1)
75	128.99	90.29	Open To Flow (2)
119	249.82	92.10	Shut-In(2)
182	739.08	94.48	End Shut-In(2)
183	1470.53	94.94	Final Hydro-static

**Recovery**

**Gas Rates**

Length (ft)	Description	Volume (bbl)
425.00	water chlorides 82000	5.96

Choke (inches)	Pressure (psia)	Gas Rate (Mcf/d)

Eagle Testers

Ref. No: 01138

Printed: 2016.10.26 @ 07:35:23



## DRILL STEM TEST REPORT

CARRIE EXPLOATION LLC  
 1611 COPPER CREEK C-2  
 HAYS, KANSAS 67601-2667  
 ATTN: HERB DEINES

**35-19S-11W BARTON**  
**BOB THOMAS C-2**  
 Job Ticket: 01139      **DST#: 5**  
 Test Start: 2016.10.26 @ 05:52:00

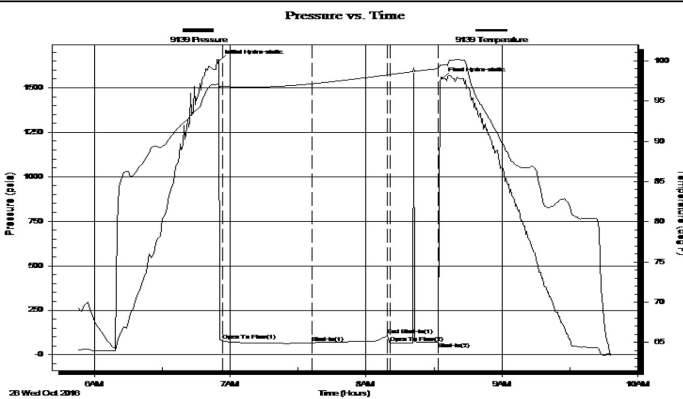
### GENERAL INFORMATION:

Formation: **ARBUCKLE**  
 Deviated: No Whipstock: ft (KB)  
 Time Tool Opened: 06:56:30  
 Time Test Ended: 09:48:30  
 Interval: **3270.00 ft (KB) To 3298.00 ft (KB) (TVD)**  
 Total Depth: 3270.00 ft (KB) (TVD)  
 Hole Diameter: 7.88 inches Hole Condition: Fair  
 Test Type: Conventional Bottom Hole (Initial)  
 Tester: GENE BUDIG  
 Unit No: 1  
 Reference Elevations: 1778.00 ft (KB)  
 1770.00 ft (CF)  
 KB to GR/CF: 8.00 ft

### Serial #: 9139

Press@RunDepth: 67.90 psia @ ft (KB)  
 Start Date: 2016.10.26 End Date: 2016.10.26 Capacity: psia  
 Start Time: 05:52:00 End Time: 09:48:30 Last Calib.: 1899.12.30  
 Time On Btm: 2016.10.26 @ 06:55:00  
 Time Off Btm: 2016.10.26 @ 08:33:30

TEST COMMENT: 1st OPENING 30 MINUTES VERY WEAK SURFACE BLOW FOR 12 MINUTES AND DIED  
 1ST SHUT-IN 45 MINUTES-NO BLOW BACK  
 2ND OPENING 20 MINUTES NO BLOW FLUSHED TOOL GOOD SURGE NO HELP  
 2ND SHUT-IN NONE TAKEN



### PRESSURE SUMMARY

Time (Min.)	Pressure (psia)	Temp (deg F)	Annotation
0	1652.66	97.13	Initial Hydro-static
2	77.73	96.82	Open To Flow (1)
41	67.90	97.14	Shut-In(1)
75	108.17	98.26	End Shut-In(1)
76	65.67	98.28	Open To Flow (2)
97	70.30	99.05	Shut-In(2)
99	1552.99	99.49	Final Hydro-static

### Recovery

Length (ft)	Description	Volume (bbl)
10.00	OIL SPOTTED MUD	0.14

### Gas Rates

Choke (inches)	Pressure (psia)	Gas Rate (Mcf/d)

Eagle Testers

Ref. No: 01139

Printed: 2016.10.26 @ 10:01:57



**ROCK TYPES**

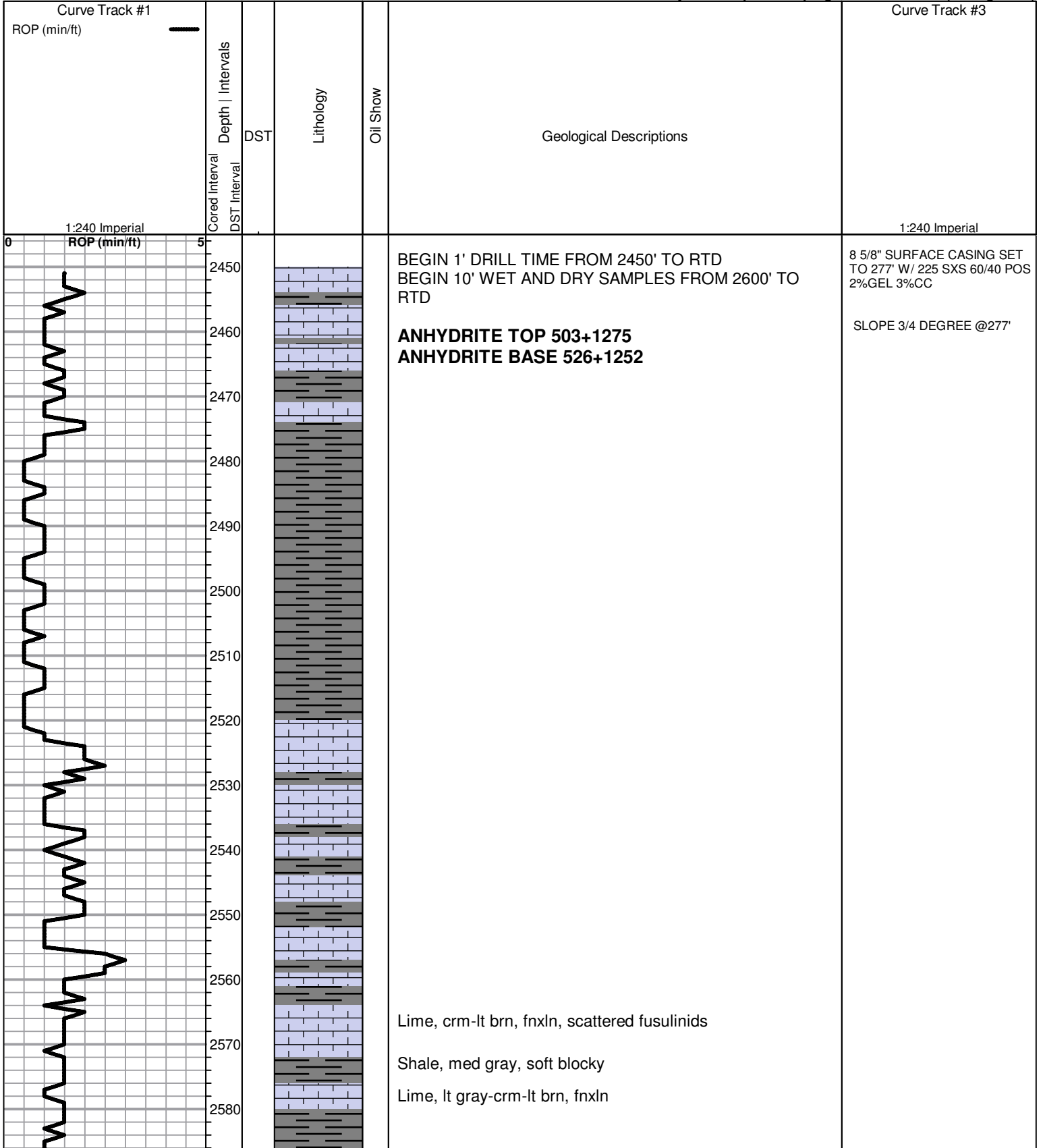


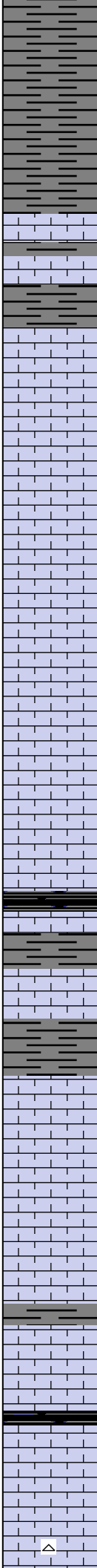
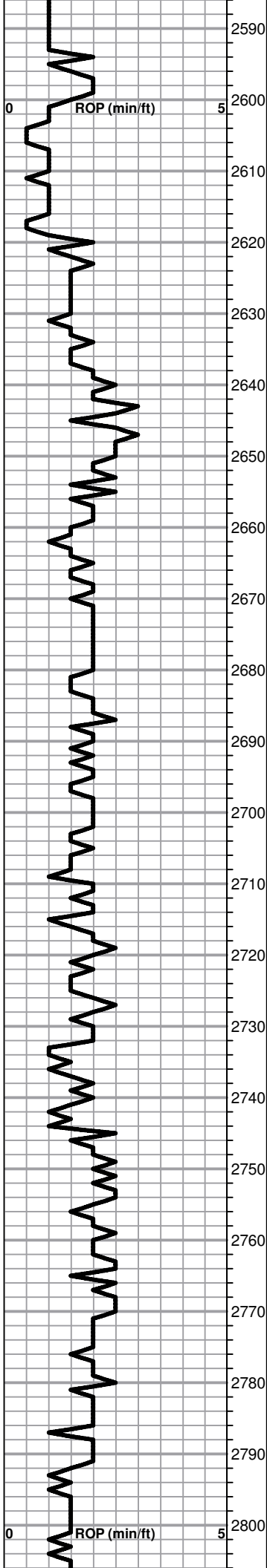
**ACCESSORIES**

**MINERAL**  
 △ Chert White

**FOSSIL**  
 ○ Oolite  
 ⊕ Oomoldic

Printed by GEOstrip VC Striplog version 4.0.8.15 (www.grsi.ca)





Shale, lt-med gray, soft blocky, few chips with micaceous flakes

Shale, lt-med gray, soft blocky

Lime, white-crm, fnxln, some gray mottling in part

Lime, crm-lt brn-lt grayish brn, fnxln with scattered fusulinids

Lime, lt brn, fn-vfxln

Lime, crm-lt brn, fnxln

Lime, lt-med brn, fnxln with scattered granular chips, NS

Lime, lt brn, fnxln, chalky in a chalk matrix

Lime, lt-med brn, fnxln

Lime, lt-med brn, fnxln

Lime, lt-med brn, fnxln with scattered granular in part

Shale, gray to black carbonaceous, blocky

Lime, lt-med brn, fn-vfxln, slightly fossiliferous

Lime, crm-lt brn, fnxln  
Shale, med gray, firm, calcareous in part

Lime, crm-lt brn, fnxln

Lime, lt-med brn-lt grayish brn, fn-vfxln, slightly fossiliferous

Lime, crm-lt brn, fnxln

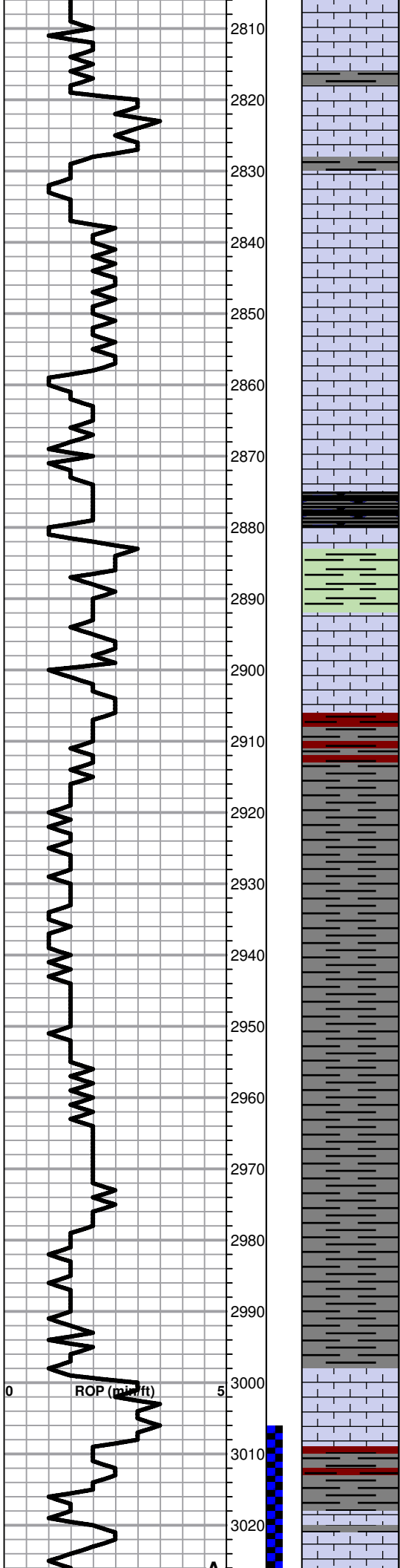
Lime, crm-lt brn, fnxln

Lime, crm-lt brn, fnxln  
Shale, black carbonaceous, fissile, blocky

Lime, crm, fnxln

Lime, crm-lt brn, fn-vfxln  
Chert, white, fresh, sharp





Chert, white, fresh, sharp

Lime, lt brn-lt gray, fn-vfxln, hard on crush

Lime, lt brn-lt gray, fn-vfxln, slightly fossiliferous

Lime, crm-lt brn, fn-vfxln

Lime, lt brn, fn-vfxln

Lime, lt-med brn, fn-vfxln

Lime, lt-med brn, fnxln

Lime, crm-lt brn, fnxln

**HEEBNER SHALE 2875-1097**

Shale, black carbonaceous, fissile, blocky

Lime, lt grayish brn, vfxln

Shale, lime green to dove gray, soft sticky clumps

**TORONTO 2892-1114**

○ Lime, white, fnxln, spotty dark stain, fossil casts, NFO

**DOUGLAS SHALE 2905-1127**

Shale, red-lt gray, soft blocky

Shale, lt-med gray, soft-firm blocky

Shale, lt-med gray, soft blocky

Sandstone, fine gritty, poorly sorted, scattered lt stain

Lime, lt gray, soft blocky

Shale, lt gray, soft blocky with fine gritty sandstone chips

Shale, lt gray, soft blocky

Shale, lt gray, soft sticky clumping to soft blocky

Shale, lt gray, soft mud to soft blocky

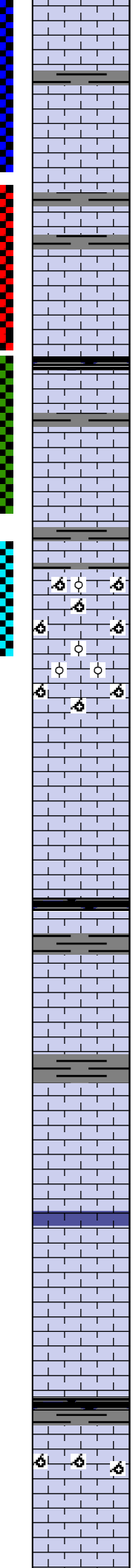
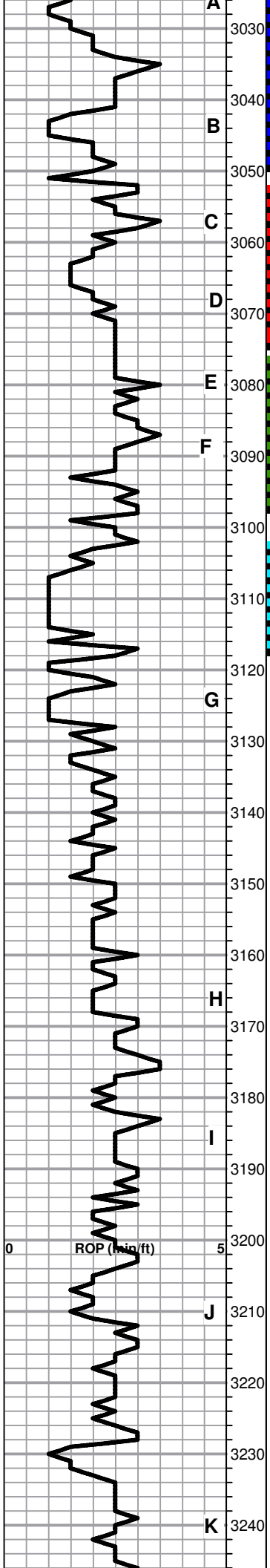
**BROWN LIME 2998-1220**

Lime, med brn, fn-vfxln, slightly fossiliferous

Shale, red to lt gray, soft sticky clumping

**LKC 3018-1240**

Lime, lt-med brn, fn-vfxln, NS, No Odor



Lime, lt-med brn, fn-vfxln

○ Lime, white-crm, oomoldic/oolitic, dark , staining, lt odor, NFO

Lime, lt brn-lt grayish brn, fn-vfxln, hard on crush, slightly fossiliferous

○ Shale, med gray-green, soft blocky  
Lime, crm-lt brn, thin fossiliferous with scattered pinpoint vuggy porosity, lt stain, NFO, very lt odor

Lime, lt brn-lt grayish brn, fn-vfxln

Lime, med brn-med grayish brn, fn-vfxln with chips of fine fossil and oolitic contact with scattered to sat stain, NFO

Lime, med brn, fn-vfxln

○ Lime lt brn, fnxln with white chalky wash grading into cemented oolitic zone grading into oomoldic zone. Scattered dark staining, NFO, questionable odor

Lime, lt-med brn, fnxln

Lime, lt brn, oolitic/oomoldic, NFO, No odor, lot of barren chips

Lime, crm, fnxln with bedded chalk

Lime, lt brn, fnxln

Shale, black carbonaceous, blocky  
Lime, lt brn-lt grayish brn, fnxln  
Shale, lt gray, firm, blocky with some sticky clumps in part

Lime, lt brn, fnxln, bedded chalk, NS

Lime, crm-lt brn, fnxln with scattered barron oomoldic chips

Lime, crm-lt brn, fn-vfxln

Lime, crm-lt brn, fnxln with few oolitic chips with trace of lt staining, NFO, no odor, not well developed in appearance

Lime, lt brn, fn-vfxln, NS

Lime, crm-lt brn, fnxln with white chalky wash from bedded chalk

Shale, med gray-black carbonaceous, soft blocky

Lime, crm-lt brn, fnxln with scattered oomoldic chips, NS

Lime, crm-lt brn, fn-vfxln

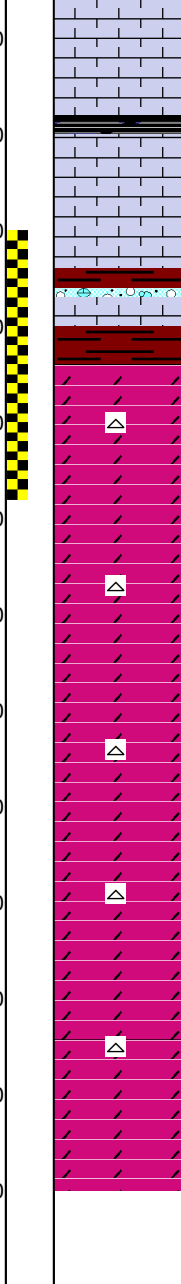
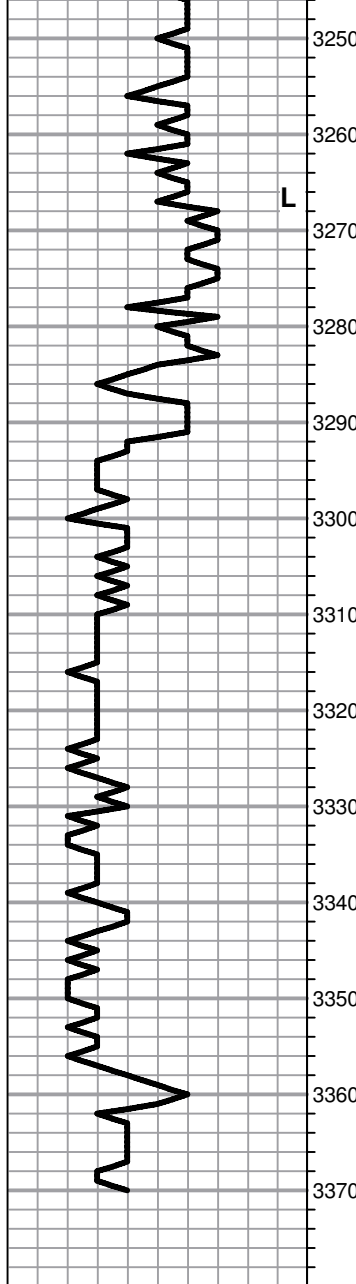
CFS 3033'

SLOPE 1 3/4 DEGREE @3050'

DST # 2 3052' TO 3075' SEE HEADER FOR TEST SUMMARY

DST # 3 3076' TO 3098' SEE HEADER FOR TEST SUMMARY

DST # 4 3102' TO 3118' SEE HEADER FOR TEST SUMMARY



Lime, crm-lt brn, fn-vfxln

Shale, med gray-black carbonaceous, blocky

Lime, lt brn, fn-vfxln, slight bedded chalk

**BKC 3274-1496**

Shale, red, soft-firm blocky

**ARBUCKLE 3284-1506**

Dolomite, fnxln, lt odor increasing with depth, some granular, fn grained with spotty lt staining, show lt gassy oil on crush

Dolomite, crm-lt brn, fnxln-granular, fine grained, strong odor with lt even staining in part  
 Chert, white, fresh, sharp, oolitic in part

Dolomite, lt-med brn, fnxln-granular with scattered oomoldic chips, decreasing odor intensity

Dolomite, ivory-lt brn, fnxln-granular, fine grained with some fine-medium granular material

Dolomite, ivory-lt brn, fnxln-granular, decreasing lt odor

Dolomite, lt brn, fnxln-granular

Dolomite, crm-lt brn, fnxln-granular

Dolomite, crm-lt brn, fnxln-granular

**RTD 3370-1592    LTD 3369-1591**

DST # 5 3270' TO 3298' SEE HEADER FOR TEST SUMMARY

SET 5 1/2" USED PRODUCTION CASING TO 3368' W/ 155 SXS AA-2

SLOPE 1 3/4 DEGREE @3370'