

**Thomas J. Funk**  
**Petroleum Geologist**

**Geologists' Report**  
**Drilling Time and Sample Log**

**OPERATOR** Funk Petroleum, LLC

**LEASE** Wiekan

**FIELD** Wildcat

**LOCATION** 100' FSL & 407' FWL

**SEC.** 10

**COUNTY** Thomas

**CONTRACTOR** Murfin Dig Co, Rig #7

**COMD** 9/21/16

**RTD** 4900'

**SAMPLES SAVED FROM** 3800'

**DRILLING TIME KEPT FROM** 3800'

**SAMPLES EXAMINED FROM** 3800'

**GEOLOGICAL SUPERVISION FROM** 3800'

**MUD UP** 3400'

**LOG**

**TOP DATUM**

**LOG**

**TOP DATUM**

**FORMATION**

**LOG**

**TOP DATUM**

**ELEVATION**

**KB** 3337'

**DF**

**GL** 3332'

**Measurements Are All From**

**KB**

**CASING RECORD SURFACE**

8 5/8" at 303' KB w/2525x

**PRODUCTION**

None

**ELECTRICAL SURVEYS**

Pioneer Energy Serv.

**DIL**

**MEI**

**DUQP**

**Sonic**

**ANHYDRITE**

**SALT**

**SANDSTONE**

**SHALE**

**CARB SHALE**

**LIMESTONE**

**OOIL LIMESTONE**

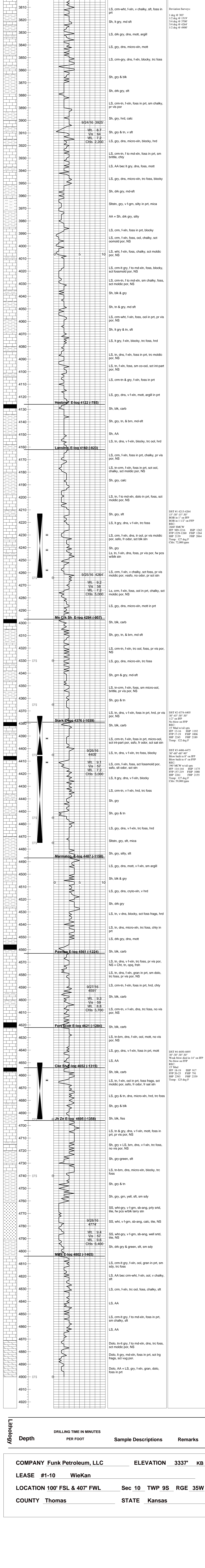
**CHERT**

**DOLOMITE**

Date	Daily Progress	NO. Stret	Make	Type	Begin	Out	Feet	Hours
9/21/16	Spud	1	12 1/4" HTC	VM-1	303	303	3.25	
9/22/16								
9/23/16		2	7 7/8" HTC	DF506	3700	3397	27.75	
9/24/16		3	7 7/8" HTC	GX20c	4900	1200	53	
9/25/16								
9/26/16								
9/27/16								
9/28/16								
9/29/16								

**Remarks And Recommendations:**  
 Based on sample examination, DST results, and log analysis it was decided to plug and abandon the #1-10 Wiekan.

**Thomas Funk**  
**Petroleum Geologist**



<b>COMPANY</b> Funk Petroleum, LLC	<b>ELEVATION</b> 3337'	<b>KB</b>
<b>LEASE</b> #1-10 Wiekan		
<b>LOCATION</b> 100' FSL & 407' FWL	<b>Sec</b> 10	<b>TWP</b> 9S
	<b>RGE</b> 35W	
<b>COUNTY</b> Thomas	<b>STATE</b> Kansas	