

FUNK PETROLEUM, LLC
#1-16 Weiland Trust
2131' FNL & 1900' FWL of Section 16-T9S-R35W
THOMAS COUNTY, KANSAS
API#15-193-20973-00-00

Geologist's Report
WellSight Systems
Scale 1:240 (5"=100') Imperial
Measured Depth Log

Well Name: #1-16 Weiland Trust
API: 15-193-20973-00-00
Location: 2131' FNL & 1900' FWL of Section 16-T9S-R35W
License Number: API#15-193-20973-00-00
Spud Date: 09/30/2016
Surface Coordinates: 2131' FNL & 1900' FWL of Section 16-T9S-R35W
Region: Thomas Co., Kansas
Drilling Completed: 10/07/2016

Bottom Hole Vertical Test P&A
Coordinates:
Ground Elevation (ft): 3347 K.B. Elevation (ft): 3352
Logged Interval (ft): RTD To: 3800 Total Depth (ft): RTD 4909 LTD 4904
Formation: Mississippian
Type of Drilling Fluid: Chemical (Displaced @ 3482)

Printed by MUD.LOG from WellSight Systems 1-800-447-1534 www.WellSight.com

Operator

Company: Funk Petroleum, LLC
Address: 2110 N. 1184TH ST
Eudora, KS 66025

Geologist

Name: Richard S.(Steve) Davis Jr.
Company: Consulting Petroleum Geologist
Address: 221 N. Market, Suite 268
Wichita, Kansas 67202
Cell 316-772-6479 Home 316-686-1193

FORMATION TOPS

KB 3352

Formation	Sample	E-Log	Datum
Anhydrite	2840	2832	+520
B/Anhydrite	2866	2862	+490
Topeka	3935	3926	-574
Heebner	4135	4129	-777
Lansing	4172	4168	-816
Muncie Creek	4306	4306	-954
Stark	4389	4392	-1040
Marmaton	4478	4474	-1122
Pawnee	4581	4581	-1229
Fort Scott	4641	4638	-1286
Cherokee Sh	4672	4669	-1317
Johnson	4714	4711	-1359
Mississippi	4835	4829	-1477
Total Depth	4909	4904	-1552

DAILY PENETRATION: 7:00 AM

Date	Depth	Activity
09/30/16	0	MIRU & SPUD
10/01	605	Drlg
10/02	3280	Drlg
10/03	4040	Drlg
10/04	4450	Drlg
10/05	4710	Stuck
10/06	4740	Drlg
10/07	4909	RTD

CONTRACTOR:

Murfin Rig #7

Toolpusher: Kelly Wilson

MUD:

Mud Co (displacement complete @ 3482)

Reed Atkins

DRILL STEM TESTING: Trilobite Testing Inc.

Brandon Turley & Ray Schwager

ELECTRIC LOG: Pioneer

Jerrold Long

(DIL, CDL/CNL, MEL)

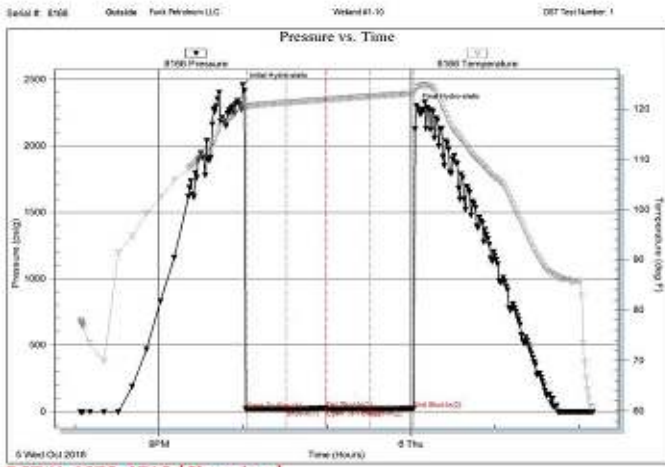
CASING RECORD:

Surface: 8 5/8" @ 303' w/ 235sx

Production: None

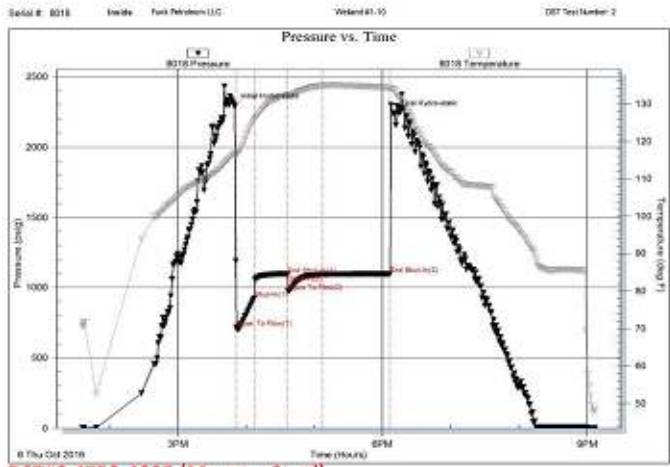
BIT RECORD:

Bit No./Size	Make/Type	Out	Ftg	Hrs
#1/ 12 1/4"	HTC/VM-1	303	303	2 3/4
#2/ 7 7/8"	HTC/DP 506	3700	3397	30 3/4
#3/ 7 7/8"	HTC/GX 20C	4909	1209	56 3/4



DST#1 4670-4710 (Cherokee)

Fixed Rate, Inc. Ref. No.: 66519 Record 2016 10 06 @ 07:36:37



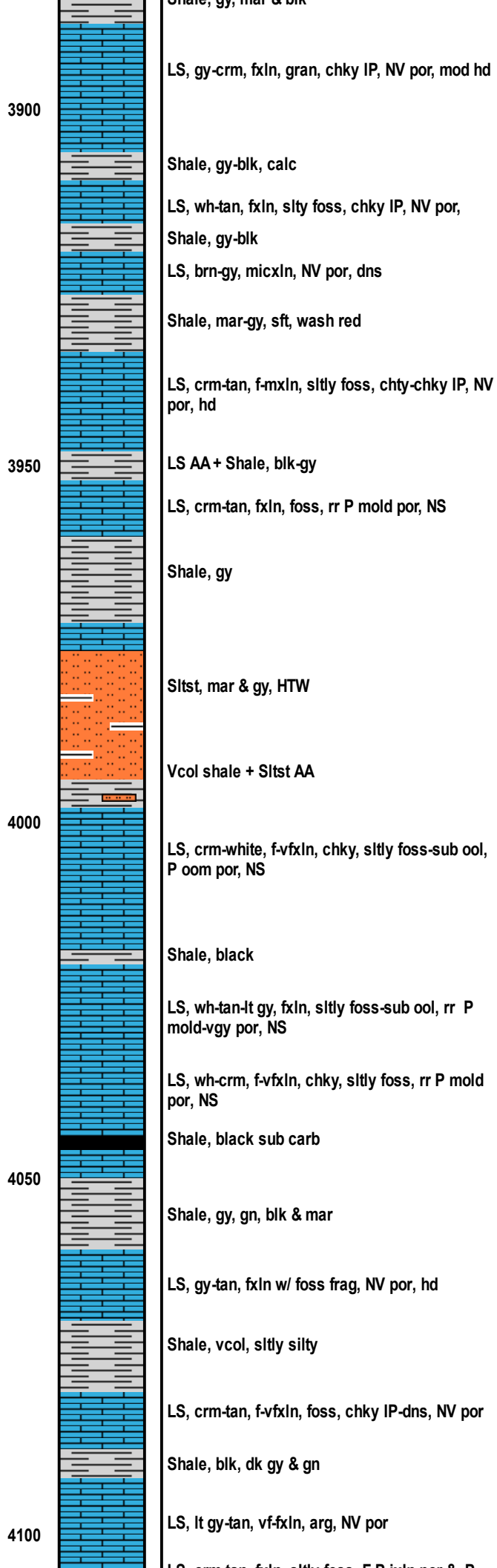
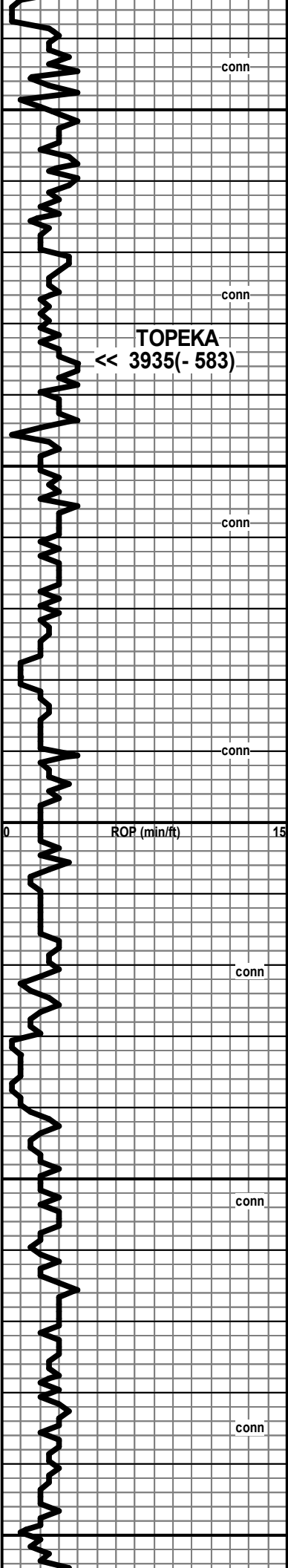
DST#2 4750-4825 (Morrow Sand)

Fixed Rate, Inc. Ref. No.: 64743 Record 2016 12 01 @ 04:45:07

Rock Types

- Anhy**
- Bent**
- Brec**
- Cht**
- Clyst**
- Coal**
- Congl**
- Dol**
- Gyp**
- Igne**
- Lmst**
- Meta**
- Mrlst**
- Salt**
- Shale**
- Shcol**
- Shgy**
- Sltst**
- Ss**
- Till**

ROP (min/ft)	Depth	Lithology	Shows	Geological Descriptions	Remarks
ROP (min/ft)					
ROP (min/ft)	3800				Vis 58 Wt 8.6 Fil 6.8 PH 11.5 Chl 2,500 LCM 1# 10/02/16 @ 3470 Pipe Strap @ 3700 1.10' Strap Long Survey 1 deg
conn				Shale, blk, gy & gn	
conn	3850			LS, gy-tan, vfxln, foss, NV por, hd	
conn				LS, gy-wh, fxln, chky, NV por, sft	
conn				LS, crm-white, f-vfxln, foss NV por, most dns	
conn				Shale, gy, mar & blk	



Shale, gy, mar & blk

LS, gy-crm, fxln, gran, chky IP, NV por, mod hd

3900

Shale, gy-blk, calc

LS, wh-tan, fxln, slty foss, chky IP, NV por,

Shale, gy-blk

LS, brn-gy, micxln, NV por, dns

Shale, mar-gy, sft, wash red

LS, crm-tan, f-mxln, slty foss, chty-chky IP, NV por, hd

3950

LS AA + Shale, blk-gy

LS, crm-tan, fxln, foss, rr P mold por, NS

Shale, gy

Siltst, mar & gy, HTW

Vcol shale + Siltst AA

4000

LS, crm-white, f-vfxln, chky, slty foss-sub ool, P oom por, NS

Shale, black

LS, wh-tan-lt gy, fxln, slty foss-sub ool, rr P mold-vgy por, NS

LS, wh-crm, f-vfxln, chky, slty foss, rr P mold por, NS

Shale, black sub carb

4050

Shale, gy, gn, blk & mar

LS, gy-tan, fxln w/ foss frag, NV por, hd

Shale, vcol, slty silty

LS, crm-tan, f-vfxln, foss, chky IP-dns, NV por

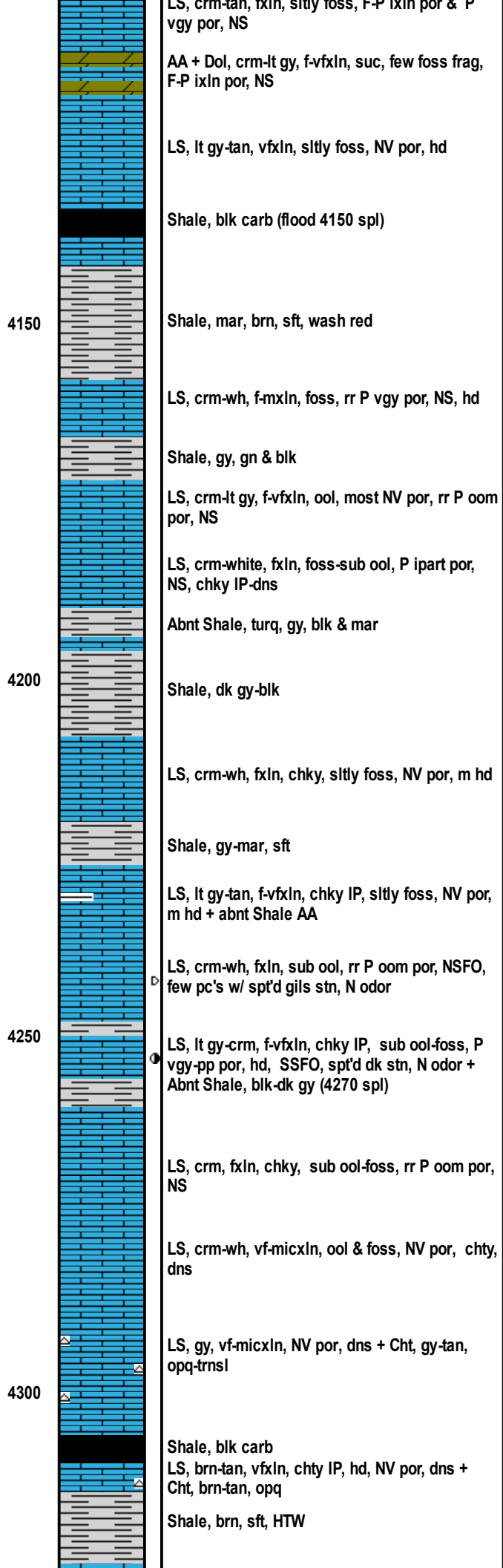
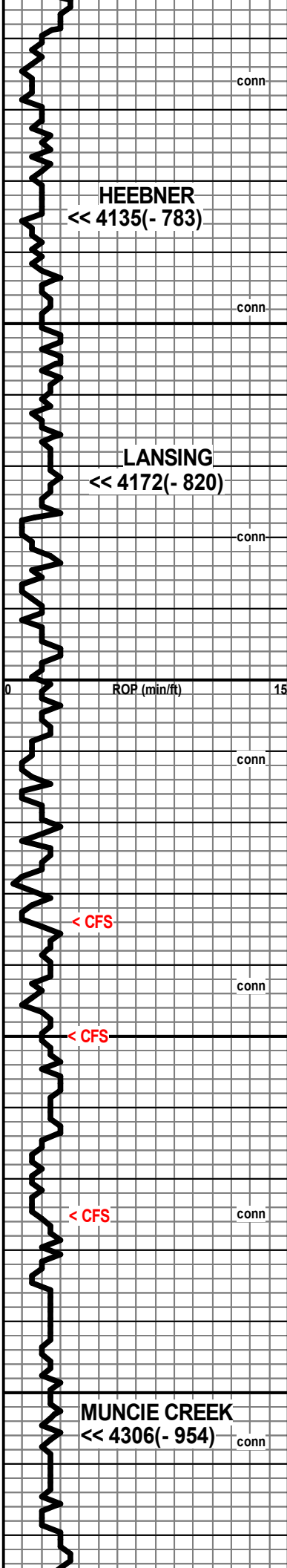
Shale, blk, dk gy & gn

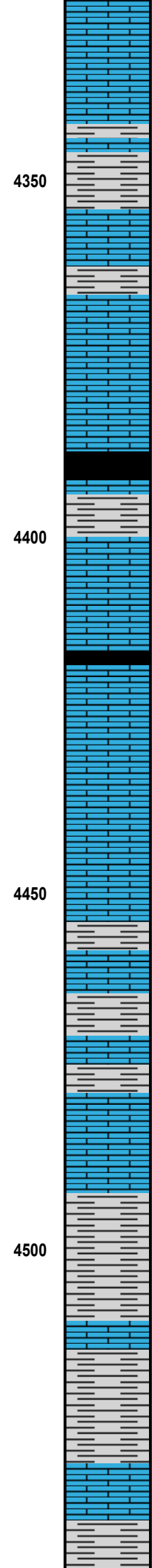
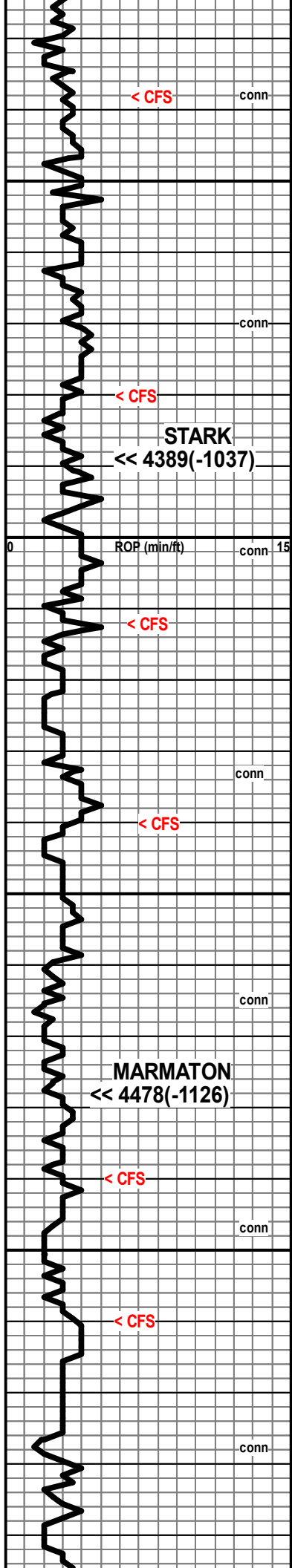
4100

LS, lt gy-tan, vf-fxln, arg, NV por

LS, crm-tan, f-vfxln, slty foss, rr P mold por, NS

Vis 57 Wt 9.1 Fil 6.4 Ph 11.5
 Chl 3,000 LCM 2#
 10/03/16 @ 4065





LS, tan-crm, f-vfxln, sub ool-foss, rr P ipart por, NS

LS, gy, micxln, NV por, dns

Shale, gy-brn & mar, sft

LS, tan-white, fxlIn, chky, ool, NV por, m hd

Shale, blk-dk gy

LS, tan-brn, vfxln, ool-sub ool, NV por, dns

LS, gy-micxln, NV por, dns

Shale, blk carb + few pc's pyr (4400 spl)

Shale, blk & lt gy

LS, crm-off wh, fxlIn, chky IP, foss & ool, P ipart & P ixln por, sft-brit, NS

Shale, blk carb + pyr

LS, crm, fxlIn, sltly foss, chky, P ixln por, NS

LS, gy-tan, vf-micxln, few foss frag, NV por, dns

LS, crm, fxlIn, chky IP, sltly foss, NV por

LS, gy, vf-micxln, sltly foss, NV por, dns

Shale, gy-blk & brn

LS, tan-brn, vf-micxln, NV por, dns

Shale, gy-blk & mar, silty

Shale & Slstt AA + LS, tan, vfxln, chky IP, dns, NV por

Most LS, crm-tan, vfxln, sltly foss, chky IP-dns, NV por + 1 pc, LS, crm-gy, fxlIn, chky, foss, P pp-vgy por, spt'd asph stn, NSFO, N odor

Shale, blk, brn & gn + Slstt, tan-gy

LS, lt gy-tan, vf-micxln, NV por, dns

Shale, blk, gy & mar

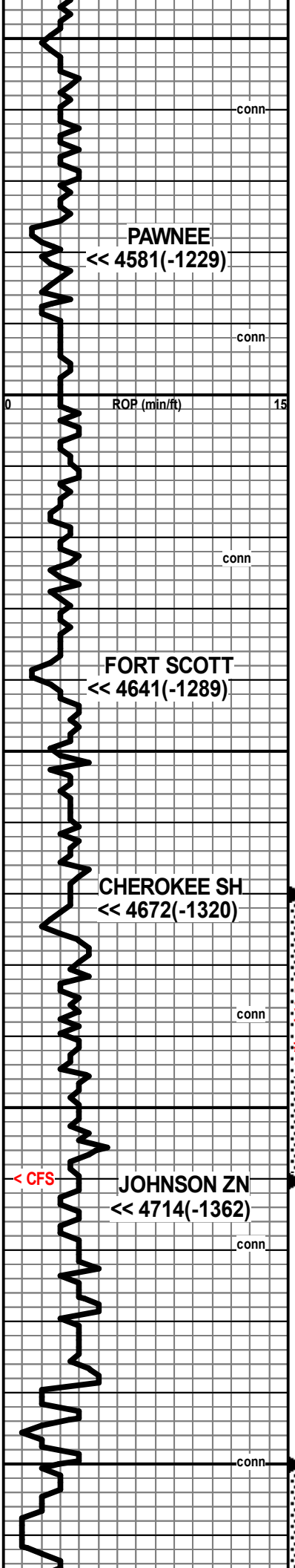
LS, tan-brn, vf-fxlIn, sub ool-foss, chky IP-dns, NV por

Shale, gy, blk, brn & mar

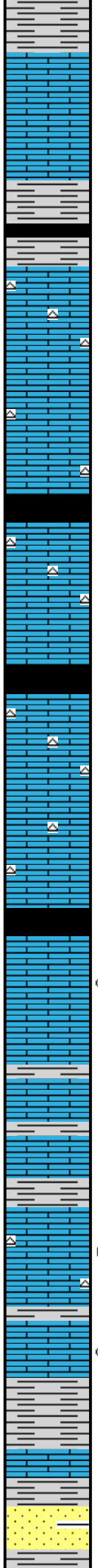
Vis 56 Wt 9.5

Jet & add premix after CFS @ 4380

Vis 67 Wt 9.4 Fil 8.8 PH 10.5
Chl 3,300 LCM 3#
10/04/16 @ 4440



4550
conn
PAWNEE
<< 4581(-1229)
conn
4600
ROP (min/ft) 0 15
4600
conn
FORT SCOTT
<< 4641(-1289)
4650
4650
4650
conn
D.S.T.#: 1
4700
< CFS
JOHNSON ZN
<< 4714(-1362)
conn
4750
conn
4750



LS, gy-tan, vfxln, slty foss, NV por, dns
LS, dk gy-brn, vfxln-micxln, mott, NV por, dns
Shale, blk carb (flood 4590 spl)
LS, tan-brn, vfxln, NV por, dns + Cht, tan-lt gy, trnsI-opq
LS AA + LS, tan-gy, f-vfxln, chky IP, sltly foss, NV por, hd
LS, dk gry-brn, micxln, chty + Cht, blk, opq, sltly foss
Shale, blk carb
LS, tan-crm, f-vfxln, chky IP, hd, NV por + Cht, lt gy, opq
LS, tan-crm, vfxln-micxln, sltly foss, NV por, dns
Shale, blk carb
LS, brn-gy, f-vfxln, ool, mott, NV por, hd + Cht, lt gy, opq
LS, crm-gy, f-mxln, sltly foss, chky IP, dns + Cht, gy, opq
LS, gy-tan, vfxln-micxln, sub ool & foss, mott, NV por + Cht, gy, opq-trnsI
Shale, blk carb
LS, lt gy-tan, vf-micxln, sltly foss, NV por, dns
LS, lt gy-wh, fxln, sub ool, P ixln por, SSFO, rr spt'd edge stn, V fnt odor
Shale, gy-blk + LS, tan-brn, vfxln, sltly foss, NV por, dns
LS, lt gy-brn, fxln, foss, chky IP, dns NV por + Shale, blk-gy
Shale, blk, dk gy, fis
LS, tan-gy, vf-fxln, sltly foss, NV por, rr spt'd edage asph stn, NSFO & LS, brn, micxln, NV por, dns + few pc's Cht, brn, opq
LS, tan-gy-brn, vf-micxln, sltly foss, most NV por, hd, 1 pc, P vgy por, SSFO(hvy), bleeding, spt'd stn
Shale, mar, gn, yel, dk gy
LS, brn, micxln, sltly foss, NV por, dns + Shale vcol
SS, wh-gy, f-vfgrn, sub rd-ang, mod-P sort, comp, P ig por, NS + abnt Shale, gy, mar, silty

Note: During short trip prior to DST#1, got stuck @ 3986. Spotted 60 bbl of oil to free.

Vis 63 Wt 9.2 Fil 7.2 PH 11
Chl 3,500 LCM 4#
10/05/16 @ 4710

Survey @ 4710 3 1/2 deg

DST#1 4670 - 4710
(Cherokee)
30 30 30 30

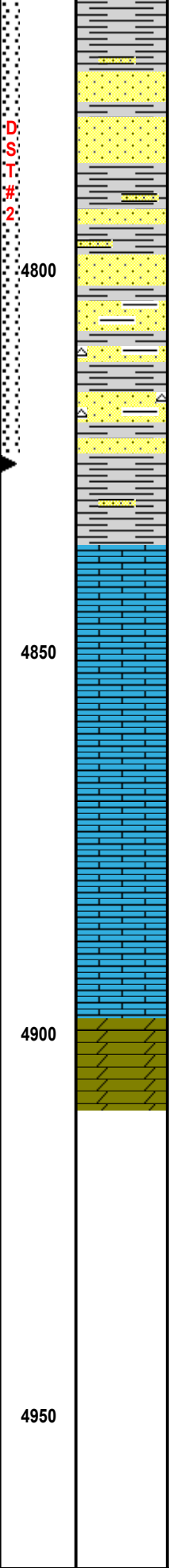
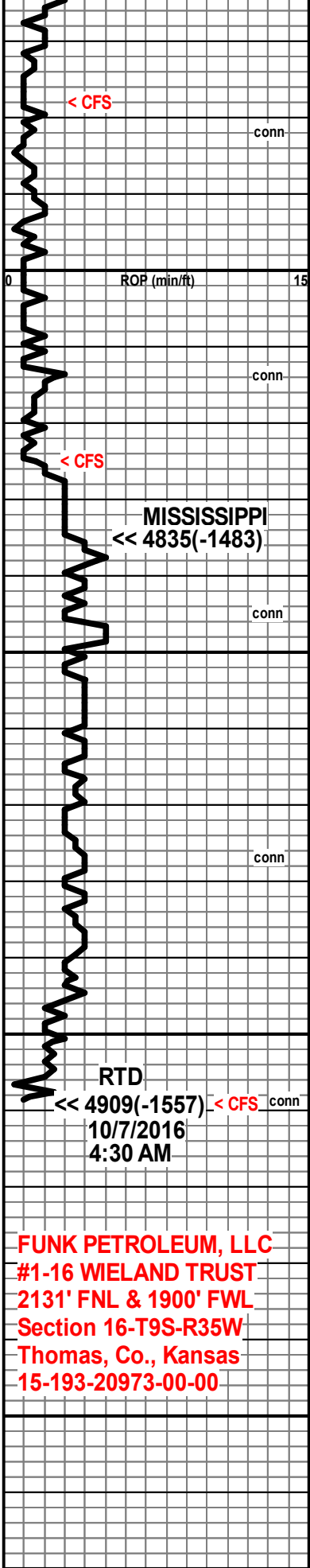
BLOW:
IF Surface blow died in 6 min
FF No blow
RECOVERY: 2' M w/ oil spots
IHP 2452
IFP 18 - 18
ISIP 24
FFP 18 - 18
FSIP 22
FHP 2297 123 deg F

Vis 68 Wt 9.2 Fil 9.6 PH 10
Chl 6,000 LCM 3#
10/06/16 @ 4710

Due to oil in mud system, all samples carrying good odor.

Survey @ 4825 3 1/2 deg

DST#2 4750 - 4825



SS, wh-lt gy, f-vfgrn, sub rd-ang, mod sort-P
 sort, calc, comp, P ig por, NS + abnt Shale,
 gy-blk & mar

SS, tan-clr qtz, f-mgrn (few crs), sub rd-ang,
 mod-P sort, fri, sltly calc & glauc, F ig por,
 GSFO, spt'd dk stn, N fluor

SS, gy-tan-clr qtz, f-vfgrn, sub rd-sub ang, mod
 sort, fr-comp, P ig por, NS, some very arg +
 Shale, mar, red & dk gy-blk

SS, wh-frm-clr qtz, f-vfgrn, sub ang, well sort,
 fri-comp, P ig por, NS + Cht, wh, opa, abnt
 Shale, gy, gn, red & mar

Most Shale, mar, gy, gn & yel + few clus SS,
 gy-wh, f-vfgrn, sub ang, well sort, comp, NV por

LS, crm-gy, fxln, sdy, sub ool, NV por

LS, crm-gy, f-vfxln, sdy, vf-fgrn, sub ool, chky,
 NV por

LS, lt gy, vfxln, sdy, fgrn, sltly foss + LS,
 crm-wh, fxln, sub ool-sdy, chky, NV por, sft

LS, crm-wh, f-mxln, gran, sub ool-foss, chky IP,
 m sft, NV por

LS AA + LS, brn, vfxln, sltly foss, NV por, dns

Dolo, brn-gy, f-mxln, foss, F ixln por, sft, NS

(Morrow)
 15 30 30 60
 BLOW:
 IF BOB 1 min
 ISI No return
 FF BOB 1 min
 FSI No return
 RECOVERY:
 124' MW (70%w 30%v)
 2576' W (100%w)
 2700' TOTAL FLUID (Chl 46,000)
 IHP 2292
 IFP 718 - 925
 ISIP 1095
 FFP 975 - 1093
 FSIP 1096
 FHP 2239 BHT 134 deg F

Vis 54 Wt 9.2 Fil 7.2 PH 11.5
 Chl 7,000 LCM 3#
 10/06/16 @ 4909
 Survey @ 4909 3 1/2 deg

FUNK PETROLEUM, LLC
#1-16 WIELAND TRUST
2131' FNL & 1900' FWL
Section 16-T9S-R35W
Thomas, Co., Kansas
15-193-20973-00-00

RTD
 << 4909(-1557) < CFS conn
 10/7/2016
 4:30 AM