



DRILL STEM TEST REPORT

Prepared For: **Funk Petroleum LLC**

2110 N 1184th St
Eudora, KS 66025

ATTN: Thomas Funk, Steve D

Wieland #1-16

16-9s-35 Thomas,KS

Start Date: 2016.10.05 @ 20:03:48

End Date: 2016.10.06 @ 02:09:48

Job Ticket #: 65518 DST #: 1

Trilobite Testing, Inc
PO Box 362 Hays, KS 67601
ph: 785-625-4778 fax: 785-625-5620

Printed: 2016.10.07 @ 14:20:20



**TRILOBITE
TESTING, INC**

DRILL STEM TEST REPORT

Funk Petroleum LLC

16-9s-35 Thomas,KS

2110 N 1184th St
Eudora, KS 66025

Wieland #1-16

Job Ticket: 65518

DST#: 1

ATTN: Thomas Funk, Steve D

Test Start: 2016.10.05 @ 20:03:48

GENERAL INFORMATION:

Formation: **Cherokee**

Deviated: No Whipstock: ft (KB)

Time Tool Opened: 22:02:18

Time Test Ended: 02:09:48

Test Type: Conventional Bottom Hole (Initial)

Tester: Brandon Turley

Unit No: 79

Interval: 4670.00 ft (KB) To 4710.00 ft (KB) (TVD)

Reference Elevations: 3352.00 ft (KB)

Total Depth: 4710.00 ft (KB) (TVD)

3347.00 ft (CF)

Hole Diameter: 7.88 inches Hole Condition: Good

KB to GR/CF: 5.00 ft

Serial #: 8166 Outside

Press@RunDepth: 18.72 psig @ 4671.00 ft (KB)

Capacity: 8000.00 psig

Start Date: 2016.10.05

End Date:

2016.10.06

Last Calib.: 2016.10.06

Start Time: 20:03:53

End Time:

02:09:47

Time On Btm: 2016.10.05 @ 21:59:48

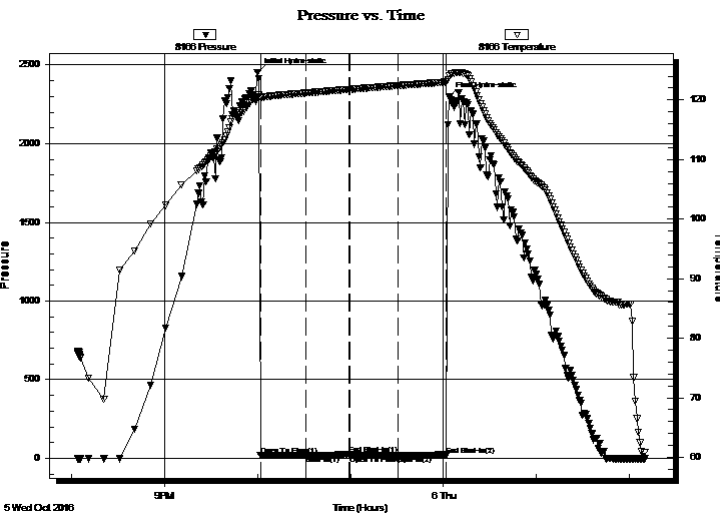
Time Off Btm: 2016.10.06 @ 00:03:48

TEST COMMENT: IF: Surface blow died in 6 min.

IS: No return.

FF: No blow.

FS: No return.



PRESSURE SUMMARY

| Time (Min.) | Pressure (psig) | Temp (deg F) | Annotation |
|-------------|-----------------|--------------|----------------------|
| 0 | 2452.82 | 120.51 | Initial Hydro-static |
| 3 | 18.11 | 120.44 | Open To Flow (1) |
| 31 | 18.83 | 121.17 | Shut-In(1) |
| 59 | 24.93 | 121.77 | End Shut-In(1) |
| 60 | 18.59 | 121.77 | Open To Flow (2) |
| 91 | 18.72 | 122.40 | Shut-In(2) |
| 122 | 22.93 | 123.01 | End Shut-In(2) |
| 124 | 2297.55 | 124.14 | Final Hydro-static |

Recovery

| Length (ft) | Description | Volume (bbl) |
|-------------|---------------------|--------------|
| 2.00 | mud oil spots 100%m | 0.01 |
| | | |
| | | |
| | | |
| | | |

Gas Rates

| Choke (inches) | Pressure (psig) | Gas Rate (Mcf/d) |
|----------------|-----------------|------------------|
| | | |



TRILOBITE TESTING, INC

DRILL STEM TEST REPORT

Funk Petroleum LLC

16-9s-35 Thomas, KS

2110 N 1184th St
Eudora, KS 66025

Wieland #1-16

Job Ticket: 65518

DST#: 1

ATTN: Thomas Funk, Steve D

Test Start: 2016.10.05 @ 20:03:48

GENERAL INFORMATION:

Formation: **Cherokee**

Deviated: No Whipstock: ft (KB)

Time Tool Opened: 22:02:18

Time Test Ended: 02:09:48

Test Type: Conventional Bottom Hole (Initial)

Tester: Brandon Turley

Unit No: 79

Interval: 4670.00 ft (KB) To 4710.00 ft (KB) (TVD)

Reference Elevations: 3352.00 ft (KB)

Total Depth: 4710.00 ft (KB) (TVD)

3347.00 ft (CF)

Hole Diameter: 7.88 inches Hole Condition: Good

KB to GR/CF: 5.00 ft

Serial #: 8875 Inside

Press@RunDepth: psig @ 4671.00 ft (KB)

Capacity: 8000.00 psig

Start Date: 2016.10.05 End Date: 2016.10.06

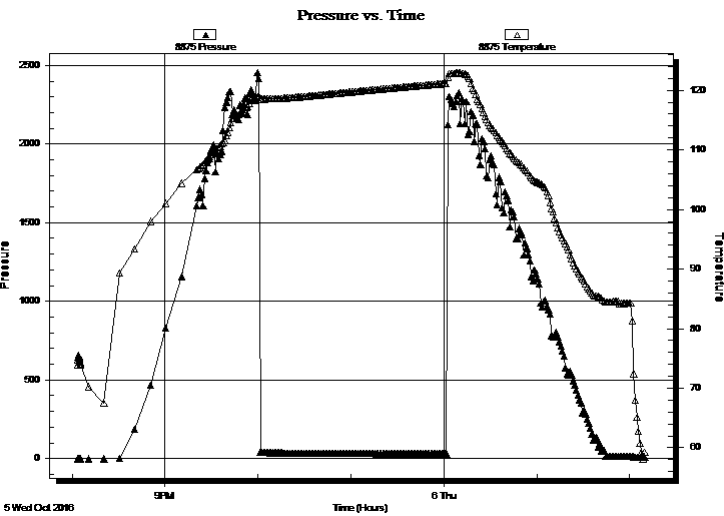
Last Calib.: 2016.10.06

Start Time: 20:03:40 End Time: 02:09:34

Time On Btm:

Time Off Btm:

TEST COMMENT: IF: Surface blow died in 6 min.
IS: No return.
FF: No blow.
FS: No return.



PRESSURE SUMMARY

| Time (Min.) | Pressure (psig) | Temp (deg F) | Annotation |
|-------------|-----------------|--------------|------------|
| | | | |

Recovery

Gas Rates

| Length (ft) | Description | Volume (bbl) |
|-------------|----------------------|--------------|
| 2.00 | mud oil spots 100% m | 0.01 |
| | | |
| | | |
| | | |
| | | |

| Choke (inches) | Pressure (psig) | Gas Rate (Mcf/d) |
|----------------|-----------------|------------------|
| | | |



**TRILOBITE
TESTING, INC**

DRILL STEM TEST REPORT

TOOL DIAGRAM

Funk Petroleum LLC

16-9s-35 Thomas,KS

2110 N 1184th St
Eudora, KS 66025

Wieland #1-16

Job Ticket: 65518

DST#: 1

ATTN: Thomas Funk, Steve D

Test Start: 2016.10.05 @ 20:03:48

Tool Information

| | | | | |
|---------------------------|--------------------|-----------------------|--------------------------------|------------------------------------|
| Drill Pipe: | Length: 4404.00 ft | Diameter: 3.80 inches | Volume: 61.78 bbl | Tool Weight: 2000.00 lb |
| Heavy Wt. Pipe: | Length: 0.00 ft | Diameter: 0.00 inches | Volume: 0.00 bbl | Weight set on Packer: 30000.00 lb |
| Drill Collar: | Length: 249.00 ft | Diameter: 2.25 inches | Volume: 1.22 bbl | Weight to Pull Loose: 70000.00 lb |
| | | | <u>Total Volume: 63.00 bbl</u> | Tool Chased 0.00 ft |
| Drill Pipe Above KB: | 10.00 ft | | | String Weight: Initial 60000.00 lb |
| Depth to Top Packer: | 4670.00 ft | | | Final 60000.00 lb |
| Depth to Bottom Packer: | ft | | | |
| Interval between Packers: | 40.00 ft | | | |
| Tool Length: | 67.00 ft | | | |
| Number of Packers: | 2 | Diameter: 6.75 inches | | |

Tool Comments:

| Tool Description | Length (ft) | Serial No. | Position | Depth (ft) | Accum. Lengths |
|------------------|-------------|------------|----------|------------|----------------|
|------------------|-------------|------------|----------|------------|----------------|

| | | | | | |
|-----------------|-------|------|---------|---------|-------------------------------|
| Stubb | 1.00 | | | 4644.00 | |
| Shut In Tool | 5.00 | | | 4649.00 | |
| Hydraulic tool | 5.00 | | | 4654.00 | |
| Jars | 5.00 | | | 4659.00 | |
| Safety Joint | 2.00 | | | 4661.00 | |
| Packer | 5.00 | | | 4666.00 | 27.00 Bottom Of Top Packer |
| Packer | 4.00 | | | 4670.00 | |
| Stubb | 1.00 | | | 4671.00 | |
| Recorder | 0.00 | 8875 | Inside | 4671.00 | |
| Recorder | 0.00 | 8166 | Outside | 4671.00 | |
| Perforations | 1.00 | | | 4672.00 | |
| Change Over Sub | 1.00 | | | 4673.00 | |
| Drill Pipe | 31.00 | | | 4704.00 | |
| Change Over Sub | 1.00 | | | 4705.00 | |
| Bullnose | 5.00 | | | 4710.00 | 40.00 Bottom Packers & Anchor |

Total Tool Length: 67.00



**TRILOBITE
TESTING, INC**

DRILL STEM TEST REPORT

FLUID SUMMARY

Funk Petroleum LLC

16-9s-35 Thomas,KS

2110 N 1184th St
Eudora, KS 66025

Wieland #1-16

Job Ticket: 65518

DST#: 1

ATTN: Thomas Funk, Steve D

Test Start: 2016.10.05 @ 20:03:48

Mud and Cushion Information

Mud Type: Gel Chem

Cushion Type:

Oil API:

0 deg API

Mud Weight: 9.00 lb/gal

Cushion Length:

ft

Water Salinity:

0 ppm

Viscosity: 63.00 sec/qt

Cushion Volume:

bbbl

Water Loss: 7.16 in³

Gas Cushion Type:

Resistivity: 0.00 ohm.m

Gas Cushion Pressure:

psig

Salinity: 3500.00 ppm

Filter Cake: 1.00 inches

Recovery Information

Recovery Table

| Length ft | Description | Volume bbl |
|--------------|---------------------|---------------|
| 2.00 | mud oil spots 100%m | 0.010 |

Total Length: 2.00 ft Total Volume: 0.010 bbl

Num Fluid Samples: 0

Num Gas Bombs: 0

Serial #:

Laboratory Name:

Laboratory Location:

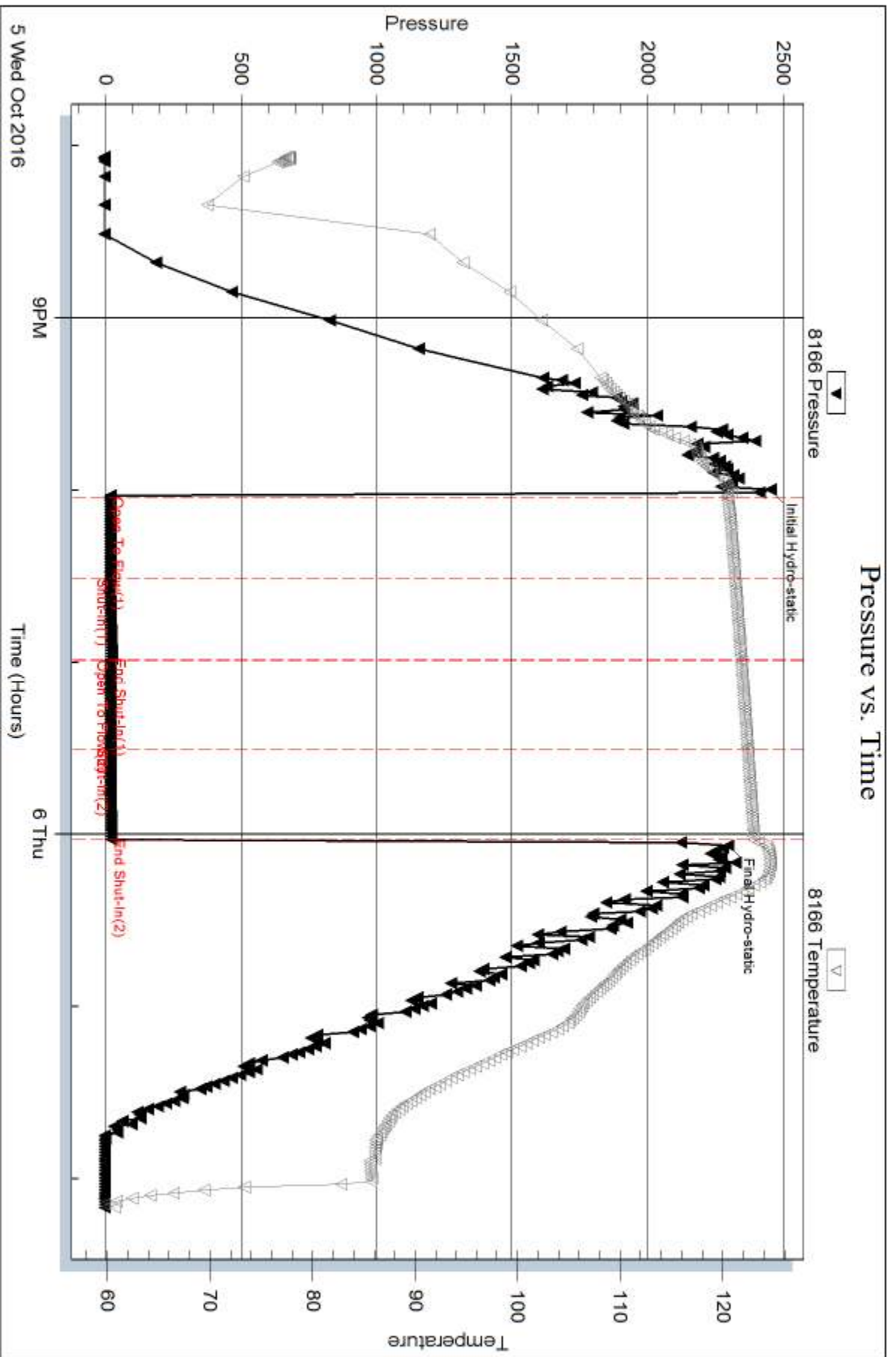
Recovery Comments:

Serial #: 8166

Outside Funk Petroleum LLC

Welland #1-16

DST Test Number: 1



Trilobite Testing, Inc

Ref. No: 65518

Printed: 2016.10.07 @ 14:20:21

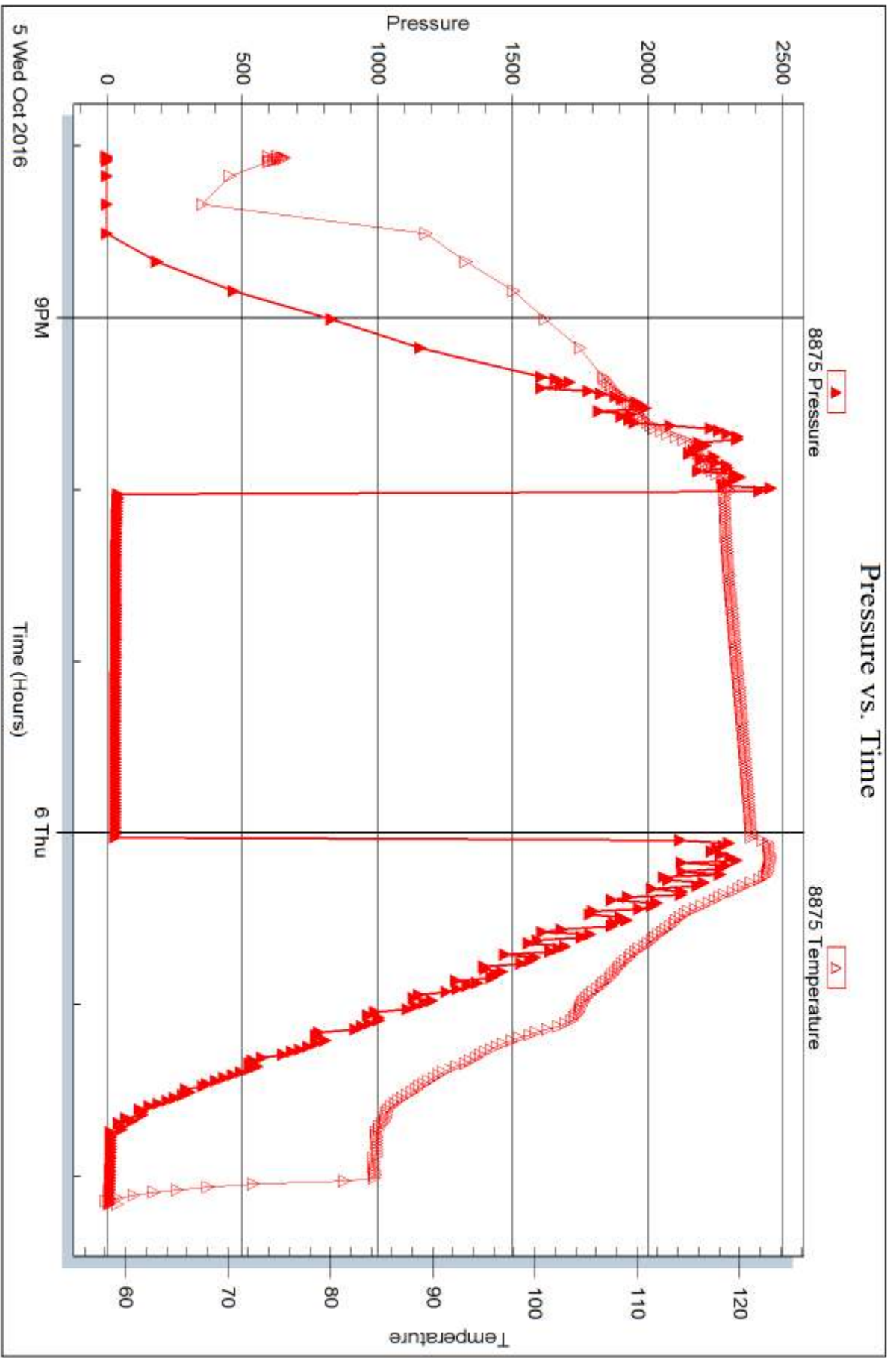
Serial #: 8875

Inside

Funk Petroleum LLC

Welland #1-16

DST Test Number: 1



Trilobite Testing, Inc

Ref. No: 65518

Printed: 2016.10.07 @ 14:20:21



DRILL STEM TEST REPORT

Prepared For: **Funk Petroleum LLC**

2110 N 1184th St
Eudora, KS 66025

ATTN: Thomas Funk, Steve D

Wieland #1-16

16-9s-35 Thomas,KS

Start Date: 2016.10.06 @ 13:36:03

End Date: 2016.10.06 @ 21:06:42

Job Ticket #: 64743 DST #: 2

Trilobite Testing, Inc
PO Box 362 Hays, KS 67601
ph: 785-625-4778 fax: 785-625-5620

Printed: 2016.10.07 @ 14:19:45

Funk Petroleum LLC
16-9s-35 Thomas,KS
Wieland #1-16
DST # 2
Cher sd
2016.10.06



TRILOBITE TESTING, INC

DRILL STEM TEST REPORT

Funk Petroleum LLC

16-9s-35 Thomas,KS

2110 N 1184th St
Eudora, KS 66025

Wieland #1-16

Job Ticket: 64743

DST#: 2

ATTN: Thomas Funk, Steve D

Test Start: 2016.10.06 @ 13:36:03

GENERAL INFORMATION:

Formation: **Cher sd**

Deviated: No Whipstock: ft (KB)

Time Tool Opened: 15:51:13

Time Test Ended: 21:06:42

Test Type: Conventional Bottom Hole (Reset)

Tester: Ray Schwager

Unit No: 77

Interval: 4750.00 ft (KB) To 4825.00 ft (KB) (TVD)

Reference Elevations: 3352.00 ft (KB)

Total Depth: 4825.00 ft (KB) (TVD)

3347.00 ft (CF)

Hole Diameter: 7.88 inches Hole Condition: Fair

KB to GR/CF: 5.00 ft

Serial #: 8018

Inside

Press@RunDepth: 1093.20 psig @ 4758.00 ft (KB)

Capacity: 8000.00 psig

Start Date: 2016.10.06

End Date:

2016.10.06

Last Calib.:

2016.10.06

Start Time: 13:36:03

End Time:

21:06:42

Time On Btm:

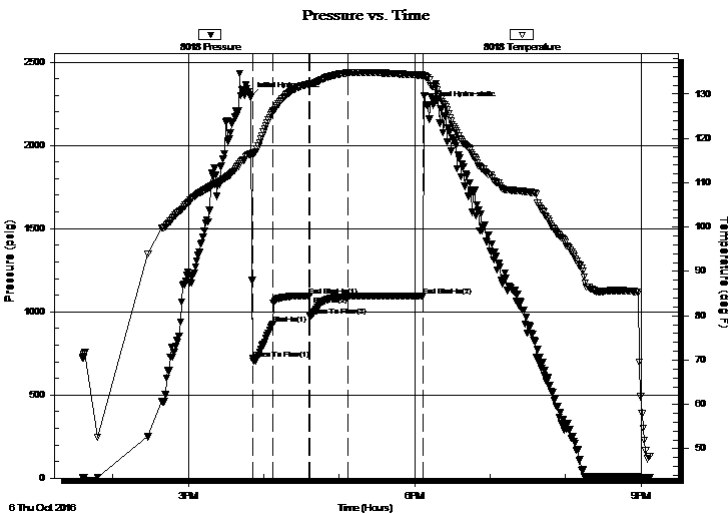
2016.10.06 @ 15:49:28

Time Off Btm:

2016.10.06 @ 18:10:27

TEST COMMENT: 15-IFP-strg bl in 1min
30-ISIP-no bl bk
30-FFP-strg bl in 1 min
60-FSIP-no bl bk

PRESSURE SUMMARY



| Time (Min.) | Pressure (psig) | Temp (deg F) | Annotation |
|-------------|-----------------|--------------|----------------------|
| 0 | 2292.32 | 116.61 | Initial Hydro-static |
| 2 | 718.16 | 116.61 | Open To Flow (1) |
| 18 | 925.34 | 125.98 | Shut-In(1) |
| 47 | 1095.76 | 132.30 | End Shut-In(1) |
| 47 | 975.15 | 132.27 | Open To Flow (2) |
| 78 | 1093.20 | 134.77 | Shut-In(2) |
| 138 | 1096.63 | 134.25 | End Shut-In(2) |
| 141 | 2239.63 | 133.67 | Final Hydro-static |

Recovery

| Length (ft) | Description | Volume (bbl) |
|-------------|-------------|--------------|
| 2576.00 | Water | 33.31 |
| 124.00 | MW 30%M70%W | 1.74 |
| | | |
| | | |
| | | |

* Recovery from multiple tests

Gas Rates

| Choke (inches) | Pressure (psig) | Gas Rate (Mcf/d) |
|----------------|-----------------|------------------|
| | | |



TRILOBITE TESTING, INC

DRILL STEM TEST REPORT

Funk Petroleum LLC

16-9s-35 Thomas,KS

2110 N 1184th St
Eudora, KS 66025

Wieland #1-16

Job Ticket: 64743

DST#: 2

ATTN: Thomas Funk, Steve D

Test Start: 2016.10.06 @ 13:36:03

GENERAL INFORMATION:

Formation: **Cher sd**

Deviated: No Whipstock: ft (KB)

Time Tool Opened: 15:51:13

Time Test Ended: 21:06:42

Test Type: Conventional Bottom Hole (Reset)

Tester: Ray Schwager

Unit No: 77

Interval: 4750.00 ft (KB) To 4825.00 ft (KB) (TVD)

Reference Elevations: 3352.00 ft (KB)

Total Depth: 4825.00 ft (KB) (TVD)

3347.00 ft (CF)

Hole Diameter: 7.88 inches Hole Condition: Fair

KB to GR/CF: 5.00 ft

Serial #: 8700 Outside

Press@RunDepth: psig @ 4758.00 ft (KB)

Capacity: 8000.00 psig

Start Date: 2016.10.06

End Date:

2016.10.06

Last Calib.:

2016.10.06

Start Time: 13:39:30

End Time:

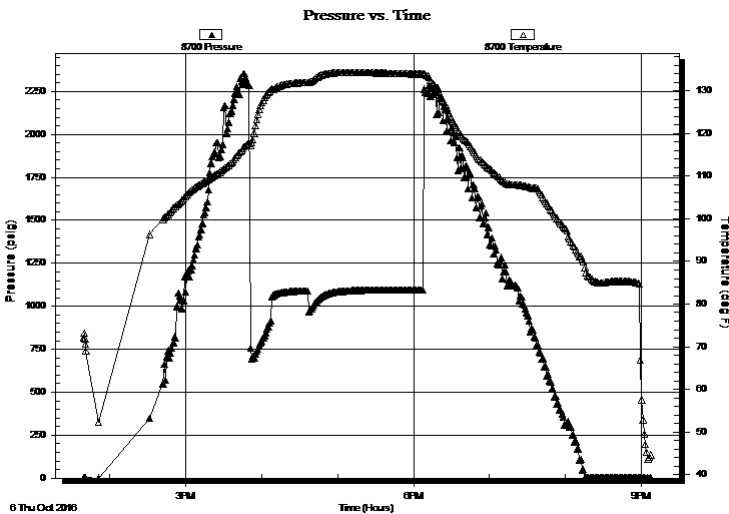
21:07:09

Time On Btm:

Time Off Btm:

TEST COMMENT: 15-IFP-strg bl in 1min
30-ISIP-no bl bk
30-FFP-strg bl in 1 min
60-FSIP-no bl bk

PRESSURE SUMMARY



| Time (Min.) | Pressure (psig) | Temp (deg F) | Annotation |
|-------------|-----------------|--------------|------------|
| | | | |
| | | | |
| | | | |
| | | | |

Recovery

| Length (ft) | Description | Volume (bbl) |
|-------------|-------------|--------------|
| 2576.00 | Water | 33.31 |
| 124.00 | MW 30%M70%W | 1.74 |
| | | |
| | | |
| | | |

Gas Rates

| Choke (inches) | Pressure (psig) | Gas Rate (Mcf/d) |
|----------------|-----------------|------------------|
| | | |

* Recovery from multiple tests



**TRILOBITE
TESTING, INC**

DRILL STEM TEST REPORT

TOOL DIAGRAM

Funk Petroleum LLC

16-9s-35 Thomas,KS

2110 N 1184th St
Eudora, KS 66025

Wieland #1-16

Job Ticket: 64743

DST#: 2

ATTN: Thomas Funk, Steve D

Test Start: 2016.10.06 @ 13:36:03

Tool Information

| | | | | |
|---------------------------|--------------------|-----------------------|--------------------------------|------------------------------------|
| Drill Pipe: | Length: 4436.00 ft | Diameter: 3.80 inches | Volume: 62.23 bbl | Tool Weight: 2000.00 lb |
| Heavy Wt. Pipe: | Length: 0.00 ft | Diameter: 0.00 inches | Volume: 0.00 bbl | Weight set on Packer: 25000.00 lb |
| Drill Collar: | Length: 310.00 ft | Diameter: 2.25 inches | Volume: 1.52 bbl | Weight to Pull Loose: 85000.00 lb |
| | | | <u>Total Volume: 63.75 bbl</u> | Tool Chased 0.00 ft |
| Drill Pipe Above KB: | 25.00 ft | | | String Weight: Initial 64000.00 lb |
| Depth to Top Packer: | 4750.00 ft | | | Final 74000.00 lb |
| Depth to Bottom Packer: | ft | | | |
| Interval between Packers: | 75.00 ft | | | |
| Tool Length: | 104.00 ft | | | |
| Number of Packers: | 2 | Diameter: 6.75 inches | | |

Tool Comments:

| Tool Description | Length (ft) | Serial No. | Position | Depth (ft) | Accum. Lengths |
|------------------|-------------|------------|----------|------------|----------------|
|------------------|-------------|------------|----------|------------|----------------|

| | | | | | |
|-----------------|-------|------|---------|---------|-------------------------------|
| Stubb | 1.00 | | | 4722.00 | |
| Shut In Tool | 5.00 | | | 4727.00 | |
| Hydraulic tool | 5.00 | | | 4732.00 | |
| Jars | 5.00 | | | 4737.00 | |
| Safety Joint | 3.00 | | | 4740.00 | |
| Packer | 5.00 | | | 4745.00 | 29.00 Bottom Of Top Packer |
| Packer | 5.00 | | | 4750.00 | |
| Stubb | 1.00 | | | 4751.00 | |
| Perforations | 7.00 | | | 4758.00 | |
| Recorder | 0.00 | 8018 | Inside | 4758.00 | |
| Recorder | 0.00 | 8700 | Outside | 4758.00 | |
| Change Over Sub | 1.00 | | | 4759.00 | |
| Drill Pipe | 62.00 | | | 4821.00 | |
| Change Over Sub | 1.00 | | | 4822.00 | |
| Bullnose | 3.00 | | | 4825.00 | 75.00 Bottom Packers & Anchor |

Total Tool Length: 104.00



**TRILOBITE
TESTING, INC**

DRILL STEM TEST REPORT

FLUID SUMMARY

Funk Petroleum LLC

16-9s-35 Thomas,KS

2110 N 1184th St
Eudora, KS 66025

Wieland #1-16

Job Ticket: 64743

DST#: 2

ATTN: Thomas Funk, Steve D

Test Start: 2016.10.06 @ 13:36:03

Mud and Cushion Information

Mud Type: Gel Chem

Cushion Type:

Oil API:

deg API

Mud Weight: 9.00 lb/gal

Cushion Length:

ft

Water Salinity:

46000 ppm

Viscosity: 68.00 sec/qt

Cushion Volume:

bbbl

Water Loss: 9.51 in³

Gas Cushion Type:

Resistivity: 0.00 ohm.m

Gas Cushion Pressure:

psig

Salinity: 6000.00 ppm

Filter Cake: 1.00 inches

Recovery Information

Recovery Table

| Length ft | Description | Volume bbl |
|--------------|-------------|---------------|
| 2576.00 | Water | 33.311 |
| 124.00 | MW 30%M70%W | 1.739 |

Total Length: 2700.00 ft Total Volume: 35.050 bbl

Num Fluid Samples: 0

Num Gas Bombs: 0

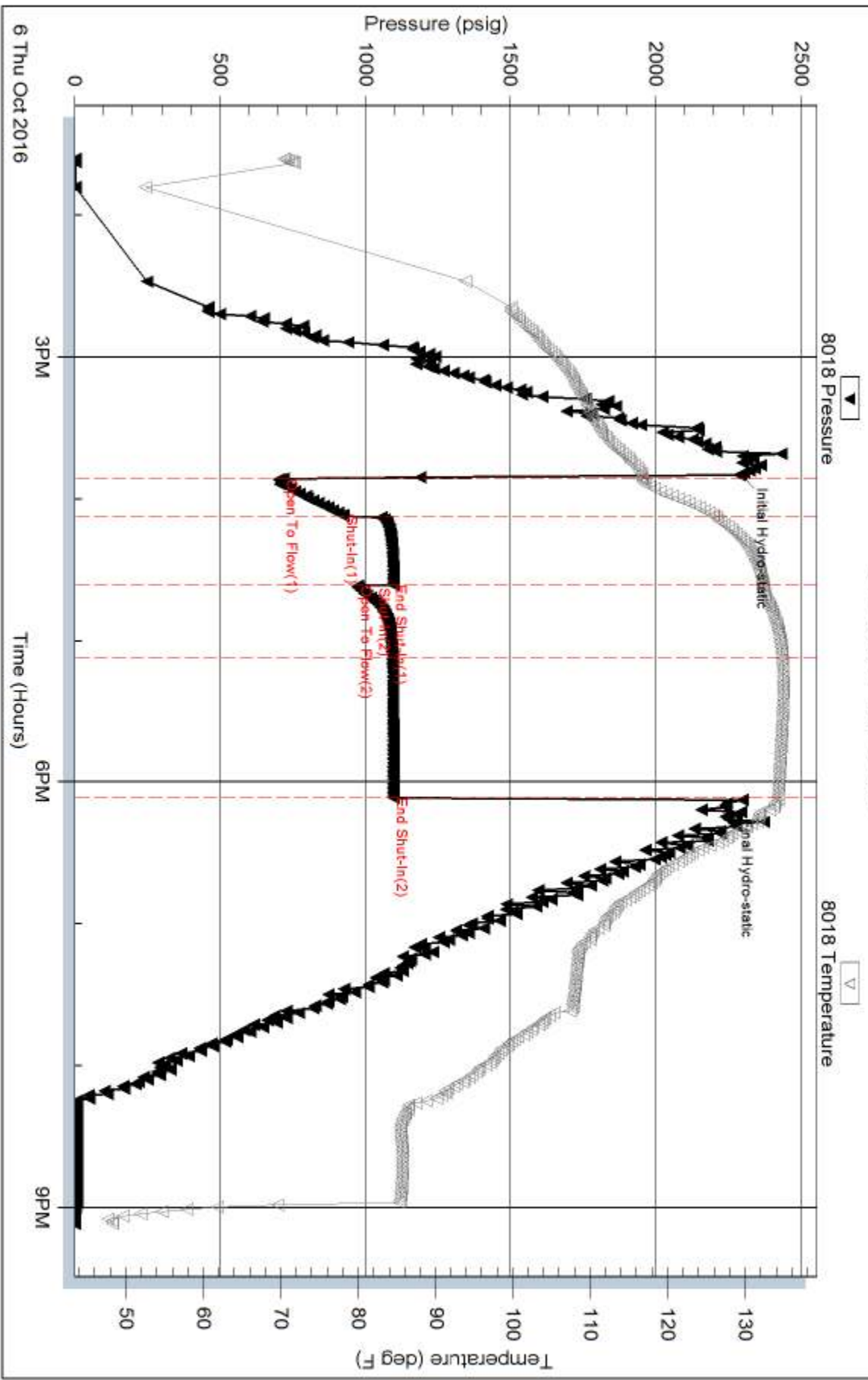
Serial #:

Laboratory Name:

Laboratory Location:

Recovery Comments: RW .16@70F

Pressure vs. Time

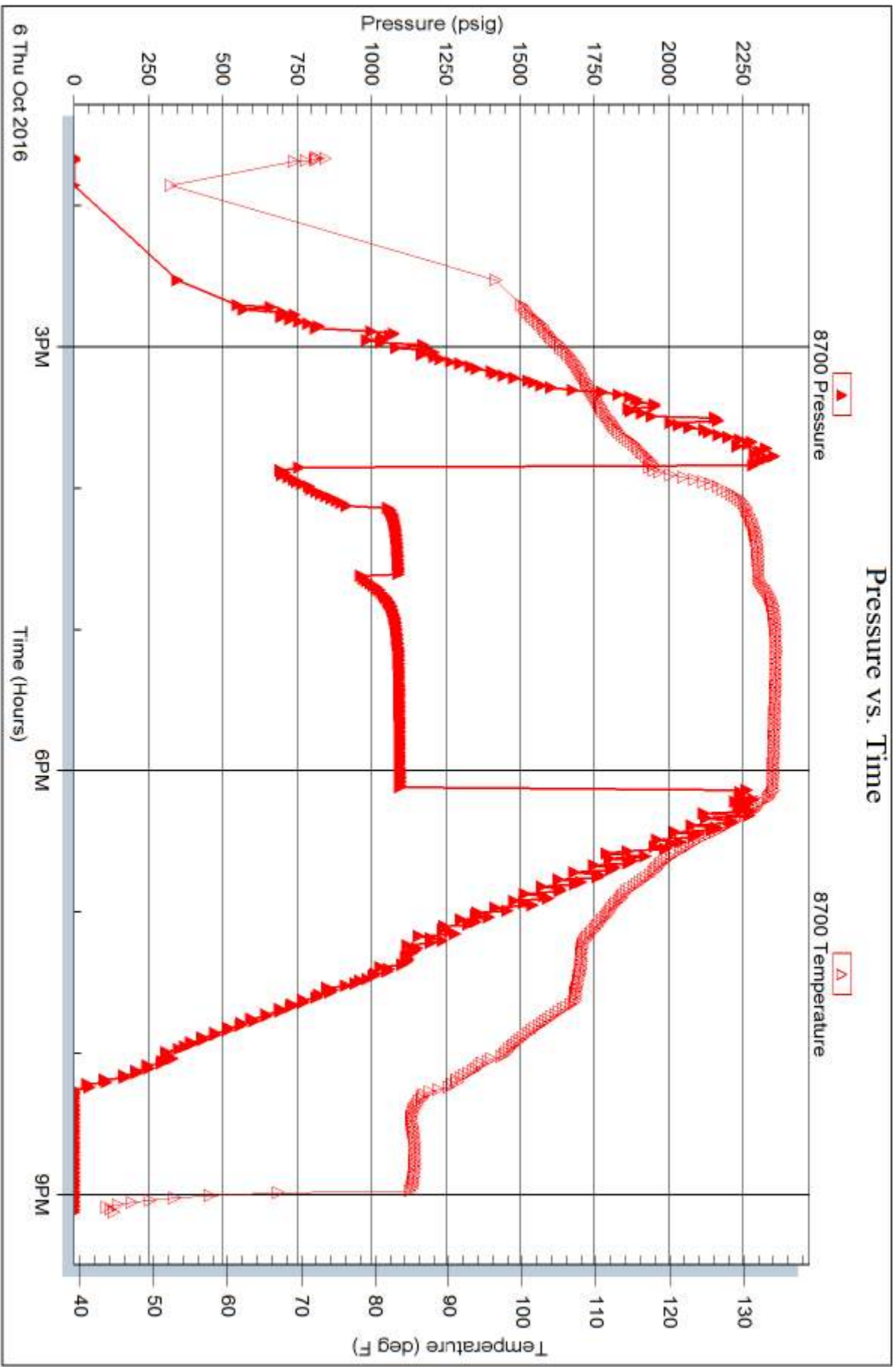


Serial #: 8700

Outside Funk Petroleum LLC

Welland #1-16

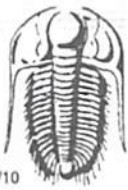
DST Test Number: 2



Triobite Testing, Inc

Ref. No: 64743

Printed: 2016.10.07 @ 14:19:46



TRILOBITE TESTING INC.

1515 Commerce Parkway • Hays, Kansas 67601

Test Ticket

NO. **65518**

Well Name & No. Weiland #1-10 Test No. 1 Date 10-5-16
 Company Funk Petroleum LLC Elevation 3352 KB 3347 GL
 Address 2110 N 1184th St, Eudora, KS 66025
 Co. Rep / Geo. Steve Davis Rig Murfin 7
 Location: Sec. 16 Twp. 9S Rge. 35 Co. Thomas State KS

Interval Tested 4670 4710 Zone Tested Cherokee
 Anchor Length 40 Drill Pipe Run 4404 Mud Wt. 9.2
 Top Packer Depth 4665 Drill Collars Run 249 Vis 63
 Bottom Packer Depth 4670 Wt. Pipe Run — WL 7.2
 Total Depth 4710 Chlorides 3500 ppm System LCM 4

Blow Description IF: Surface blow died in 6 min.
IS: No return.
FF: No blow.
FS: No return.

| Rec | Feet of | %gas | %oil | %water | %mud |
|----------|----------------------|------|------|------------|------|
| <u>2</u> | <u>mud oil spots</u> | | | <u>100</u> | |
| Rec | Feet of | %gas | %oil | %water | %mud |
| Rec | Feet of | %gas | %oil | %water | %mud |
| Rec | Feet of | %gas | %oil | %water | %mud |
| Rec | Feet of | %gas | %oil | %water | %mud |

Rec Total 2 BHT 123 Gravity — API RW — @ — °F Chlorides — ppm

(A) Initial Hydrostatic 2452 Test 1150 T-On Location 19:05
 (B) First Initial Flow 18 Jars 250 T-Started 20:03
 (C) First Final Flow 18 Safety Joint 75 T-Open 22:00
 (D) Initial Shut-In 24 Circ Sub NIL T-Pulled 00:00
 (E) Second Initial Flow 18 Hourly Standby _____ T-Out 2:11
 (F) Second Final Flow 18 Mileage 184-138 Comments _____
 (G) Final Shut-In 22 Sampler _____
 (H) Final Hydrostatic 2297 Straddle _____
 Shale Packer _____
 Shale Packer _____
 Extra Packer _____
 Extra Recorder _____
 Day Standby _____
 Accessibility _____

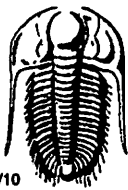
Initial Open 30
 Initial Shut-In 30
 Final Flow 30
 Final Shut-In 30

Sub Total 1613

MP/DST Disc't _____

Approved By [Signature] Our Representative [Signature]

TriLOBITE TESTING Inc. shall not be liable for damaged of any kind of the property or personnel of the one for whom a test is made, or for any loss suffered or sustained, directly or indirectly, through the use of its equipment, or its statements or opinion concerning the results of any test, tools lost or damaged in the hole shall be paid for at cost by the party for whom the test is made.



TRIOBITE TESTING INC.

1515 Commerce Parkway • Hays, Kansas 67601

Test Ticket

NO. 64743

Well Name & No. Wieland Trust 1-16 Test No. 2 Date 10-6-16
 Company Funk Petroleum LLC Elevation 3352 KB 3347 GL
 Address 2110 N. 1184th ST Eudora, Mo 66025
 Co. Rep / Geo. Steve Davis Rig MURFIN rig?
 Location: Sec. 16 Twp. 9^s Rge. 35^w Co. THOMAS State Ko

Interval Tested 4750-4825 Zone Tested MORROW SD.
 Anchor Length 75 Drill Pipe Run 4436 Mud Wt. 9.2
 Top Packer Depth 4745 Drill Collars Run 310 Vis 68
 Bottom Packer Depth 4750 Wt. Pipe Run - WL 9.6
 Total Depth 4825 Chlorides 6000 ppm System LCM 3#

Blow Description IFP - STRONG BLOW IN 1 MIN
ISIP - NO BLOW
FFP - STRONG BLOW IN 1 MIN
FSIP - NO BLOW

| Rec | Feet of | %gas | %oil | %water | %mud |
|-------------|--------------|------|------|-----------|-----------|
| <u>124</u> | <u>MW</u> | | | <u>70</u> | <u>30</u> |
| <u>2576</u> | <u>WATER</u> | | | | |
| Rec | Feet of | %gas | %oil | %water | %mud |
| Rec | Feet of | %gas | %oil | %water | %mud |
| Rec | Feet of | %gas | %oil | %water | %mud |

Rec Total 2700 BHT 134 Gravity - API RW .16 @ 70 °F Chlorides 6000 ppm

| | | |
|-------------------------------------|--|--|
| (A) Initial Hydrostatic <u>2292</u> | <input checked="" type="checkbox"/> Test <u>1150</u> | T-On Location <u>1305</u> |
| (B) First Initial Flow <u>718</u> | <input checked="" type="checkbox"/> Jars <u>250</u> | T-Started <u>1335</u> |
| (C) First Final Flow <u>925</u> | <input checked="" type="checkbox"/> Safety Joint <u>75</u> | T-Open <u>1550</u> |
| (D) Initial Shut-In <u>1095</u> | <input type="checkbox"/> Circ Sub | T-Pulled <u>1805</u> |
| (E) Second Initial Flow <u>975</u> | <input type="checkbox"/> Hourly Standby | T-Out <u>2106</u> |
| (F) Second Final Flow <u>1093</u> | <input checked="" type="checkbox"/> Mileage <u>138</u> | Comments <u>Released 10-7-16</u> |
| (G) Final Shut-In <u>1096</u> | <input type="checkbox"/> Sampler | <u>1030</u> |
| (H) Final Hydrostatic <u>2239</u> | <input type="checkbox"/> Straddle | <input type="checkbox"/> Ruined Shale Packer |

Initial Open 15
 Initial Shut-In 30
 Final Flow 30
 Final Shut-In 60

Sub Total 1613

MP/DST Disc't _____

Approved By _____ Our Representative Ray Schwager Thank you

Triobite Testing Inc. shall not be liable for damaged of any kind of the property or personnel of the one for whom a test is made, or for any loss suffered or sustained, directly or indirectly, through the use of its equipment, or its statements or opinion concerning the results of any test, tools lost or damaged in the hole shall be paid for at cost by the party for whom the test is made.