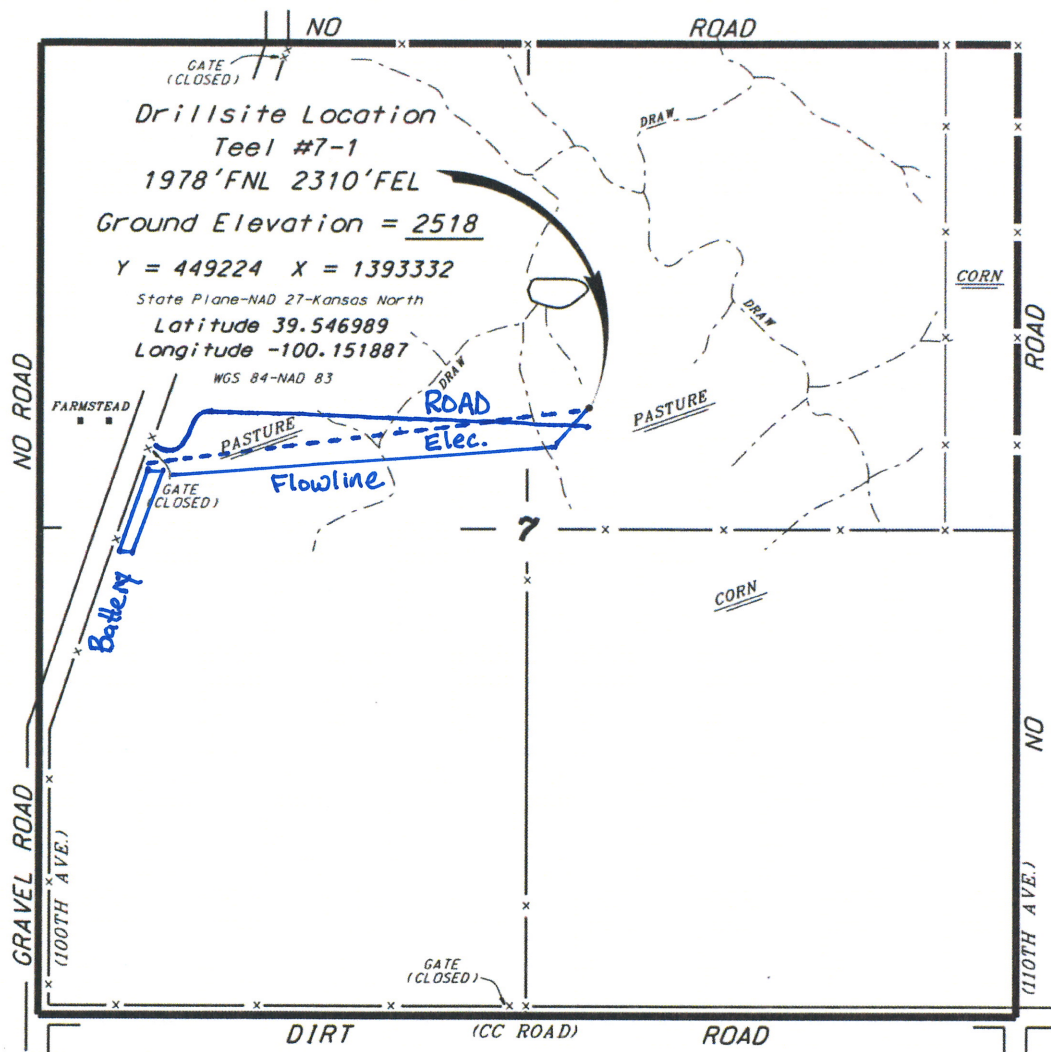


**IA OPERATING, INC.  
TEEL LEASE  
NE. 1/4, SECTION 7, T6S, R25W  
GRAHAM COUNTY, KANSAS**



**Drillsite Location**  
Teel #7-1  
1978'FNL 2310'FEL  
Ground Elevation = 2518  
Y = 449224 X = 1393332  
State Plane-NAD 27-Kansas North  
Latitude 39.546989  
Longitude -100.151887  
WGS 84-NAD 83

\*Ingress and egress to location as shown on this plat is per usage only and may not be legally opened for public use. Contact landowner, tenant and county road department for access.

- LEGEND**
- Well Location
  - ▭ Tank Battery Location
  - Pipeline Location
  - - - - Electric Line Location
  - ▬ Lease Road Location

\* Controlling data is based upon the best maps and photographs available to us and upon a regular section of land containing 640 acres.  
 \* Approximate section lines were determined using the normal standard of care of oilfield surveyors practicing in the state of Kansas. The section corners, which establish the precise section lines, were not necessarily located, and the exact location of the drillsite location in the section is not guaranteed. Therefore, the operator securing this service and accepting this plat and all other parties relying thereon agree to hold Central Kansas Oilfield Services, Inc., its officers and employees harmless from all losses, costs and expenses and said entities released from any liability from incidental or consequential damages.  
 \* Elevations derived from National Geodetic Vertical Datum.

Date November 14, 2016