



DIAMOND TESTING, LLC
 P.O. Box 157
HOISINGTON, KANSAS 67544
 (620) 653-7550 • (800) 542-7313
 LISTERA40DST2

Company Vess Oil Corporation Lease & Well No. Lister "A" No. 40
 Elevation 1383 KB Formation Simpson Sand Effective Pay Ft. Ticket No. F440
 Date 8-29-16 Sec. 32 Twp. 25S Range 5E County Butler State Kansas
 Test Approved By Roger L. Martin Diamond Representative Jake Fahrenbruch

Formation Test No. 2 Interval Tested from 2,476 ft. to 2,510 ft. Total Depth 2,510 ft.
 Packer Depth 2,471 ft. Size 6 3/4 in. Packer Depth ft. Size in.
 Packer Depth 2,476 ft. Size 6 3/4 in. Packer Depth ft. Size in.
 Depth of Selective Zone Set ft.

Top Recorder Depth (Inside) 2,477 ft. Recorder Number 5951 Cap. 5,000 psi.
 Bottom Recorder Depth (Outside) 2,478 ft. Recorder Number 5584 Cap. 5,000 psi.
 Below Straddle Recorder Depth ft. Recorder Number Cap. psi.

Drilling Contractor C & G Drilling Company - Rig 2 Drill Collar Length 240 ft. I.D. 2 1/4 in.
 Mud Type Chemical Viscosity 45 Weight Pipe Length ft. I.D. in.
 Weight 9.0 Water Loss 8.4 cc. Drill Pipe Length 2,208 ft. I.D. 3 1/2 in.
 Chlorides 900 P.P.M. Test Tool Length 28 ft. Tool Size 3 1/2-IF in.
 Jars: Make Sterling Serial Number 5 Anchor Length 34 ft. Size 4 1/2-FH in.
 Did Well Flow? No Reversed Out No Surface Choke Size 1 in. Bottom Choke Size 5/8 in.
 Main Hole Size 7 7/8 in. Tool Joint Size 4 1/2-XH in.

Blow: 1st Open: Strong blow increasing. Off bottom of bucket in 13 mins. No blow back during shut-in.

2nd Open: Blow increasing to 8 ins. No blow back during shut-in.

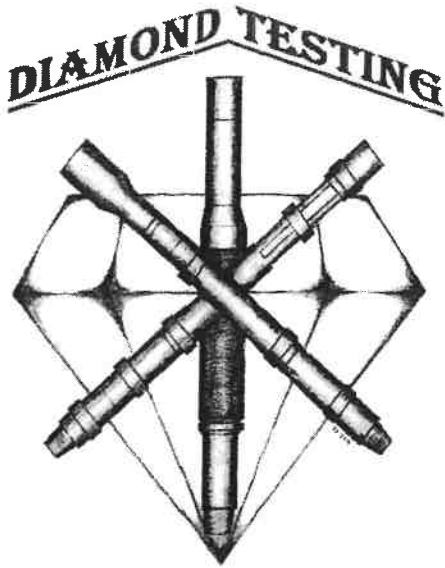
Recovered 3 ft. of free oil = .042690 bbls. (Grind out: 100%-oil)
 Recovered 150 ft. of slightly oil specked, muddy water = 1.641070 bbls. (Grind out: 1%-oil; 69%-water; 30%-mud)
 Recovered 187 ft. of mud cut water = .920040 bbls. (Grind out: 80%-water; 20%-mud) Chlorides: 18,500 Ppm PH: 8.0 RW: .34 @ 75°
 Recovered 340 ft. of TOTAL FLUID = 2.603800 bbls.
 Recovered ft. of
 Recovered ft. of
 Remarks Tool Sample Grind Out: 5%-oil; 35%-water; 60%-mud

Time Set Packer(s) 5:45 P.M. Time Started off Bottom 8:45 P.M. Maximum Temperature 105°
 Initial Hydrostatic Pressure.....(A) 1150 P.S.I.
 Initial Flow Period.....Minutes 30 (B) 36 P.S.I. to (C) 149 P.S.I.
 Initial Closed In Period.....Minutes 45 (D) 268 P.S.I.
 Final Flow Period.....Minutes 45 (E) 142 P.S.I. to (F) 172 P.S.I.
 Final Closed In Period.....Minutes 60 (G) 224 P.S.I.
 Final Hydrostatic Pressure.....(H) 1141 P.S.I.

DIAMOND TESTING GENERAL REPORT

Jake Fahrenbruch, Tester

Cell: (620) 282-8977 / Office: (800) 542-7313



TEST INFORMATION

Well Name	Lister "A" #40
Company Name	Vess Oil Corp
Formation	DST #2, Simpson Sand, 2476'-2510'
Test Type	Bottom-Hole w/J&J
Surface Location	Sec 32-25s-5e-Butler Co.-KS
KB Elevation (SL)	1383.000
Gauge Name	5951
Start Test Date	2016/08/29
Start Test Time	15:50:00
Final Test Date	2016/08/30
Final Test Time	00:19:00
Job Number	F440
Contact	Casey Coats
Site Contact	Roger Martin

TEST RESULTS

Initial flow, strong blow @ BOB in 13 minutes. No BB
 Final flow, blow increased to 8". No BB

TOTAL RECOVERED FLUID: 340'

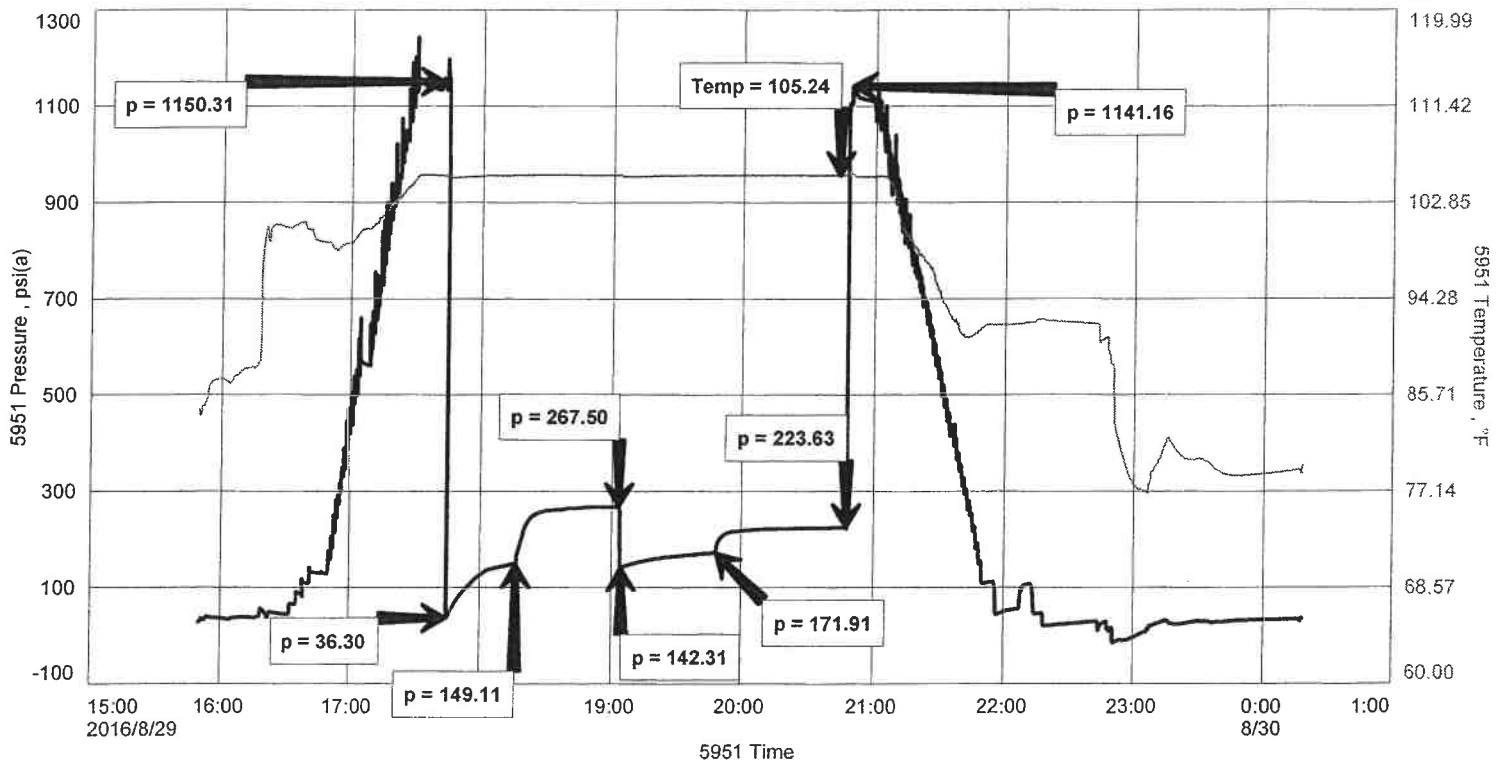
3'	Free Oil	100% oil
150'	SOSMW	1% oil, 69% wtr, 30% mud
187'	MCW	80% wtr, 20% mud

TOOL SAMPLE: SOCWM 5% oil, 35% wtr, 60% mud
 ----- Chlorides: 18,500 PPM ----- PH: 8.0 ----- RW: .34 @ 75 Deg F -----

Vess Oil Corp
 DST #2 Simpson Sand 2476'-2510'
 Start Test Date: 2016/08/29
 Final Test Date: 2016/08/29

Lister "A" #40
 Formation: Simpson Sand 2476'-2510'
 Pool: Infield
 Job Number: F440

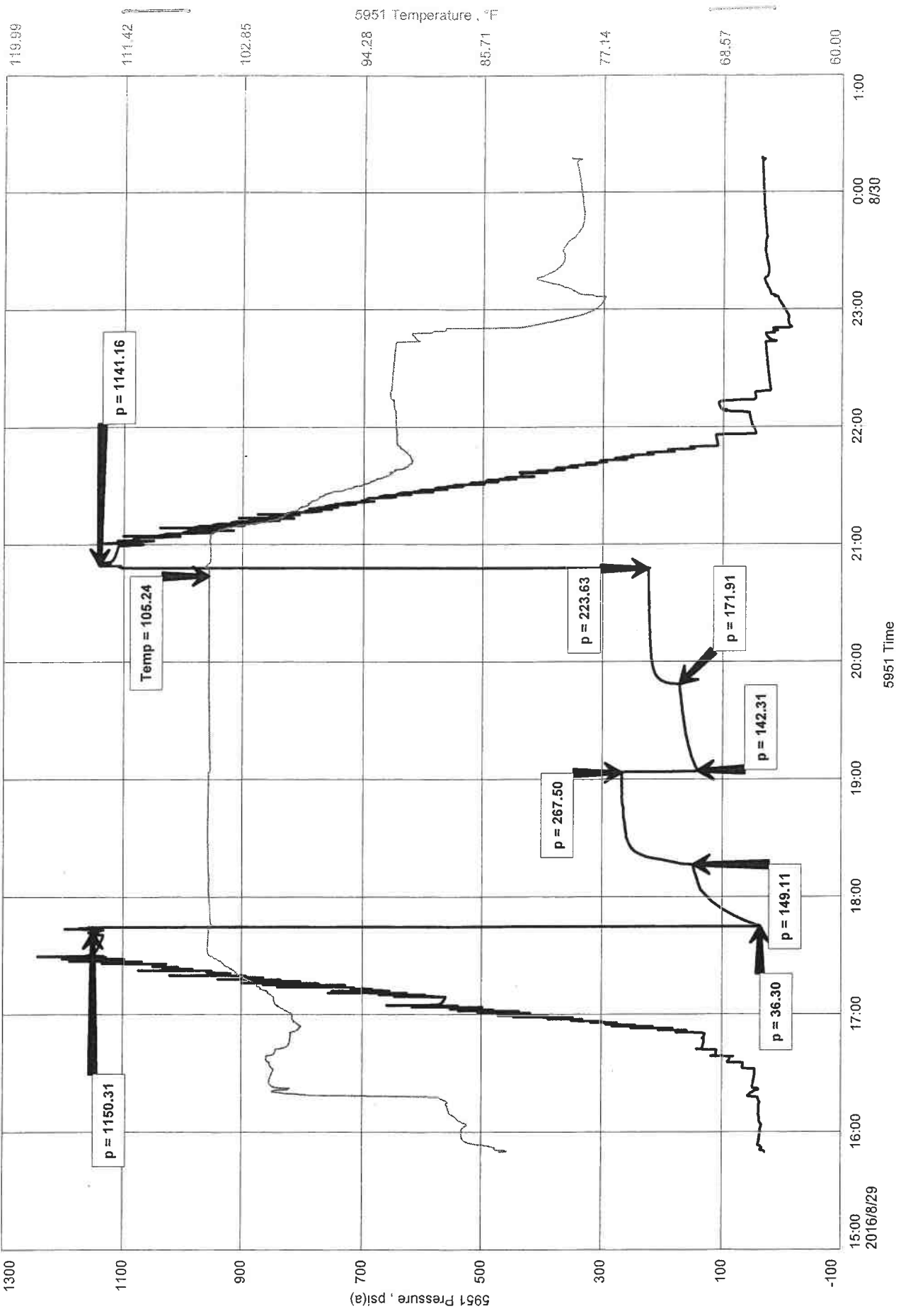
LISTER "A" #40



Vess Oil Corp
 DST #2 Simpson Sand 2476'-2510'
 Start Test Date: 2016/08/29
 Final Test Date: 2016/08/29

LISTER "A" #40

Formation: Simpson Sand 2476'-2510'
 Pool: Infield
 Job Number: F440





DIAMOND TESTING, LLC
P.O. Box 157
HOISINGTON, KANSAS 67544
(620) 653-7550 • (800) 542-7313
LISTERA40DST1

Company Vess Oil Corporation Lease & Well No. Lister "A" No. 40
Elevation 1383 KB Formation Viola Effective Pay Ft. Ticket No. F439
Date 8-28-16 Sec. 32 Twp. 25S Range 5E County Butler State Kansas
Test Approved By Roger L. Martin Diamond Representative Jake Fahrenbruch

Formation Test No. 1 Interval Tested from 2,441 ft. to 2,476 ft. Total Depth 2,476 ft.
Packer Depth 2,436 ft. Size 6 3/4 in. Packer Depth ft. Size in.
Packer Depth 2,441 ft. Size 6 3/4 in. Packer Depth ft. Size in.
Depth of Selective Zone Set ft.

Top Recorder Depth (Inside) 2,442 ft. Recorder Number 5951 Cap. 5,000 psi.
Bottom Recorder Depth (Outside) 2,443 ft. Recorder Number 5584 Cap. 5,000 psi.
Below Straddle Recorder Depth ft. Recorder Number Cap. psi.

Drilling Contractor C & G Drilling Company - Rig 2 Drill Collar Length 240 ft I.D. 2 1/4 in.
Mud Type Chemical Viscosity 49 Weight Pipe Length ft I.D. in.
Weight 9.2 Water Loss 8.4 cc. Drill Pipe Length 2,173 ft I.D. 3 1/2 in.
Chlorides 1,000 P.P.M. Test Tool Length 28 ft Tool Size 3 1/2-IF in.
Jars: Make Sterling Serial Number 5 Anchor Length 35 ft. Size 4 1/2-FH in.
Did Well Flow? No Reversed Out No Surface Choke Size 1 in. Bottom Choke Size 5/8 in.
Main Hole Size 7 7/8 in. Tool Joint Size 4 1/2-XH in.

Blow: 1st Open: Weak blow increasing to .875 ins. No blow back during shut-in.
2nd Open: No blow. No blow back during shut-in.

Recovered 10 ft. of free oil = .049200 bbls. (Grind out: 100%-oil) Gravity: 37.5 @ 60°
Recovered 30 ft. of oil cut mud = .147600 bbls. (Grind out: 10%-oil; 90%-mud)
Recovered 40 ft. of TOTAL FLUID = .196800 bbls.
Recovered ft. of
Recovered ft. of
Recovered ft. of
Remarks Tool Sample Grind Out: 25%-oil; 75%-mud

Time Set Packer(s) 5:30 P.M. Time Started off Bottom 9:00 P.M. Maximum Temperature 105°
Initial Hydrostatic Pressure.....(A) 1136 P.S.I.
Initial Flow Period.....Minutes 30 (B) 45 P.S.I. to (C) 60 P.S.I.
Initial Closed In Period.....Minutes 45 (D) 150 P.S.I.
Final Flow Period.....Minutes 45 (E) 60 P.S.I. to (F) 75 P.S.I.
Final Closed In Period.....Minutes 90 (G) 147 P.S.I.
Final Hydrostatic Pressure.....(H) 1134 P.S.I.

DIAMOND TESTING GENERAL REPORT

Jake Fahrenbruch, Tester

Cell: (620) 282-8977 / Office: (800) 542-7313



TEST INFORMATION

Well Name	Lister "A" #40
Company Name	Vess Oil Corp
Formation	DST #1, Viola, 2441'-2476'
Test Type	Bottom-Hole w/J&SJ
Surface Location	Sec 32-25s-5e-Butler Co.-KS
KB Elevation (SL)	1383.000
Gauge Name	5951
Start Test Date	2016/08/28
Start Test Time	15:30:00
Final Test Date	2016/08/28
Final Test Time	23:21:00
Job Number	F439
Contact	Casey Coats
Site Contact	Roger Martin

TEST RESULTS

Initial flow, weak blow, increased to .875".
Final flow, no blow.

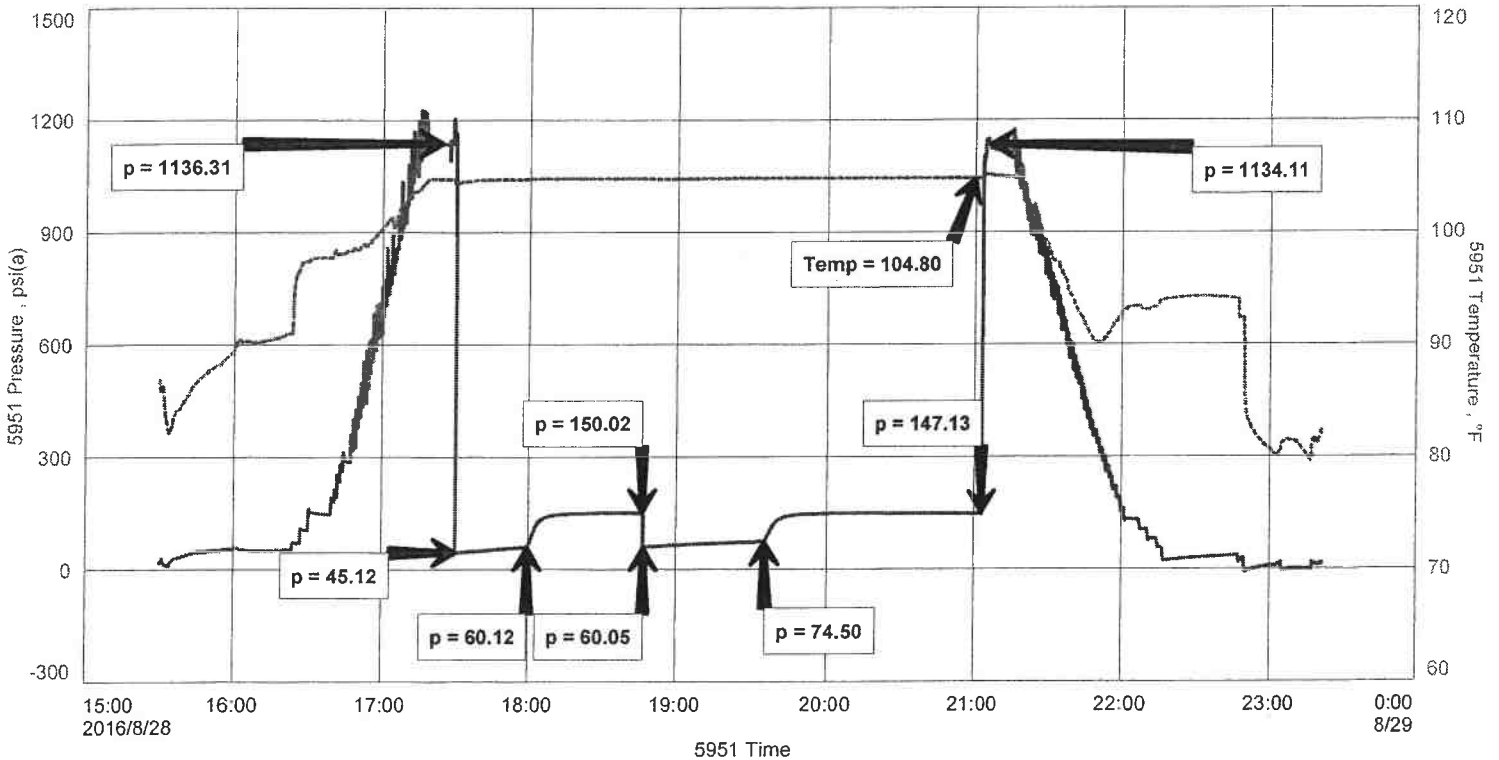
TOTAL RECOVERED FLUID: 40'

10' Free Oil 100% oil Gravity: 37.5 @ 60 Deg F
30' OCM 10% oil, 90% mud
Tool Sample: OM 25% oil, 75% mud

Vess Oil Corp
DST #1 Viola 2441'-2476'
Start Test Date: 2016/08/28
Final Test Date: 2016/08/28

Lister "A" #40
Formation: Viola 2441'-2476'
Pool: Infield
Job Number: F439

LISTER "A" #40



Start Test Date: 2016/08/28
Final Test Date: 2016/08/28

Formation: Viola 2441'-2476'
Pool: Infield
Job Number: F439

LISTER "A" #40

