



TEMPORARY ABANDONMENT WELL APPLICATION

OPERATOR: License# _____
 Name: _____
 Address 1: _____
 Address 2: _____
 City: _____ State: _____ Zip: _____ + _____
 Contact Person: _____
 Phone: (_____) _____
 Contact Person Email: _____
 Field Contact Person: _____
 Field Contact Person Phone: (_____) _____

API No. 15- _____
 Spot Description: _____
 _____ - _____ - _____ - _____ Sec. _____ Twp. _____ S. R. _____ E W
 _____ feet from N / S Line of Section
 _____ feet from E / W Line of Section
 GPS Location: Lat: _____, Long: _____
(e.g. xx.xxxxx) (e.g. -xxx.xxxxx)
 Datum: NAD27 NAD83 WGS84
 County: _____ Elevation: _____ GL KB
 Lease Name: _____ Well #: _____
 Well Type: (check one) Oil Gas OG WSW Other: _____
 SWD Permit #: _____ ENHR Permit #: _____
 Gas Storage Permit #: _____
 Spud Date: _____ Date Shut-In: _____

	Conductor	Surface	Production	Intermediate	Liner	Tubing
Size						
Setting Depth						
Amount of Cement						
Top of Cement						
Bottom of Cement						

Casing Fluid Level from Surface: _____ How Determined? _____ Date: _____
 Casing Squeeze(s): _____ to _____ w / _____ sacks of cement, _____ to _____ w / _____ sacks of cement. Date: _____
(top) (bottom) (top) (bottom)
 Do you have a valid Oil & Gas Lease? Yes No
 Depth and Type: Junk in Hole at _____ Tools in Hole at _____ Casing Leaks: Yes No Depth of casing leak(s): _____
(depth) (depth)
 Type Completion: ALT. I ALT. II Depth of: DV Tool: _____ w / _____ sacks of cement Port Collar: _____ w / _____ sack of cement
(depth) (depth)
 Packer Type: _____ Size: _____ Inch Set at: _____ Feet
 Total Depth: _____ Plug Back Depth: _____ Plug Back Method: _____

Geological Data:

Formation Name	Formation Top	Formation Base	Completion Information
1. _____	At: _____	to _____ Feet	Perforation Interval _____ to _____ Feet or Open Hole Interval _____ to _____ Feet
2. _____	At: _____	to _____ Feet	Perforation Interval _____ to _____ Feet or Open Hole Interval _____ to _____ Feet

UNDER PENALTY OF PERJURY I HEREBY ATTEST THAT THE INFORMATION CONTAINED HEREIN IS TRUE AND CORRECT TO THE BEST OF MY KNOWLEDGE

Submitted Electronically

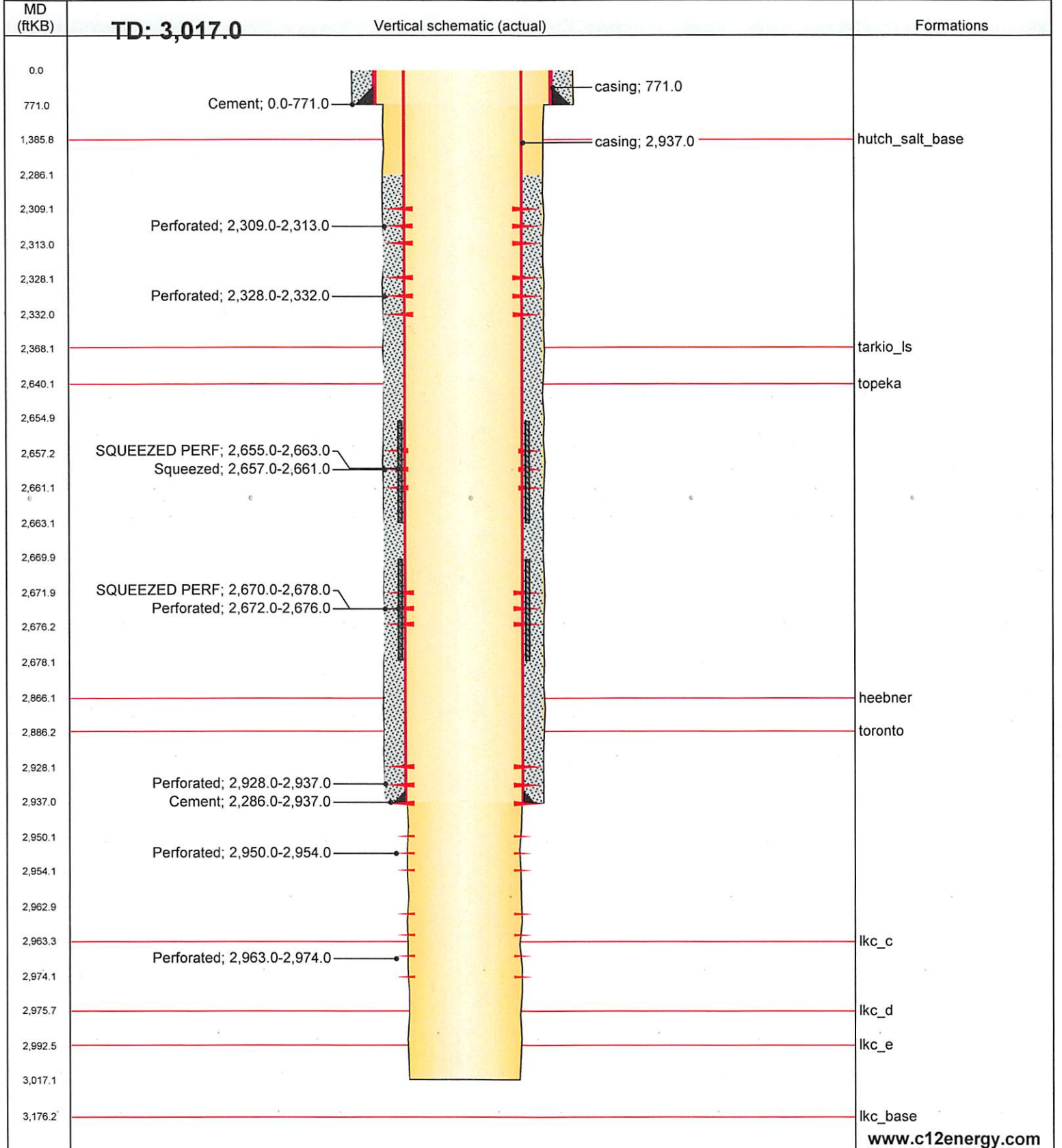
Do NOT Write in This Space - KCC USE ONLY	Date Tested: _____	Results: _____	Date Plugged: _____	Date Repaired: _____	Date Put Back in Service: _____
	Review Completed by: _____ Comments: _____				
TA Approved: <input type="checkbox"/> Yes <input type="checkbox"/> Denied Date: _____					

Mail to the Appropriate KCC Conservation Office:

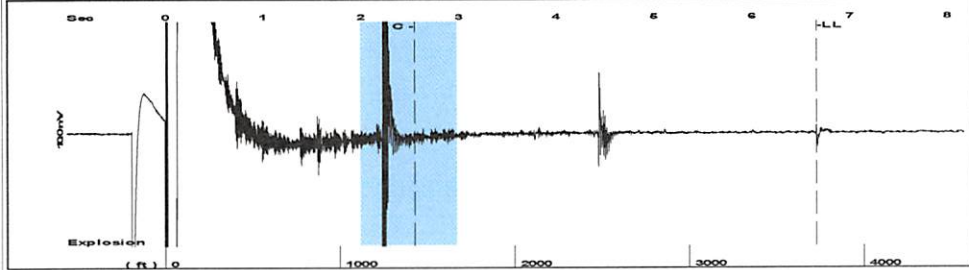
	KCC District Office #1 - 210 E. Frontview, Suite A, Dodge City, KS 67801	Phone 620.225.8888
	KCC District Office #2 - 3450 N. Rock Road, Building 600, Suite 601, Wichita, KS 67226	Phone 316.337.7400
	KCC District Office #3 - 1500 SW Seventh Steet, Chanute, KS 66720	Phone 620.432.2300
	KCC District Office #4 - 2301 E. 13th Street, Hays, KS 67601-2651	Phone 785.625.0550

API/UWI 15-167-07018	User Text 1 GLM Company	Operator C12: Kansas Oil, LLC	Well Status Pumping Oil	Orig KB Elev (ft) 1,782.02
Rig Release Date 7/11/1935	Abandon Date 1/1/1900	Latitude (°) 38° 48' 43.067" N	Longitude (°) 98° 50' 13.776" W	Surface Legal Location 14S 14W Sec 26 NE NE NE
Comment C12 Well Data Import				

Original Hole, 11/14/2016 4:16:58 PM

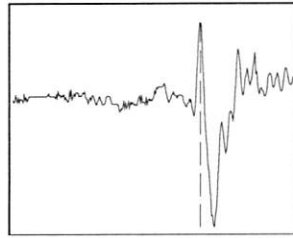
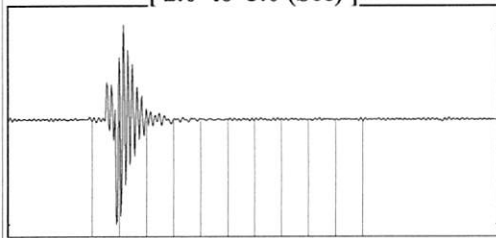


Group: J Boxberger Well: J Boxberger 4 (acquired on: 11/17/16 11:41:00)



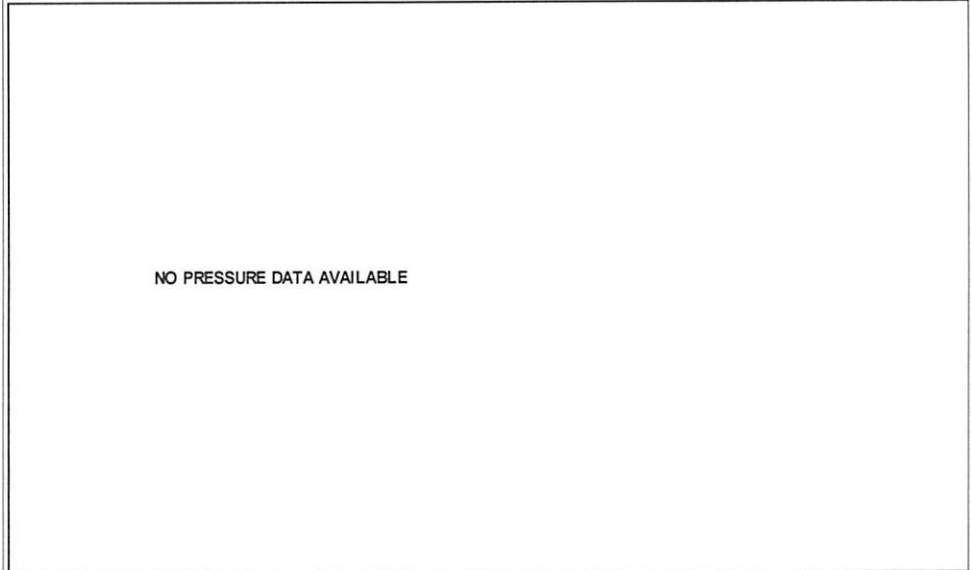
Filter Type High Pass Automatic Collar Count Yes Time 6.658 sec
 Manual Acoustic Velo 1119.13 ft/s Manual JTS/sec 18.0505 Joints 120.181 Jts
 Depth 3725.60 ft

[2.0 to 3.0 (Sec)]



Analysis Method: Automatic

Group: J Boxberger Well: J Boxberger 4 (acquired on: 11/17/16 11:41:00)



Change in Pressure 0.00 psi PT 15086
 Change in Time 0.00 min Range 0 - ? psi

Group: J Boxberger Well: J Boxberger 4 (acquired on: 11/17/16 11:41:00)

Production Current Potential
 Oil -*- BBL/D
 Water -*- BBL/D
 Gas -*- Mscf/D

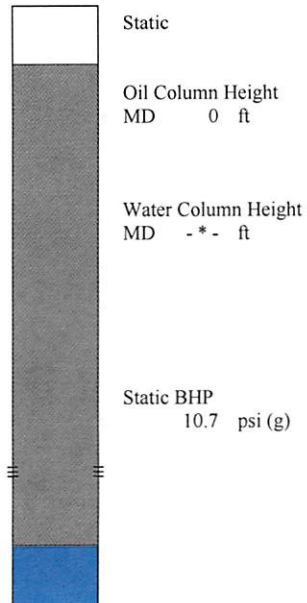
IPR Method Vogel
 PBHP/SBHP -*-
 Production Efficiency 0.0

Oil 40 deg.API
 Water 1.05 Sp.Gr.H2O
 Gas 0.87 Sp.Gr.AIR

Acoustic Velocity 1119.13 ft/s

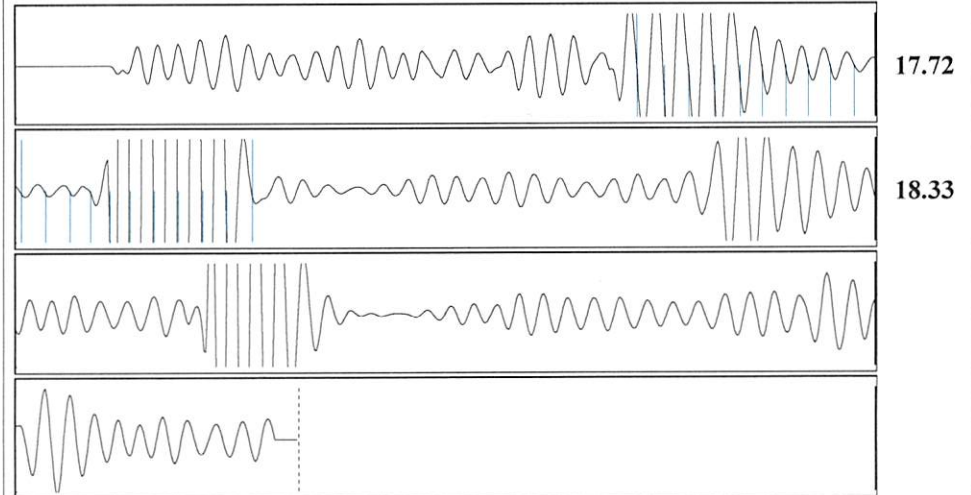
Casing Pressure 8.4 psi (g)
 Casing Pressure Buildup 0.7 psi
 Gas/Liquid Interface Pressure 11.1 psi (g)

Liquid Level Depth 3725.60 ft
 Tubing Intake Depth -*- ft
 Formation Depth 3166.70 ft



Acoustic Test

Group: J Boxberger Well: J Boxberger 4 (acquired on: 11/17/16 11:41:00)



Acoustic Velocity 1119.13 ft/s Joints counted 20
 Joints Per Second 18.0505 jts/sec Joints to liquid level 120.181
 Depth to liquid level 3725.6 ft Filter Width 16.0505 20.0505
 Automatic Collar Count Yes Time to 1st Collar 1.44 2.548

Conservation Division
District Office No. 4
2301 E. 13th Street
Hays, KS 67601-2651



Phone: 785-625-0550
Fax: 785-625-0564
<http://kcc.ks.gov/>

Jay Scott Emler, Chairman
Shari Feist Albrecht, Commissioner
Pat Apple, Commissioner

Sam Brownback, Governor

November 18, 2016

Parker Stevens
C12 Kansas Oil, LLC
1900 WAZEE ST.
SUITE 200
DENVER, CO 80202

Re: Temporary Abandonment
API 15-167-07018-00-01
J BOXBERGER 1
NE/4 Sec.26-14S-14W
Russell County, Kansas

Dear Parker Stevens:

"Your temporary abandonment (TA) application for the well listed above has been approved. In accordance with K.A.R. 82-3-111 the TA status of this well will expire 11/18/2017.

- * If you return this well to service or plug it, please notify the District Office.
- * If you sell this well you are required to file a Transfer of Operator form, T-1.
- * If the well will remain temporarily abandoned, you must submit a new TA application, CP-111, before 11/18/2017.

You may contact me at the number above if you have questions.

Very truly yours,

Richard Williams"