



TEMPORARY ABANDONMENT WELL APPLICATION

All blanks must be complete

OPERATOR: License# _____
Name: _____
Address 1: _____
Address 2: _____
City: _____ State: _____ Zip: _____ + _____
Contact Person: _____
Phone: (_____) _____
Contact Person Email: _____
Field Contact Person: _____
Field Contact Person Phone: (_____) _____

API No. 15- _____
Spot Description: _____
____ - ____ - ____ - ____ Sec. _____ Twp. _____ S. R. _____ E W
_____ feet from N / S Line of Section
_____ feet from E / W Line of Section
GPS Location: Lat: _____, Long: _____
(e.g. xx.xxxxx) (e.g. -xxx.xxxxx)
Datum: NAD27 NAD83 WGS84
County: _____ Elevation: _____ GL KB
Lease Name: _____ Well #: _____
Well Type: (check one) Oil Gas OG WSW Other: _____
 SWD Permit #: _____ ENHR Permit #: _____
 Gas Storage Permit #: _____
Spud Date: _____ Date Shut-In: _____

	Conductor	Surface	Production	Intermediate	Liner	Tubing
Size						
Setting Depth						
Amount of Cement						
Top of Cement						
Bottom of Cement						

Casing Fluid Level from Surface: _____ How Determined? _____ Date: _____
Casing Squeeze(s): _____ to _____ w / _____ sacks of cement, _____ to _____ w / _____ sacks of cement. Date: _____
(top) (bottom) (top) (bottom)
Do you have a valid Oil & Gas Lease? Yes No
Depth and Type: Junk in Hole at _____ (depth) Tools in Hole at _____ (depth) Casing Leaks: Yes No Depth of casing leak(s): _____
Type Completion: ALT. I ALT. II Depth of: DV Tool: _____ w / _____ sacks of cement Port Collar: _____ w / _____ sack of cement
(depth) (depth)
Packer Type: _____ Size: _____ Inch Set at: _____ Feet
Total Depth: _____ Plug Back Depth: _____ Plug Back Method: _____

Geological Data:

Formation Name	Formation Top	Formation Base	Completion Information
1. _____	At: _____	to _____ Feet	Perforation Interval _____ to _____ Feet or Open Hole Interval _____ to _____ Feet
2. _____	At: _____	to _____ Feet	Perforation Interval _____ to _____ Feet or Open Hole Interval _____ to _____ Feet

UNDER PENALTY OF PERJURY I HEREBY ATTEST THAT THE INFORMATION CONTAINED HEREIN IS TRUE AND CORRECT TO THE BEST OF MY KNOWLEDGE

Submitted Electronically

Do NOT Write in This Space - KCC USE ONLY

Date Tested: _____ Results: _____ Date Plugged: _____ Date Repaired: _____ Date Put Back in Service: _____

Review Completed by: _____ Comments: _____

TA Approved: Yes Denied Date: _____

Mail to the Appropriate KCC Conservation Office:

	KCC District Office #1 - 210 E. Frontview, Suite A, Dodge City, KS 67801	Phone 620.225.8888
	KCC District Office #2 - 3450 N. Rock Road, Building 600, Suite 601, Wichita, KS 67226	Phone 316.337.7400
	KCC District Office #3 - 1500 SW Seventh Steet, Chanute, KS 66720	Phone 620.432.2300
	KCC District Office #4 - 2301 E. 13th Street, Hays, KS 67601-2651	Phone 785.625.0550

General

Well ID 126044
 Well Bayne 4-5
 Company Sandridge
 Operator - * -
 Lease Name Bayne 4-5
 Elevation 1881.00 ft
 Production Method Other
 Dataset Description

Comment

Surface Unit

Manufacturer - * -
 Unit Class Conventional
 Unit API Number - * -
 Measured Stroke Length 100.000 in
 Rotation CW
 Counter Balance Effect (Weights Level) - * - Klb
 Weight Of Counter Weights 2000 lb

Prime Mover

Motor Type Electric
 Rated HP - * - HP
 Run Time 24 hr/day
 MFG/Comment - * -

Electric Motor Parameters

Rated Full Load AMPS - * -
 Rated Full Load RPM - * -
 Synchronous RPM 1200
 Voltage - * -
 Hertz 60
 Phase 3
 Power Consumption 5
 Power Demand 8 \$/KW

Tubulars

Tubing OD 2.375 in
 Casing OD 4.500 in
 Average Joint Length 31.700 ft
 Anchor Depth - * - ft
 Kelly Bushing 9.00 ft

Pump

Plunger Diameter - * - in
 Pump Intake Depth 5162.00 ft
 **Total Rod Length < Pump Depth

Polished Rod

Polished Rod Diameter - * - in

Rod String

	Top Taper	Taper 2	Taper 3	Taper 4	Taper 5	Taper 6
Rod Type	- * -	- * -	- * -	- * -	- * -	- * -
Rod Length	- * -	- * -	- * -	- * -	- * -	- * - ft
Rod Diameter	- * -	- * -	- * -	- * -	- * -	- * - in
Rod Weight	0.0	0.0	0.0	0.0	0.0	0.0 lb

Total Rod Length 0
 Total Rod Weight 0.00

Damp Up 0.05
 Damp Down 0.05

Conditions

Pressure

Static BHP 645.2 psi (g)
 Static BHP Method Acoustic
 Static BHP Date 11/04/2016

Producing BHP - * - psi (g)
 Producing BHP Method - * -
 Producing BHP Date - * -
 Formation Depth 5265.00 ft

Surface Producing Pressures

Tubing Pressure - * - psi (g)
 Casing Pressure 570.8 psi (g)

Casing Pressure Buildup

Change in Pressure -0.058 psi
 Over Change in Time 1.25 min

Production

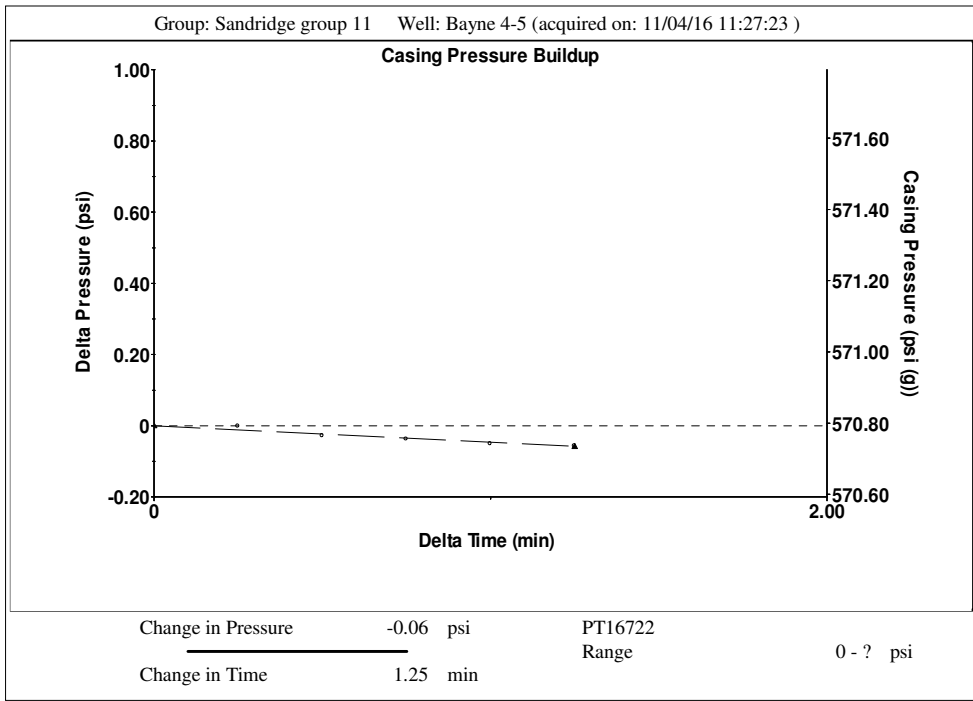
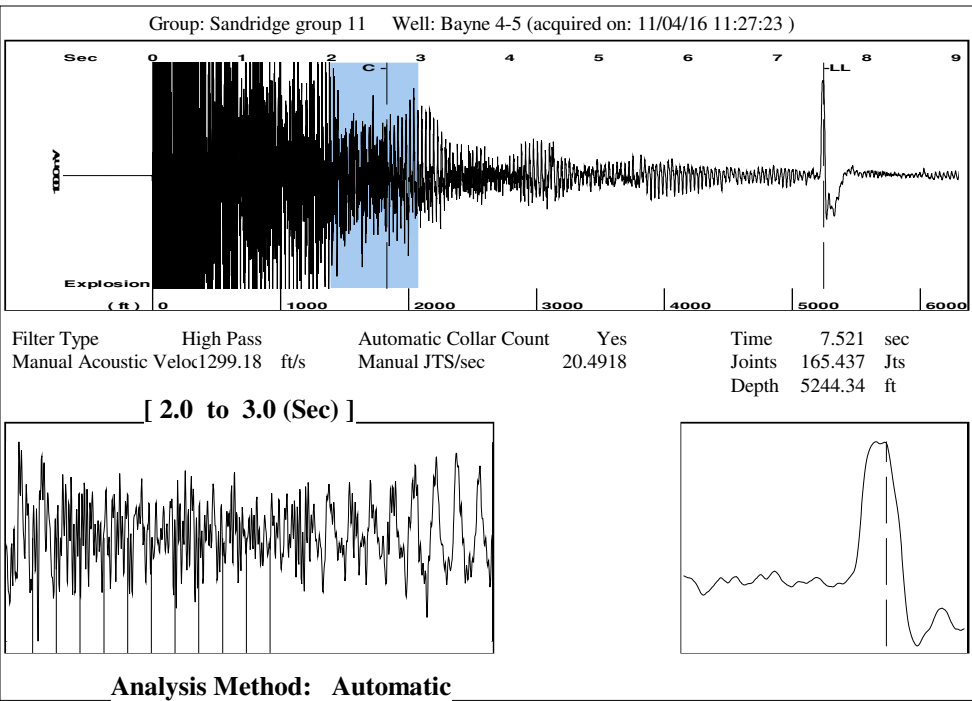
Oil Production 0 BBL/D
 Water Production 1 BBL/D
 Gas Production - * - Mscf/D
 Production Date 10/31/2016

Temperatures

Surface Temperature 70 deg F
 Bottomhole Temperature 150 deg F

Fluid Properties

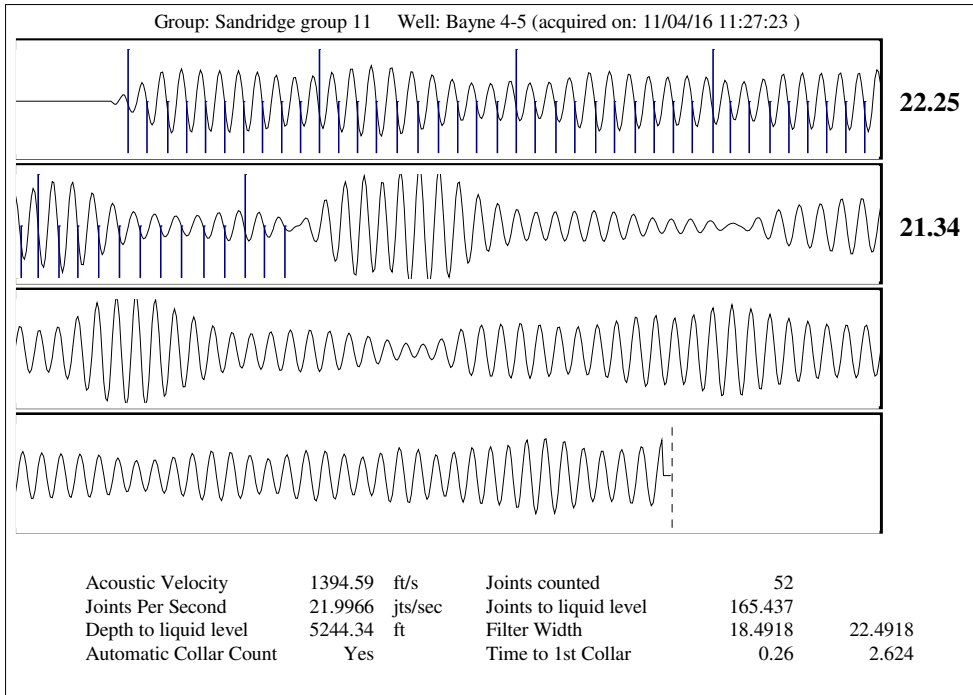
Oil API 40 deg.API
 Water Specific Gravity 1.05 Sp.Gr.H2O



Group: Sandridge group 11 Well: Bayne 4-5 (acquired on: 11/04/16 11:27:23)

Production	Potential	Casing Pressure	
Current	- * - BBL/D	570.8 psi (g)	
Oil 0	- * - BBL/D	Casing Pressure Buildup	
Water 1	- * - Mscf/D	-0.058 psi	
Gas - * -		1.25 min	Oil Column Height MD 0 ft
IPR Method	Vogel	Gas/Liquid Interface Pressure	Water Column Height MD 12 ft
PBHP/SBHP	- * -	639.9 psi (g)	
Production Efficiency	0.0	Liquid Level Depth	Static BHP 645.2 psi (g)
		5244.34 ft	
Oil 40 deg.API		Tubing Intake Depth	
Water 1.05 Sp.Gr.H2O		5162.00 ft	
Gas 0.60 Sp.Gr.AIR		Formation Depth	
		5265.00 ft	
Acoustic Velocity 1394.59 ft/s			

Bayne 4-5



Conservation Division
District Office No. 1
210 E. Frontview, Suite A
Dodge City, KS 67801



Phone: 620-225-8888
Fax: 620-225-8885
<http://kcc.ks.gov/>

Jay Scott Emler, Chairman
Shari Feist Albrecht, Commissioner
Pat Apple, Commissioner

Sam Brownback, Governor

November 15, 2016

Wanda Ledbetter
SandRidge Exploration and Production LLC
123 ROBERT S. KERR AVE
OKLAHOMA CITY, OK 73102-6406

Re: Temporary Abandonment
API 15-033-20396-00-00
BAYNE 4-5
SE/4 Sec.05-33S-19W
Comanche County, Kansas

Dear Wanda Ledbetter:

"Your temporary abandonment (TA) application for the well listed above has been approved. In accordance with K.A.R. 82-3-111 the TA status of this well will expire 11/15/2017.

- * If you return this well to service or plug it, please notify the District Office.
- * If you sell this well you are required to file a Transfer of Operator form, T-1.
- * If the well will remain temporarily abandoned, you must submit a new TA application, CP-111, before 11/15/2017.

You may contact me at the number above if you have questions.

Very truly yours,

Michael Maier"