



# TEMPORARY ABANDONMENT WELL APPLICATION

OPERATOR: License# \_\_\_\_\_  
 Name: \_\_\_\_\_  
 Address 1: \_\_\_\_\_  
 Address 2: \_\_\_\_\_  
 City: \_\_\_\_\_ State: \_\_\_\_\_ Zip: \_\_\_\_\_ + \_\_\_\_\_  
 Contact Person: \_\_\_\_\_  
 Phone: ( \_\_\_\_\_ ) \_\_\_\_\_  
 Contact Person Email: \_\_\_\_\_  
 Field Contact Person: \_\_\_\_\_  
 Field Contact Person Phone: ( \_\_\_\_\_ ) \_\_\_\_\_

API No. 15- \_\_\_\_\_  
 Spot Description: \_\_\_\_\_  
 \_\_\_\_\_ - \_\_\_\_\_ - \_\_\_\_\_ - \_\_\_\_\_ Sec. \_\_\_\_\_ Twp. \_\_\_\_\_ S. R. \_\_\_\_\_  E  W  
 \_\_\_\_\_ feet from  N /  S Line of Section  
 \_\_\_\_\_ feet from  E /  W Line of Section  
 GPS Location: Lat: \_\_\_\_\_, Long: \_\_\_\_\_  
(e.g. xx.xxxxx) (e.g. -xxx.xxxxx)  
 Datum:  NAD27  NAD83  WGS84  
 County: \_\_\_\_\_ Elevation: \_\_\_\_\_  GL  KB  
 Lease Name: \_\_\_\_\_ Well #: \_\_\_\_\_  
 Well Type: (check one)  Oil  Gas  OG  WSW  Other: \_\_\_\_\_  
 SWD Permit #: \_\_\_\_\_  ENHR Permit #: \_\_\_\_\_  
 Gas Storage Permit #: \_\_\_\_\_  
 Spud Date: \_\_\_\_\_ Date Shut-In: \_\_\_\_\_

	Conductor	Surface	Production	Intermediate	Liner	Tubing
Size						
Setting Depth						
Amount of Cement						
Top of Cement						
Bottom of Cement						

Casing Fluid Level from Surface: \_\_\_\_\_ How Determined? \_\_\_\_\_ Date: \_\_\_\_\_  
 Casing Squeeze(s): \_\_\_\_\_ to \_\_\_\_\_ w / \_\_\_\_\_ sacks of cement, \_\_\_\_\_ to \_\_\_\_\_ w / \_\_\_\_\_ sacks of cement. Date: \_\_\_\_\_  
(top) (bottom) (top) (bottom)  
 Do you have a valid Oil & Gas Lease?  Yes  No  
 Depth and Type:  Junk in Hole at \_\_\_\_\_  Tools in Hole at \_\_\_\_\_ Casing Leaks:  Yes  No Depth of casing leak(s): \_\_\_\_\_  
(depth) (depth)  
 Type Completion:  ALT. I  ALT. II Depth of:  DV Tool: \_\_\_\_\_ w / \_\_\_\_\_ sacks of cement  Port Collar: \_\_\_\_\_ w / \_\_\_\_\_ sack of cement  
(depth) (depth)  
 Packer Type: \_\_\_\_\_ Size: \_\_\_\_\_ Inch Set at: \_\_\_\_\_ Feet  
 Total Depth: \_\_\_\_\_ Plug Back Depth: \_\_\_\_\_ Plug Back Method: \_\_\_\_\_

**Geological Data:**

Formation Name	Formation Top	Formation Base	Completion Information
1. _____	At: _____	to _____ Feet	Perforation Interval _____ to _____ Feet or Open Hole Interval _____ to _____ Feet
2. _____	At: _____	to _____ Feet	Perforation Interval _____ to _____ Feet or Open Hole Interval _____ to _____ Feet

UNDER PENALTY OF PERJURY I HEREBY ATTEST THAT THE INFORMATION CONTAINED HEREIN IS TRUE AND CORRECT TO THE BEST OF MY KNOWLEDGE

Submitted Electronically

<b>Do NOT Write in This Space - KCC USE ONLY</b>	Date Tested: _____	Results: _____	Date Plugged: _____	Date Repaired: _____	Date Put Back in Service: _____
	Review Completed by: _____ Comments: _____				
TA Approved: <input type="checkbox"/> Yes <input type="checkbox"/> Denied Date: _____					

**Mail to the Appropriate KCC Conservation Office:**

	KCC District Office #1 - 210 E. Frontview, Suite A, Dodge City, KS 67801	Phone 620.225.8888
	KCC District Office #2 - 3450 N. Rock Road, Building 600, Suite 601, Wichita, KS 67226	Phone 316.337.7400
	KCC District Office #3 - 1500 SW Seventh Steet, Chanute, KS 66720	Phone 620.432.2300
	KCC District Office #4 - 2301 E. 13th Street, Hays, KS 67601-2651	Phone 785.625.0550

**General**

Well ID 124508  
 Well Lillian 3206 1-31H  
 Company Sandridge  
 Operator - \* -  
 Lease Name Lillian 3206 1-31H  
 Elevation 1383.00 ft  
 Production Method Other  
 Dataset Description  
 Shot one

Comment

**Surface Unit**

Manufacturer - \* -  
 Unit Class Conventional  
 Unit API Number - \* -  
 Measured Stroke Length - \* - in  
 Rotation CW  
 Counter Balance Effect (Weights Level) - \* - Klb  
 Weight Of Counter Weights 2000 lb

**Prime Mover**

Motor Type Electric  
 Rated HP - \* - HP  
 Run Time 24 hr/day  
 MFG/Comment - \* -

**Electric Motor Parameters**

Rated Full Load AMPS - \* -  
 Rated Full Load RPM - \* -  
 Synchronous RPM 1200  
 Voltage - \* -  
 Hertz 60  
 Phase 3  
 Power Consumption 5  
 Power Demand 8 \$/KW

**Tubulars**

Tubing OD 2.875 in  
 Casing OD 7.000 in  
 Average Joint Length 31.700 ft  
 Anchor Depth - \* - ft  
 Kelly Bushing 20.00 ft

**Pump**

Plunger Diameter - \* - in  
 Pump Intake Depth 4506.00 ft  
 \*\*Total Rod Length < Pump Depth

**Polished Rod**

Polished Rod Diameter - \* - in

**Rod String**

	Top Taper	Taper 2	Taper 3	Taper 4	Taper 5	Taper 6
Rod Type	- * -	- * -	- * -	- * -	- * -	- * -
Rod Length	- * -	- * -	- * -	- * -	- * -	- * - ft
Rod Diameter	- * -	- * -	- * -	- * -	- * -	- * - in
Rod Weight	0.0	0.0	0.0	0.0	0.0	0.0 lb

Total Rod Length 0  
 Total Rod Weight 0.00

Damp Up 0.04506  
 Damp Down 0.04506

**Conditions**

**Pressure**

Static BHP 1312.1 psi (g)  
 Static BHP Method Acoustic  
 Static BHP Date 11/02/2016  
 Producing BHP - \* - psi (g)  
 Producing BHP Method - \* -  
 Producing BHP Date - \* -  
 Formation Depth 4930.00 ft

**Production**

Oil Production 0 BBL/D  
 Water Production 1 BBL/D  
 Gas Production - \* - Mscf/D  
 Production Date 10/31/2016

**Temperatures**

Surface Temperature 70 deg F  
 Bottomhole Temperature 150 deg F

**Surface Producing Pressures**

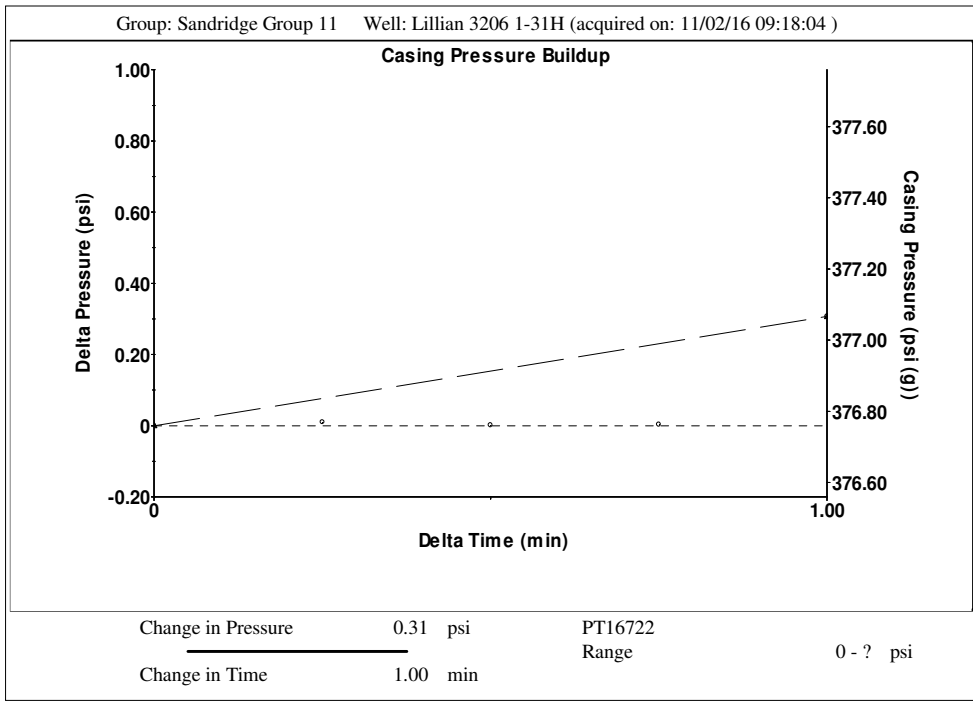
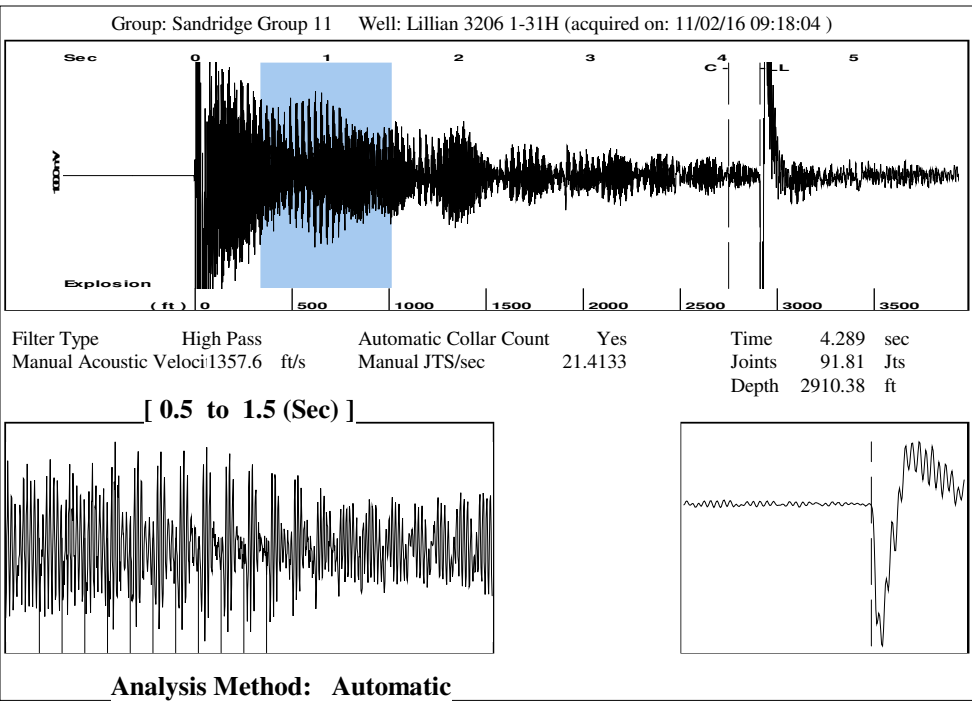
Tubing Pressure - \* - psi (g)  
 Casing Pressure 376.8 psi (g)

**Fluid Properties**

Oil API 40 deg.API  
 Water Specific Gravity 1.05 Sp.Gr.H2O

**Casing Pressure Buildup**

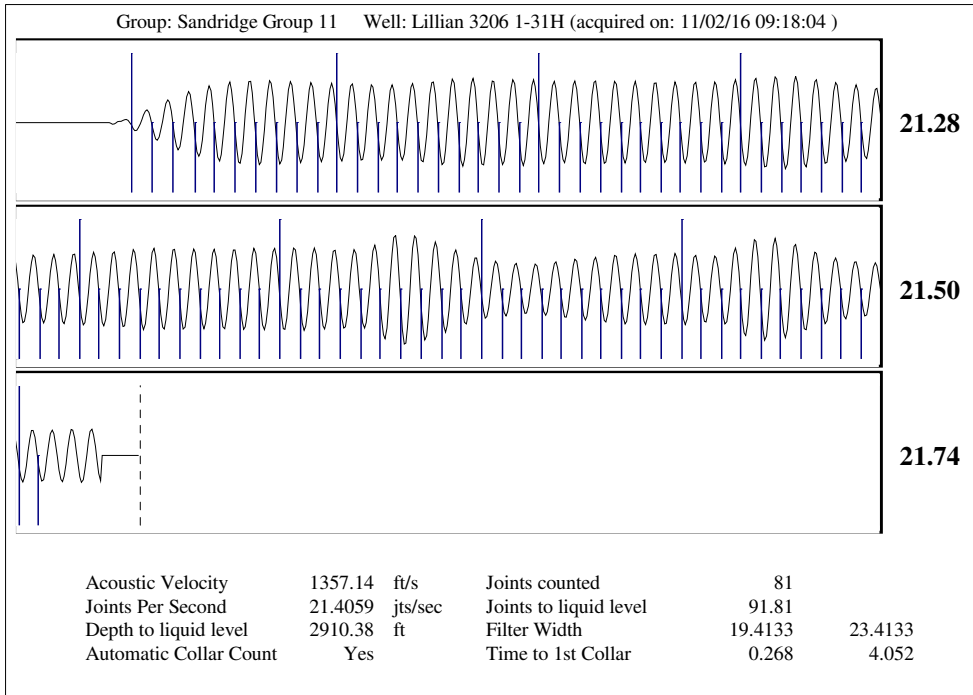
Change in Pressure 0.3 psi  
 Over Change in Time 1.00 min



Group: Sandridge Group 11 Well: Lillian 3206 1-31H (acquired on: 11/02/16 09:18:04)

Production		Potential		Casing Pressure		
Oil	0	- * -	BBL/D	376.8	psi (g)	
Water	1	- * -	BBL/D	Casing Pressure Buildup	0.3	
Gas	- * -	- * -	Mscf/D	1.00	min	
IPR Method		Vogel		Gas/Liquid Interface Pressure	403.0	
PBHP/SBHP		- * -		Liquid Level Depth	2910.38	
Production Efficiency		0.0		Tubing Intake Depth	4506.00	
Oil	40	deg.	API	Formation Depth	4930.00	
Water	1.05	Sp.Gr.	H2O			
Gas	0.62	Sp.Gr.	AIR			
Acoustic Velocity	1357.14	ft/s				

Lillian 3206 1-31H





123 Robert S. Kerr Ave.  
Oklahoma City, OK 73102

## Casing & Cement LILLIAN 3206 1-31H

**For String: Production Liner**

Casing Detail:									
Casing Description	Run Date	Set Depth (ftKB)	Run Job	Wellbore	Csg Cutoff...	Casing Cutoff Date	Centralizers	Scratchers	Rig
Production Liner	10/26/2012 05:00	8,722		Original Hole					

Casing Components:										
Joints	Item Description	Icon	OD (in)	ID (in)	Wt (lb/ft)	Grade	Top Connection Thread	Length (ft)	Top Depth (ftKB)	Btm (ftKB)
1	Baker liner top		4 1/2	4	11.60	P-110		18.00	4,504.9	4,522.9
Joints	Item Description	Icon	OD (in)	ID (in)	Wt (lb/ft)	Grade	Top Connection Thread	Length (ft)	Top Depth (ftKB)	Btm (ftKB)
97	Casing-Joints		4 1/2	4	11.60	P-110		4,111.05	4,522.9	8,634.0
Joints	Item Description	Icon	OD (in)	ID (in)	Wt (lb/ft)	Grade	Top Connection Thread	Length (ft)	Top Depth (ftKB)	Btm (ftKB)
1	Landing Joint		4 1/2	4	11.60	P-110		1.40	8,634.0	8,635.4
Joints	Item Description	Icon	OD (in)	ID (in)	Wt (lb/ft)	Grade	Top Connection Thread	Length (ft)	Top Depth (ftKB)	Btm (ftKB)
2	Casing-Joints		4 1/2	4	11.60	P-110		84.85	8,635.4	8,720.2
Joints	Item Description	Icon	OD (in)	ID (in)	Wt (lb/ft)	Grade	Top Connection Thread	Length (ft)	Top Depth (ftKB)	Btm (ftKB)
1	Shoe		4 1/2	4	11.60	P-110		1.80	8,720.2	8,722.0

Cementing Job Details:				
Description	Type	String	Wellbore	Job
Cementing Start Date	Cementing End Date		Cementing Company	
Comment				

Cement Stage#<Stage Number?> Description:				
Stage Number	Top Depth (ftKB)	Bottom Depth (ftKB)	Cement Volume Return (bbl)	
Float Failed?	Plug Failed?	Full Return?	Pipe Reciprocated?	Pressure Held (psi)
Top Plug?	Bottom Plug?		Initial Pump Rate (gpm)	Final Pump Rate (gpm)
Avg Pump Rate (bbl/min)	Final Pump Pressure (psi)	Plug Bump Pressure (psi)	Pressure Release Date	

<Fluid Type?> Fluid Details for Stage#<Stage Number?>:				
Fluid Type	Fluid Description	Amount (sacks)	Class	Volume Pumped (bbl)
Estimated Top (ftKB)	Estimated Bottom Depth (ftKB)	Yield (ft <sup>3</sup> /sack)	Mix H2O Ratio (gal/sack)	Free Water (%)
Density (lb/gal)	Plastic Viscosity (cP)	Thickening Time (hr)	1st Compressive Strength (psi)	
Comment				

Additive Details		
Add	Conc	Conc Unit

Conservation Division  
District Office No. 2  
3450 N. Rock Road  
Building 600, Suite 601  
Wichita, KS 67226



Phone: 316-337-7400  
Fax: 316-630-4005  
<http://kcc.ks.gov/>

Jay Scott Emler, Chairman  
Shari Feist Albrecht, Commissioner  
Pat Apple, Commissioner

Sam Brownback, Governor

November 18, 2016

Spence Laird  
SandRidge Exploration and Production LLC  
123 ROBERT S. KERR AVE  
OKLAHOMA CITY, OK 73102-6406

Re: Temporary Abandonment  
API 15-077-21882-01-00  
LILLIAN 3206 1-31H  
SE/4 Sec.31-32S-06W  
Harper County, Kansas

Dear Spence Laird:

"Your temporary abandonment (TA) application for the well listed above has been approved. In accordance with K.A.R. 82-3-111 the TA status of this well will expire 11/18/2017.

- \* If you return this well to service or plug it, please notify the District Office.
- \* If you sell this well you are required to file a Transfer of Operator form, T-1.
- \* If the well will remain temporarily abandoned, you must submit a new TA application, CP-111, before 11/18/2017.

You may contact me at the number above if you have questions.

Very truly yours,

Steve VanGieson"