



TEMPORARY ABANDONMENT WELL APPLICATION

OPERATOR: License# _____
 Name: _____
 Address 1: _____
 Address 2: _____
 City: _____ State: _____ Zip: _____ + _____
 Contact Person: _____
 Phone: (_____) _____
 Contact Person Email: _____
 Field Contact Person: _____
 Field Contact Person Phone: (_____) _____

API No. 15- _____
 Spot Description: _____
 _____ - _____ - _____ - _____ Sec. _____ Twp. _____ S. R. _____ E W
 _____ feet from N / S Line of Section
 _____ feet from E / W Line of Section
 GPS Location: Lat: _____, Long: _____
(e.g. xx.xxxxx) (e.g. -xxx.xxxxx)
 Datum: NAD27 NAD83 WGS84
 County: _____ Elevation: _____ GL KB
 Lease Name: _____ Well #: _____
 Well Type: (check one) Oil Gas OG WSW Other: _____
 SWD Permit #: _____ ENHR Permit #: _____
 Gas Storage Permit #: _____
 Spud Date: _____ Date Shut-In: _____

	Conductor	Surface	Production	Intermediate	Liner	Tubing
Size						
Setting Depth						
Amount of Cement						
Top of Cement						
Bottom of Cement						

Casing Fluid Level from Surface: _____ How Determined? _____ Date: _____

Casing Squeeze(s): _____ to _____ w / _____ sacks of cement, _____ to _____ w / _____ sacks of cement. Date: _____
(top) (bottom) (top) (bottom)

Do you have a valid Oil & Gas Lease? Yes No

Depth and Type: Junk in Hole at _____ Tools in Hole at _____ Casing Leaks: Yes No Depth of casing leak(s): _____
(depth) (depth)

Type Completion: ALT. I ALT. II Depth of: DV Tool: _____ w / _____ sacks of cement Port Collar: _____ w / _____ sack of cement
(depth) (depth)

Packer Type: _____ Size: _____ Inch Set at: _____ Feet

Total Depth: _____ Plug Back Depth: _____ Plug Back Method: _____

Geological Data:

Formation Name	Formation Top	Formation Base	Completion Information
1. _____	At: _____	to _____ Feet	Perforation Interval _____ to _____ Feet or Open Hole Interval _____ to _____ Feet
2. _____	At: _____	to _____ Feet	Perforation Interval _____ to _____ Feet or Open Hole Interval _____ to _____ Feet

~~UNDER PENALTY OF PERJURY I HEREBY ATTEST THAT THE INFORMATION CONTAINED HEREIN IS TRUE AND CORRECT TO THE BEST OF MY KNOWLEDGE~~

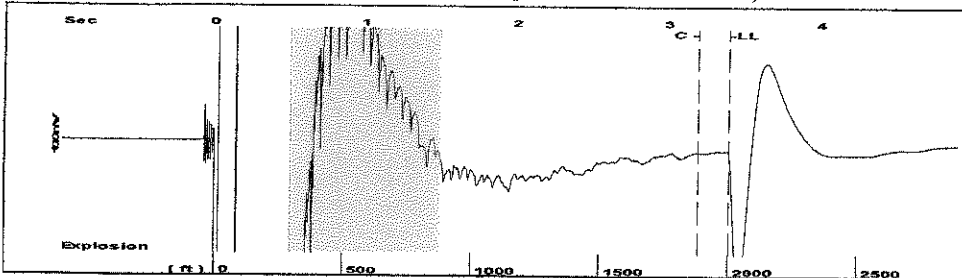
Submitted Electronically

Do NOT Write in This Space - KCC USE ONLY	Date Tested: _____	Results: _____	Date Plugged: _____	Date Repaired: _____	Date Put Back in Service: _____
	Review Completed by: _____ Comments: _____				
TA Approved: <input type="checkbox"/> Yes <input type="checkbox"/> Denied Date: _____					

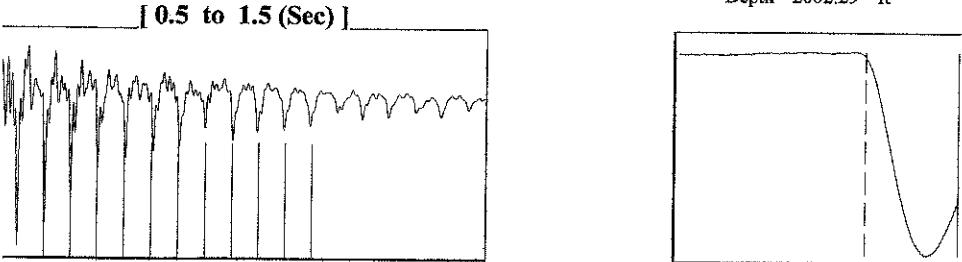
Mail to the Appropriate KCC Conservation Office:

	KCC District Office #1 - 210 E. Frontview, Suite A, Dodge City, KS 67801	Phone 620.225.8888
	KCC District Office #2 - 3450 N. Rock Road, Building 600, Suite 601, Wichita, KS 67226	Phone 316.337.7400
	KCC District Office #3 - 1500 SW Seventh Steet, Chanute, KS 66720	Phone 620.432.2300
	KCC District Office #4 - 2301 E. 13th Street, Hays, KS 67601-2651	Phone 785.625.0550

Group: MyWells Well: Tate # 1-5 (acquired on: 11/11/16 11:40:08)

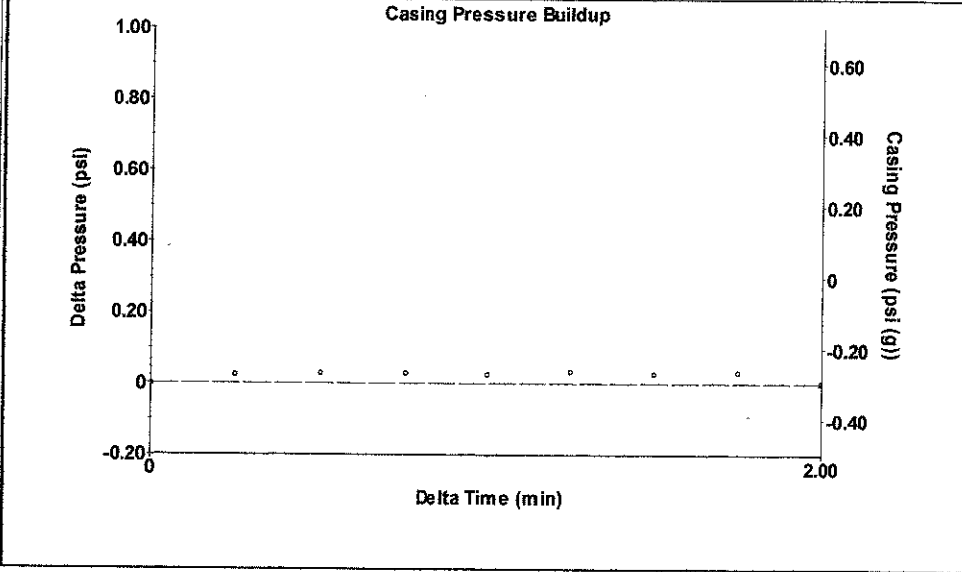


Filter Type High Pass Automatic Collar Count Yes Time 3.395 sec
 Manual Acoustic Velo 1167.64 ft/s Manual JTS/sec 18.1818 Joints 62.3571 Jts
 Depth 2002.29 ft



Analysis Method: Automatic

Group: MyWells Well: Tate # 1-5 (acquired on: 11/11/16 11:40:08)



Change in Pressure 0.00 psi PT12865
 Change in Time 2.00 min Range 0 - ? psi

Group: MyWells Well: Tate # 1-5 (acquired on: 11/11/16 11:40:08)

Production Current Potential Casing Pressure
 Oil - * - - * - BBL/D -0.3 psi (g)
 Water - * - - * - BBL/D Casing Pressure Buildup
 Gas - * - - * - Mscf/D 0.001 psi
 2.00 min
 IPR Method Vogel Gas/Liquid Interface Pressure
 PBHP/SBHP - * - 0.5 psi (g)
 Production Efficiency 0.0
 Liquid Level Depth
 Oil 40 deg.API 2002.29 ft
 Water 1.05 Sp.Gr.H2O
 Gas 0.82 Sp.Gr.AIR
 Pump Intake Depth
 Acoustic Velocity 1179.55 ft/s Formation Depth
 2280.00 ft

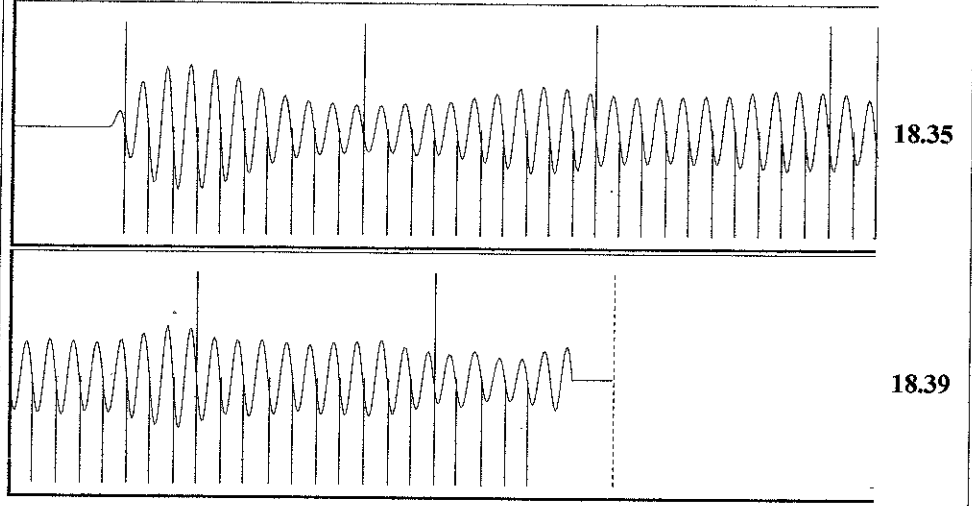


Producing
 Annular Gas Flow 0 Mscf/D
 % Liquid 100 %
 Pump Intake 95.1 psi (g)
 Producing BHP 95.1 psi (g)
 Static BHP - * - psi (g)

Formation Submergence
 Total Gaseous Liquid Column HT (TVD) 278 ft
 Equivalent Gas Free Liquid HT (TVD) 278 ft

Acoustic Test

Group: MyWells Well: Tate # 1-5 (acquired on: 11/11/16 11:40:08)



Acoustic Velocity 1179.55 ft/s Joints counted 54
 Joints Per Second 18.3673 jts/sec Joints to liquid level 62.3571
 Depth to liquid level 2002.29 ft Filter Width 16.1818 20.1818
 Automatic Collar Count Yes Time to 1st Collar 0.252 3.192

Conservation Division
District Office No. 1
210 E. Frontview, Suite A
Dodge City, KS 67801



Phone: 620-225-8888
Fax: 620-225-8885
<http://kcc.ks.gov/>

Jay Scott Emler, Chairman
Shari Feist Albrecht, Commissioner
Pat Apple, Commissioner

Sam Brownback, Governor

November 22, 2016

Melody C. Fletcher
Oil Producers Inc. of Kansas
1710 WATERFRONT PKWY
WICHITA, KS 67206-6603

Re: Temporary Abandonment
API 15-075-20037-00-00
TATE 1-5
SE/4 Sec.05-24S-41W
Hamilton County, Kansas

Dear Melody C. Fletcher:

"Your temporary abandonment (TA) application for the well listed above has been approved. In accordance with K.A.R. 82-3-111 the TA status of this well will expire 11/22/2017.

- * If you return this well to service or plug it, please notify the District Office.
- * If you sell this well you are required to file a Transfer of Operator form, T-1.
- * If the well will remain temporarily abandoned, you must submit a new TA application, CP-111, before 11/22/2017.

You may contact me at the number above if you have questions.

Very truly yours,

Michael Maier"