



Fall & Associates
Stake and Elevation Service
 P.O. Box 222
 Pretty Prairie, KS. 67570
 785-243-7506

Date 9-20-16

Invoice Number 09161633

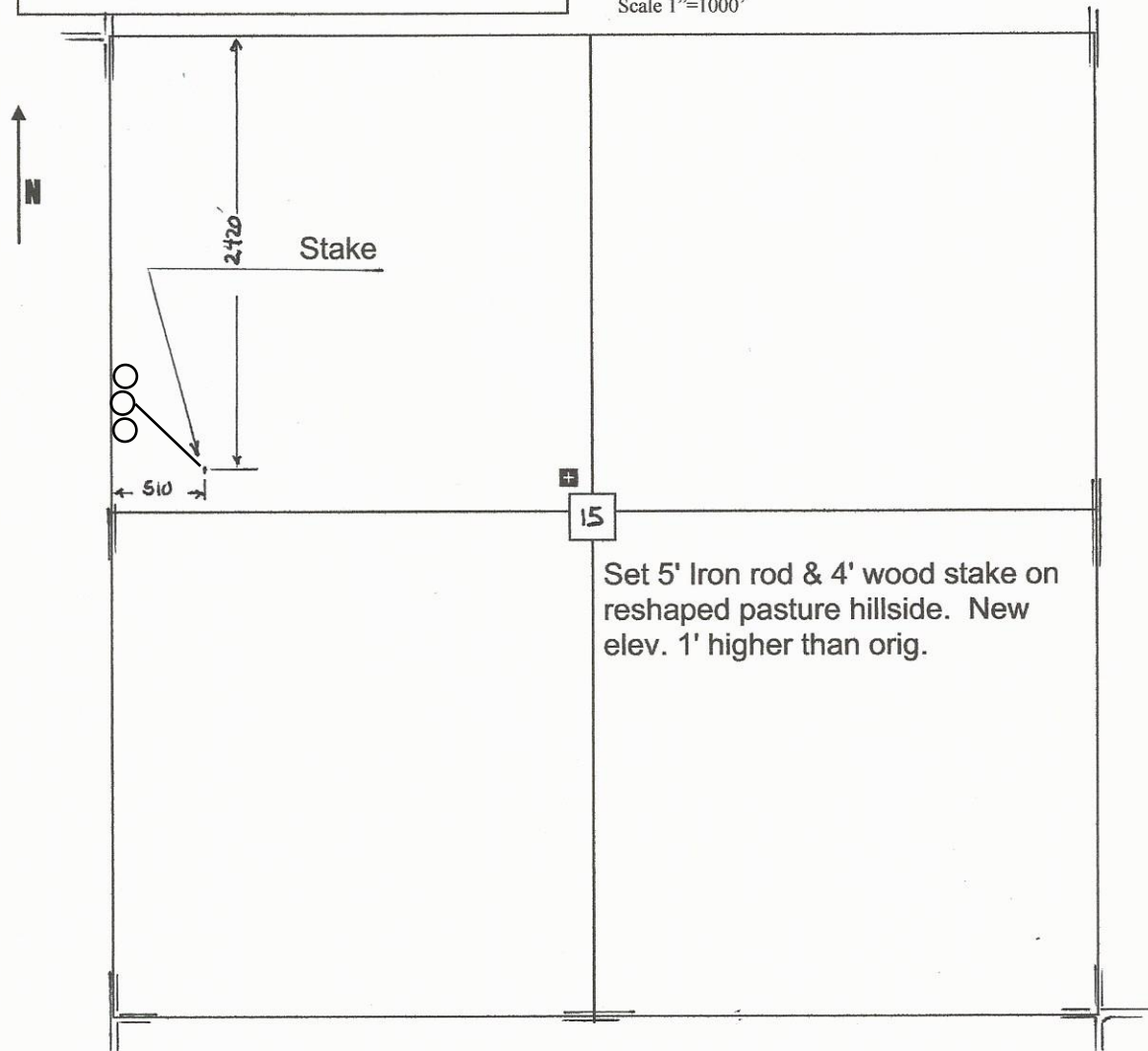
<u>MURFIN DRILLING</u>	<u>1-15</u>	<u>Almut-Restake</u>
Operator	Number	Farm Name
<u>Rawlins-KS</u>	<u>15</u> <u>5s</u> <u>32w</u>	<u>2420'FNL 510'FWL</u>
County-State	S T R	Location

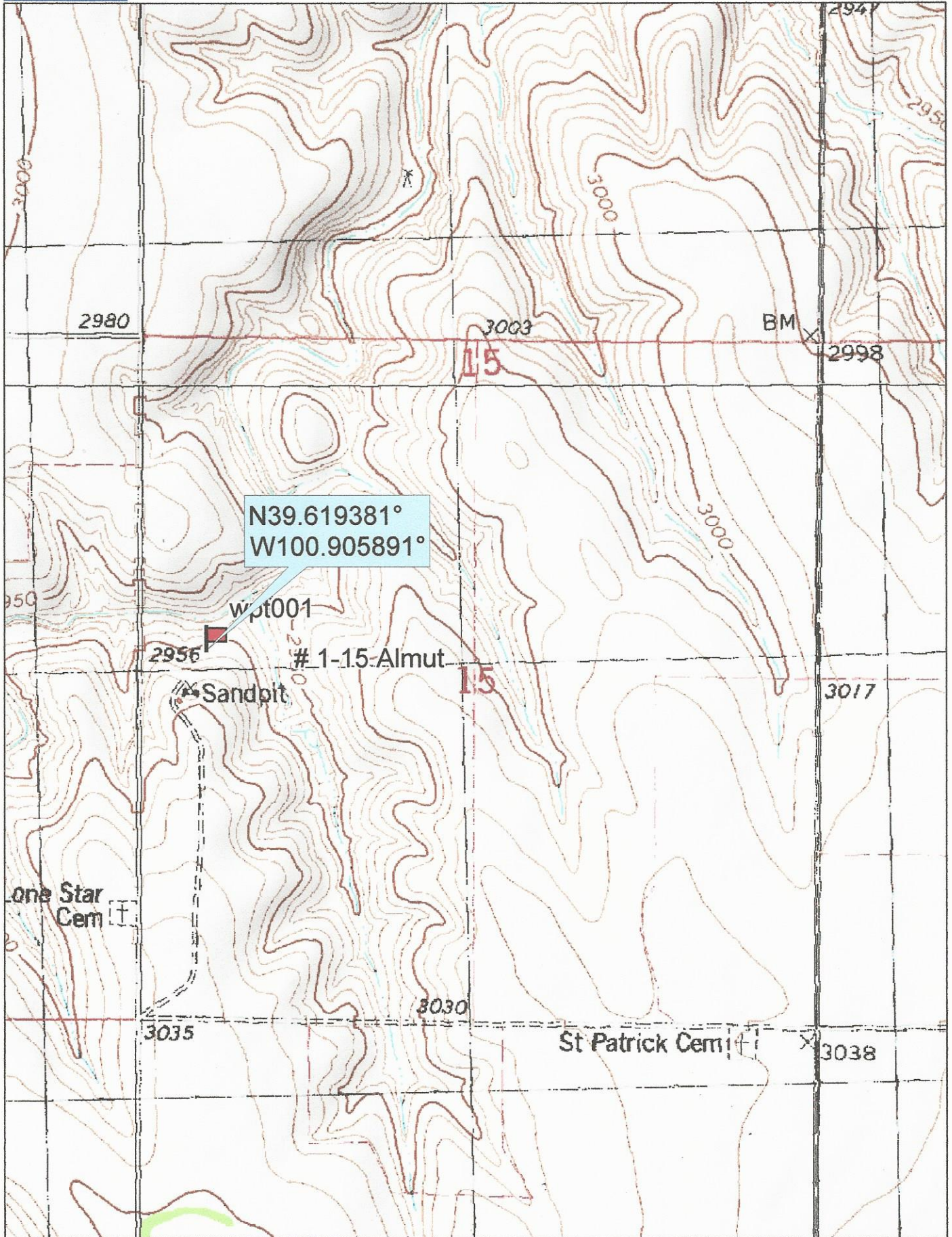
Murfin Drilling
 250 N. Water
 Suite 300
 Wichita, KS. 67202

Elevation 2952 Gr.

Ordered By: Shauna

Scale 1"=1000'





Data use subject to license.

© DeLorme. Topo North America™ 9.

www.delorme.com

