



## DRILL STEM TEST REPORT

Prepared For: **Shakespeare Oil Co, Inc**

202 W Main St.  
Salem, IL 62881

ATTN: Tim Priest

### **Beims #1-9**

#### **9-6s-38w Sherman,KS**

Start Date: 2016.10.19 @ 22:33:00

End Date: 2016.10.20 @ 06:47:45

Job Ticket #: 63452                      DST #: 1

Trilobite Testing, Inc  
PO Box 362 Hays, KS 67601  
ph: 785-625-4778 fax: 785-625-5620

Printed: 2016.10.26 @ 09:01:50



**TRILOBITE TESTING, INC**

# DRILL STEM TEST REPORT

Shakespeare Oil Co, Inc

**9-6s-38w Sherman,KS**

202 W Main St.  
Salem, IL 62881

**Beims #1-9**

Job Ticket: 63452

**DST#: 1**

ATTN: Tim Priest

Test Start: 2016.10.19 @ 22:33:00

## GENERAL INFORMATION:

Formation: **LKC H-J**

Deviated: No Whipstock: ft (KB)

Time Tool Opened: 01:11:15

Time Test Ended: 06:47:45

Test Type: Conventional Bottom Hole (Initial)

Tester: Bradley Walter

Unit No: 78

**Interval: 4454.00 ft (KB) To 4540.00 ft (KB) (TVD)**

Reference Elevations: 3513.00 ft (KB)

Total Depth: 4540.00 ft (KB) (TVD)

3505.00 ft (CF)

Hole Diameter: 7.88 inches Hole Condition: Good

KB to GR/CF: 8.00 ft

**Serial #: 8365**

**Inside**

Press@RunDepth: 218.50 psig @ 4455.00 ft (KB)

Capacity: 8000.00 psig

Start Date: 2016.10.19

End Date:

2016.10.20

Last Calib.: 2016.10.20

Start Time: 22:33:05

End Time:

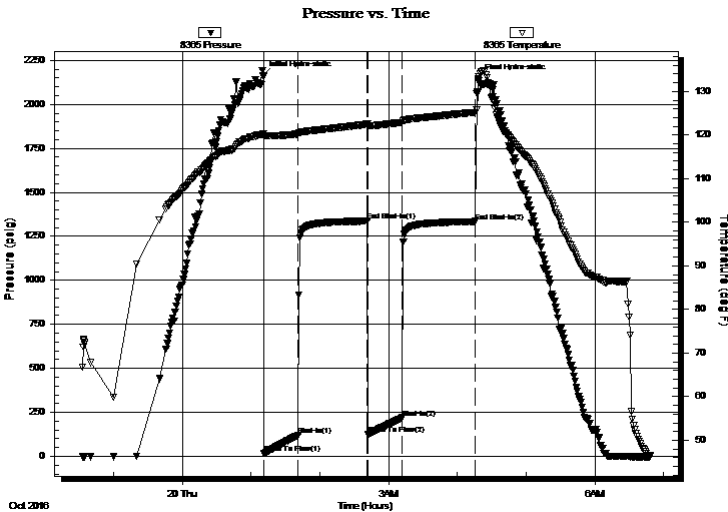
06:47:44

Time On Btm: 2016.10.20 @ 01:10:30

Time Off Btm: 2016.10.20 @ 04:18:15

TEST COMMENT: IF: BOB @ 22 min.  
IS: No return.  
FF: BOB @ 25 min.  
FS: No return.

## PRESSURE SUMMARY



Time (Min.)	Pressure (psig)	Temp (deg F)	Annotation
0	2165.00	120.32	Initial Hydro-static
1	17.15	119.75	Open To Flow (1)
31	120.26	120.22	Shut-In(1)
91	1337.02	122.48	End Shut-In(1)
92	125.62	122.11	Open To Flow (2)
122	218.50	122.89	Shut-In(2)
185	1334.21	125.20	End Shut-In(2)
188	2144.41	132.57	Final Hydro-static

## Recovery

Length (ft)	Description	Volume (bbl)
410.00	mcw 5m 95w	5.75

## Gas Rates

	Choke (inches)	Pressure (psig)	Gas Rate (Mcf/d)





**TRILOBITE  
TESTING, INC**

# DRILL STEM TEST REPORT

**TOOL DIAGRAM**

Shakespeare Oil Co, Inc

**9-6s-38w Sherman,KS**

202 W Main St.  
Salem, IL 62881

**Beims #1-9**

Job Ticket: 63452

**DST#: 1**

ATTN: Tim Priest

Test Start: 2016.10.19 @ 22:33:00

## Tool Information

Drill Pipe:	Length: 4443.00 ft	Diameter: 3.80 inches	Volume: 62.32 bbl	Tool Weight: 2000.00 lb
Heavy Wt. Pipe:	Length: 0.00 ft	Diameter: inches	Volume: 0.00 bbl	Weight set on Packer: 25000.00 lb
Drill Collar:	Length: 0.00 ft	Diameter: 2.25 inches	Volume: 0.00 bbl	Weight to Pull Loose: 78000.00 lb
			<u>Total Volume: 62.32 bbl</u>	Tool Chased 0.00 ft
Drill Pipe Above KB:	9.00 ft			String Weight: Initial 64000.00 lb
Depth to Top Packer:	4454.00 ft			Final 65000.00 lb
Depth to Bottom Packer:	ft			
Interval between Packers:	86.00 ft			
Tool Length:	106.00 ft			
Number of Packers:	2	Diameter: 6.75 inches		

Tool Comments:

## Tool Description

Tool Description	Length (ft)	Serial No.	Position	Depth (ft)	Accum. Lengths
Change Over Sub	1.00			4435.00	
Shut In Tool	5.00			4440.00	
Hydraulic tool	5.00			4445.00	
Packer	5.00			4450.00	20.00 Bottom Of Top Packer
Packer	4.00			4454.00	
Stubb	1.00			4455.00	
Recorder	0.00	8365	Inside	4455.00	
Recorder	0.00	8845	Outside	4455.00	
Perforations	18.00			4473.00	
Change Over Sub	1.00			4474.00	
Drill Pipe	62.00			4536.00	
Change Over Sub	1.00			4537.00	
Bullnose	3.00			4540.00	86.00 Bottom Packers & Anchor

**Total Tool Length: 106.00**



**TRILOBITE  
TESTING, INC**

# DRILL STEM TEST REPORT

**FLUID SUMMARY**

Shakespeare Oil Co, Inc

**9-6s-38w Sherman,KS**

202 W Main St.  
Salem, IL 62881

**Beims #1-9**

Job Ticket: 63452

**DST#: 1**

ATTN: Tim Priest

Test Start: 2016.10.19 @ 22:33:00

## Mud and Cushion Information

Mud Type: Gel Chem

Cushion Type:

Oil API:

0 deg API

Mud Weight: 9.00 lb/gal

Cushion Length:

ft

Water Salinity:

62000 ppm

Viscosity: 54.00 sec/qt

Cushion Volume:

bbbl

Water Loss: 7.19 in<sup>3</sup>

Gas Cushion Type:

Resistivity: ohm.m

Gas Cushion Pressure:

psig

Salinity: 2500.00 ppm

Filter Cake: 1.00 inches

## Recovery Information

Recovery Table

Length ft	Description	Volume bbl
410.00	mcw 5m 95w	5.751

Total Length: 410.00 ft      Total Volume: 5.751 bbl

Num Fluid Samples: 0

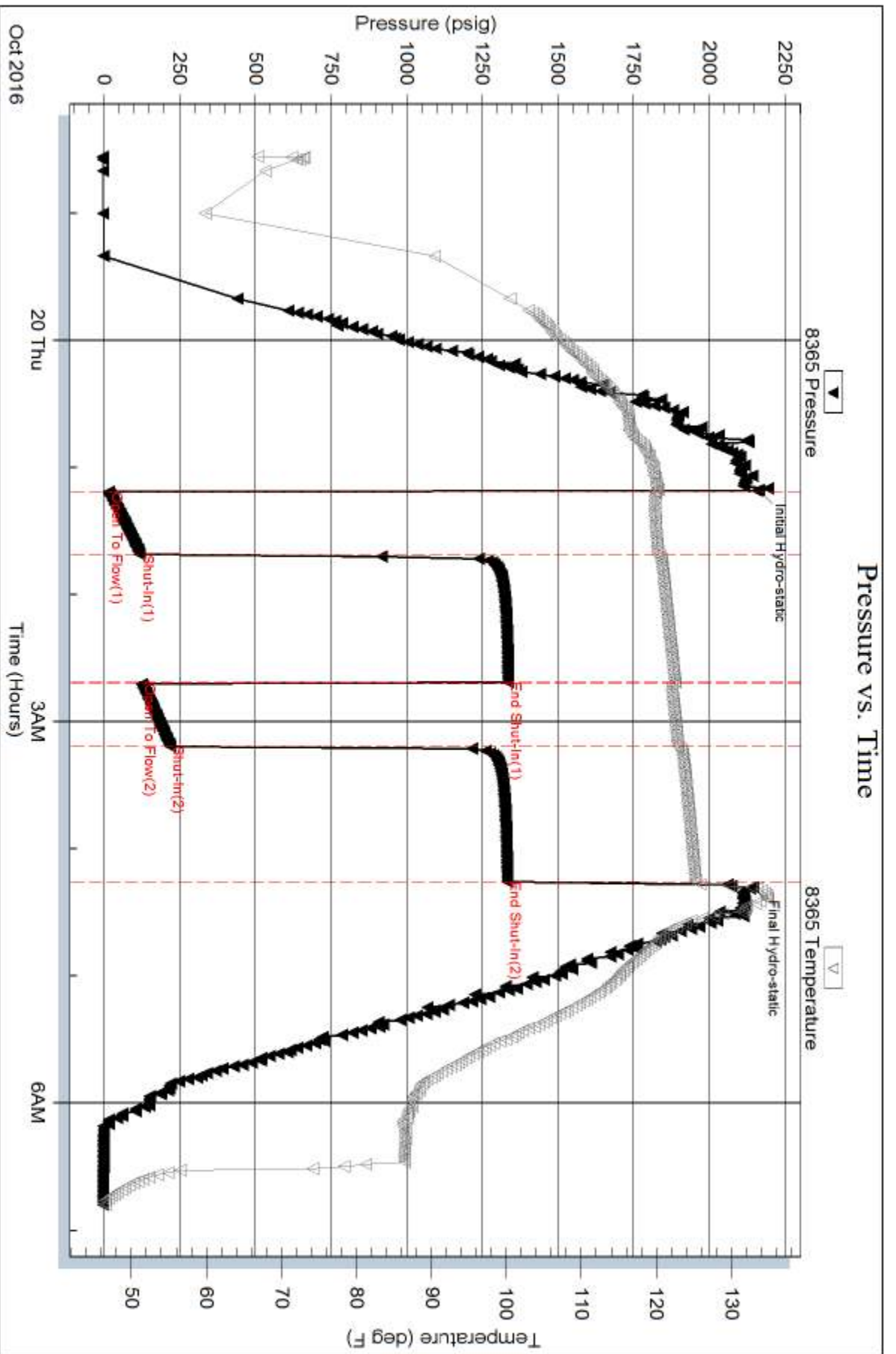
Num Gas Bombs: 0

Serial #:

Laboratory Name:

Laboratory Location:

Recovery Comments: rw is .158 @ 54F = 62000ppm

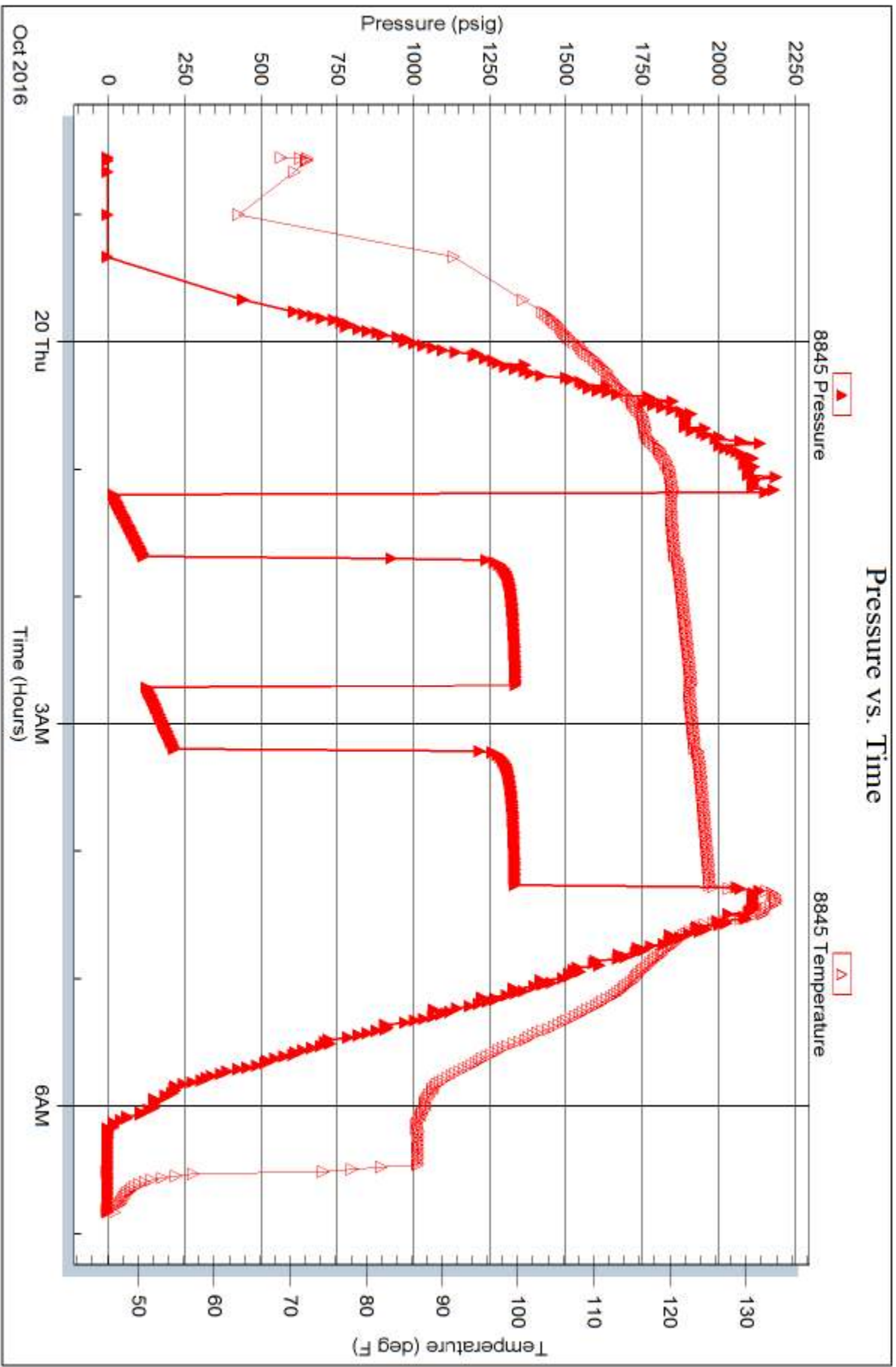


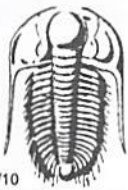
Serial #: 8845

Outside Shakespeare Oil Co, Inc

Beins #1-9

DST Test Number: 1





# TRILOBITE TESTING INC.

1515 Commerce Parkway • Hays, Kansas 67601

## Test Ticket

NO. **63452**

Well Name & No. Beims # 1-9 Test No. 1 Date 10/20/2016  
 Company Shakespeare Oil Co, Inc Elevation 3513 KB 3505 GL  
 Address 202 W Main St Salem, IL 62881  
 Co. Rep / Geo. Tim Priest Rig Dute #2  
 Location: Sec. 9 Twp. 6S Rge. 38 W Co. Sherman State Ks

Interval Tested 4454 - 4540 Zone Tested LKC H-J  
 Anchor Length 86' Drill Pipe Run 4443 Mud Wt. 9.2  
 Top Packer Depth 4449 Drill Collars Run Ø Vis 54  
 Bottom Packer Depth 4454 Wt. Pipe Run Ø WL 7.2  
 Total Depth 4540 Chlorides 2500 ppm System LCM 1.5

Blow Description IF BOB @ 22 min.  
ISI No return.  
FF BOB @ 25 min.  
FSI No return.

Rec	Feet of	%gas	%oil	%water	%mud
<u>410</u>	<u>MCD</u>			<u>95</u>	<u>5</u>
Rec	Feet of	%gas	%oil	%water	%mud
Rec	Feet of	%gas	%oil	%water	%mud
Rec	Feet of	%gas	%oil	%water	%mud
Rec	Feet of	%gas	%oil	%water	%mud

Rec Total 410 BHT 126 Gravity — API RW 158 @ 54 °F Chlorides 62,000 ppm  
 (A) Initial Hydrostatic 2165  Test 1150 T-On Location 2115  
 (B) First Initial Flow 17  Jars \_\_\_\_\_ T-Started 2233  
 (C) First Final Flow 120  Safety Joint \_\_\_\_\_ T-Open Ø111  
 (D) Initial Shut-In 1337  Circ Sub H/C \_\_\_\_\_ T-Pulled Ø411  
 (E) Second Initial Flow 126  Hourly Standby \_\_\_\_\_ T-Out Ø648  
 (F) Second Final Flow 219  Mileage 228 BT X2 \_\_\_\_\_  
 (G) Final Shut-In 1334  Sampler 140rt 210 \_\_\_\_\_  
 (H) Final Hydrostatic 2144  Straddle \_\_\_\_\_

Initial Open 30  Shale Packer 250 \_\_\_\_\_  
 Initial Shut-In 60  Extra Packer \_\_\_\_\_  
 Final Flow 30  Extra Recorder \_\_\_\_\_  
 Final Shut-In 60  Day Standby \_\_\_\_\_  
 Sub Total 1610  Accessibility \_\_\_\_\_  
 Total 1610 MP/DST Disc't \_\_\_\_\_

Approved By \_\_\_\_\_ Our Representative [Signature]

TriLOBITE TESTING INC. shall not be liable for damaged of any kind of the property or personnel of the one for whom a test is made, or for any loss suffered or sustained, directly or indirectly, through the use of its equipment, or its statements or opinion concerning the results of any test, tools lost or damaged in the hole shall be paid for at cost by the party for whom the test is made.