

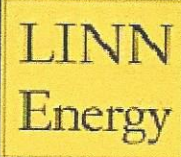
**LINN OPERATING INC.**  
**SUDAN INTERIOR MISSION 5-17**  
 2212' FSL  
 1665' FWL  
 SE/4 OF NW/4 OF NE/4 OF SW/4  
 SECTION 17, T-22-S, R-34-W, FINNEY CO., KS.  
 LATITUDE: 38°08'24.15412" N  
 LONGITUDE: 101°04'.4306611" W  
 GROUND ELEVATION: 2969.0'



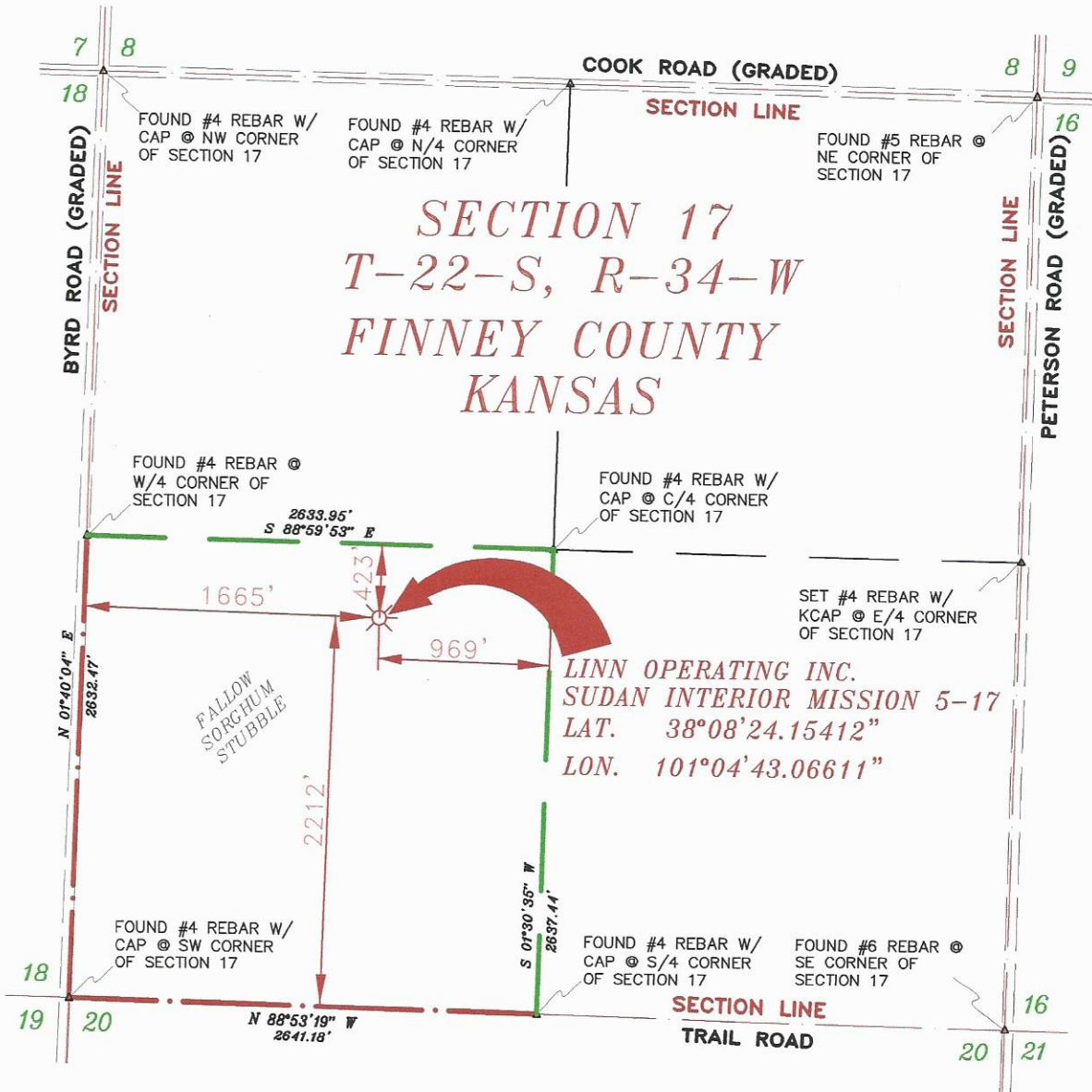
**Keller**  
**Surveying &**  
**Mapping**

2330 B LAKEVIEW DRIVE  
 AMARILLO, TEXAS 79109  
 PH.: (806) 418-5253

DRAWN BY: MTK  
 APPROVED BY: JJK  
 SCALE: 1" = 1000'  
 DATE: 3/29/16



2225 W. OKLAHOMA AVE.  
 ULYSSES KANSAS 67880  
 PH.: (620) 356-6940  
 FAX: (620) 356-6950



- NOTES:
- 1) THIS PLAT DOES NOT REPRESENT A TRUE BOUNDARY SURVEY. THE FOOTAGES AND TIES SHOWN ARE FROM LINES OF OCCUPATION WHICH MAY NOT BE ACTUAL PROPERTY LINES.
  - 2) CONTRACTOR TO CONTACT ONE-CALL FOR FOREIGN UTILITY LOCATIONS PRIOR TO ANY EXCAVATION OR CONSTRUCTION.
  - 3) NAD 27 LAT-LONG



JOHN DAVID KELLER, L.S. NO. 1518

**LINN OPERATING INC.**  
**SUDAN INTERIOR MISSION 5-17**  
 SEC. 17, T-22-S, R-34-W,  
 FINNEY COUNTY, KANSAS