

**LINN OPERATING INC.
SUDAN INTERIOR MISSION 6-17**

1494' FSL
2284' FWL
SW/4 OF SE/4 OF NE/4 OF SW/4
SECTION 17, T-22-S, R-34-W, FINNEY CO., KS.
LATITUDE: 38°08'17.10381" N
LONGITUDE: 101°04'35.33800" W
GROUND ELEVATION: 2965.6'



**Keller
Surveying &
Mapping**

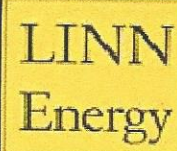
2330 B LAKEVIEW DRIVE
AMARILLO, TEXAS 79109
PH.: (806)418-5253

DRAWN BY: MTK

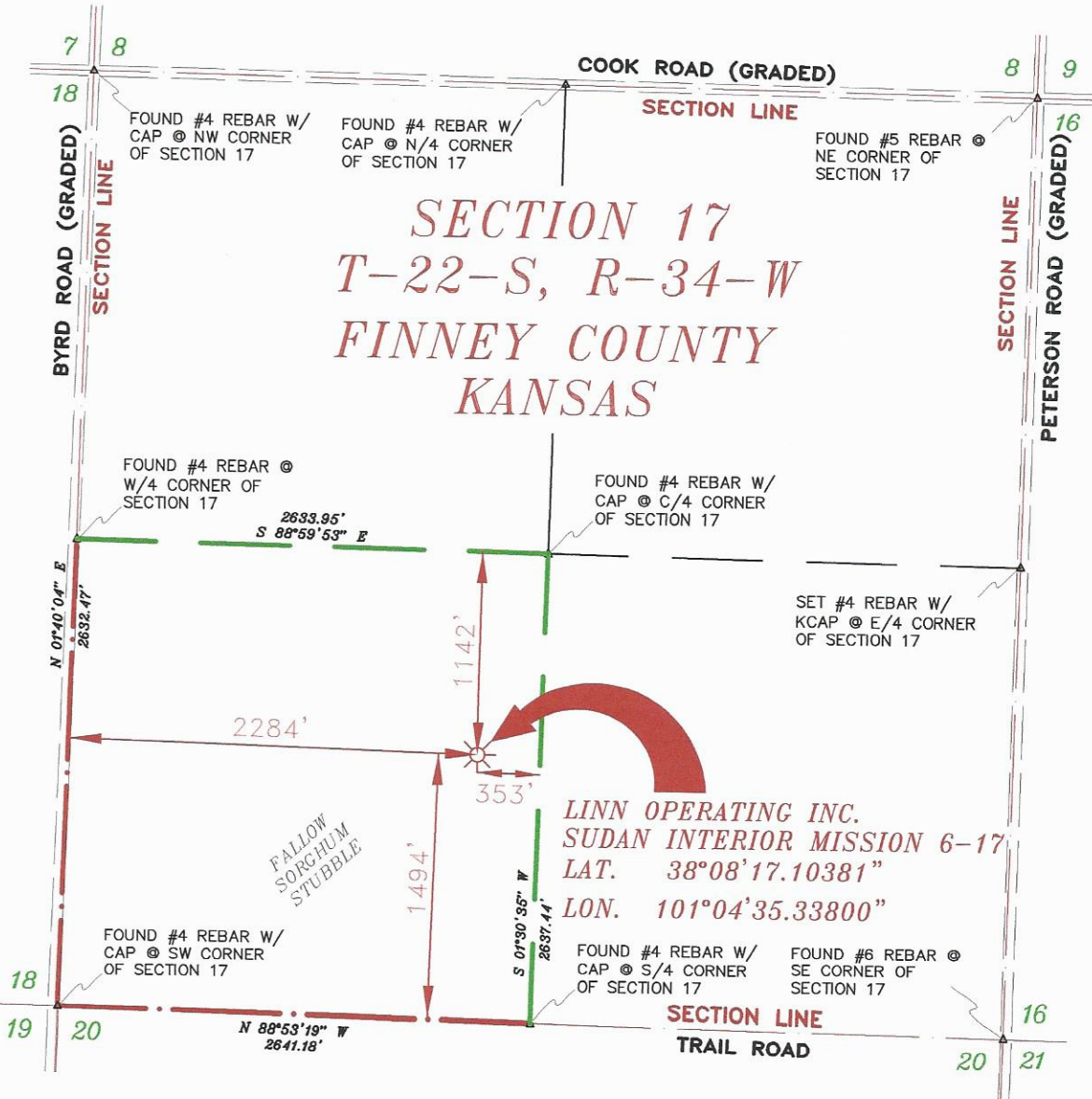
APPROVED BY: JDK

SCALE: 1" = 1000'

DATE: 3/29/16



2225 W. OKLAHOMA AVE.
ULYSSES KANSAS 67880
PH.: (620)356-6940
FAX: (620)356-6950



- NOTES:
- 1) THIS PLAT DOES NOT REPRESENT A TRUE BOUNDARY SURVEY. THE FOOTAGES AND TIES SHOWN ARE FROM LINES OF OCCUPATION WHICH MAY NOT BE ACTUAL PROPERTY LINES.
 - 2) CONTRACTOR TO CONTACT ONE-CALL FOR FOREIGN UTILITY LOCATIONS PRIOR TO ANY EXCAVATION OR CONSTRUCTION.
 - 3) MAD 27 LAT-LONG

**LINN OPERATING INC.
SUDAN INTERIOR MISSION 6-17
LAT. 38°08'17.10381"
LON. 101°04'35.33800"**



**LINN OPERATING INC.
SUDAN INTERIOR MISSION 6-17
SEC. 17, T-22-S, R-34-W,
FINNEY COUNTY, KANSAS**