

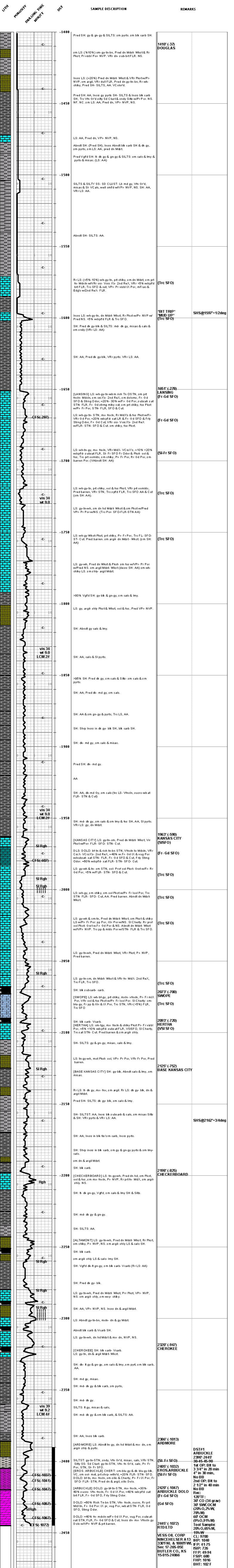
ROGER L. MARTIN

GEOLOGIST'S REPORT
DRILLING TIME AND SAMPLE LOG

COMPANY <u>VESS OIL CORPORATION</u>	ELEVATIONS
LEASE <u>NINCEHELSE 'A' #13</u>	KB <u>1373'</u> GL <u>1364'</u>
FIELD <u>EL DORADO</u>	Measurements Are All
LOCATION <u>330' FNL & 1880 FWL</u>	From <u>KB</u>
SECTION <u>17</u> TOWNSHIP <u>26S</u> RANGE <u>05E</u>	API <u>15-015-24066-0000</u>
COUNTY <u>BUTLER</u> STATE <u>KANSAS</u>	
CONTRACTOR <u>C&G DRILLING, Rig #2</u>	CASING
SPUD <u>09/01/2016</u> COMP <u>09/09/2016</u>	SURFACE <u>6 jts 8-5/8" set @ 263' KB</u> <u>w/150 sx Class A, 3% cc</u>
RTD <u>2445' (-1072)</u> LTD <u>2445' (-1072)</u>	PRODUCTION <u>58 jts 5-1/2" set @</u> <u>2418' KB w/150sx Thickset, 5#/sk Kolseal</u>
ELI: DIL/MEL, CDL/CNL/PE	ELECTRICAL SURVEYS

FORMATION TOPS	LOG	SAMPLES	CHRONOLOGY
HEEBNER	1376' (-3)		08/20/2016- MIRU C&G Drilling Rig #2. Buckeye deliver 6 jts of 8-5/8 23#/FT L.S. Casing= 252' 23' (threads off)
DOUGLAS	1410' (-37)		
LANSING	1651' (-278)	1651' (-278)	09/01/2016- Start drilling Rathole @ 12:45 PM. SPUD 12-14" hole @ 2:30 AM TD @ 263'. Run 8-5/8" 23#/FT Casing= 252'. Set @ 263' KB. Consolidated Cement w/ 150 sx Class A, 3% cc. Cto cement. Plug down @ 10-18 PM. Shut down until 09/05.
KANSAS CITY	1963' (-590)	1963' (-590)	
SWOPE	2073' (-700)	2073' (-700)	
HERTHA	2093' (-720)	2093' (-720)	09/06/2016- Drlg under surface @ 7:30 AM. 3:15 PM dila @ 905'
BASE KANSAS CITY	2125' (-752)	2125' (-752)	
CHECKERBOARD	2198' (-825)	2198' (-825)	09/07/2016- Drlg @ 1720'. Bit trip & mud up @ 1597'. Survey: 263'-12, 620'-14, 1262'-12, 1597'-12 MW 9.0, VIS 34, WL 11.2, LCM 0.
HEFLER	2212' (-839)	n/a	
CHEROKEE	2321' (-948)	2320' (-947)	09/08/2016- Drlg @ 2250'. Survey: 2182'-34, MW 9.2, VIS 44, WL 9.2, LCM 4#. CFS @ 2410', 2414', 2420', etc.
ARDMORE	2386' (-1013)	2386' (-1013)	
EROS ARBUCKLE	2408' (-1035)	2408' (-1032)	09/09/2016- RTD 2445'. Running DST #1: 2390-2445'. Run OH Logs. Set ready to run 5-1/2" casing. Heavy rains and wind.
ARBUCKLE DOLO	2414' (-1041)	2420' (-1047)	
LTD/RTD	2445' (-1072)	2448' (-1072)	

REMARKS:
CASING JOB (C.COATS, ENGINEER, VOC) RAN 58 jts of 5-1/2" 15.5#/M J-55 Casing Tall= 2423.12', Plus Packer Shoes= 3.00'. Total= 2426.12'. Set @ 2418' KB. Put on 6 centralizers and 2 baskets. Tagged TD @ 2445' and picked back up 27'. Set @ 2418' KB. Cto 20 min. Packer shoes set @ 1000' Cto for 20 min. Pump 500 gal mud flush. Cement rathole w/ 25 sc. mousehole w/ 15 sc. Consolidated Sandies cemented with 150 sx Thickset w/ 5#/sk Kolseal. Lit pressure to 750#. Land plug @ 1150' @ 6:12 AM, 09/10/2016. Release, it held. Sets slips and out of casing.
E-Log tops by P. Ramondella, @geologist, VOC.
Respectfully submitted,
Roger L. Martin, Geologist (Wellsite)



15% W
CL: 9700
NINCEHELSE A13
330' FNL & 1880' FWL
Sec 17-26S-05E
BUTLER CO., KS
15-015-24066
145W
CL: 9700
BHP: 1048
IF-P: 41.75
ISIP: 726
FFP: 49.94
FSIP: 1680
BHT: 102 F



DIAMOND TESTING
P.O. Box 157
HOISINGTON, KANSAS 67544
(800) 542-7313
DRILL-STEM TEST TICKET
FILE: NINCE113DST1

TIME ON: 03:58
TIME OFF: 11:57

Company Vess Oil Corp Lease & Well No. Nincehelser #13
Contractor C&G Drilling, Rig #2 Charge to Vess Oil Corp
Elevation 1373' KB Formation Arbuckle Effective Pay _____ Ft. Ticket No. F441
Date 9-9-16 Sec. 17 Twp. 26S S Range 5E W County Butler State KANSAS
Test Approved By Roger Martin Diamond Representative Jake Fahrenbruch

Formation Test No. 1 Interval Tested from 2390 ft. to 2445 ft. Total Depth 2445 ft.
Packer Depth 2385 ft. Size 6 3/4 in. Packer depth _____ ft. Size 6 3/4 in.
Packer Depth 2390 ft. Size 6 3/4 in. Packer depth _____ ft. Size 6 3/4 in.
Depth of Selective Zone Set _____

Top Recorder Depth (Inside) 2392 ft. Recorder Number 5951 Cap. 5000 P.S.I.
Bottom Recorder Depth (Outside) 2393 ft. Recorder Number 5584 Cap. 5000 P.S.I.
Below Straddle Recorder Depth _____ ft. Recorder Number _____ Cap. _____ P.S.I.

Mud Type CHEMICAL Viscosity 49 (4# LCM) Drill Collar Length 240 ft. I.D. 2 1/4 in.
Weight 9.1 Water Loss 8.8 cc. Weight Pipe Length 0 ft. I.D. 2 7/8 in.
Chlorides 1,000 P.P.M. Drill Pipe Length 2,122 ft. I.D. 3 1/2 in.
Jars: Make STERLING Serial Number #5 J&SJ Test Tool Length 28 ft. Tool Size 3 1/2-IF in.
Did Well Flow? NO Reversed Out NO Anchor Length 55 ft. Size 4 1/2-FH in.
Main Hole Size 7 7/8 Tool Joint Size 4 1/2 XH in. 22' PERF IN ANCHOR Surface Choke Size 1 in. Bottom Choke Size 5/8 in.

Blow: 1st Open: Blow increased to 4". No blowback.
2nd Open: Blow increased to 2". No blowback.

Recovered 30 ft. of Free Oil 100% oil
Recovered 30 ft. of SWCOCM 20% oil, 2% wtr, 78% mud
Recovered 60 ft. of OCM 9% oil, 91% mud

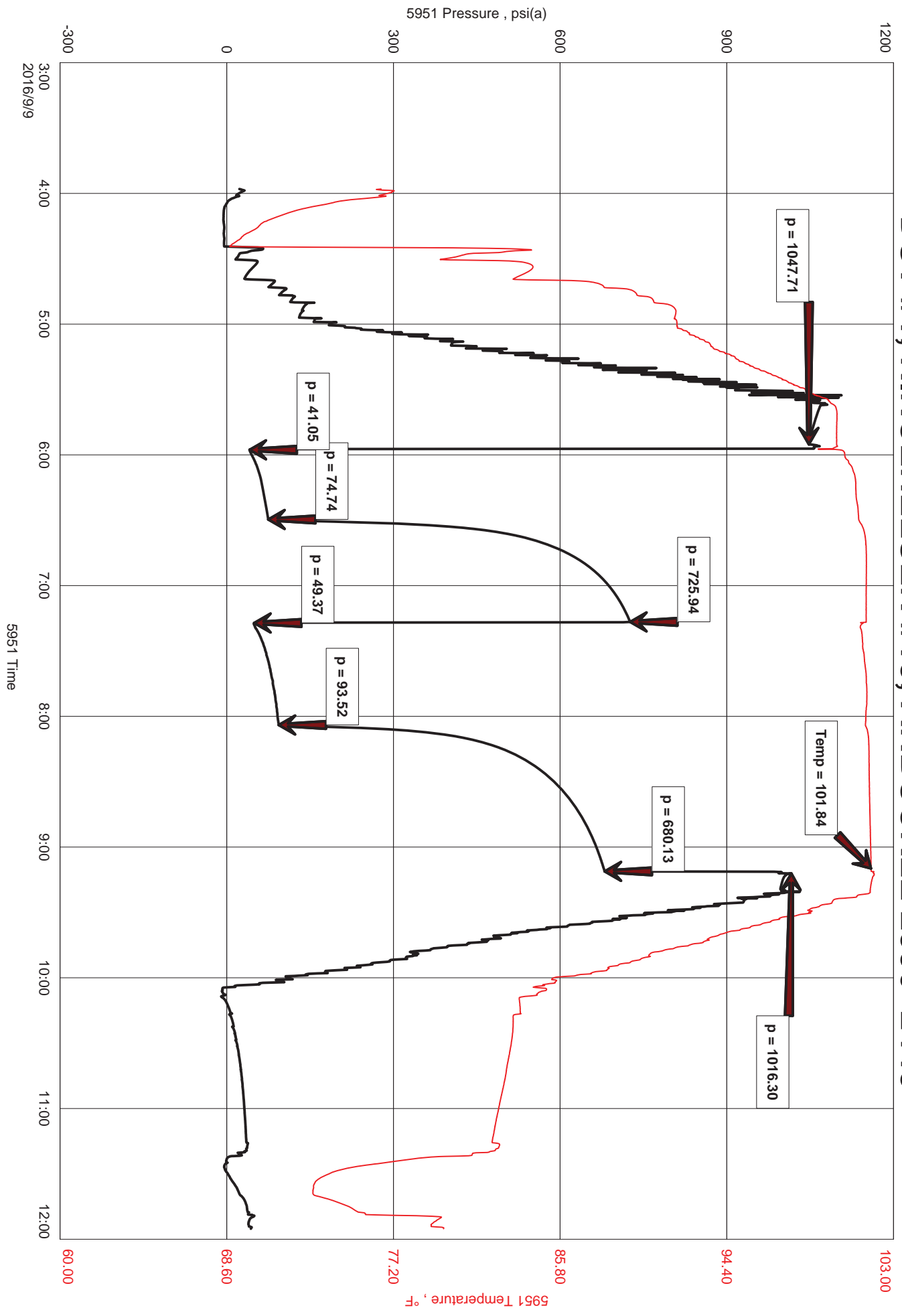
Recovered _____ ft. of _____	Price Job
Recovered _____ ft. of _____	Other Charges
Recovered _____ ft. of TOTAL RECOVERED FLUID: 120'	Insurance
Remarks: <u>TOOL SAMPLE: W&OCM 20% oil, 15% wtr, 65% m</u>	
<u>Chlorides: 9,700 PPM</u> <u>RW: .62 @ 70 F</u> <u>PH: 7.0</u>	
<u>Gravity: 34 @ 60F</u>	Total

Time Set Packer(s) 06:00 A.M. P.M. Time Started Off Bottom 09:00 A.M. P.M. Maximum Temperature 102 F

Initial Hydrostatic Pressure..... (A) 1048 P.S.I.
Initial Flow Period..... Minutes 30 (B) 41 P.S.I. to (C) 75 P.S.I.
Initial Closed In Period..... Minutes 45 (D) 726 P.S.I.
Final Flow Period..... Minutes 45 (E) 49 P.S.I. to (F) 94 P.S.I.
Final Closed In Period..... Minutes 60 (G) 680 P.S.I.
Final Hydrostatic Pressure..... (H) 1016 P.S.I.

Diamond Testing shall not be liable for damages of any kind to the property or personnel of the one for whom a test is made or for any loss suffered or sustained, directly or indirectly, through the use of its equipment, or its statement or opinion concerning the result of any test. Tools lost or damaged in the hole shall be paid for at cost by the party for whom the test is made.

DST #1, NINCEHELSEER #13, ARBUCKLE 2390'-2445'



DIAMOND TESTING GENERAL REPORT

Jake Fahrenbruch, Tester

Cell: (620) 282-8977 / Office: (800) 542-7313



TEST INFORMATION

Well Name	Nincehelsler #13
Company Name	Vess Oil Corp
Formation	DST #1, Arbuckle 2390'-2445'
Test Type	Bottomm-Hole w/J&SJ
Surface Location	Sec 17-26s-5e-Butler Co.-KS
KB Elevation (SL)	1373.000
Gauge Name	5951
Start Test Date	2016/09/09
Start Test Time	03:58:00
Final Test Date	2016/09/09
Final Test Time	11:57:00
Job Number	F441
Contact	Casey Coats
Site Contact	Roger Martin

TEST RESULTS

Initial Flow: Blow increased to 4". No blowback.
Final Flow: Blow increased to 2". No blowback.

TOTAL RECOVERED FLUID: 120'

- 30' Free Oil 100% oil
- 30' SWCOCM 20% oil, 2% wtr, 78% mud
- 60' OCM 9% oil, 91% mud
- TOOL SAMPLE: W&OCM, 20% oil, 15% wtr, 65% mud
- Gravity: 34 @ 60F ---- Chlorides: 9,700 PPM ---- RW: .62 @ 70F ---- PH: 7.0

DST #1, NINCEHELSELER #13, ARBUCKLE 2390'-2445'

