



TRILOBITE TESTING, INC.

DRILL STEM TEST REPORT

Ritchie Exploration Inc
 8100 E 22d St n 700
 Wichita, Ks 67278
 ATTN: John Goldsmith

32-19s-30w Lane, Ks
Anderson 32B #1
 Job Ticket: 65503 **DST#: 6**
 Test Start: 2016.08.11 @ 20:00:09

GENERAL INFORMATION:

Formation: **Miss**
 Deviated: No Whipstock: ft (KB)
 Test Type: Conventional Bottom Hole (Reset)
 Time Tool Opened: 21:51:09
 Tester: Brandon Turley
 Time Test Ended: 03:46:09
 Unit No: 79
Interval: 4604.00 ft (KB) To 4678.00 ft (KB) (TVD)
 Reference Elevations: 2934.00 ft (KB)
 Total Depth: 4678.00 ft (KB) (TVD)
 2929.00 ft (CF)
 Hole Diameter: 7.88 inches
 Hole Condition: Good
 KB to GR/CF: 5.00 ft

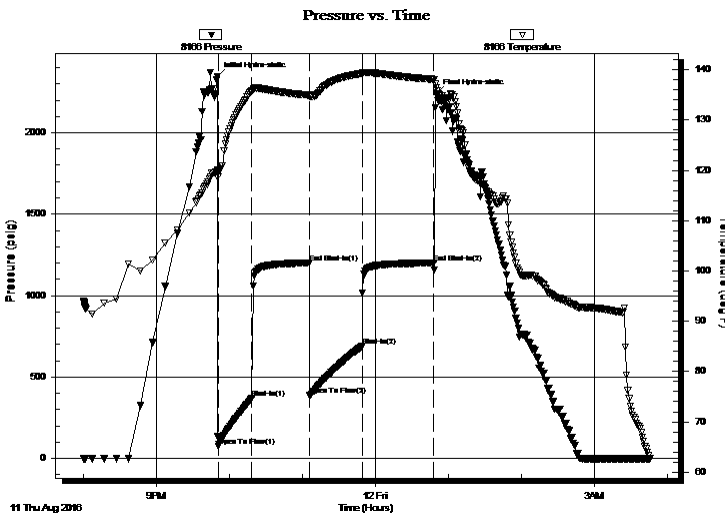
Serial #: 8166

Outside

Press @ Run Depth: 687.91 psig @ 4605.00 ft (KB) Capacity: 8000.00 psig
 Start Date: 2016.08.11 End Date: 2016.08.12 Last Calib.: 2016.08.12
 Start Time: 20:00:14 End Time: 03:46:08 Time On Btm: 2016.08.11 @ 21:50:09
 Time Off Btm: 2016.08.12 @ 00:50:09

TEST COMMENT: IF: BOB in 4 min.
 IS: No return.
 FF: BOB in 5 min.
 FS: No return.

PRESSURE SUMMARY



Time (Min.)	Pressure (psig)	Temp (deg F)	Annotation
0	2342.79	120.07	Initial Hydro-static
1	73.41	119.82	Open To Flow (1)
29	370.31	135.74	Shut-In(1)
76	1200.04	134.97	End Shut-In(1)
76	385.59	134.72	Open To Flow (2)
119	687.91	139.25	Shut-In(2)
178	1199.83	138.08	End Shut-In(2)
180	2240.15	136.40	Final Hydro-static

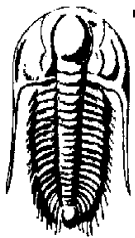
Recovery

Length (ft)	Description	Volume (bbl)
441.00	ocmw 5%o 85%w 10%m	5.09
378.00	gocmw 30%g 10%o 50%w 10%m	5.30
504.00	ocmw 5%o 70%w 25%m	7.07
220.00	ocw m 10%o 10%w 80%m	3.09
0.00	63 GIP	0.00

* Recovery from multiple tests

Gas Rates

Choke (inches)	Pressure (psig)	Gas Rate (Mcf/d)



TRILLOBITE TESTING, INC.

DRILL STEM TEST REPORT

Ritchie Exploration Inc

32-19s-30w Lane, Ks

8100 E 22d St n 700
Wichita, Ks 67278

Anderson 32B #1

ATTN: John Goldsmith

Job Ticket: 65503

DST#: 6

Test Start: 2016.08.11 @ 20:00:09

GENERAL INFORMATION:

Formation: Miss

Deviated: No Whipstock: ft (KB)

Time Tool Opened: 21:51:09

Time Test Ended: 03:46:09

Test Type: Conventional Bottom Hole (Reset)

Tester: Brandon Turley

Unit No: 79

Interval: 4604.00 ft (KB) To 4678.00 ft (KB) (TVD)

Reference Elevations: 2934.00 ft (KB)

Total Depth: 4678.00 ft (KB) (TVD)

2929.00 ft (CF)

Hole Diameter: 7.88 inches Hole Condition: Good

KB to GR/CF: 5.00 ft

Serial #: 8875

Inside

Press@RunDepth: psig @ 4605.00 ft (KB)

Capacity: 8000.00 psig

Start Date: 2016.08.11

End Date: 2016.08.12

Last Calib.: 2016.08.12

Start Time: 20:00:48

End Time: 03:46:42

Time On Btm:

Time Off Btm:

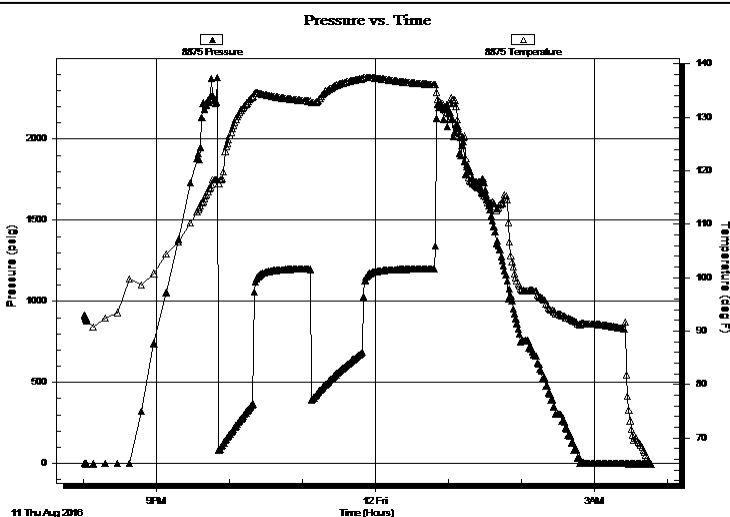
TEST COMMENT: IF: BOB in 4 min.

IS: No return.

FF: BOB in 5 min.

FS: No return.

PRESSURE SUMMARY



Time (Min.)	Pressure (psig)	Temp (deg F)	Annotation

Recovery

Length (ft)	Description	Volume (bbl)
441.00	ocmw 5%o 85%w 10%m	5.09
378.00	gocmw 30%g 10%o 50%w 10%m	5.30
504.00	ocmw 5%o 70%w 25%m	7.07
220.00	ocw m 10%o 10%w 80%m	3.09
0.00	63 GIP	0.00

Gas Rates

Choke (inches)	Pressure (psig)	Gas Rate (Mcf/d)

* Recovery from multiple tests



**TRILOBITE
TESTING, INC.**

DRILL STEM TEST REPORT

FLUID SUMMARY

Ritchie Exploration Inc

32-19s-30w Lane, Ks

8100 E 22d St n 700
Wichita, Ks 67278

Anderson 32B #1

Job Ticket: 65503

DST#: 6

ATTN: John Goldsmith

Test Start: 2016.08.11 @ 20:00:09

Mud and Cushion Information

Mud Type: Gel Chem

Cushion Type:

Oil API:

0 deg API

Mud Weight: 9.00 lb/gal

Cushion Length:

ft

Water Salinity:

27000 ppm

Viscosity: 54.00 sec/qt

Cushion Volume:

bbf

Water Loss: 9.59 in³

Gas Cushion Type:

Resistivity: 0.00 ohm.m

Gas Cushion Pressure:

psig

Salinity: 5000.00 ppm

Filter Cake: 1.00 inches

Recovery Information

Recovery Table

Length ft	Description	Volume bbf
441.00	ocmw 5%o 85%w 10%m	5.093
378.00	gocmw 30%g 10%o 50%w 10%m	5.302
504.00	ocmw 5%o 70%w 25%m	7.070
220.00	ocw m 10%o 10%w 80%m	3.086
0.00	63 GIP	0.000

Total Length: 1543.00 ft Total Volume: 20.551 bbf

Num Fluid Samples: 0

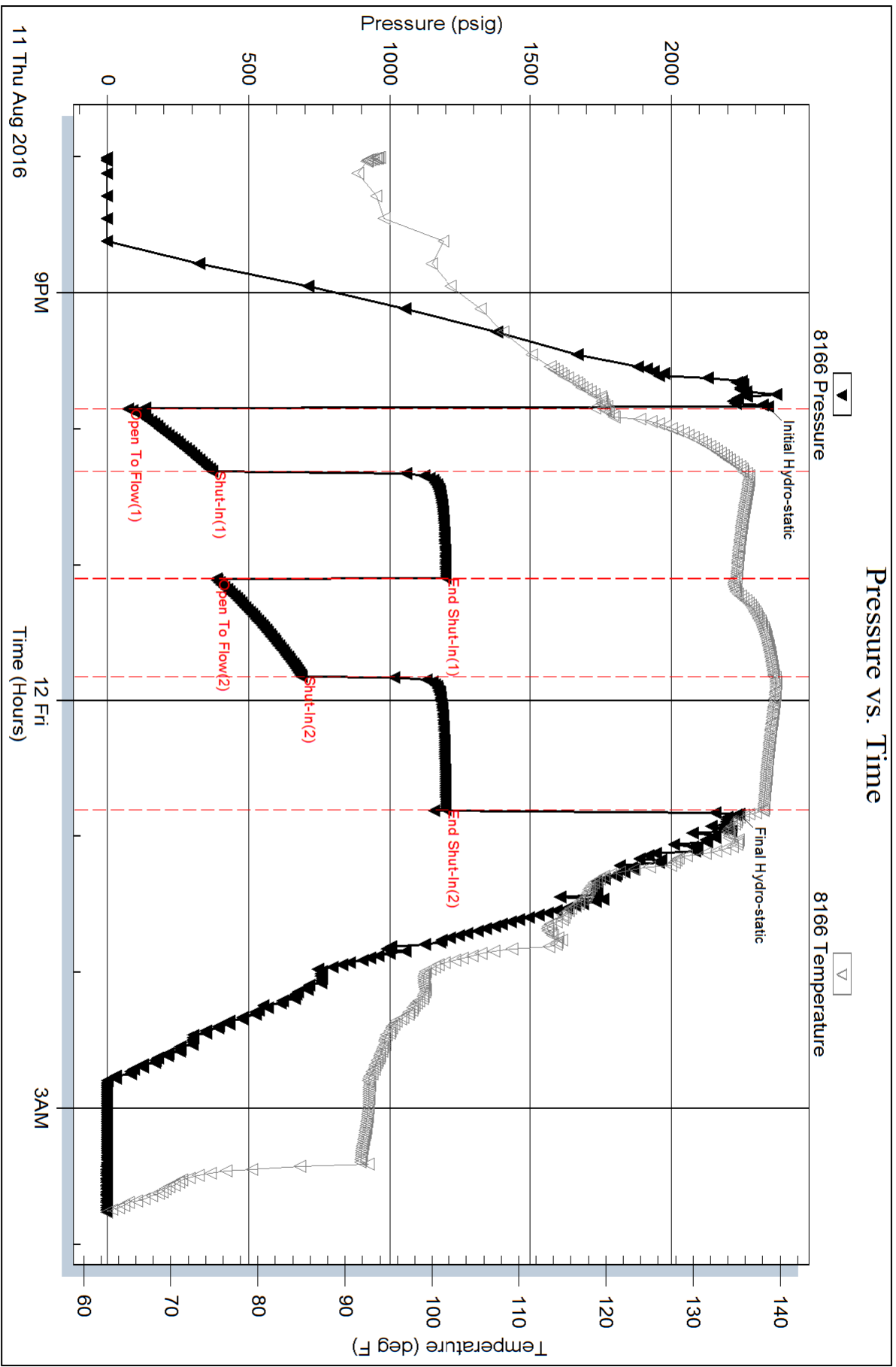
Num Gas Bombs: 0

Serial #:

Laboratory Name:

Laboratory Location:

Recovery Comments: .26@66=27000



Serial #: 8875

Inside

Ritchie Exploration Inc

Anderson 32B #1

DST Test Number: 6

