

Fall & Associates

State and Elevation Service

P.O. Box 222

Pretty Prairie, KS. 67570

785-243-7506

Date 11-1-16

Invoice Number 1101161

MURFIN DRILLING

1-7

Haller

Operator

Number

Farm Name

Rawlins-KS

7

2s

34w

660'FSL 440'FWL

County-State

S

T

R

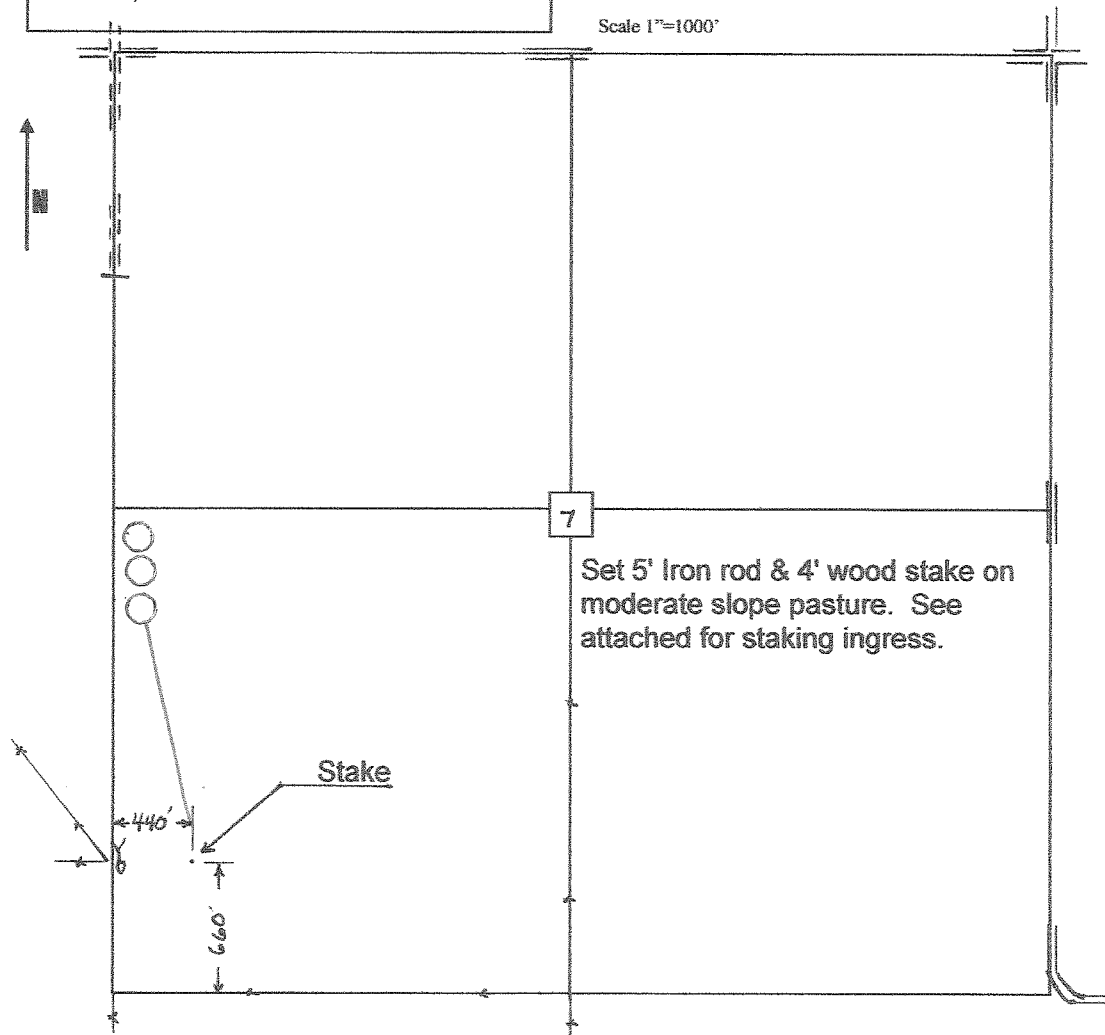
Location

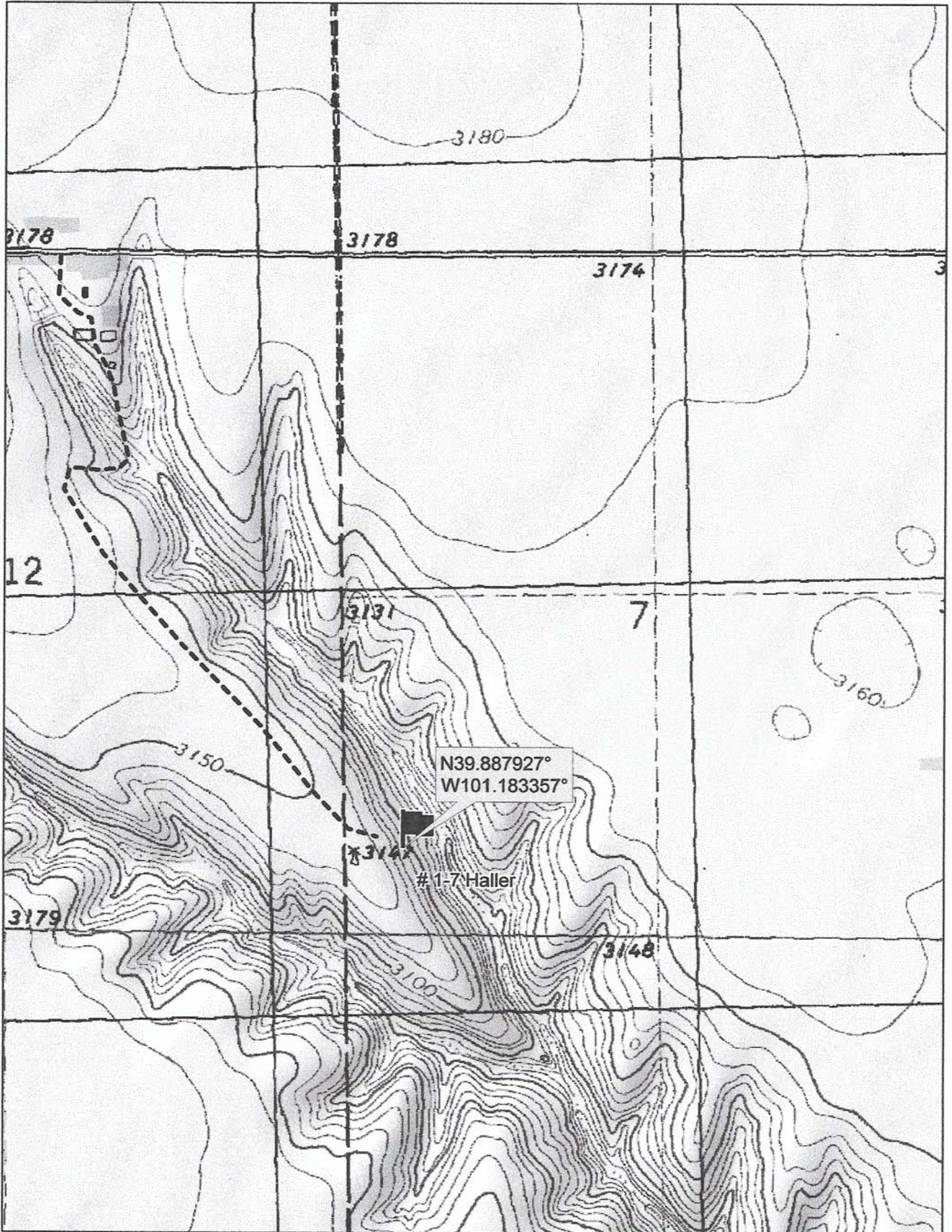
Murfin Drilling
250 N. Water
Suite 300
Wichita, KS. 67202

Elevation 3111 Gr

Ordered By: Shauna

Scale 1"=1000'





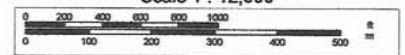
Data use subject to license.

© DeLorme. Topo North America™ 9.

www.delorme.com



Scale 1 : 12,000



1" = 1,000.0 ft

Data Zoom 13-1