



**TRILOBITE
TESTING, INC**

DRILL STEM TEST REPORT

Russell Oil Inc.
PO Box 8050
Edmond, OK 73083
ATTN: Kitt Noah

16/11s/32w Logan KS
Rumback 'A' #16-1
Job Ticket: 62693 **DST#: 4**
Test Start: 2016.09.20 @ 16:25:00

GENERAL INFORMATION:

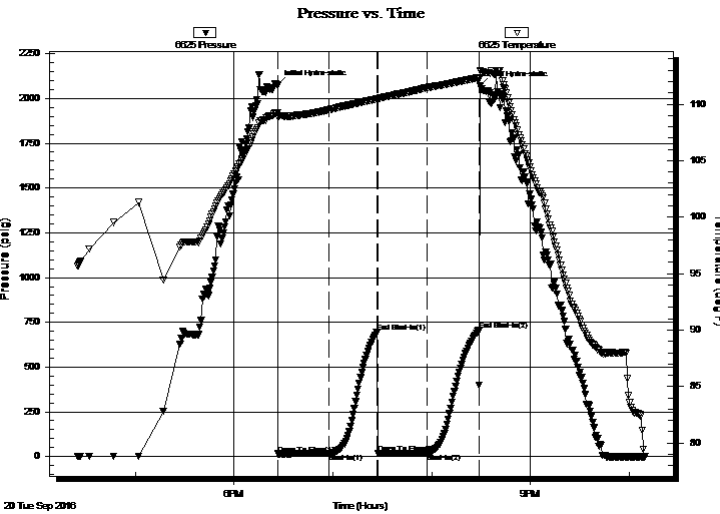
Formation: **LKC "K"**
Deviated: No Whipstock: ft (KB) Test Type: Conventional Bottom Hole (Reset)
Time Tool Opened: 18:26:45 Tester: James Winder
Time Test Ended: 22:09:15 Unit No: 83
Interval: 4253.00 ft (KB) To 4293.00 ft (KB) (TVD) Reference Elevations: 3025.00 ft (KB)
Total Depth: 4293.00 ft (KB) (TVD) 3020.00 ft (CF)
Hole Diameter: 7.88 inches Hole Condition: Fair KB to GR/CF: 5.00 ft

Serial #: 6625

Inside

Press@RunDepth: 19.08 psig @ 4254.00 ft (KB) Capacity: 8000.00 psig
Start Date: 2016.09.20 End Date: 2016.09.20 Last Calib.: 2016.09.20
Start Time: 16:25:05 End Time: 22:09:14 Time On Btm: 2016.09.20 @ 18:26:30
Time Off Btm: 2016.09.20 @ 20:29:30

TEST COMMENT: 30 - IF: Weak surface blow, dead at 8 min.
30 - ISI: No blow
30 - FF: No blow
30 - FSI: No blow



PRESSURE SUMMARY

Time (Min.)	Pressure (psig)	Temp (deg F)	Annotation
0	2075.18	109.25	Initial Hydro-static
1	14.45	108.86	Open To Flow (1)
32	16.93	109.51	Shut-In(1)
61	696.24	110.45	End Shut-In(1)
61	17.60	110.46	Open To Flow (2)
91	19.08	111.46	Shut-In(2)
122	704.29	112.33	End Shut-In(2)
123	2069.26	112.98	Final Hydro-static

Recovery

Length (ft)	Description	Volume (bbl)
15.00	Mud w/oil spots 99%m, 1%o	0.07

* Recovery from multiple tests

Gas Rates

Choke (inches)	Pressure (psig)	Gas Rate (Mcf/d)



TRILOBITE TESTING, INC.

DRILL STEM TEST REPORT

Russell Oil Inc.
 PO Box 8050
 Edmond, OK 73083
 ATTN: Kitt Noah

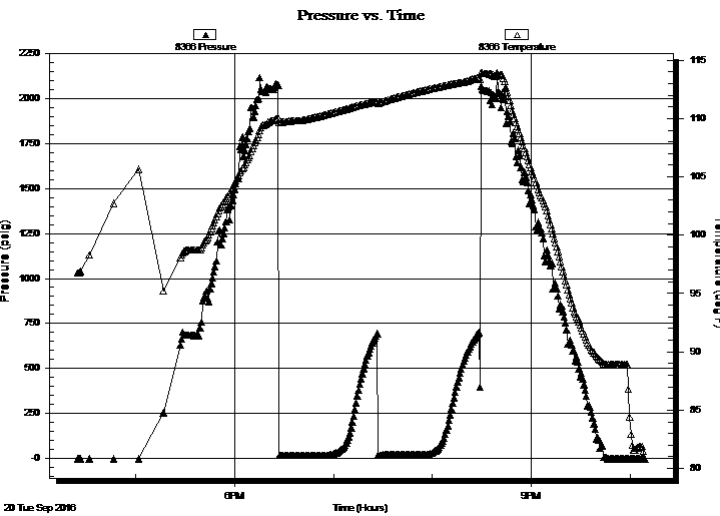
16/11s/32w Logan KS
Rumback 'A' #16-1
 Job Ticket: 62693 **DST#: 4**
 Test Start: 2016.09.20 @ 16:25:00

GENERAL INFORMATION:

Formation: **LKC "K"**
 Deviated: No Whipstock: ft (KB)
 Time Tool Opened: 18:26:45
 Time Test Ended: 22:09:15
 Interval: **4253.00 ft (KB) To 4293.00 ft (KB) (TVD)**
 Total Depth: 4293.00 ft (KB) (TVD)
 Hole Diameter: 7.88 inches Hole Condition: Fair
 Test Type: Conventional Bottom Hole (Reset)
 Tester: James Winder
 Unit No: 83
 Reference Elevations: 3025.00 ft (KB)
 3020.00 ft (CF)
 KB to GR/CF: 5.00 ft

Serial #: 8366 **Outside**
 Press@RunDepth: psig @ 4254.00 ft (KB) Capacity: 8000.00 psig
 Start Date: 2016.09.20 End Date: 2016.09.20 Last Calib.: 2016.09.20
 Start Time: 16:25:05 End Time: 22:08:44 Time On Btm:
 Time Off Btm:

TEST COMMENT: 30 - IF: Weak surface blow, dead at 8 min.
 30 - IS: No blow
 30 - FF: No blow
 30 - FS: No blow



PRESSURE SUMMARY

Time (Min.)	Pressure (psig)	Temp (deg F)	Annotation

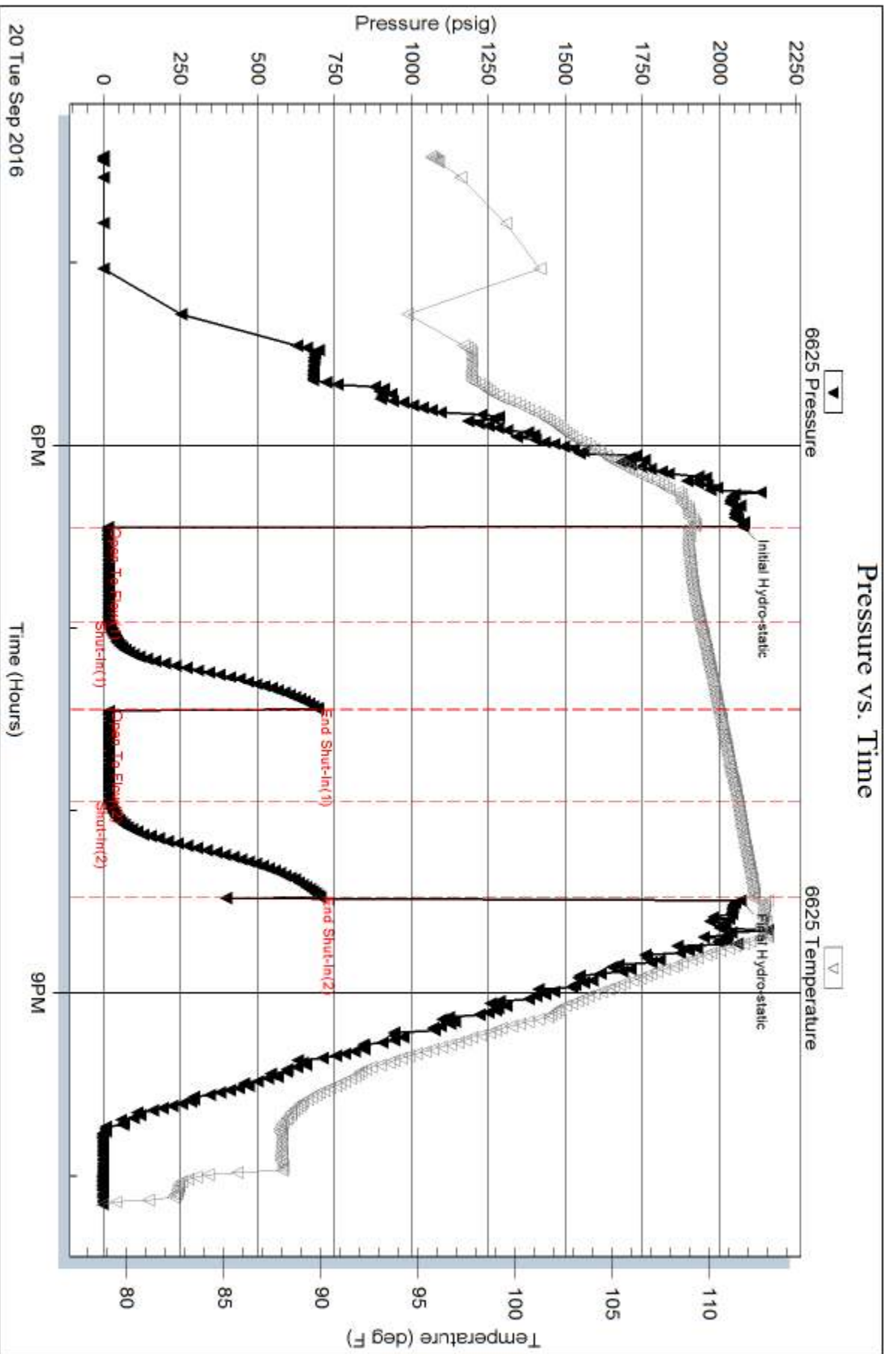
Recovery

Length (ft)	Description	Volume (bbl)
15.00	Mud w/oil spots 99% _m , 1% _o	0.07

* Recovery from multiple tests

Gas Rates

Choke (inches)	Pressure (psig)	Gas Rate (Mcf/d)

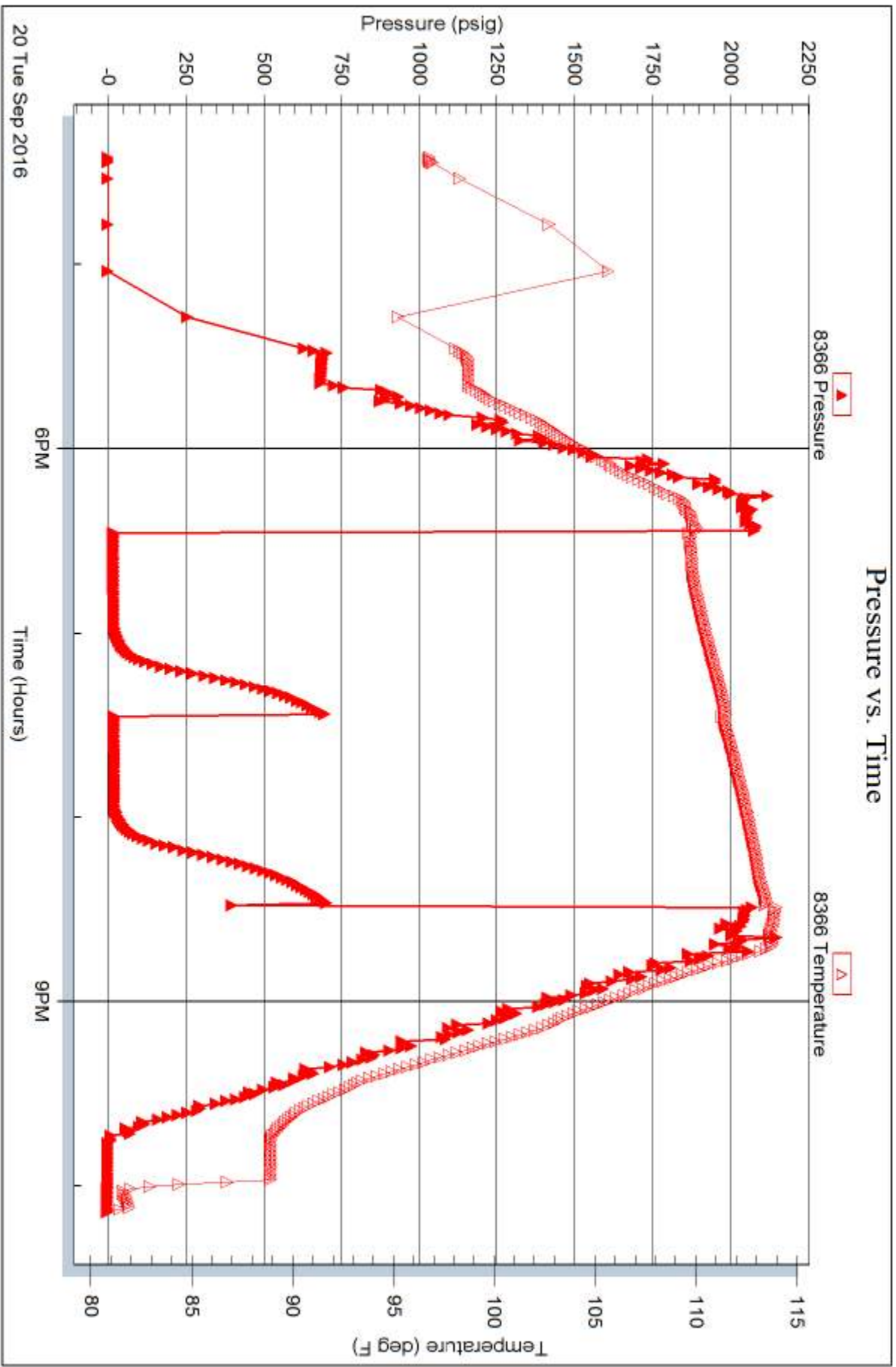


Serial #: 8366

Outside Russell Oil Inc.

Runback 'A' #16-1

DST Test Number: 4



Trilobite Testing, Inc

Ref. No: 62893

Printed: 2016.09.21 @ 07:26:49