

# KITT NOAH

PETROLEUM GEOLOGIST  
Kansas License #229



## GEOLOGIST'S REPORT

DRILLING TIME AND SAMPLE LOG

#15-109-21.474

KB-3025  
GL-3020  
MEASURED FROM  
KB

EL ELEVATION: KB 3025

OPERATOR: Russell Oil, Inc.

LEASE: Rumback "A" WELL NO: #16-1

LOCATION: 909'FS & 2188'FE

SEC: 16 TWP: 11S RNG: 32W

COUNTY: Logan STATE: Kansas

CONTRACTOR: WW Drilling Rig #2

COM: 9-14-2016 COM: 9-23-2016

RTD: 2562 (4483) LTD: 4700

B/Anhydrite 2568 (4457) 3700 to TD

Headliner 3995 (-970) 3700 to TD

Ortonite 4020 (-995) 3700 to TD

Lansing 4038 (-1013) 3700 to TD

Stark 4258 (-1233) 3700 to TD

B/KC 4316 (-1291) 3700 to TD

Marmaton 4350 (-1325) 3700 to TD

Pawnee 4450 (-1425) 3700 to TD

Cherokee 4540 (-1515) 3700 to TD

Mississippian 4634 (-1609) 3700 to TD

R/D 4700 (-1675) 3700 to TD

LTD 4700 (-1675)

Drill Stem Tests Taken: 5

Drill Stem Tests Taken: J. Winder/B. Walters

Drill Stem Tests Taken: J. Winder/B. Walters

Drill Stem Tests Taken: J. Winder/B. Walters

Drill Stem Tests Taken: J. Winder/B. Walters

Drill Stem Tests Taken: J. Winder/B. Walters

Drill Stem Tests Taken: J. Winder/B. Walters

Drill Stem Tests Taken: J. Winder/B. Walters

Drill Stem Tests Taken: J. Winder/B. Walters

Drill Stem Tests Taken: J. Winder/B. Walters

Drill Stem Tests Taken: J. Winder/B. Walters

Drill Stem Tests Taken: J. Winder/B. Walters

Drill Stem Tests Taken: J. Winder/B. Walters

Drill Stem Tests Taken: J. Winder/B. Walters

Drill Stem Tests Taken: J. Winder/B. Walters

Drill Stem Tests Taken: J. Winder/B. Walters

Drill Stem Tests Taken: J. Winder/B. Walters

Drill Stem Tests Taken: J. Winder/B. Walters

Drill Stem Tests Taken: J. Winder/B. Walters

Drill Stem Tests Taken: J. Winder/B. Walters

Drill Stem Tests Taken: J. Winder/B. Walters

Drill Stem Tests Taken: J. Winder/B. Walters

Drill Stem Tests Taken: J. Winder/B. Walters

Drill Stem Tests Taken: J. Winder/B. Walters

Drill Stem Tests Taken: J. Winder/B. Walters

Drill Stem Tests Taken: J. Winder/B. Walters

Drill Stem Tests Taken: J. Winder/B. Walters

Drill Stem Tests Taken: J. Winder/B. Walters

Drill Stem Tests Taken: J. Winder/B. Walters

Drill Stem Tests Taken: J. Winder/B. Walters

Drill Stem Tests Taken: J. Winder/B. Walters

Drill Stem Tests Taken: J. Winder/B. Walters

Drill Stem Tests Taken: J. Winder/B. Walters

Drill Stem Tests Taken: J. Winder/B. Walters

Drill Stem Tests Taken: J. Winder/B. Walters

Drill Stem Tests Taken: J. Winder/B. Walters

Drill Stem Tests Taken: J. Winder/B. Walters

Drill Stem Tests Taken: J. Winder/B. Walters

Drill Stem Tests Taken: J. Winder/B. Walters

Drill Stem Tests Taken: J. Winder/B. Walters

Drill Stem Tests Taken: J. Winder/B. Walters

Drill Stem Tests Taken: J. Winder/B. Walters

Drill Stem Tests Taken: J. Winder/B. Walters

Drill Stem Tests Taken: J. Winder/B. Walters

Drill Stem Tests Taken: J. Winder/B. Walters

Drill Stem Tests Taken: J. Winder/B. Walters

Drill Stem Tests Taken: J. Winder/B. Walters

Drill Stem Tests Taken: J. Winder/B. Walters

Drill Stem Tests Taken: J. Winder/B. Walters

Drill Stem Tests Taken: J. Winder/B. Walters

Drill Stem Tests Taken: J. Winder/B. Walters

Drill Stem Tests Taken: J. Winder/B. Walters

Drill Stem Tests Taken: J. Winder/B. Walters

Drill Stem Tests Taken: J. Winder/B. Walters

Drill Stem Tests Taken: J. Winder/B. Walters

Drill Stem Tests Taken: J. Winder/B. Walters

Drill Stem Tests Taken: J. Winder/B. Walters

Drill Stem Tests Taken: J. Winder/B. Walters

Drill Stem Tests Taken: J. Winder/B. Walters

Drill Stem Tests Taken: J. Winder/B. Walters

Drill Stem Tests Taken: J. Winder/B. Walters

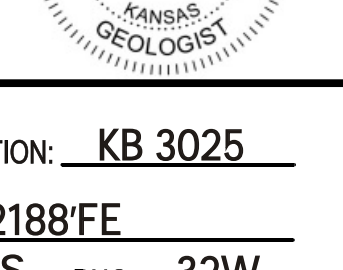
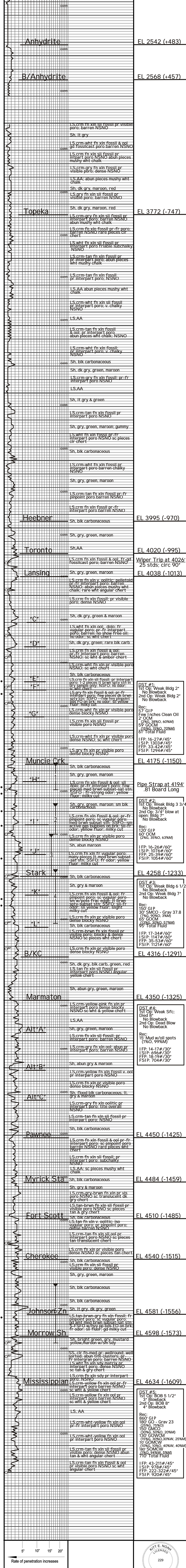
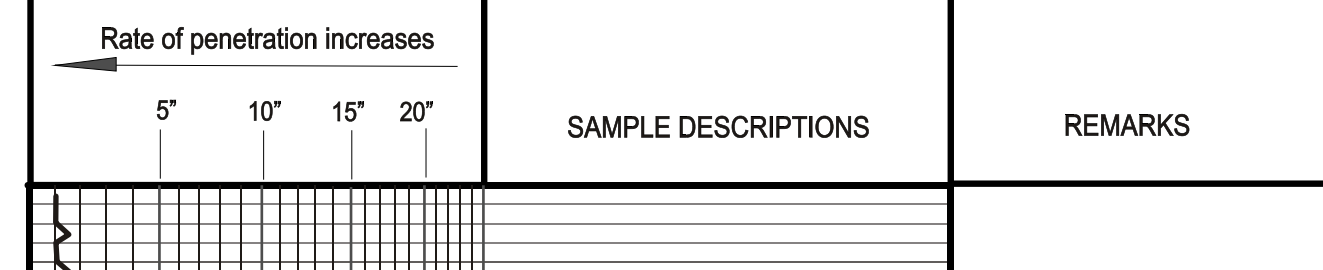
Drill Stem Tests Taken: J. Winder/B. Walters

Drill Stem Tests Taken: J. Winder/B. Walters

Drill Stem Tests Taken: J. Winder/B. Walters

Drill Stem Tests Taken: J. Winder/B. Walters

## LEGEND



ELEVATION: KB 3025

OPERATOR: Russell Oil, Inc. LOCATION: 909'FS & 2188'FE  
 LEASE: Rumback "A" WELL NO: #16-1 SEC: 16 TWP: 11S RNG: 32W  
 API: 15-109-21.474 FIELD: Rumback COUNTY: Logan STATE: Kansas