

# Fall & Associates

State and Elevation Service

P.O. Box 222

Pretty Prairie, KS. 67570

785-243-7506

Date 11-1-16

Invoice Number 1101161

MURFIN DRILLING

1-7

Haller

Operator

Number

Farm Name

Rawlins-KS

7

2s

34w

660'FSL 390'FWL

660'FSL 440'FWL

County-State

S

T

R

Location

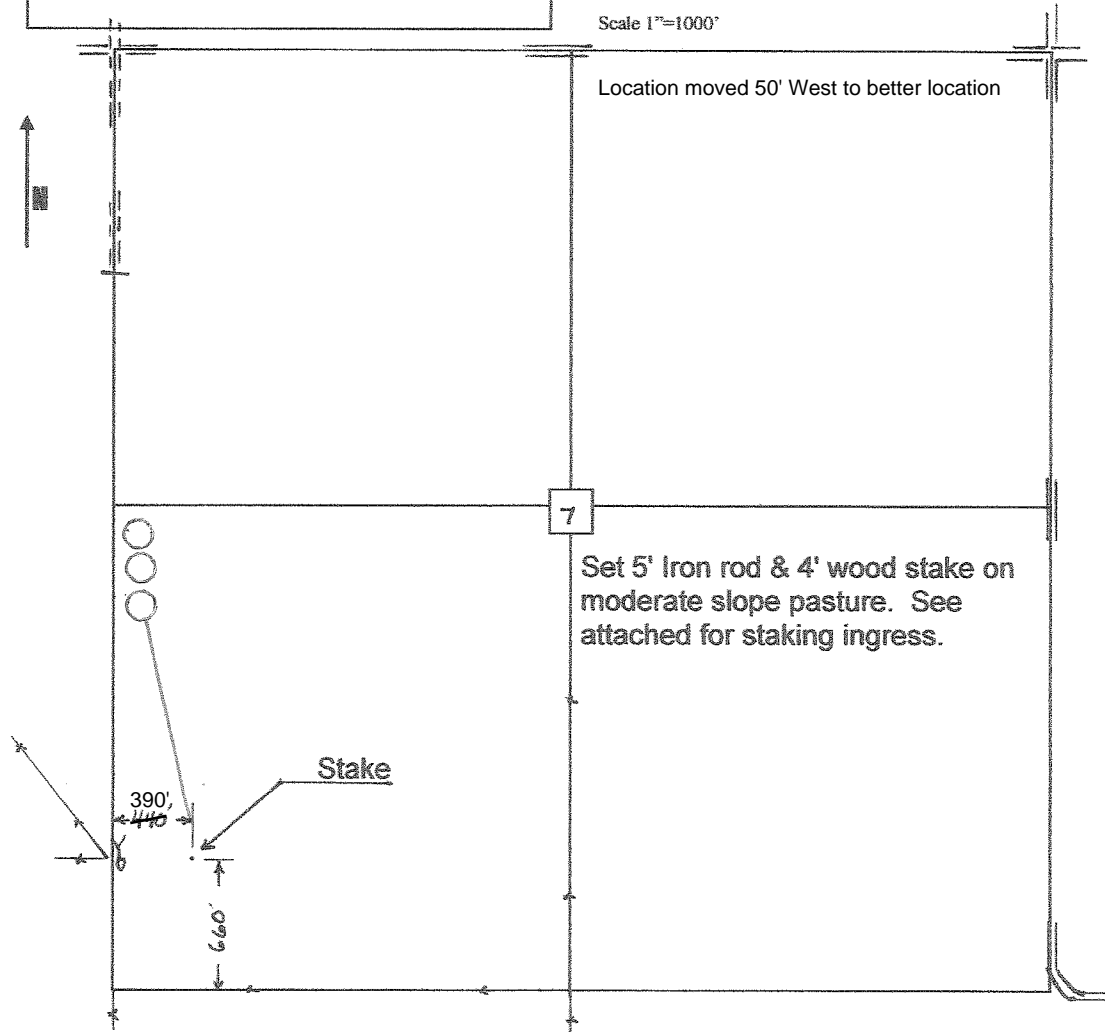
Murfin Drilling  
250 N. Water  
Suite 300  
Wichita, KS. 67202

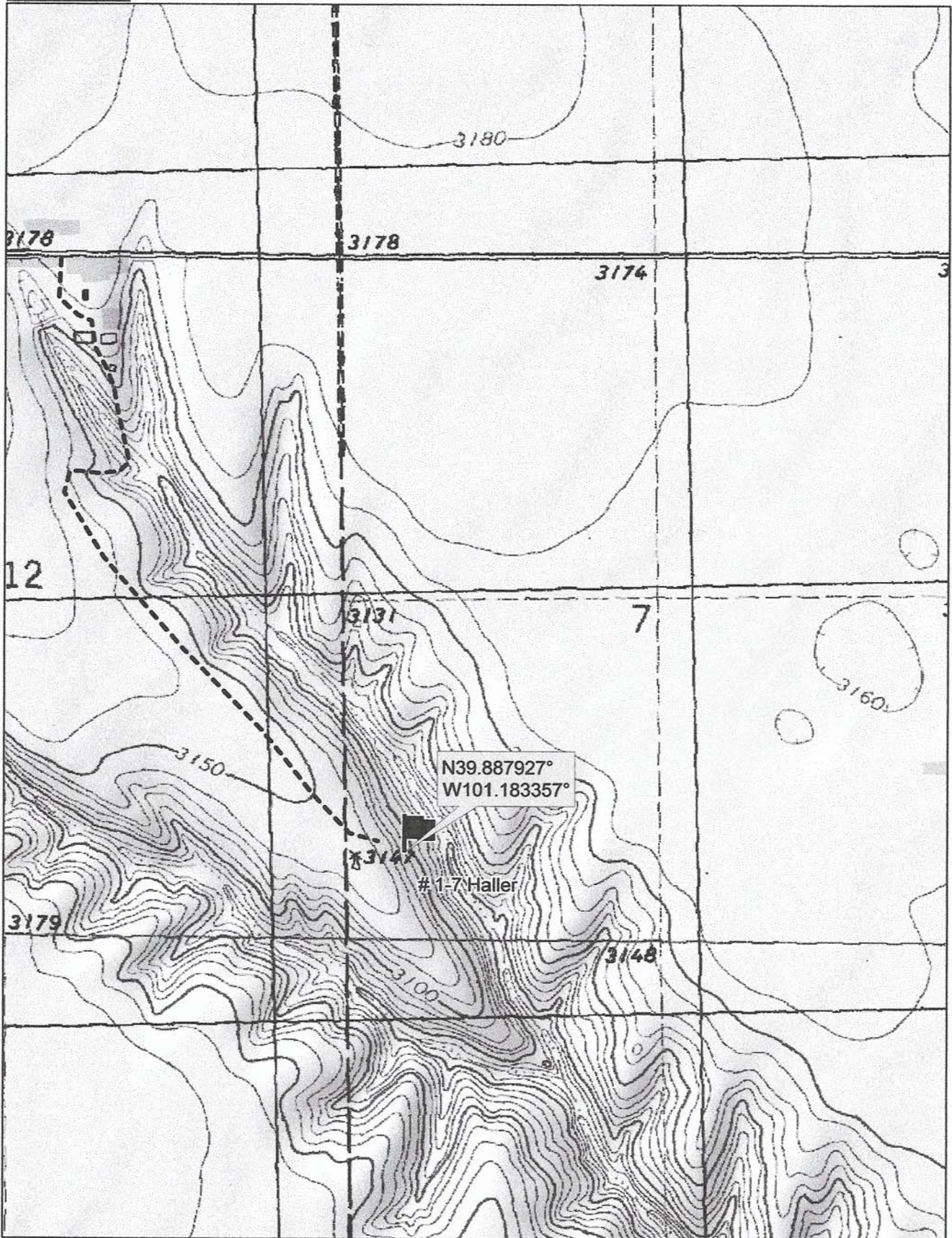
Elevation 3111 Gr

Ordered By: Shauna

Scale 1"=1000'

Location moved 50' West to better location





Data use subject to license.  
© DeLorme. Topo North America™ 9.  
www.delorme.com

