

GEOLOGISTS REPORT
DRILLING TIME AND SAMPLE LOG

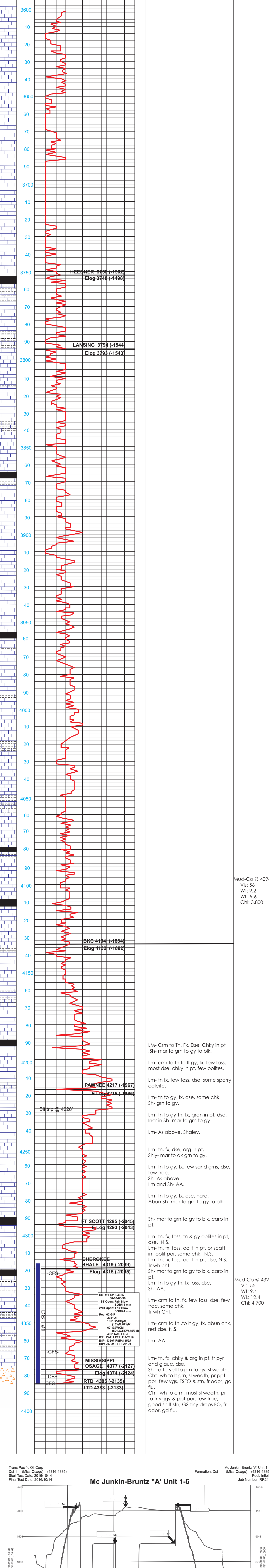
| | | | |
|-----------------------------|-------------------------------|---|------------|
| Geologist on Well | Bryce Bidleman | ELEVATIONS | KB 2250 |
| LEASE | McJunkin-Bruntz A Unit 1-6 | DF | |
| FIELD | Schaben | GL 2243 | |
| LOCATION | 1473 FNL 2607 FEEL | Measurements Are All From Kelly Bushing | |
| SEC. 6 | TWSP 20S | RGE 21W | |
| COUNTY | Ness | STATE | KANSAS |
| CONTRACTOR | Pickrell Drilling Rig #10 | | |
| SPUD | 10/07/2016 | COMP | 10/17/2016 |
| RTD | 4335 | LTD | 4383 |
| MUD UP | 3300 | TYPE MUD | Fresh |
| SAMPLES SAVED FROM | 4200 | TO | RTD |
| DRILLING TIME KEPT FROM | 3600 | TO | RTD |
| SAMPLES EXAMINED FROM | 4200 | TO | RTD |
| GEOLOGICAL SUPERVISION FROM | 4075 | | |
| REFERENCE WELL | Pickrell Schaben #2 6-20S-21W | | |
| FORMATION | | Sample Tops | Elog Tops |
| Amhydrite | 1481 (+769) | 1479 (+771) | +8 |
| Heehner | 3752 (-1502) | 3748 (-1498) | +4 |
| Lansing | 3796 (-1546) | 3793 (-1543) | +3 |
| Base Kans Civ | 4138 (-1888) | 4132 (-1882) | +6 |
| Fort Scott | 4295 (-2045) | 4293 (-2043) | +2 |
| Cherokee Shale | 4319 (-2069) | 4315 (-2065) | +4 |
| Mississippi Osage | 4377 (-2127) | 4373 (-2123) | +4 |
| Mississippi | 4385 (-2135) | 4383 (-2133) | +2 |

REMARKS The McJunkin-Bruntz A Unit #1-6 was drilled on a seismic feature and encountered significant thinning from Anhydrite to lower Pennsylvanian resulting in a Mississippian Osage top 18 feet high to nearby abandoned Mississippi producer. Due to positive structural position and encouraging DST results, 5 1/2" production casing was set six feet off bottom and the well will be completed in open hole.

Respectfully,
 W. Bryce Bidleman

| | |
|-----------------------|---------------|
| CONDUCTOR | N/A |
| SURFACE | 8 5/8" @ 217' |
| PRODUCTION | 5 1/2" @ 437' |
| WV | 142 SS |
| ELECTRICAL SURVEYS | |
| DIL. DUCK ML. PE. RAG | |
| PICTURE | |

| | | | | | | | |
|-----------|-----------|-----------|-------|---------|-----------|-------|----------|
| ANHYDRITE | SANDSTONE | LIMESTONE | SHALE | CARB SH | CHERTY LS | CHERT | DOLomite |
|-----------|-----------|-----------|-------|---------|-----------|-------|----------|



Trans Pacific Oil Corp (Miss-Osage) (4316-4385) Mc Junkin-Bruntz 'A' Unit 1-6
 Start Test Date: 2016/10/14 Pool: Infield
 Final Test Date: 2016/10/14 Job Number: RR244

