

**LINN OPERATING INC.
PICKLES 1-17**

1899' FNL
2208' FEL
SE/4 OF NW/4 OF SW/4 OF NE/4
SECTION 17, T-22-S, R-34-W, FINNEY CO., KS.
LATITUDE: 38°08'35.78104" N
LONGITUDE: 101°04'25.59221" W
GROUND ELEVATION: 2965.6'



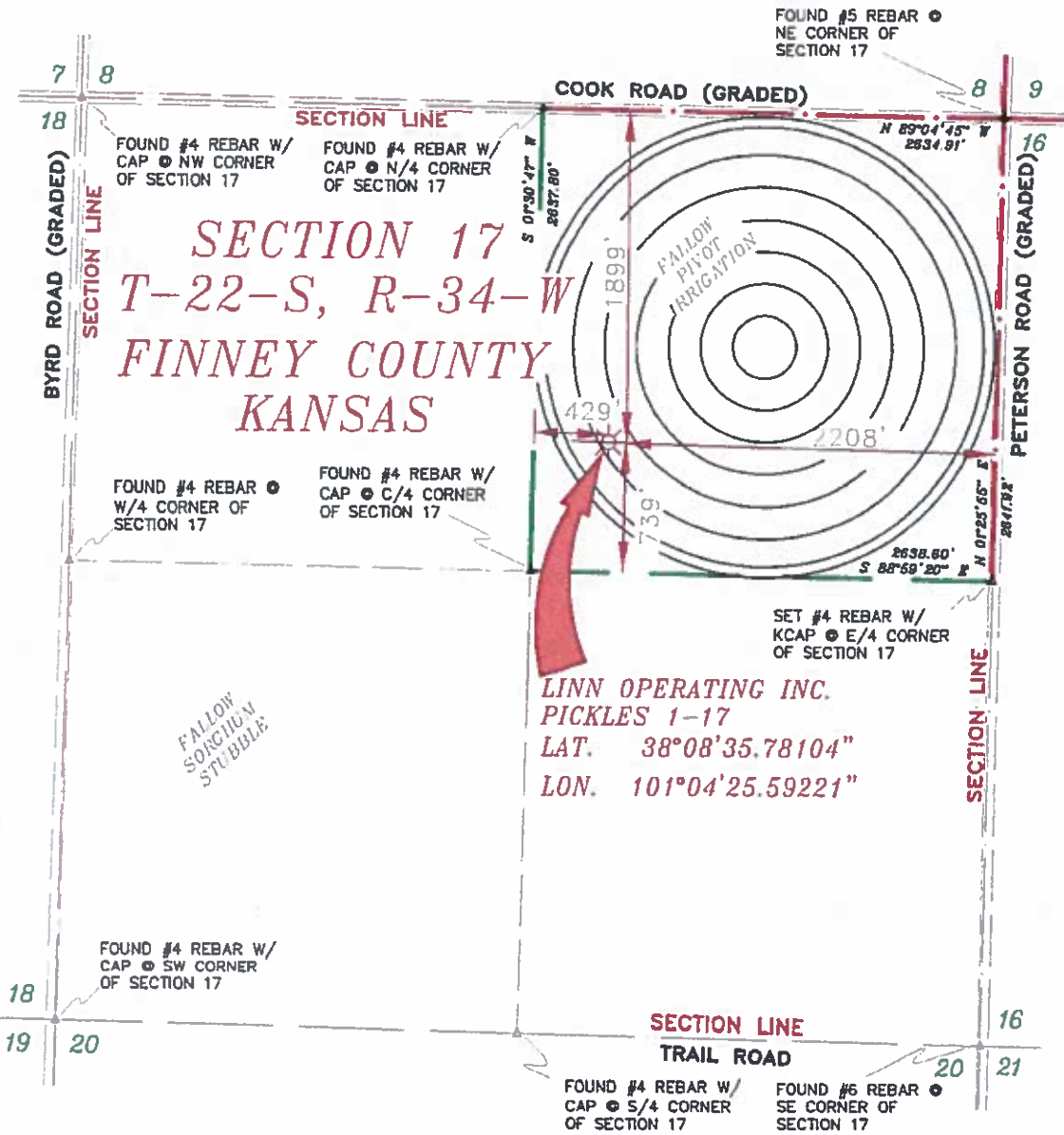
**Keller
Surveying &
Mapping**

2390 D LAKEVIEW DRIVE
AMARILLO, TEXAS 79109
PH: (806) 418-3253

DRAWN BY: MKK
APPROVED BY: JOK
SCALE: 1" = 1000'
DATE: 11/03/16



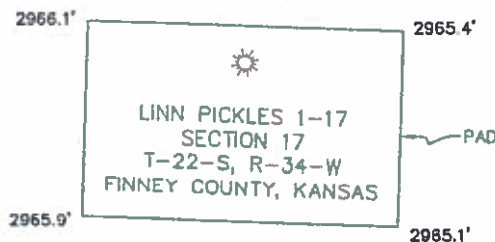
2225 W OKLAHOMA AVE.
OLYSSSES KANSAS 67880
PH: (620) 356-6940
FAX: (620) 356-6950

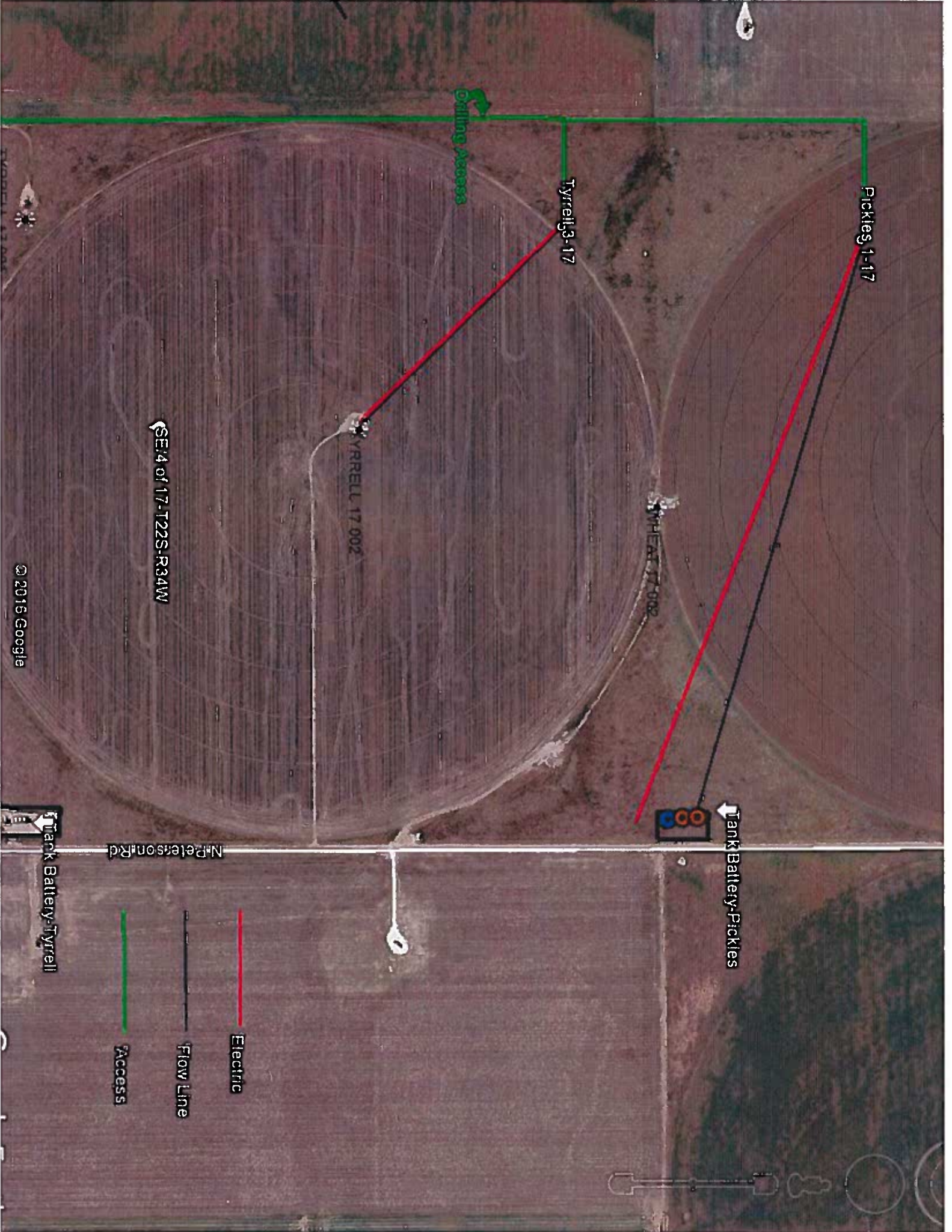


- NOTES:**
- 1) THIS PLAN DOES NOT REPRESENT A TRUE BOUNDARY SURVEY. THE FOOTINGS AND TIES SHOWN ARE FROM LINES OF OCCUPATION WHICH MAY NOT BE ACTUAL PROPERTY LINES.
 - 2) CONTRACTOR TO CONTACT SURVEYOR FOR FORECUT UTILITY LOCATIONS PRIOR TO ANY EXCAVATION OR CONSTRUCTION.
 - 3) UAD 27 LAT-1010

**LINN OPERATING INC.
PICKLES 1-17
LAT. 38°08'35.78104"
LON. 101°04'25.59221"**

**LINN OPERATING INC.
PICKLES 1-17
SEC. 17, T-22-S, R-34-W,
FINNEY COUNTY, KANSAS**





Pickles 1-17

Tyrell 3-17

Drilling Access

Tank Battery-Pickles

Tank Battery-Tyrell

N. Peterson Rd

SE 1/4 of 17-T22S-R34W

TYRRELL 17 002

SHEAF 17-002

© 2015 Google

- Electric
- Flow Line
- Access