

**LINN OPERATING INC.
TYRRELL 3-17**

2293' FSL
2247' FEL
SE/4 OF NW/4 OF NW/4 OF SE/4
SECTION 17, T-22-S, R-34-W, FINNEY CO., KS.
LATITUDE: 38°08'25.06429" N
LONGITUDE: 101°04'26.04330" W
GROUND ELEVATION: 2965.7'



**Keller
Surveying &
Mapping**

2330 B LAKYVIEW DRIVE
AMARILLO TEXAS 79109
PH (806)418-5253

DRAWN BY: MFK
APPROVED BY: JOK
SCALE: 1" = 1000'
DATE: 11/3/16

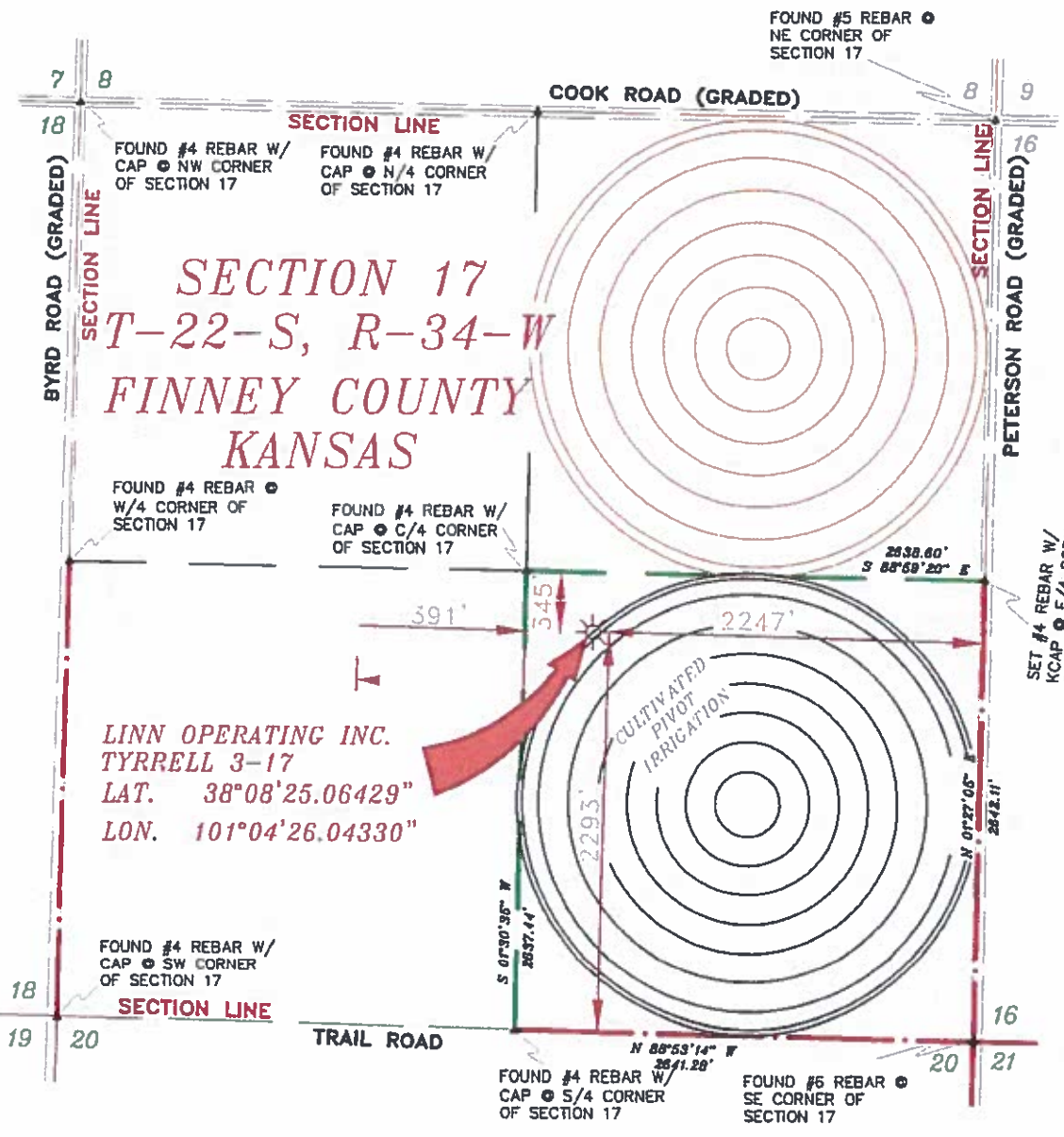


2225 W OKLAHOMA AVE.
LULYSE'S KANSAS 67880
PH: (620)356-6940
FAX: (620)356-6950



NOTES:

- 1) THIS PLAT DOES NOT REPRESENT A TRUE BENCHMARK SURVEY. THE FOOTCAGES AND TIES SHOWN ARE FROM LISTS OF OCCUPATION WHICH MAY NOT BE ACTUAL PROPERTY LINES.
- 2) CONSULTATION TO CONTACT ONE-CALL FOR FOREIGN UTILITY LOCATIONS PRIOR TO ANY EXCAVATION OR CONSTRUCTION.
- 3) MAG 27 UN-L-16763

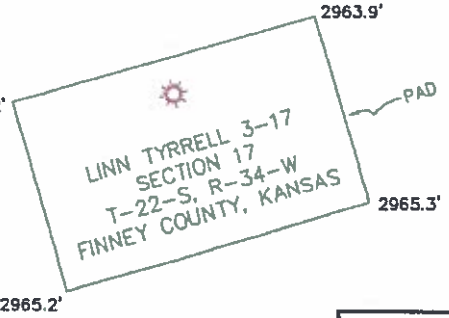


**SECTION 17
T-22-S, R-34-W
FINNEY COUNTY
KANSAS**

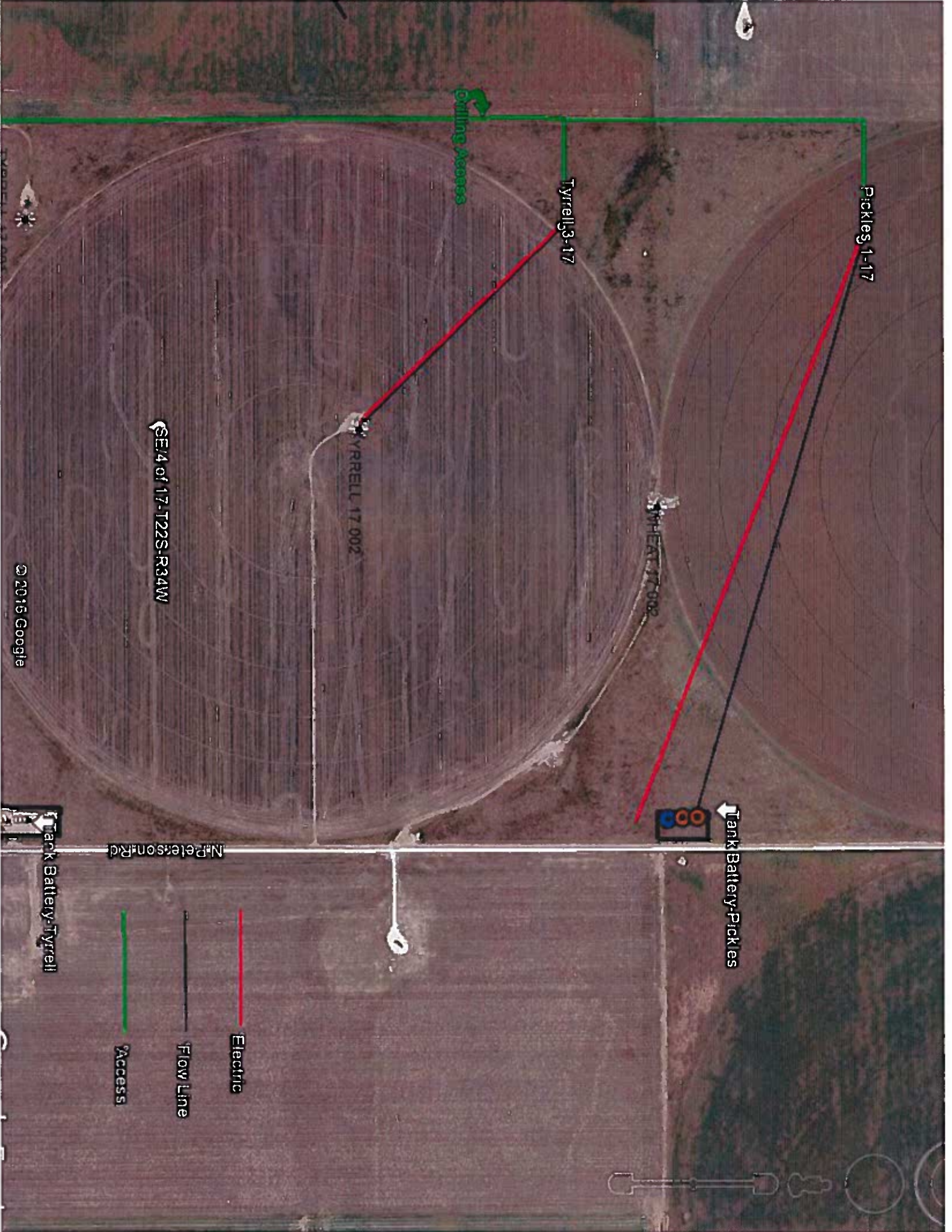
**LINN OPERATING INC.
TYRRELL 3-17
LAT. 38°08'25.06429"
LON. 101°04'26.04330"**



JOHN DAVID KELLER, L.S. NO. 1518



**LINN OPERATING INC.
TYRRELL 3-17
SEC. 17, T-22-S, R-34-W,
FINNEY COUNTY, KANSAS**



Pickles 1-17

Tyrrell 3-17

Culling Access

TYRRELL 17 002

SHEAT 17 002

SE4 of 17-T22S-R34W

Tank Battery-Pickles

N. Peterson Rd

Tank Battery-Tyrrell

Electric

Flow Line

Access

© 2015 Google