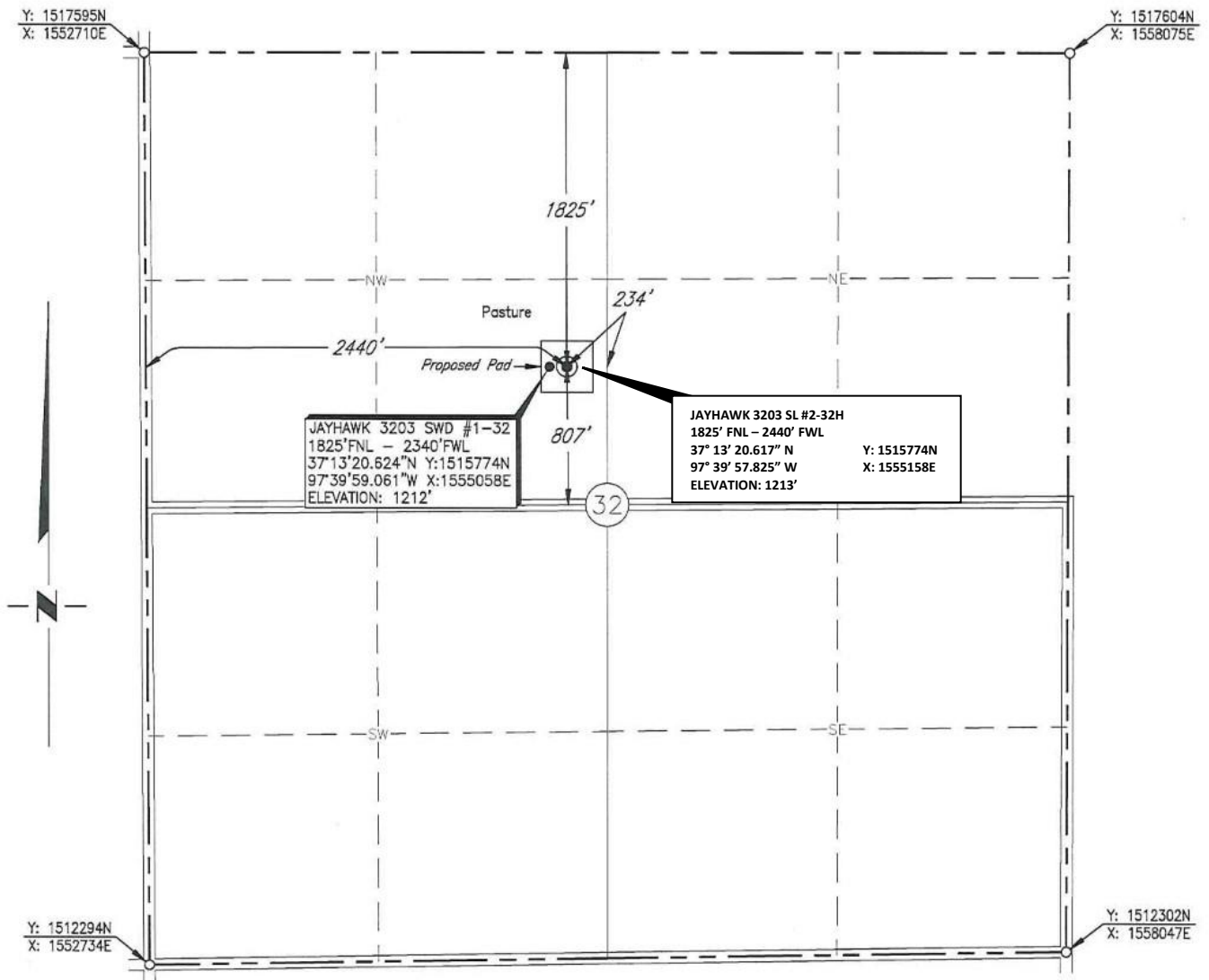


SUMNER County, Kansas
 1825'FNL - 2440'FWL Section 32 Township 32S Range 3W I.M.



Scale: 1" = 1000'

Date Staked: November 7, 2016

GPS Observation: Latitude 37°13'20.617" N
 Longitude 97°39'57.825" W
 Latitude 37.22239 N
 Longitude 97.66606 W

State Plane NAD83 Y:1515774N
 Kansas South Zone: X:1555158E

Operator: DESTINY PETROLEUM LLC Elevation: 1213'

Lease Name: JAYHAWK 3203 SL Well No.: 2-32

Topography & Vegetation: Pasture

Alternate Location Stakes Set: No Good Drill Site? Yes

Best Accessibility to Location: From the West Line

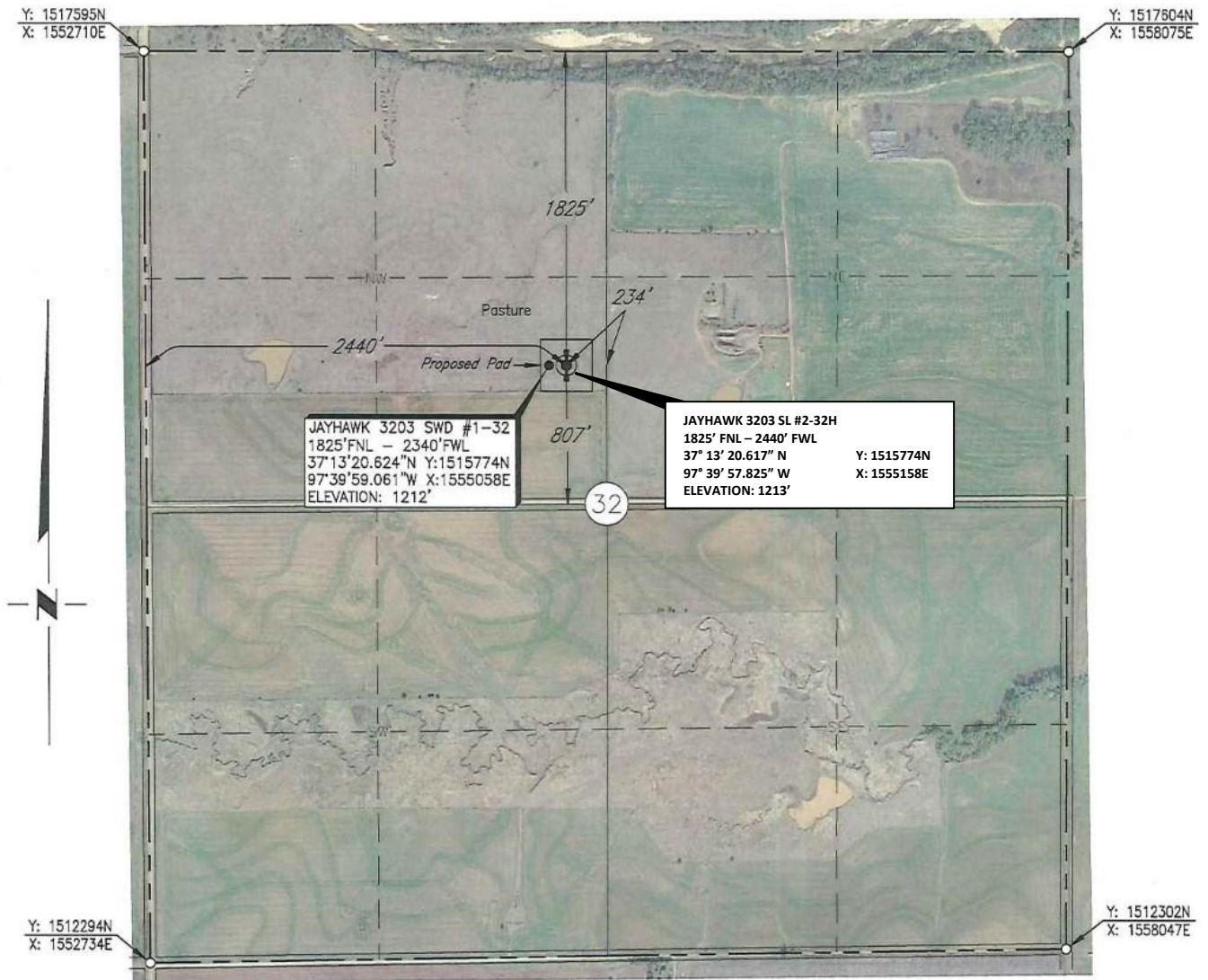
Distance & Direction
 from Hwy Jct or Town: From the town of Milan; Thence south 2 miles to the Northwest Corner of Section 32.

D. Mike Dossey
 1530 SW 89th St., Bldg. C-3
 Oklahoma City, OK 73159

This drawing does not
 constitute a monumented
 survey or a plat of survey.



SUMNER County, Kansas
 1825'FNL - 2440'FWL Section 32 Township 32S Range 3W I.M.



Scale: 1" = 1000'

Date Staked: November 7, 2016

GPS Observation: Latitude 37° 13' 20.617" N
 Longitude 97° 39' 57.825" W
 Latitude 37.22239 N
 Longitude 97.66606 W

State Plane NAD83 Y:1515774N
 Kansas South Zone: X:1555158E

Operator: DESTINY PETROLEUM LLC Elevation: 1213'

Lease Name: JAYHAWK 3203 SL Well No.: 2-32

Topography & Vegetation: Pasture

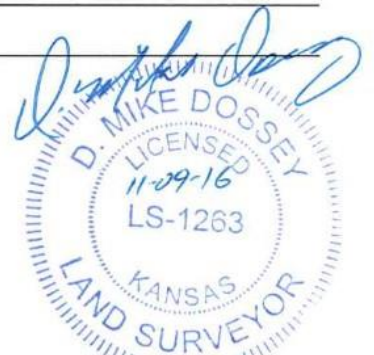
Alternate Location Stakes Set: No Good Drill Site? Yes

Best Accessibility to Location: From the West Line

Distance & Direction
 from Hwy Jct or Town: From the town of Milan; Thence south 2 miles to the Northwest Corner of Section 32.

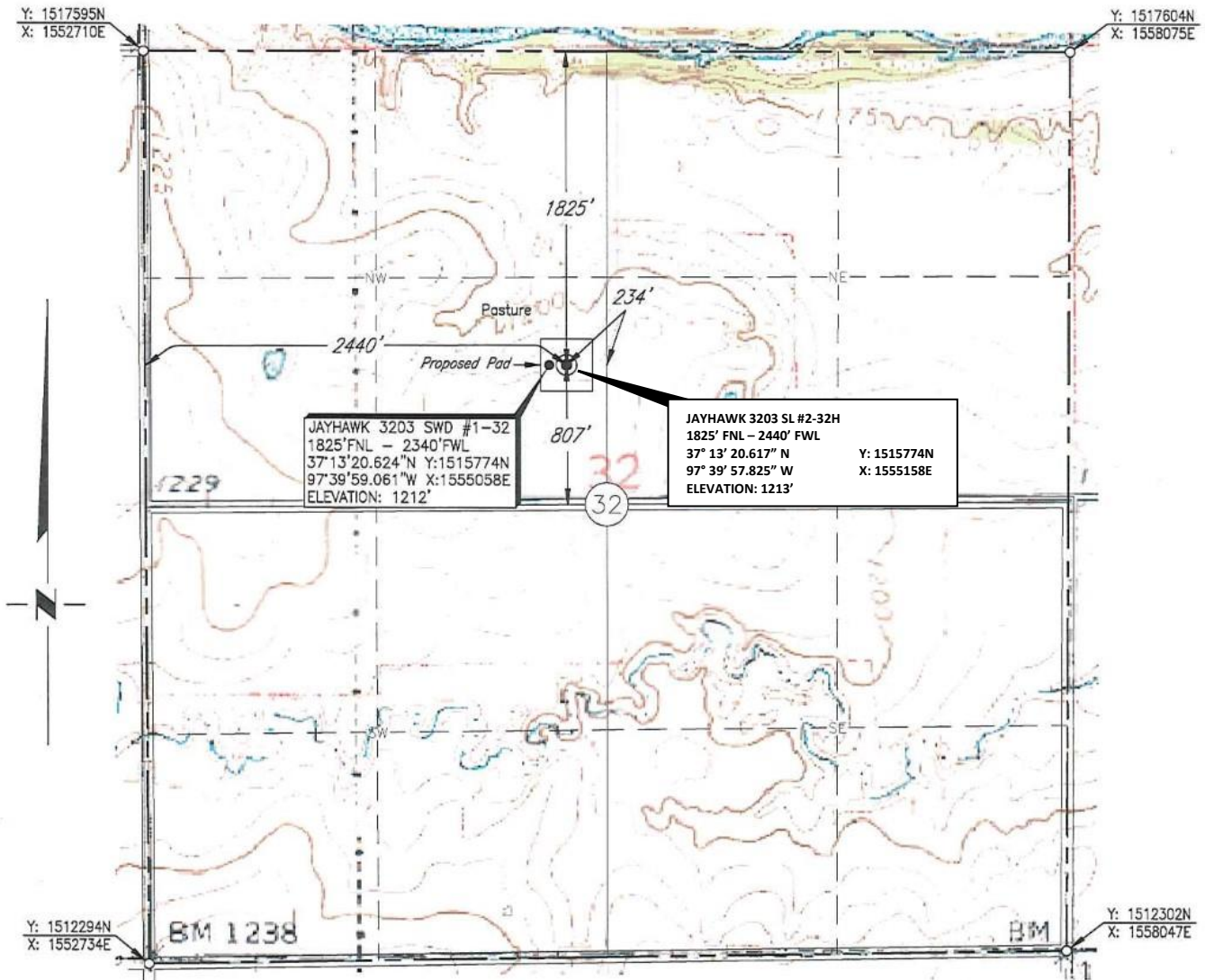
D. Mike Dossey
 1530 SW 89th St., Bldg. C-3
 Oklahoma City, OK 73159
 Ph. (405) 692-7348

This drawing does not constitute a monumented survey or a plat of survey, no corners were set during this construction staking.



SUMNER County, Kansas

1825'FNL - 2440'FWL Section 32 Township 32S Range 3W I.M.



Scale: 1" = 1000'

Date Staked: November 7, 2016

GPS Observation: Latitude 37°13'20.617" N
 Longitude 97°39'57.825" W
 Latitude 37.22239 N
 Longitude 97.66606 W

State Plane NAD83 Y:1515774N
 Kansas South Zone: X:1555158E

Operator: DESTINY PETROLEUM LLC Elevation: 1213'

Lease Name: JAYHAWK 3203 SL Well No.: 2-32

Topography & Vegetation: Pasture

Alternate Location Stakes Set: No Good Drill Site? Yes

Best Accessibility to Location: From the West Line

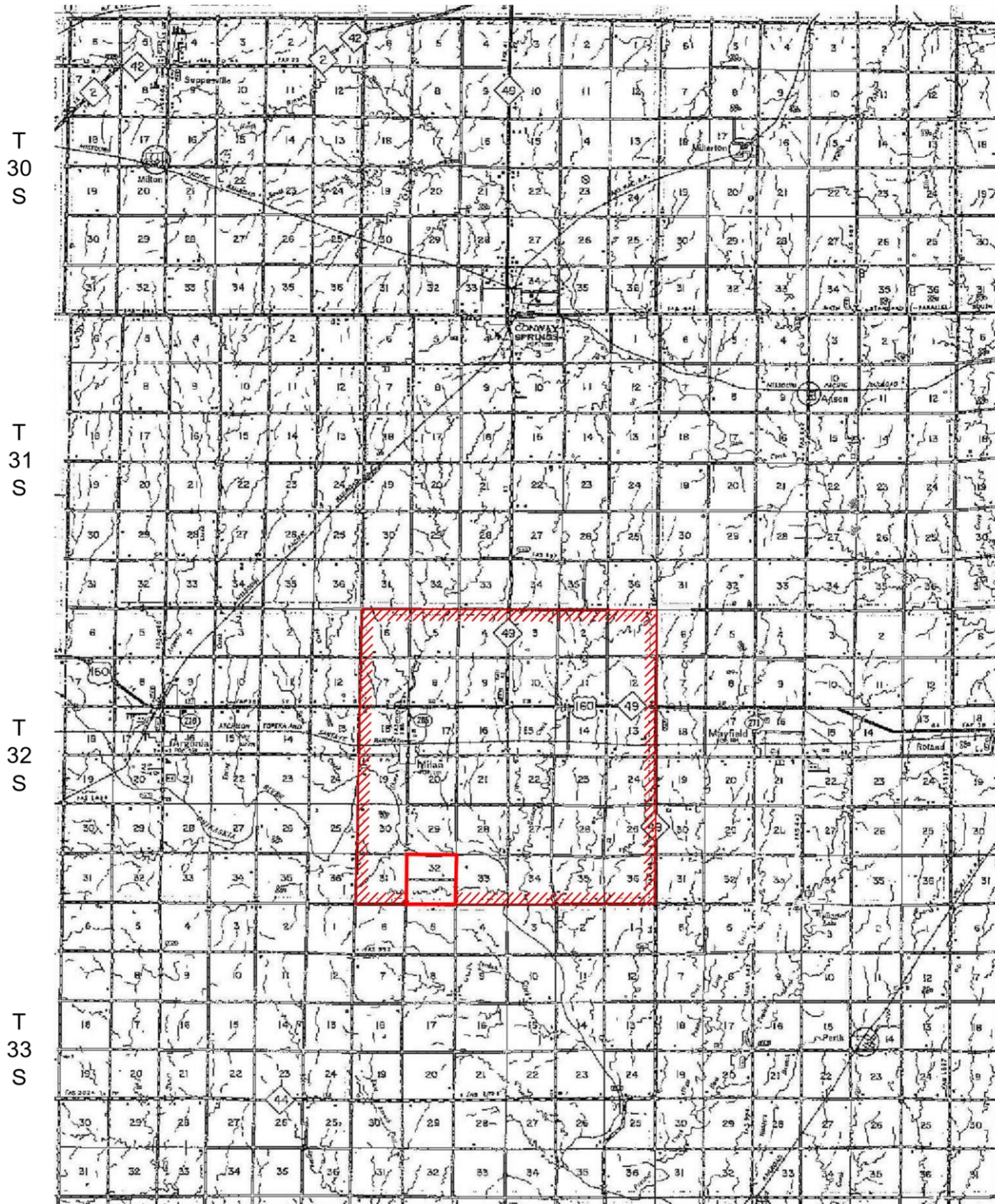
Distance & Direction
 from Hwy Jct or Town: From the town of Milan; Thence south 2 miles to the Northwest Corner of Section 32.

D. Mike Dossey
 1530 SW 89th St., Bldg. C-3
 Oklahoma City, OK 73159
 Ph. (405) 692-7348

This drawing does not constitute a monumented survey or a plat of survey, no corners were set during this construction staking.



JOB NO.: 1614263_TOPO				
DATE: 11/08/16				
DRAWN BY: T.A.W.	NO.	REVISION	DATE	BY



R 4 W

R 3 W

R 2 W

PLAT SHOWING
 VICINITY MAP FOR
 SECTION 32, T32S - R3W
 SUMNER COUNTY, KANSAS

NO.	REVISION	DATE	BY
SURVEYED BY:		D.O.	
DRAWN BY:		T.A.W.	
APPROVED BY:		D.M.D.	

DESTINY PETROLEUM LLC

SCALE:	1" = 3 Miles
DATE:	11/08/16
JOB NO.:	1614263
DWG. NO.:	1614.263_VMAP
AFE. NO.:	
SHEET	1 OF 1