

**General**

Well ID 126317  
 Well Misak 3404 1-30H  
 Company Sandridge  
 Operator - \* -  
 Lease Name Misak 3404 1-30H  
 Elevation 1217.00 ft  
 Production Method Other  
 Dataset Description  
 Shot two

Comment

**Surface Unit**

Manufacturer - \* -  
 Unit Class Conventional  
 Unit API Number - \* -  
 Measured Stroke Length - \* - in  
 Rotation CW  
 Counter Balance Effect (Weights Level) - \* - Klb  
 Weight Of Counter Weights 2000 lb

**Prime Mover**

Motor Type Electric  
 Rated HP - \* - HP  
 Run Time 24 hr/day  
 MFG/Comment - \* -

**Electric Motor Parameters**

Rated Full Load AMPS - \* -  
 Rated Full Load RPM - \* -  
 Synchronous RPM 1200  
 Voltage - \* -  
 Hertz 60  
 Phase 3  
 Power Consumption 5  
 Power Demand 8 \$/KW

**Tubulars**

Tubing OD - \* - in  
 Casing OD 7.000 in  
 Average Joint Length 31.700 ft  
 Anchor Depth - \* - ft  
 Kelly Bushing 20.00 ft

**Pump**

Plunger Diameter - \* - in  
 Pump Intake Depth - \* - ft  
 \*\*Total Rod Length > Pump Depth

**Polished Rod**

Polished Rod Diameter - \* - in

**Rod String**

	Top Taper	Taper 2	Taper 3	Taper 4	Taper 5	Taper 6
Rod Type	- * -	- * -	- * -	- * -	- * -	- * -
Rod Length	- * -	- * -	- * -	- * -	- * -	- * - ft
Rod Diameter	- * -	- * -	- * -	- * -	- * -	- * - in
Rod Weight	0.0	0.0	0.0	0.0	0.0	0.0 lb

Total Rod Length 0  
 Total Rod Weight 0.00

Damp Up 0.05  
 Damp Down 0.05

**Conditions**

**Pressure**

Static BHP 656.7 psi (g)  
 Static BHP Method Acoustic  
 Static BHP Date 11/01/2016

Producing BHP - \* - psi (g)  
 Producing BHP Method Acoustic  
 Producing BHP Date 11/01/2016  
 Formation Depth 5192.00 ft

**Surface Producing Pressures**

Tubing Pressure - \* - psi (g)  
 Casing Pressure 67.5 psi (g)

**Casing Pressure Buildup**

Change in Pressure -0.142 psi  
 Over Change in Time 1.25 min

**Production**

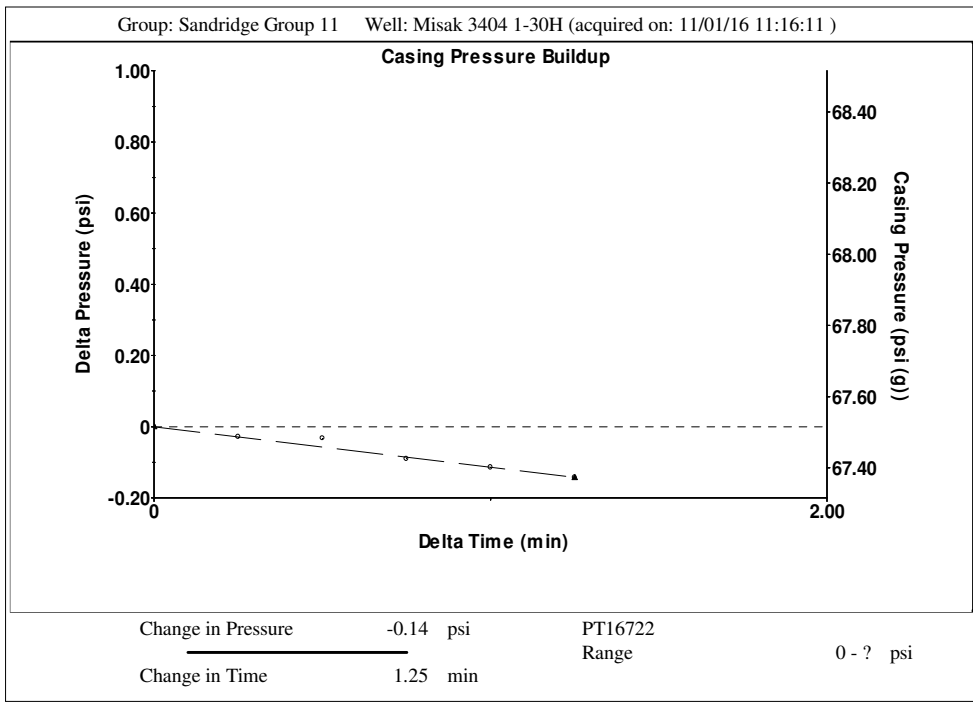
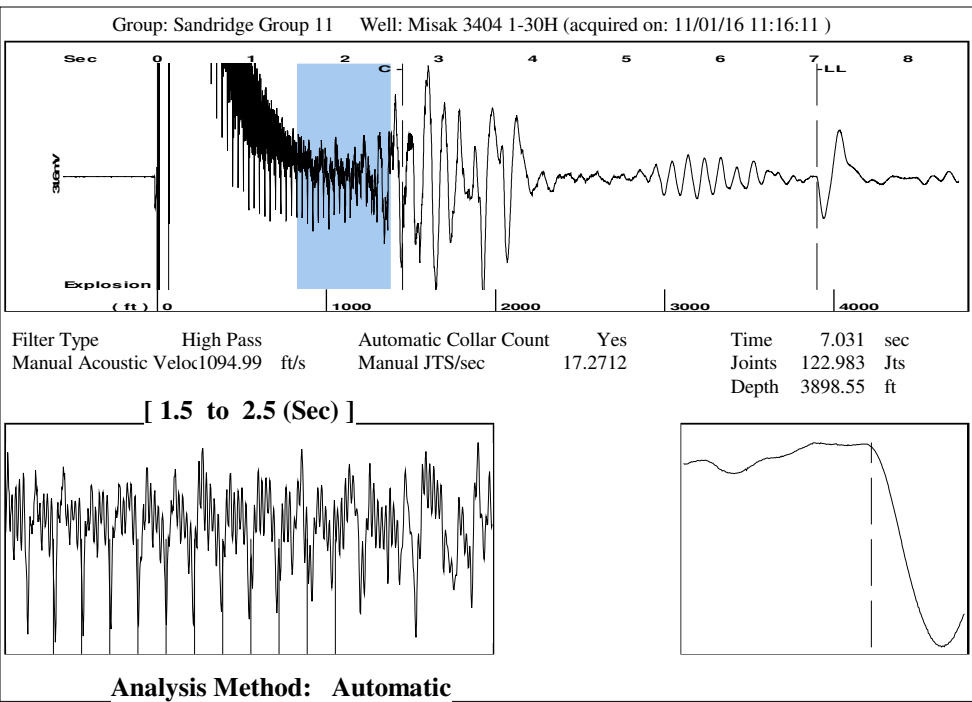
Oil Production 0 BBL/D  
 Water Production 1 BBL/D  
 Gas Production - \* - Mscf/D  
 Production Date 10/31/2016

**Temperatures**

Surface Temperature 70 deg F  
 Bottomhole Temperature 150 deg F

**Fluid Properties**

Oil API 40 deg.API  
 Water Specific Gravity 1.05 Sp.Gr.H2O



Group: Sandridge Group 11 Well: Misak 3404 1-30H (acquired on: 11/01/16 11:16:11)

Production Current	Potential	Casing Pressure	Static
Oil 0	- * - BBL/D	67.5 psi (g)	
Water 1	- * - BBL/D	Casing Pressure Buildup	Oil Column Height
Gas - * -	- * - Mscf/D	-0.142 psi	MD 0 ft
		1.25 min	
IPR Method	Vogel	Gas/Liquid Interface Pressure	Water Column Height
PBHP/SBHP	- * -	- * - psi (g)	MD - * - ft
Production Efficiency	0.0		
Oil 40 deg.API		Liquid Level Depth	
Water 1.05 Sp.Gr.H2O		3898.55 ft	
Gas 0.87 Sp.Gr.AIR		Tubing Intake Depth	
		- * - ft	
Acoustic Velocity	1108.96 ft/s	Formation Depth	
		5192.00 ft	
		Static BHP	
		- * - psi (g)	

Misak 3404 1-30H

