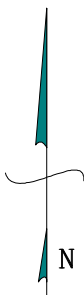


**314 Acre Drilling Unit**

1 inch = 2000 feet



**Unit Description:**

NW/4 of Section 32, T32S, R3W and SW/4 of Section 29, T32S, R3W Less a tract of land described as: Commencing at a point 853.31 feet South of the NW/C of the SW/4 (said point being on the West line of said Quarter Section), thence East an interior angle of 90 deg. 00 min. a distance of 562.69 ft. to a point; thence South an interior angle of 90 deg. 00 min. a distance of 466.69 ft. to a point; thence West an interior angle of 90 deg. 00 min. a distance of 562.69 ft. to a point on the West line; thence North an interior angle of 90 deg. 00 min. a distance of 466.69 ft. to the POB



**Destiny Petroleum LLC**

Jayhawk 3203 1-32H  
Sumner County, Kansas

SHL: 1,825' FNL & 2,440' FWL  
Section 32, T32S, R3W  
BHL: 990' FSL & 330'FWL  
Section 29, T32S, R3W