

ADVANTAGE ELEVATIONS

OIL FIELD SURVEYORS

BOX 8604 - PRATT, KS 67124
(620) 672-6491

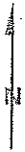
112163

INVOICE NO.

HUMMON CORPORATION 2-36 SMITH TWIN
OPERATOR NO FARM

BARBER 36 31s 11w 2180' FNL & 1720' FEL of Sec.
COUNTY S T R LOCATION

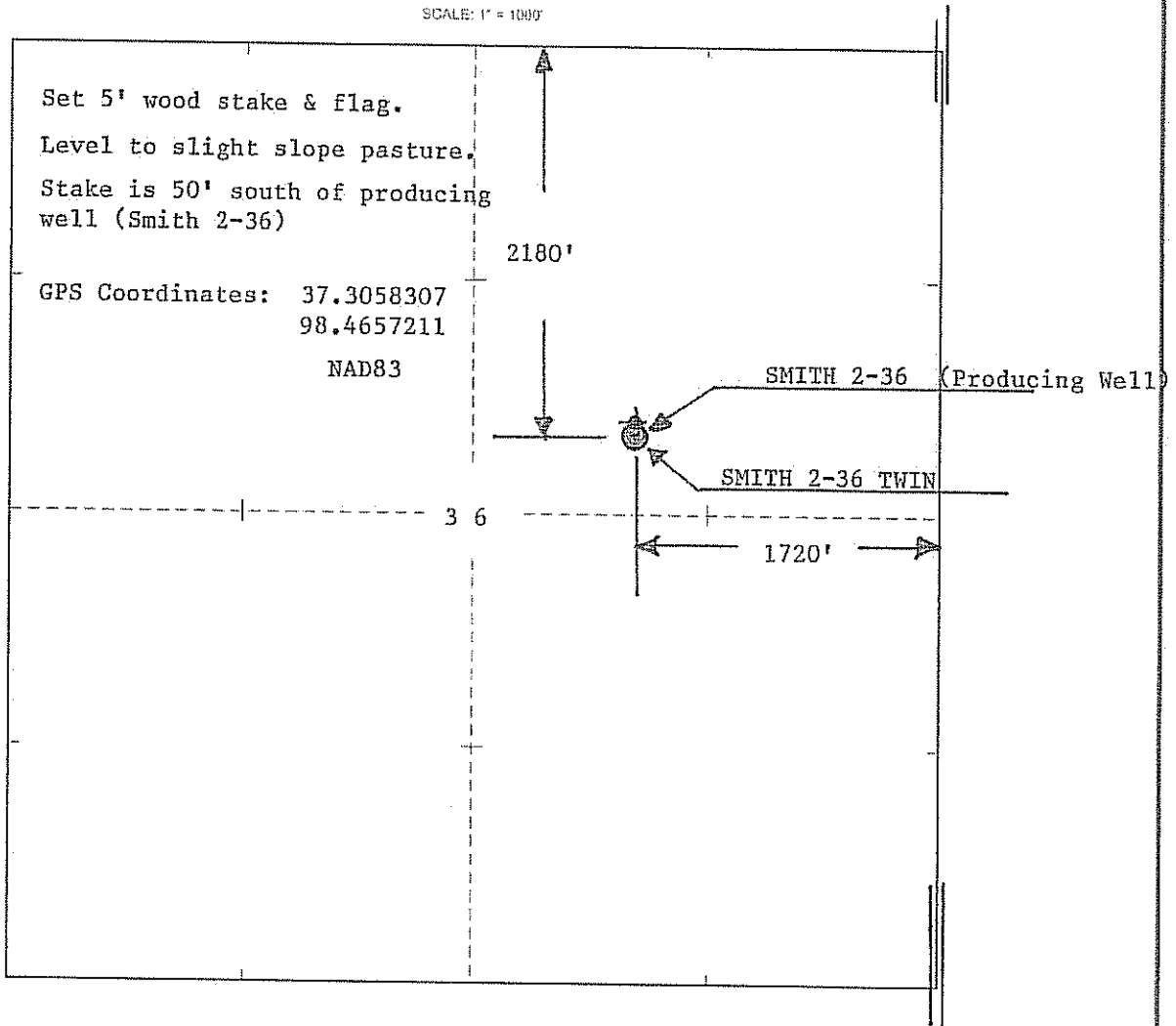
ELEVATION: 1657' GR



HUMMON CORPORATION
PO BOX 365
MEDICINE LODGE, KS 67104

AUTHORIZED BY: Bryant Theis

SCALE: 1" = 1000'



DATE STAKED: 11/2/16

D I C I N E

L O D G E

1682

1671

1689

1696

1650

1650

1650

Little

35

X1662

36

1650

TWIN

SMITH 2-36

17

BR1583

13

1593

1601

1637

Sharon North, KS' Scale: 1" = 0.189MI 305MT 1,000FL, 1 MI = 5,280', 1 cm = 120MT