

ADVANTAGE ELEVATIONS

OIL FIELD SURVEYORS

BOX 8604 - PRATT, KS 67124
(620) 672-6491

112161

INVOICE NO.

HUMMON CORPORATION

OPERATOR

4-36

NO

CHAPIN TWIN

FARM

BARBER

COUNTY

36

S

31s

T

11w

R

1930' FNL & 810' FWL of NW/4

LOCATION

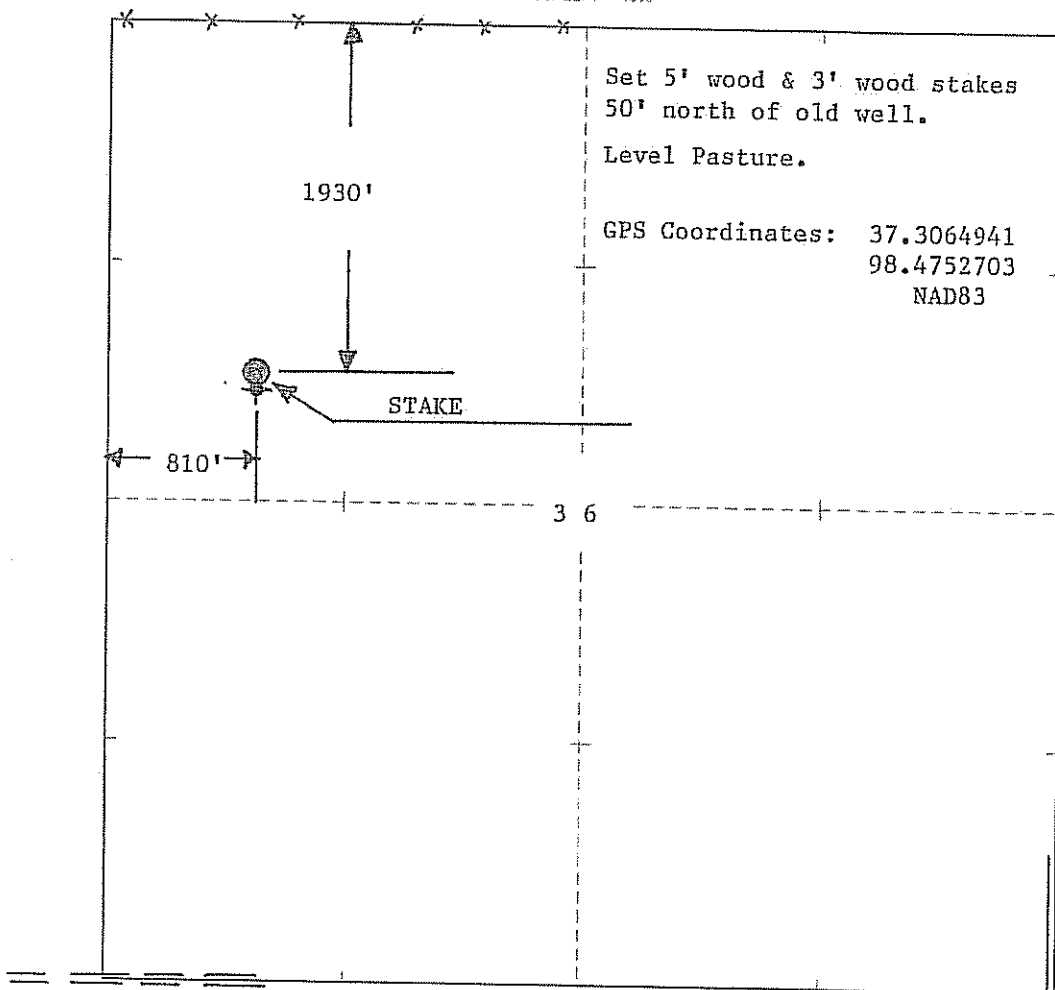
ELEVATION: 1660' GR

HUMMON CORPORATION
PO BOX 365
MEDICINE LODGE, KS 67104



AUTHORIZED BY: Bryant Theis

SCALE: 1" = 1000'



DATE STAKED: 11/2/16

BRIGIANCE LODGE

1682

1671

1689

1686

35

Little

X 1662

CHAPIN 4-36 TWIN

36

BR 1583

1593

1601

1637

Sharon North, KS Scale: 1" = 0.189MI 305MI 1.000FI 1 MI = 5.280' 1 cm = 1.20MI

