



**TRILOBITE  
TESTING, INC**

# DRILL STEM TEST REPORT

LaVeta Oil & Gas

**31-22S-11W Stafford**

305 N Buffalo  
Stafford, KS 67578

**Allen 15**

Job Ticket: 57970

**DST#: 1**

ATTN: Bruce Reed

Test Start: 2016.11.16 @ 19:28:22

## GENERAL INFORMATION:

Formation: **Arbuckle**

Deviated: No Whipstock: ft (KB)

Time Tool Opened: 21:34:37

Time Test Ended: 02:17:27

Test Type: Conventional Bottom Hole (Initial)

Tester: Leal Cason

Unit No: 74

**Interval: 3492.00 ft (KB) To 3548.00 ft (KB) (TVD)**

Reference Elevations: 1824.00 ft (KB)

Total Depth: 3548.00 ft (KB) (TVD)

1814.00 ft (CF)

Hole Diameter: 7.88 inches Hole Condition: Good

KB to GR/CF: 10.00 ft

**Serial #: 8159**

**Inside**

Press@RunDepth: 186.16 psig @ 3493.00 ft (KB)

Capacity: 8000.00 psig

Start Date: 2016.11.16

End Date:

2016.11.17

Last Calib.: 2016.11.17

Start Time: 19:28:23

End Time:

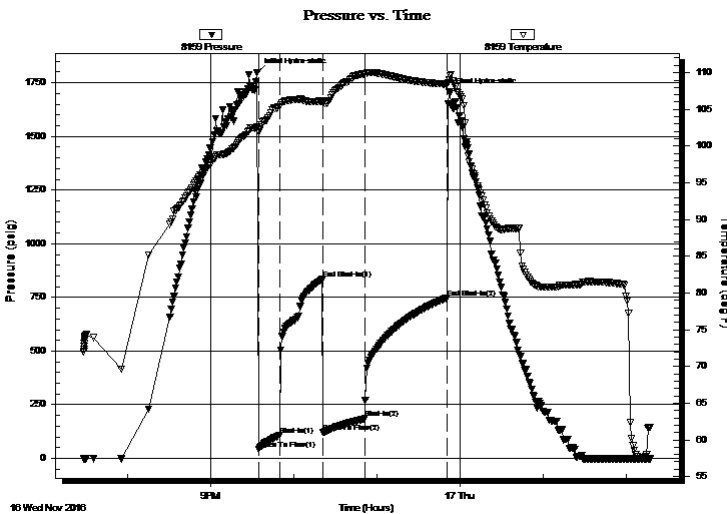
02:17:27

Time On Btm: 2016.11.16 @ 21:33:37

Time Off Btm: 2016.11.16 @ 23:52:07

**TEST COMMENT:** IF: Fair Blow , BOB in 5 minutes  
IS: 1 inch Blow Back  
FF: Fair Blow , BOB in 5 minutes  
FS: No Blow Back

## PRESSURE SUMMARY



Time (Min.)	Pressure (psig)	Temp (deg F)	Annotation
0	1798.41	102.65	Initial Hydro-static
1	43.81	101.95	Open To Flow (1)
16	107.34	105.37	Shut-In(1)
47	836.85	106.13	End Shut-In(1)
48	120.93	105.92	Open To Flow (2)
78	186.16	109.85	Shut-In(2)
138	748.84	108.42	End Shut-In(2)
139	1706.43	109.11	Final Hydro-static

## Recovery

Length (ft)	Description	Volume (bbl)
0.00	100 GIP	0.00
124.00	GMWCO 20%G 10%M 30%W 40%O	1.74
372.00	GMCO 20%G 10%M 70%O	5.22
20.00	GCO 20%G 80%O	0.28

## Gas Rates

	Choke (inches)	Pressure (psig)	Gas Rate (Mcf/d)





**TRILOBITE  
TESTING, INC**

# DRILL STEM TEST REPORT

**FLUID SUMMARY**

LaVeta Oil & Gas

**31-22S-11W Stafford**

305 N Buffalo  
Stafford, KS 67578

**Allen 15**

Job Ticket: 57970

**DST#: 1**

ATTN: Bruce Reed

Test Start: 2016.11.16 @ 19:28:22

## Mud and Cushion Information

Mud Type: Gel Chem

Cushion Type:

Oil API:

41.2 deg API

Mud Weight: 9.00 lb/gal

Cushion Length:

ft

Water Salinity:

25000 ppm

Viscosity: 52.00 sec/qt

Cushion Volume:

bbbl

Water Loss: 9.19 in<sup>3</sup>

Gas Cushion Type:

Resistivity: ohm.m

Gas Cushion Pressure:

psig

Salinity: 4700.00 ppm

Filter Cake: 0.02 inches

## Recovery Information

Recovery Table

Length ft	Description	Volume bbbl
0.00	100 GIP	0.000
124.00	GMWCO 20%G 10%M 30%W 40%O	1.739
372.00	GMCO 20%G 10%M 70%O	5.218
20.00	GCO 20%G 80%O	0.281

Total Length: 516.00 ft      Total Volume: 7.238 bbl

Num Fluid Samples: 0

Num Gas Bombs: 0

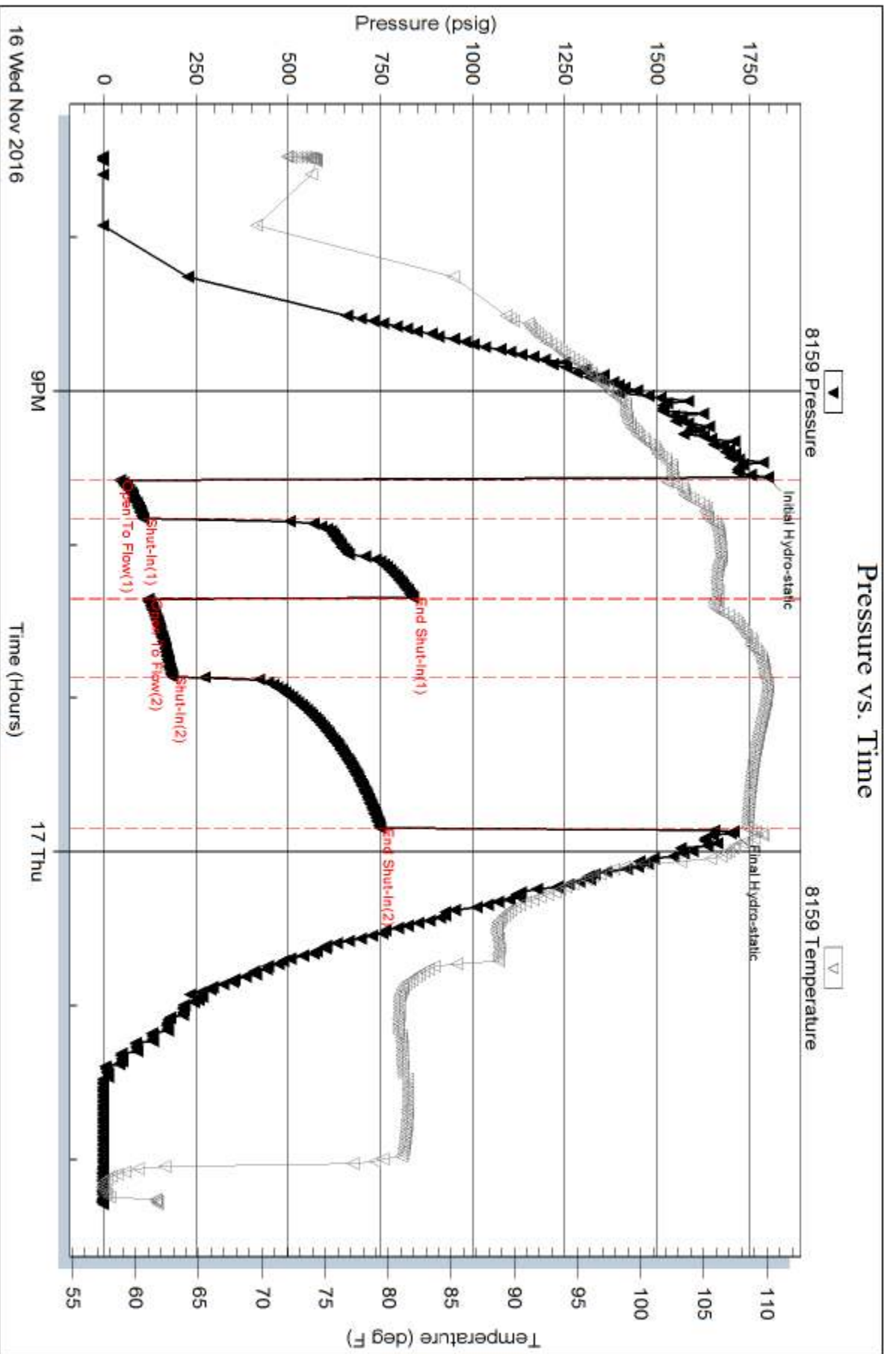
Serial #:

Laboratory Name:

Laboratory Location:

Recovery Comments: Gravity was 42 @ 41.2

RW was .32 @ 60 degrees



Serial #: 6806

Outside Laveta Oil & Gas

Allen 15

DST Test Number: 1

