

TEMPORARY ABANDONMENT WELL APPLICATION

OPERATOR: License# _____

Name: _____

Address 1: _____

Address 2: _____

City: _____ State: _____ Zip: _____ + _____

Contact Person: _____

Phone: (_____) _____

Contact Person Email: _____

Field Contact Person: _____

Field Contact Person Phone: (_____) _____

API No. 15- _____

Spot Description: _____

____ - ____ - ____ - ____ Sec. _____ Twp. _____ S. R. _____ ☐ E ☐ W_____ feet from ☐ N / ☐ S Line of Section_____ feet from ☐ E / ☐ W Line of Section

GPS Location: Lat: _____, Long: _____

Datum: ☐ NAD27 ☐ NAD83 ☐ WGS84County: _____ Elevation: _____ ☐ GL ☐ KB

Lease Name: _____ Well #: _____

Well Type: (check one) ☐ Oil ☐ Gas ☐ OG ☐ WSW ☐ Other: _____☐ SWD Permit #: _____ ☐ ENHR Permit #: _____☐ Gas Storage Permit #: _____

Spud Date: _____ Date Shut-In: _____

	Conductor	Surface	Production	Intermediate	Liner	Tubing
Size						
Setting Depth						
Amount of Cement						
Top of Cement						
Bottom of Cement						

Casing Fluid Level from Surface: _____ How Determined? _____ Date: _____

Casing Squeeze(s): _____ to _____ w / _____ sacks of cement, _____ to _____ w / _____ sacks of cement. Date: _____

Do you have a valid Oil & Gas Lease? ☐ Yes ☐ NoDepth and Type: ☐ Junk in Hole at _____ ☐ Tools in Hole at _____ Casing Leaks: ☐ Yes ☐ No Depth of casing leak(s): _____Type Completion: ☐ ALT. I ☐ ALT. II Depth of: ☐ DV Tool: _____ w / _____ sacks of cement ☐ Port Collar: _____ w / _____ sack of cement

Packer Type: _____ Size: _____ Inch Set at: _____ Feet

Total Depth: _____ Plug Back Depth: _____ Plug Back Method: _____

Geological Data:**Formation Name**

Formation Top Formation Base

Completion Information

1. _____ At: _____ to _____ Feet Perforation Interval _____ to _____ Feet or Open Hole Interval _____ to _____ Feet

2. _____ At: _____ to _____ Feet Perforation Interval _____ to _____ Feet or Open Hole Interval _____ to _____ Feet

UNDER PENALTY OF PERJURY I HEREBY ATTEST THAT THE INFORMATION CONTAINED HEREIN IS TRUE AND CORRECT TO THE BEST OF MY KNOWLEDGE

Submitted Electronically

**Do NOT Write in This
Space - KCC USE ONLY**

Date Tested: _____ Results: _____ Date Plugged: _____ Date Repaired: _____ Date Put Back in Service: _____

Review Completed by: _____ Comments: _____

TA Approved: ☐ Yes ☐ Denied Date: _____**Mail to the Appropriate KCC Conservation Office:**

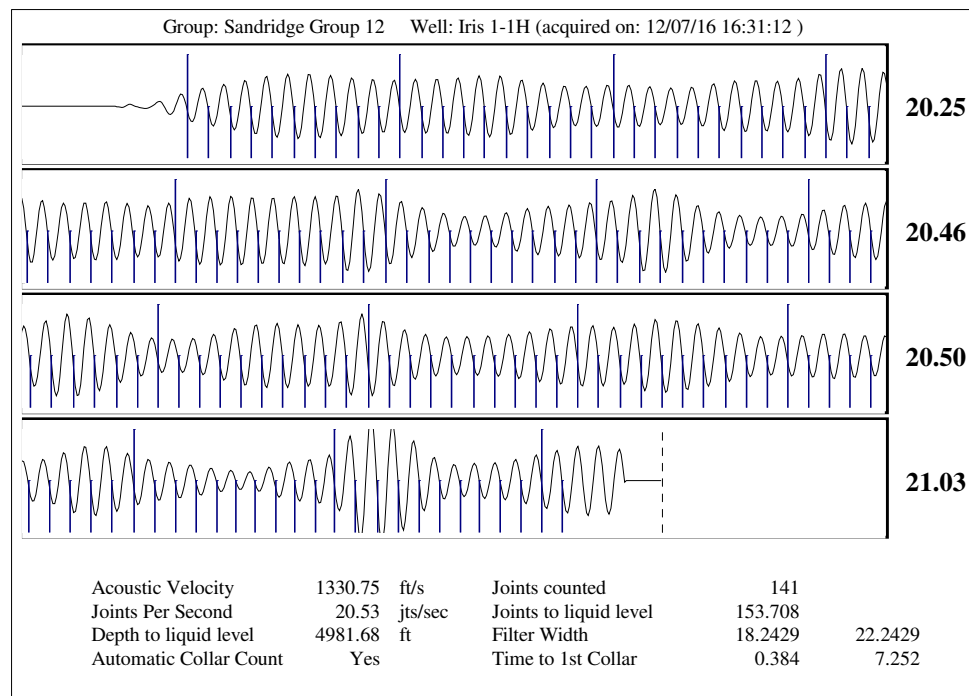
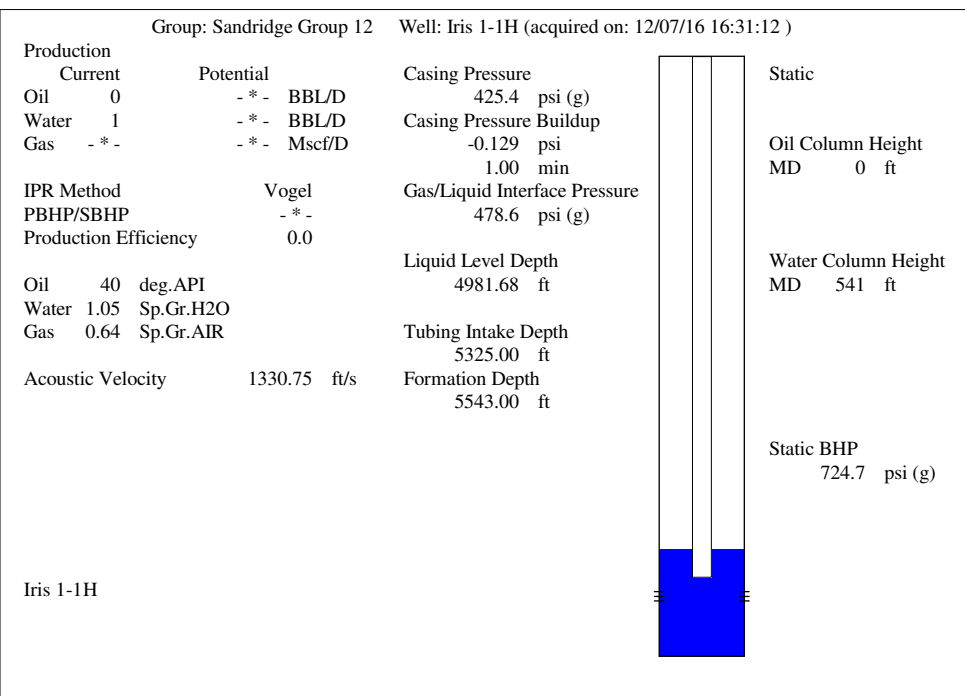
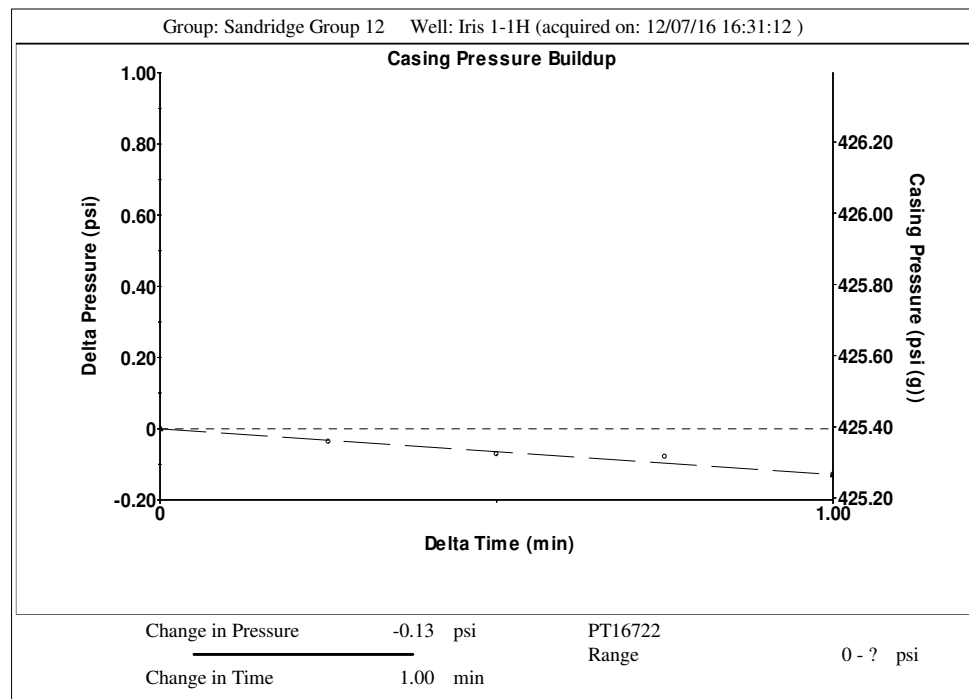
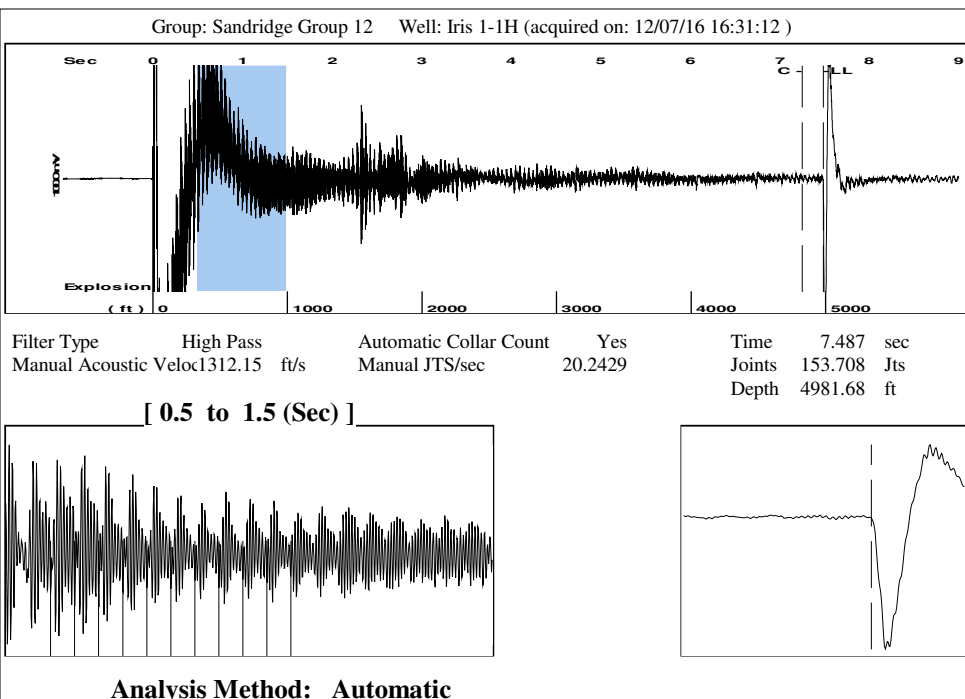
	KCC District Office #1 - 210 E. Frontview, Suite A, Dodge City, KS 67801	Phone 620.225.8888
	KCC District Office #2 - 3450 N. Rock Road, Building 600, Suite 601, Wichita, KS 67226	Phone 316.337.7400
	KCC District Office #3 - 1500 SW Seventh Steet, Chanute, KS 66720	Phone 620.432.2300
	KCC District Office #4 - 2301 E. 13th Street, Hays, KS 67601-2651	Phone 785.625.0550

General	
Well ID	120283
Well	Iris 1-1H
Company	Sandridge
Operator	- * -
Lease Name	Iris 1-1H
Elevation	2117.00 ft
Production Method	Other
Dataset Description	
Comment	

Surface Unit	
Manufacturer	- * -
Unit Class	Conventional
Unit API Number	- * -
Measured Stroke Length	- * - in
Rotation	CW
Counter Balance Effect (Weights Level)	- * - Klb
Weight Of Counter Weights	2000 lb
Prime Mover	
Motor Type	Electric
Rated HP	- * - HP
Run Time	24 hr/day
MFG/Comment	- * -
Electric Motor Parameters	
Rated Full Load AMPS	- * -
Rated Full Load RPM	- * -
Synchronous RPM	1200
Voltage	- * -
Hertz	60
Phase	3
Power Consumption	5
Power Demand	8 \$/KW

Tubulars			Pump			
Tubing OD	2.875	in	Plunger Diameter	- * -	in	
Casing OD	7.000	in	Pump Intake Depth	5325.00	ft	
Average Joint Length	32.410	ft	**Total Rod Length < Pump Depth			
Anchor Depth	- * -	ft				
Kelly Bushing	20.00	ft				
Rod String			Polished Rod			
			Polished Rod Diameter	- * -	in	
	Top Taper	Taper 2	Taper 3	Taper 4	Taper 5	Taper 6
Rod Type	- * -	- * -	- * -	- * -	- * -	- * -
Rod Length	- * -	- * -	- * -	- * -	- * -	- * - ft
Rod Diameter	- * -	- * -	- * -	- * -	- * -	- * - in
Rod Weight	0.0	0.0	0.0	0.0	0.0	0.0 lb
Total Rod Length	0					
Total Rod Weight	0.00					
Damp Up	0.05					
Damp Down	0.05					

Conditions					
Pressure		Production			
Static BHP	724.7	psi (g)	Oil Production	0	BBL/D
Static BHP Method	Acoustic		Water Production	1	BBL/D
Static BHP Date	12/07/2016		Gas Production	- * -	Mscf/D
			Production Date	12/06/2016	
Producing BHP	- * -	psi (g)	Temperatures		
Producing BHP Method	- * -		Surface Temperature	70	deg F
Producing BHP Date	- * -		Bottomhole Temperature	150	deg F
Formation Depth	5543.00	ft			
Surface Producing Pressures					
Tubing Pressure	90.0	psi (g)	Fluid Properties		
Casing Pressure	425.4	psi (g)	Oil API	40	deg.API
			Water Specific Gravity	1.05	Sp.Gr.H2O
Casing Pressure Buildup					
Change in Pressure	-0.129	psi			
Over Change in Time	1.00	min			



Conservation Division
District Office No. 1
210 E. Frontview, Suite A
Dodge City, KS 67801



Phone: 620-225-8888
Fax: 620-225-8885
<http://kcc.ks.gov/>

Jay Scott Emler, Chairman
Shari Feist Albrecht, Commissioner
Pat Apple, Commissioner

Sam Brownback, Governor

December 13, 2016

Laci Bevans
SandRidge Exploration and Production LLC
123 ROBERT S. KERR AVE
OKLAHOMA CITY, OK 73102-6406

Re: Temporary Abandonment
API 15-033-21611-01-00
IRIS 1-1H
NW/4 Sec.01-31S-20W
Comanche County, Kansas

Dear Laci Bevans:

"Your temporary abandonment (TA) application for the well listed above has been approved. In accordance with K.A.R. 82-3-111 the TA status of this well will expire 12/13/2017.

- * If you return this well to service or plug it, please notify the District Office.
- * If you sell this well you are required to file a Transfer of Operator form, T-1.
- * If the well will remain temporarily abandoned, you must submit a new TA application, CP-111, before 12/13/2017.

You may contact me at the number above if you have questions.

Very truly yours,

Michael Maier"