



TEMPORARY ABANDONMENT WELL APPLICATION

All blanks must be complete

OPERATOR: License# _____
 Name: _____
 Address 1: _____
 Address 2: _____
 City: _____ State: _____ Zip: _____ + _____
 Contact Person: _____
 Phone: (_____) _____
 Contact Person Email: _____
 Field Contact Person: _____
 Field Contact Person Phone: (_____) _____

API No. 15- _____
 Spot Description: _____
 _____ - _____ - _____ - _____ Sec. _____ Twp. _____ S. R. _____ E W
 _____ feet from N / S Line of Section
 _____ feet from E / W Line of Section
 GPS Location: Lat: _____, Long: _____
(e.g. xx.xxxxx) (e.g. -xxx.xxxxx)
 Datum: NAD27 NAD83 WGS84
 County: _____ Elevation: _____ GL KB
 Lease Name: _____ Well #: _____
 Well Type: (check one) Oil Gas OG WSW Other: _____
 SWD Permit #: _____ ENHR Permit #: _____
 Gas Storage Permit #: _____
 Spud Date: _____ Date Shut-In: _____

	Conductor	Surface	Production	Intermediate	Liner	Tubing
Size						
Setting Depth						
Amount of Cement						
Top of Cement						
Bottom of Cement						

Casing Fluid Level from Surface: _____ How Determined? _____ Date: _____

Casing Squeeze(s): _____ to _____ w / _____ sacks of cement, _____ to _____ w / _____ sacks of cement. Date: _____
(top) (bottom) (top) (bottom)

Do you have a valid Oil & Gas Lease? Yes No

Depth and Type: Junk in Hole at _____ Tools in Hole at _____ Casing Leaks: Yes No Depth of casing leak(s): _____
(depth) (depth)

Type Completion: ALT. I ALT. II Depth of: DV Tool: _____ w / _____ sacks of cement Port Collar: _____ w / _____ sack of cement
(depth) (depth)

Packer Type: _____ Size: _____ Inch Set at: _____ Feet

Total Depth: _____ Plug Back Depth: _____ Plug Back Method: _____

Geological Data:

Formation Name	Formation Top	Formation Base	Completion Information
1. _____	At: _____	to _____ Feet	Perforation Interval _____ to _____ Feet or Open Hole Interval _____ to _____ Feet
2. _____	At: _____	to _____ Feet	Perforation Interval _____ to _____ Feet or Open Hole Interval _____ to _____ Feet

UNDER PENALTY OF PERJURY I HEREBY ATTEST THAT THE INFORMATION CONTAINED HEREIN IS TRUE AND CORRECT TO THE BEST OF MY KNOWLEDGE

Submitted Electronically

Do NOT Write in This Space - KCC USE ONLY

Date Tested: _____ Results: _____ Date Plugged: _____ Date Repaired: _____ Date Put Back in Service: _____

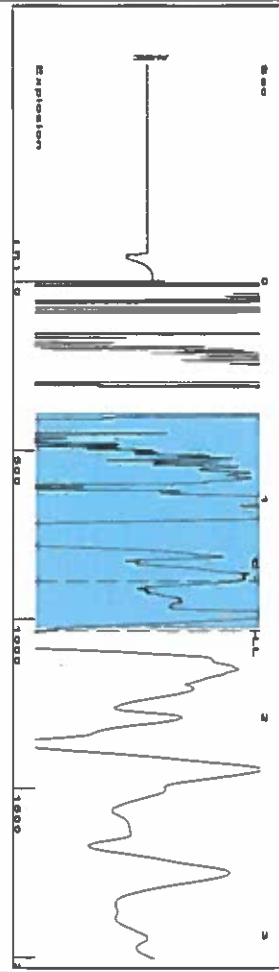
Review Completed by: _____ Comments: _____

TA Approved: Yes Denied Date: _____

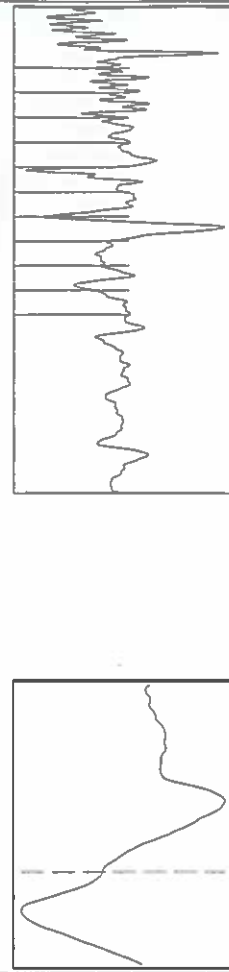
Mail to the Appropriate KCC Conservation Office:

	KCC District Office #1 - 210 E. Frontview, Suite A, Dodge City, KS 67801	Phone 620.225.8888
	KCC District Office #2 - 3450 N. Rock Road, Building 600, Suite 601, Wichita, KS 67226	Phone 316.337.7400
	KCC District Office #3 - 1500 SW Seventh Steet, Chanute, KS 66720	Phone 620.432.2300
	KCC District Office #4 - 2301 E. 13th Street, Hays, KS 67601-2651	Phone 785.625.0550

Group: DEVON WELLS Well: DICK 2 (acquired on: 11/17/16 08:05:52)



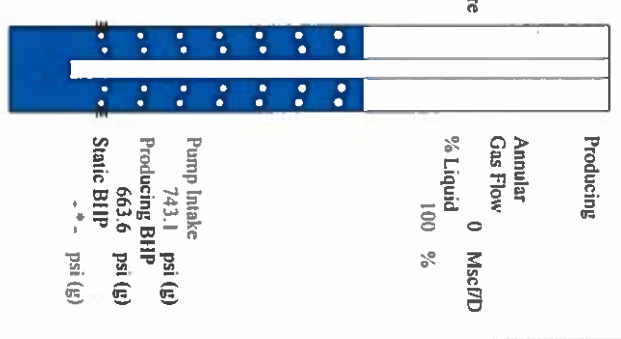
Filter Type High Pass Automatic Collar Count Yes
 Manual Acoustic Velo 243.14 ft/s Manual JTS/sec 19.6078
 Time 1.604 sec
 Joints 32.6395 Jts
 Depth 1034.67 ft



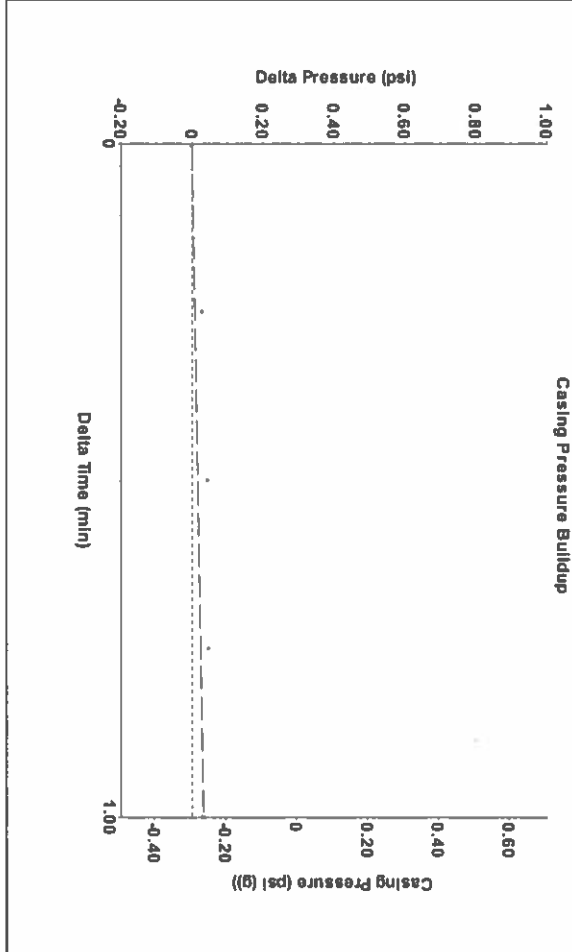
Analysis Method: Automatic

Group: DEVON WELLS Well: DICK 2 (acquired on: 11/17/16 08:05:52)

Production	Potential	Casing Pressure	Producing
Oil 0	-*- BBL/D	-0.3 psi (g)	Annular Gas Flow 0 Mscf/D
Water 0	-*- BBL/D	Casing Pressure Buildup 0.032 psi	% Liquid 100 %
Gas 0.0	-*- Mscf/D	1.00 min	
IPR Method PBHP/SBHP	Vogel -*-	Gas/Liquid Interface Pressure 0.1 psi (g)	
Production Efficiency 0.0		Liquid Level Depth 1034.67 ft	
Oil 40 deg API		Pump Intake Depth 2669.00 ft	
Water 1.05 Sp.Gr.H2O		Formation Depth 2494.00 ft	
Gas 0.70 Sp.Gr.AIR			
Acoustic Velocity 1290.12 ft/s			

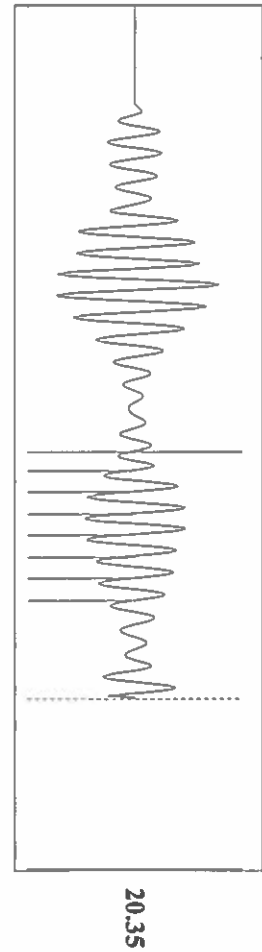


Group: DEVON WELLS Well: DICK 2 (acquired on: 11/17/16 08:05:52)



Change in Pressure 0.03 psi
 Change in Time 1.00 min
 PT4009 Range 0 - 7 psi

Group: DEVON WELLS Well: DICK 2 (acquired on: 11/17/16 08:05:52)



Acoustic Velocity 1290.12 ft/s	Joints counted 7
Joints Per Second 20.3488 Jts/sec	Joints to liquid level 32.6395
Depth to liquid level 1034.67 ft	Filter Width 17.6078
Automatic Collar Count Yes	Time to 1st Collar 1.032

Conservation Division
District Office No. 1
210 E. Frontview, Suite A
Dodge City, KS 67801



Phone: 620-225-8888
Fax: 620-225-8885
<http://kcc.ks.gov/>

Jay Scott Emler, Chairman
Shari Feist Albrecht, Commissioner
Pat Apple, Commissioner

Sam Brownback, Governor

December 20, 2016

Shawn Hildreth
Linn Operating, Inc.
600 TRAVIS STE 5100
HOUSTON, TX 77002-3018

Re: Temporary Abandonment
API 15-055-21443-00-00
DICK 2
SE/4 Sec.32-22S-34W
Finney County, Kansas

Dear Shawn Hildreth:

"Your temporary abandonment (TA) application for the well listed above has been approved. In accordance with K.A.R. 82-3-111 the TA status of this well will expire 12/20/2017.

- * If you return this well to service or plug it, please notify the District Office.
- * If you sell this well you are required to file a Transfer of Operator form, T-1.
- * If the well will remain temporarily abandoned, you must submit a new TA application, CP-111, before 12/20/2017.

You may contact me at the number above if you have questions.

Very truly yours,

Michael Maier"