



# TEMPORARY ABANDONMENT WELL APPLICATION

OPERATOR: License# \_\_\_\_\_  
 Name: \_\_\_\_\_  
 Address 1: \_\_\_\_\_  
 Address 2: \_\_\_\_\_  
 City: \_\_\_\_\_ State: \_\_\_\_\_ Zip: \_\_\_\_\_ + \_\_\_\_\_  
 Contact Person: \_\_\_\_\_  
 Phone: ( \_\_\_\_\_ ) \_\_\_\_\_  
 Contact Person Email: \_\_\_\_\_  
 Field Contact Person: \_\_\_\_\_  
 Field Contact Person Phone: ( \_\_\_\_\_ ) \_\_\_\_\_

API No. 15- \_\_\_\_\_  
 Spot Description: \_\_\_\_\_  
 \_\_\_\_\_ - \_\_\_\_\_ - \_\_\_\_\_ - \_\_\_\_\_ Sec. \_\_\_\_\_ Twp. \_\_\_\_\_ S. R. \_\_\_\_\_  E  W  
 \_\_\_\_\_ feet from  N /  S Line of Section  
 \_\_\_\_\_ feet from  E /  W Line of Section  
 GPS Location: Lat: \_\_\_\_\_, Long: \_\_\_\_\_  
(e.g. xx.xxxxx) (e.g. -xxx.xxxxx)  
 Datum:  NAD27  NAD83  WGS84  
 County: \_\_\_\_\_ Elevation: \_\_\_\_\_  GL  KB  
 Lease Name: \_\_\_\_\_ Well #: \_\_\_\_\_  
 Well Type: (check one)  Oil  Gas  OG  WSW  Other: \_\_\_\_\_  
 SWD Permit #: \_\_\_\_\_  ENHR Permit #: \_\_\_\_\_  
 Gas Storage Permit #: \_\_\_\_\_  
 Spud Date: \_\_\_\_\_ Date Shut-In: \_\_\_\_\_

	Conductor	Surface	Production	Intermediate	Liner	Tubing
Size						
Setting Depth						
Amount of Cement						
Top of Cement						
Bottom of Cement						

Casing Fluid Level from Surface: \_\_\_\_\_ How Determined? \_\_\_\_\_ Date: \_\_\_\_\_  
 Casing Squeeze(s): \_\_\_\_\_ to \_\_\_\_\_ w / \_\_\_\_\_ sacks of cement, \_\_\_\_\_ to \_\_\_\_\_ w / \_\_\_\_\_ sacks of cement. Date: \_\_\_\_\_  
(top) (bottom) (top) (bottom)  
 Do you have a valid Oil & Gas Lease?  Yes  No  
 Depth and Type:  Junk in Hole at \_\_\_\_\_  Tools in Hole at \_\_\_\_\_ Casing Leaks:  Yes  No Depth of casing leak(s): \_\_\_\_\_  
(depth) (depth)  
 Type Completion:  ALT. I  ALT. II Depth of:  DV Tool: \_\_\_\_\_ w / \_\_\_\_\_ sacks of cement  Port Collar: \_\_\_\_\_ w / \_\_\_\_\_ sack of cement  
(depth) (depth)  
 Packer Type: \_\_\_\_\_ Size: \_\_\_\_\_ Inch Set at: \_\_\_\_\_ Feet  
 Total Depth: \_\_\_\_\_ Plug Back Depth: \_\_\_\_\_ Plug Back Method: \_\_\_\_\_

**Geological Data:**

Formation Name	Formation Top	Formation Base	Completion Information
1. _____	At: _____	to _____ Feet	Perforation Interval _____ to _____ Feet or Open Hole Interval _____ to _____ Feet
2. _____	At: _____	to _____ Feet	Perforation Interval _____ to _____ Feet or Open Hole Interval _____ to _____ Feet

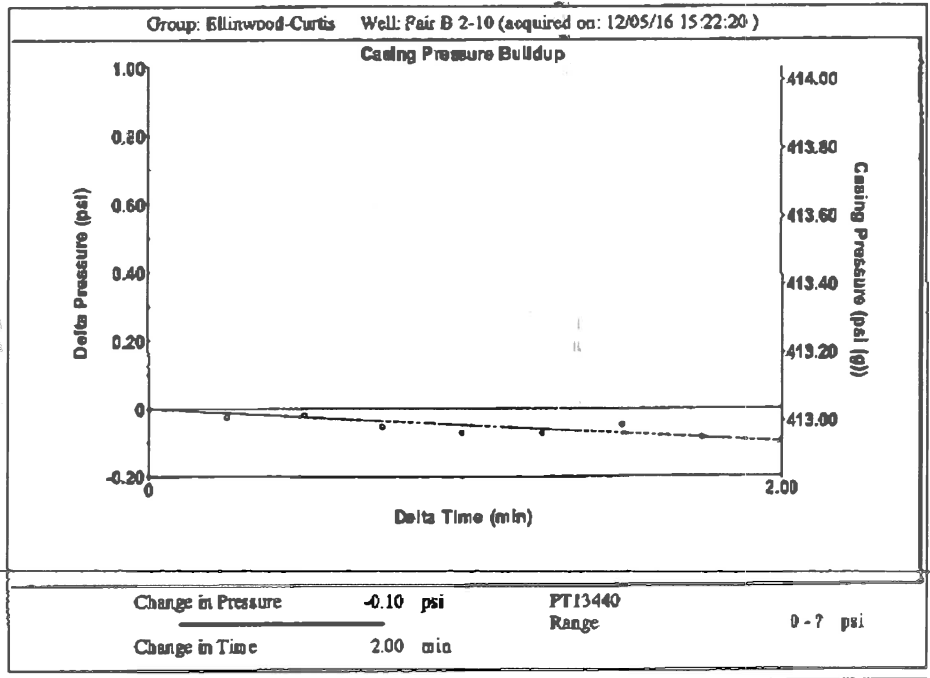
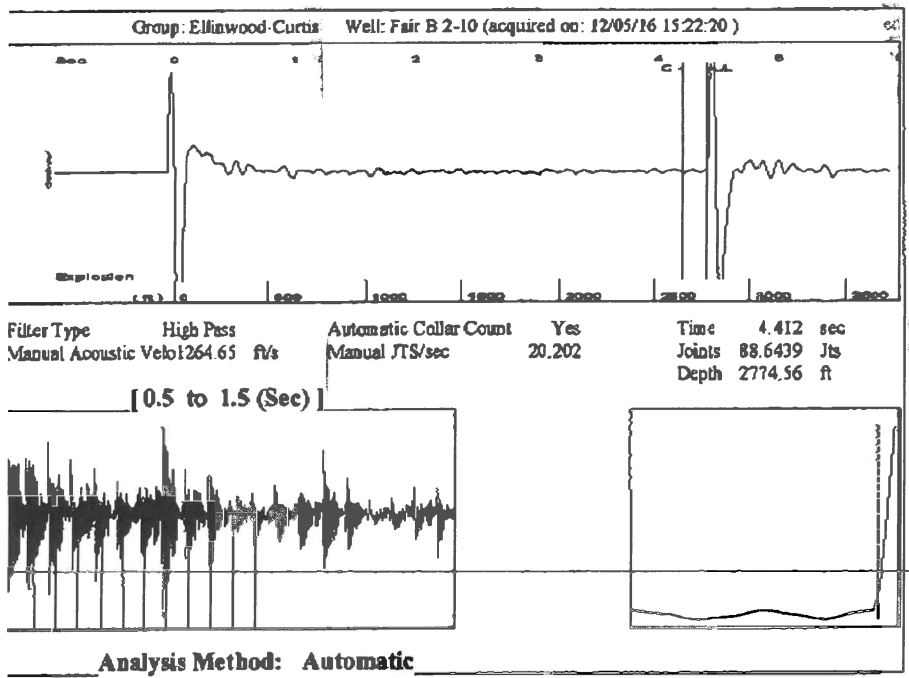
UNDER PENALTY OF PERJURY I HEREBY ATTEST THAT THE INFORMATION CONTAINED HEREIN IS TRUE AND CORRECT TO THE BEST OF MY KNOWLEDGE

Submitted Electronically

<b>Do NOT Write in This Space - KCC USE ONLY</b>	Date Tested: _____	Results: _____	Date Plugged: _____	Date Repaired: _____	Date Put Back in Service: _____
	Review Completed by: _____ Comments: _____				
TA Approved: <input type="checkbox"/> Yes <input type="checkbox"/> Denied Date: _____					

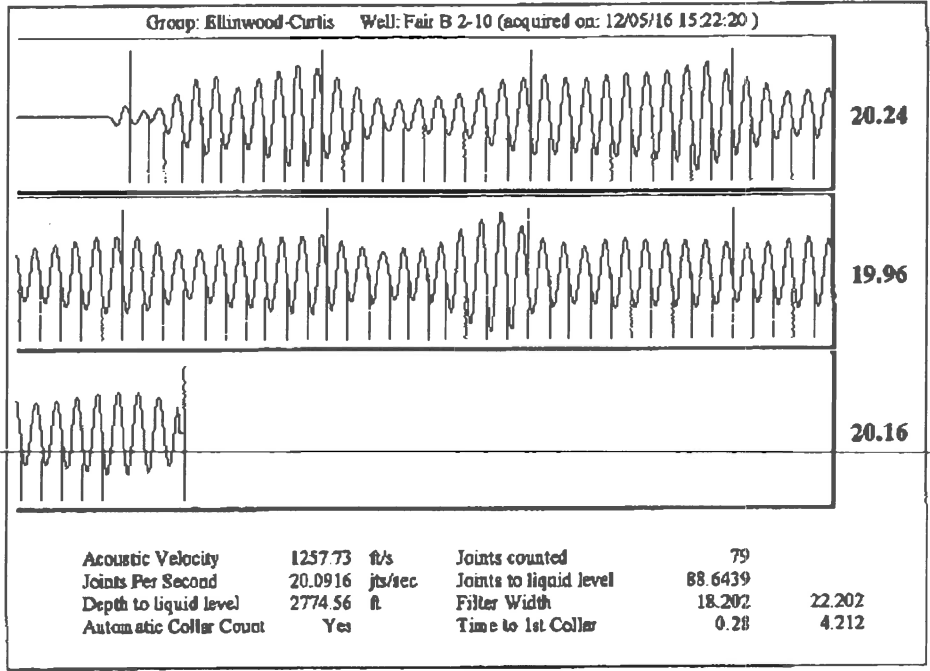
**Mail to the Appropriate KCC Conservation Office:**

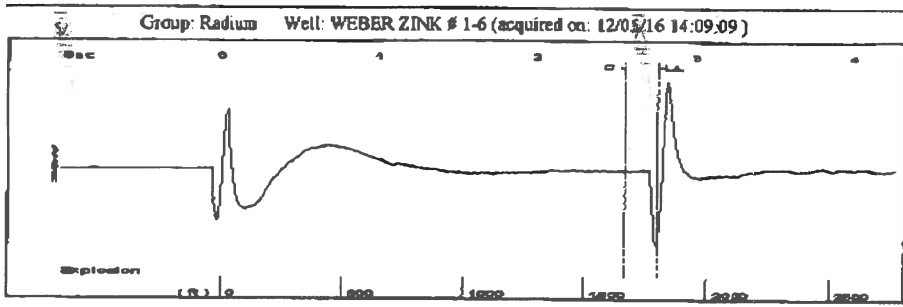
	KCC District Office #1 - 210 E. Frontview, Suite A, Dodge City, KS 67801	Phone 620.225.8888
	KCC District Office #2 - 3450 N. Rock Road, Building 600, Suite 601, Wichita, KS 67226	Phone 316.337.7400
	KCC District Office #3 - 1500 SW Seventh Steet, Chanute, KS 66720	Phone 620.432.2300
	KCC District Office #4 - 2301 E. 13th Street, Hays, KS 67601-2651	Phone 785.625.0550



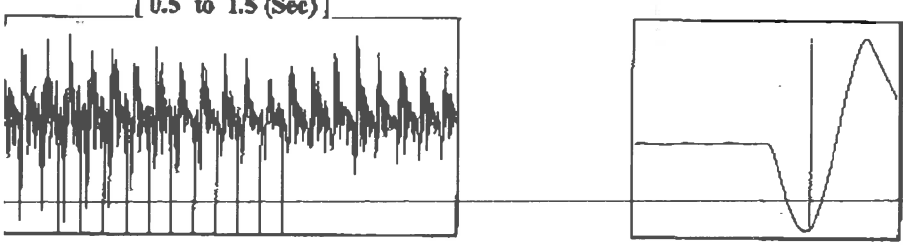
Group: Ellinwood-Curtis Well: Fair B 2-10 (acquired on: 12/05/16 15:22:20)

<b>Production</b>		<b>Casing Pressure</b>	413.0 psi (g)	<b>Producing</b>
Current	Potential	<b>Casing Pressure Buildup</b>	-0.097 psi	Annular Gas Flow
Oil -.-	-.- BBL/D	2.00 min		0 Msc/D
Water -.-	-.- BBL/D	<b>Gas/Liquid Interface Pressure</b>	443.8 psi (g)	% Liquid
Gas -.-	-.- Msc/D	Liquid Level Depth	2774.56 ft	100 %
IPR Method	Vogel	Pump Intake Depth	-.- ft	
PBHP/SBHP	-.-	Formation Depth	3024.00 ft	
Production Efficiency	0.0			
Oil 40 deg API				
Water 1.05 Sp.Gr.H2O				
Gas 0.70 Sp.Gr.AIR				
Acoustic Velocity	1257.73 ft/s			
Formation Submergence				
Total Gaseous Liquid Column HT (TVD)	249 ft			
Equivalent Gas Free Liquid HT (TVD)	249 ft			
Acoustic Test				



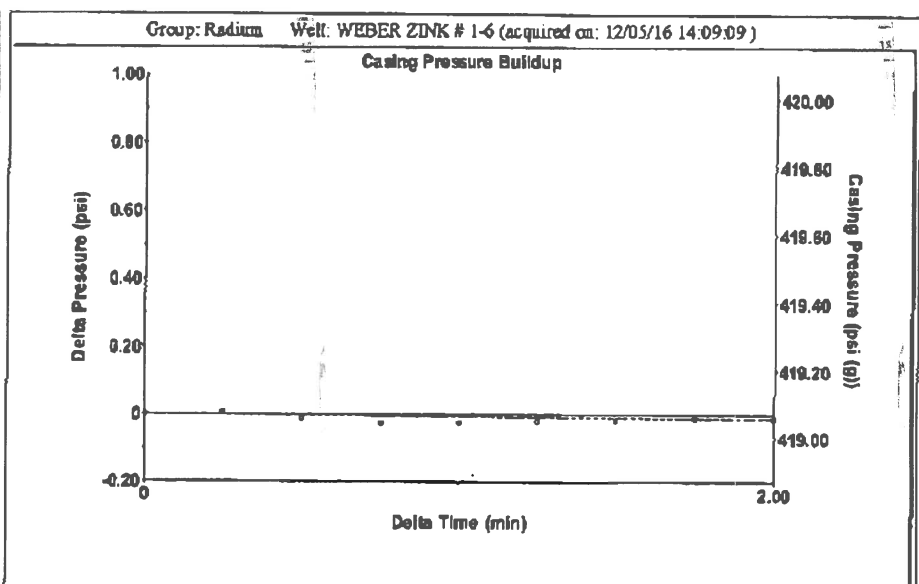


Filter Type High Pass Automatic Collar Count Yes Time 2.765 sec  
 Manual Acoustic Velo 1293.86 ft/s Manual JTS/sec 20.4082 Joints 56.6598 Jts  
 Depth 1796.12 ft

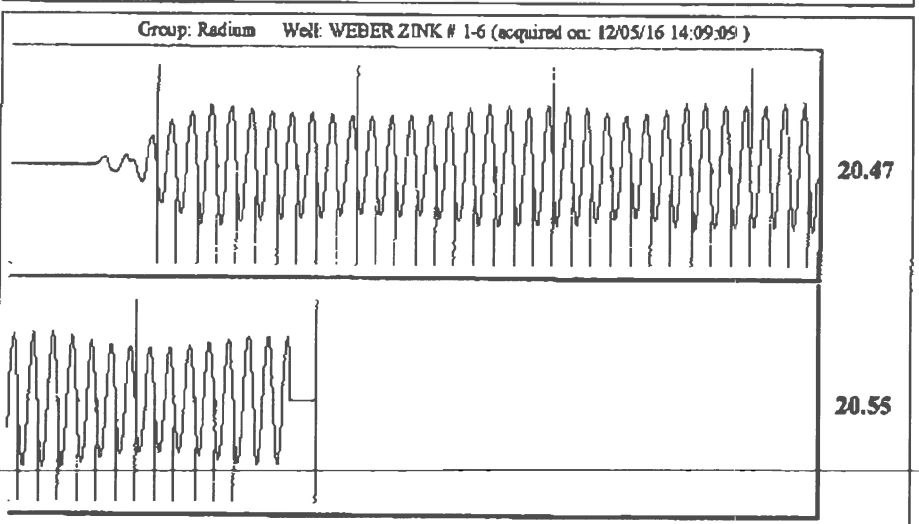


Analysis Method: Automatic

Production		Casing Pressure		Producing
Current	Potential			
Oil -.-	-.- BBL/D	419.1	psi (g)	Annular Gas Flow -.- Mscf/D
Water -.-	-.- BBL/D	Casing Pressure Buildup		
Gas -.-	-.- Mscf/D	-0.012	psi	
		2.00	min	
IPR Method	Vogel	Gas/Liquid Interface Pressure		% Liquid 100 %
PBHP/SBHP	-.-	438.0	psi (g)	
Production Efficiency	0.0	Liquid Level Depth		
Oil 40 deg API		1796.12	ft	
Water 1.05 Sp.Gr.H2O		Pump Intake Depth		
Gas 0.65 Sp.Gr.AIR		-.-	ft	
Acoustic Velocity 1299.18 ft/s		Formation Depth		
		3518.00	ft	
Formation Submergence		Pump Intake		
Total Gaseous Liquid Column HT (TVD)	1722	ft	psi (g)	
Equivalent Gas Free Liquid HT (TVD)	1722	ft	Producing BHP 1220.9	psi (g)
Acoustic Test			Static BHP	psi (g)



Change in Pressure -0.01 psi PT13440  
 Change in Time 2.00 min Range 0 - ? psi



Acoustic Velocity	1299.18	ft/s	Joints counted	45
Joints Per Second	20.4918	jts/sec	Joints to liquid level	56.6598
Depth to liquid level	1796.12	ft	Filter Width	18.4082
Automatic Collar Count	Yes		Time to 1st Collar	0.368
				2.564

December 27, 2016

Loveness Mpanje  
F. G. Holl Company L.L.C.  
9431 E CENTRAL STE 100  
WICHITA, KS 67206-2563

Re: Temporary Abandonment  
API 15-185-23120-00-01  
FAIR B OWWO 2-10  
NE/4 Sec.10-21S-11W  
Stafford County, Kansas

Dear Loveness Mpanje:

Your application for Temporary Abandonment (TA) for the above-listed well is denied for the following reasons(s):

**Shut-in Over 10 years**

Pursuant to K.A.R. 82-3-111, the well must be plugged or returned to service by January 24, 2017.

If you wish to instead file an application for an exception to the 10-year limitation of K.A.R. 82-3-111, demonstrating why it is necessary to TA the well for more than 10 years, then you must file the application for an exception by January 24, 2017.

**This deadline does NOT override any compliance deadline given to you in any Commission Order.**

You may contact me if you have any questions.

Sincerely,  
Michael Maier  
KCC DISTRICT 1