



TRILOBITE TESTING, INC

DRILL STEM TEST REPORT

Mustang Energy Corp
 PO Box 1121
 Hays, KS 67601
 ATTN: Jeff Lawler

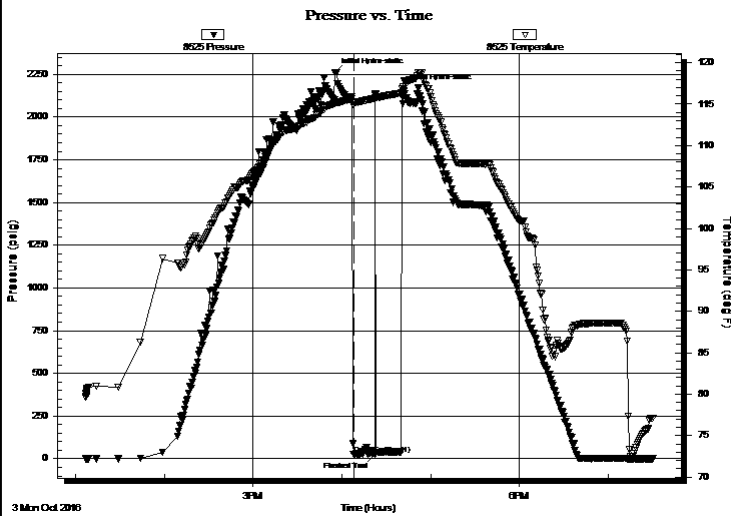
34-19S-22W Ness
Miller/Mossburgh U 1
 Job Ticket: 55419 **DST#: 1**
 Test Start: 2016.10.03 @ 13:06:41

GENERAL INFORMATION:

Formation: **Mississippi**
 Deviated: No Whipstock: ft (KB)
 Time Tool Opened: 16:07:41
 Time Test Ended: 19:30:11
Interval: 4345.00 ft (KB) To 4421.00 ft (KB) (TVD)
 Total Depth: 4421.00 ft (KB) (TVD)
 Hole Diameter: 7.88 inches Hole Condition: Good
 Test Type: Conventional Bottom Hole (Initial)
 Tester: Leal Cason
 Unit No: 74
 Reference Elevations: 2287.00 ft (KB)
 2276.00 ft (CF)
 KB to GR/CF: 11.00 ft

Serial #: 8525 Inside
 Press@RunDepth: psig @ 4346.00 ft (KB) Capacity: 8000.00 psig
 Start Date: 2016.10.03 End Date: 2016.10.03 Last Calib.: 2016.10.03
 Start Time: 13:06:42 End Time: 19:30:11 Time On Btm: 2016.10.03 @ 15:55:26
 Time Off Btm: 2016.10.03 @ 16:41:41

TEST COMMENT: IF: No Blow , Flushed Tool, Still No Blow , Pulled Tool



PRESSURE SUMMARY

Time (Min.)	Pressure (psig)	Temp (deg F)	Annotation
0	2259.86	115.12	Initial Hydro-static
13	27.72	115.19	Open To Flow (1)
27	24.13	115.71	Flushed Tool
47	2164.83	117.82	Final Hydro-static

Recovery

Length (ft)	Description	Volume (bbl)
5.00	Mud	0.02

Gas Rates

	Choke (inches)	Pressure (psig)	Gas Rate (Mcf/d)

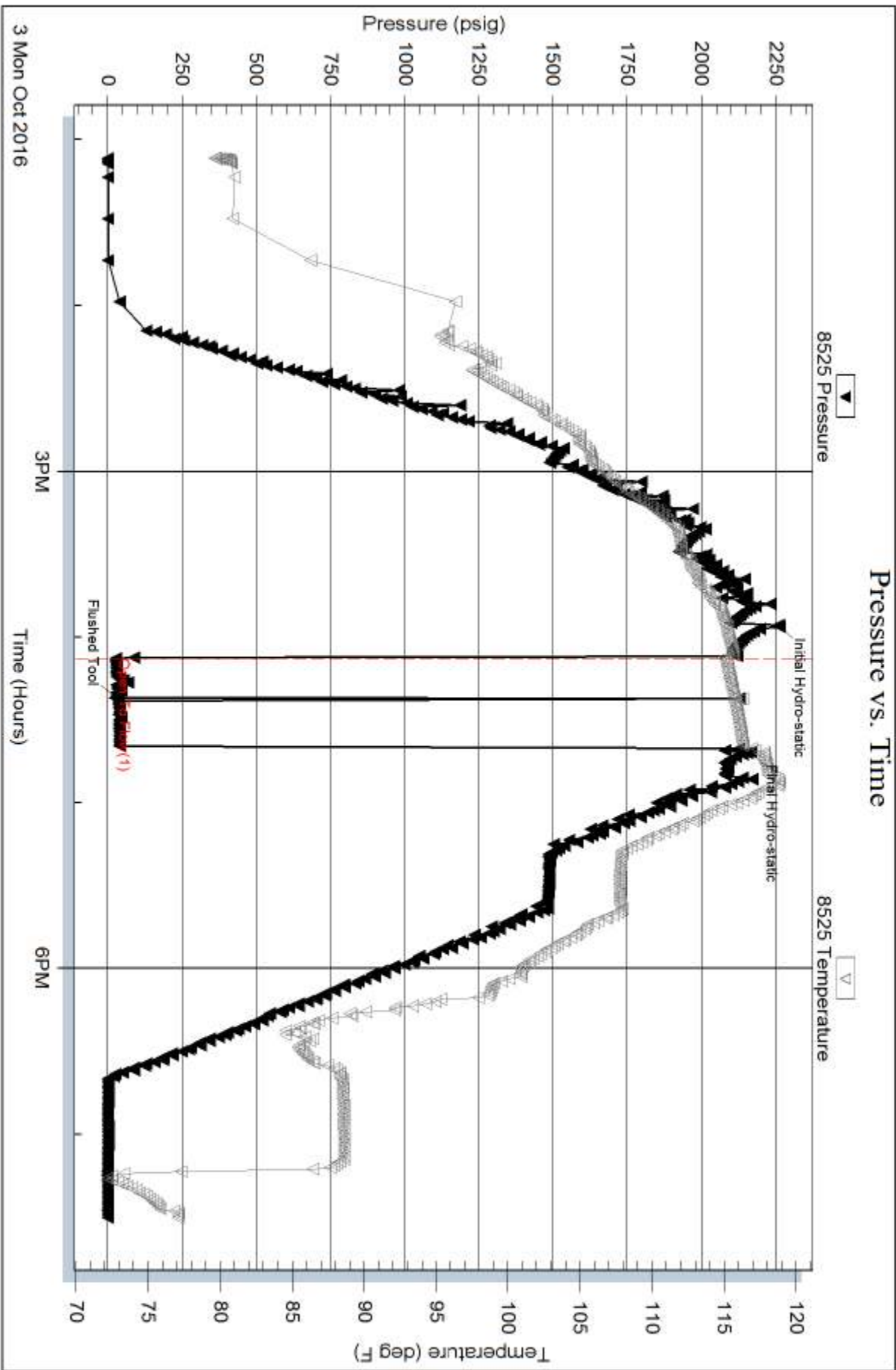
Serial #: 8525

Inside

Mustang Energy Corp

Miller/Mossburgh U 1

DST Test Number: 1



Serial #: 6806

Outside Mustang Energy Corp

Miller/Mossburgh U 1

DST Test Number: 1

