



Service Order #: 70,084C

Date: 09-Nov-16

Well Name	Location	County	St	API#		
YODER 1-7		WALLACE	KS			
Formation	Cement Via	Type Of Service	Well Type	Age	AFE#	PO#
	CASING	SURFACE		NEW		

Customer: STELBAR OIL CORPORATION
 155 NORTH MARKET, STE. 500
 WICHITA KS 67202

Remarks: LEAD: 180 SKS, 80 BBLS
 TAIL: 230 SKS, 49 BBLS
 30 BBLS CMT TO PIT
 77.8 BBLS H2O DISPLACEMENT
 20' CMT SHOE

Customer Rep: SAMMY PH:

WELLBORE DATA

Type	Size	Weight	Depth	Volume
Surface Casing:	13.375	48.0	516.0	
Production Casing:				
Intermediate:				
Drill Pipe:				
Tubing:				

OTHER DATA

BHT	Max PSI	Total Depth
	252	516.0

Packer or Retainer Type / Depth:

--	--

Type	Size	Depth (Top)	Depth (Bot)	Volume
Liner:				
Open Hole:	17.500	0.0	530.0	

Perf Depths:	#	Total
	0	0
	0	
	0	

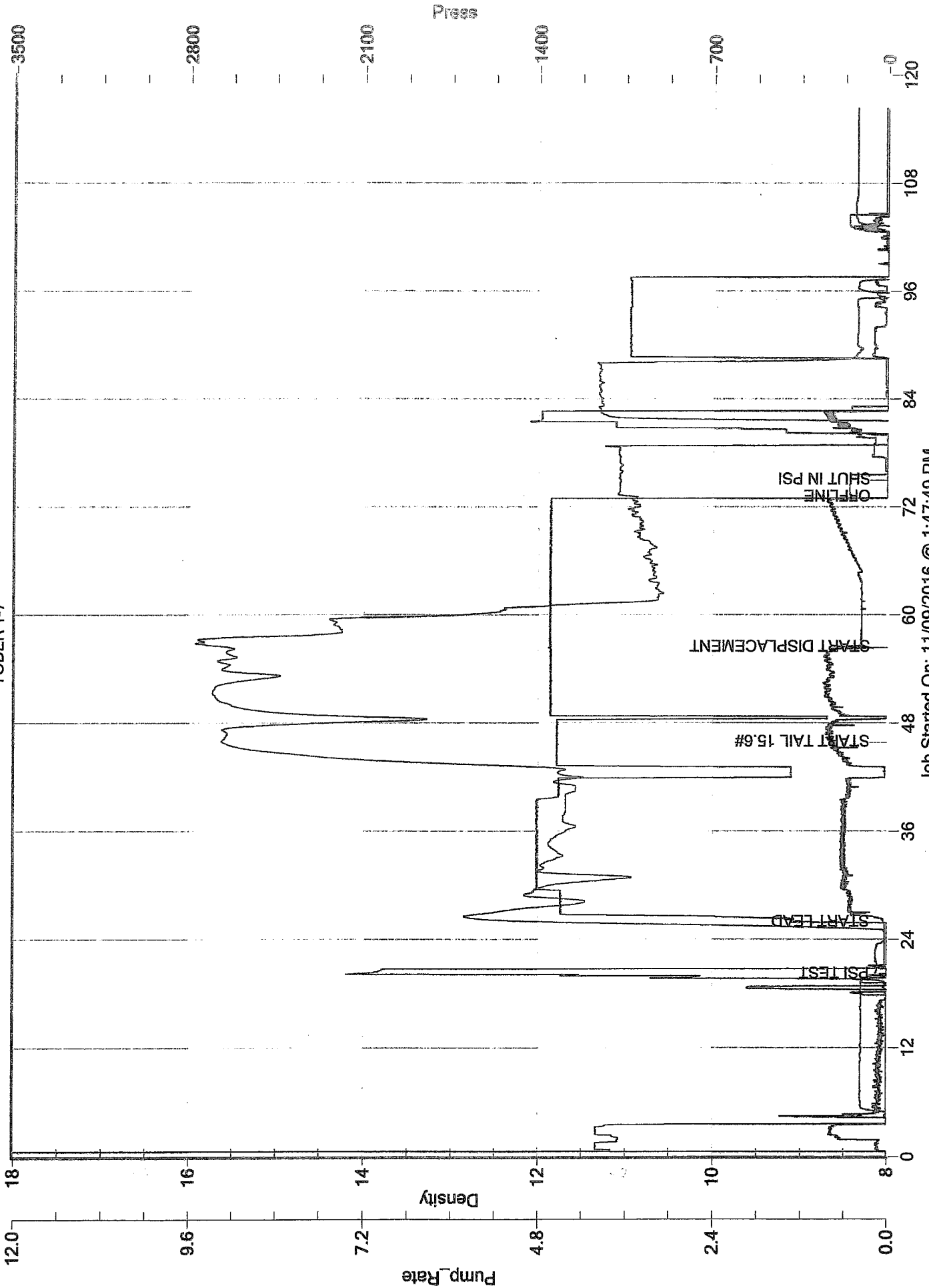
TIME	PUMP RATES		DENSITY	PRESS	STG TOT	TOTAL	REMARKS
	WATER (gpm)	PUMP (bpm)	(lb/gl)	(psi)	(bbbls)	(bbbls)	
14:08	0	0.1	8.13	1,833	5.9	5.9	PSI TEST
14:14	110	0.3	11.68	6	0.0	0.0	START LEAD
14:34	110	4.5	15.62	224	88.1	88.1	START TAIL 15.6#
14:45	0	4.6	15.54	69	136.0	136.0	START DISPLACEMENT
15:01	0	0.0	10.87	153	77.8	213.5	OFFLINE
15:03	0	0.0	11.06	153	77.8	213.5	SHUT IN PSI

Summary

Max Fl. Rate Avg Fl. Rate Max Psi Avg Psi
 4.6 3.0 2,165 131

Customer Acknowledgement:	Service Rating: <input type="checkbox"/> Satisfactory <input type="checkbox"/> Unsatisfactory	Cementer: A.HOWELL	PRODUCTS USED LEAD: ACONN CMT, 2.52 YIELD, 11.6# 3% CaCl, .25 #/SK CELL FLAKE TAIL: CLASS G CMT, 1.20 YIELD, 15.6# 2% CaCl, .25 #/SK CELL FLAKE
---------------------------	---	------------------------------	---

STELLBAR YODER 1-7



Job Started On: 11/09/2016 @ 1:47:49 PM