

GEOLOGIST'S REPORT

DRILLING TIME AND SAMPLE LOG

SUEMAUR EXPLORATION & PROD., LLC
SCHIEFERECKE TRUST #1-7
SEC. 7 TWP 6S RGE 28W
NW SE SW SE
515' FSL & 1850' FEL
SHERIDAN COUNTY, KANSAS
API: 15-179-21426-00-00

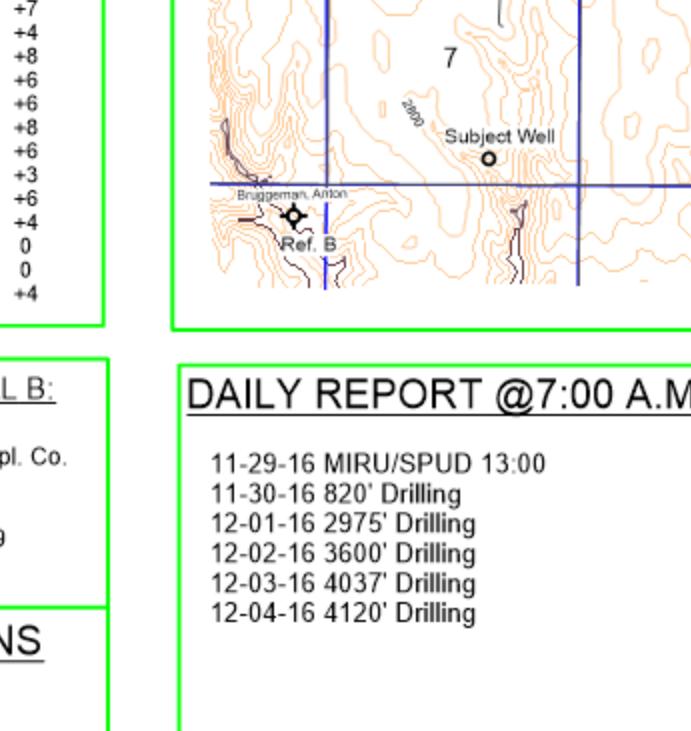
DRILLING CONTR.: MURFIN RIG #7
SPUD: 11-30-2016 COMP: XXXXXX
MUD W/ 3050' TYPE MUD: CHEM.
DRILL TIME: 3300' to RTD
RTD: 4500' LTD: xxxx'
SAMPLES SAVED: 3350' to RTD
GEOLOGIST: ROBERT J. PETERSEN

ELEVATION
KB: 2791
GL: 2796
LOG MEASURED FROM: KB

SURFACE CASING
8 5/8" Set @303' w/ 270SX
PRODUCTION CASING

WELL LOG SURVEYS
WEATHERFORD
Hi-Res AIL-DNL-ML-GR-SP

Formation	Sample Top	Datum	Ref A	Ref B
Stone Corral	2536	260	+26	+5
Base Stone Corral	2566	230	+30	+9
Foraker	3407	-611	+36	+12
Stoller	3575	-779	+31	0
Howard	3655	-859	+36	+2
Topeka	3702	-906	+37	+4
Larsh	3806	-1010	+40	+3
Lecompton	3826	-1030	+39	+3
Oread	3851	-1055	+40	+7
Heebner	3893	-1097	+38	+4
Toronto	3922	-1126	+40	+8
Lansing	3937	-1141	+39	+6
C Zone	3965	-1169	+37	+6
E/F Zone	3985	-1189	+40	+8
G Zone	4017	-1221	+38	+6
Lower G por	4033	-1237	+32	+3
Muncie Cr	4037	-1241	+40	+6
Base H Zone	4068	-1272	+40	+4
J Zone	4096	-1300	+32	0
Stark	4106	-1310	+31	0
K Zone	4115	-1319	+39	+4

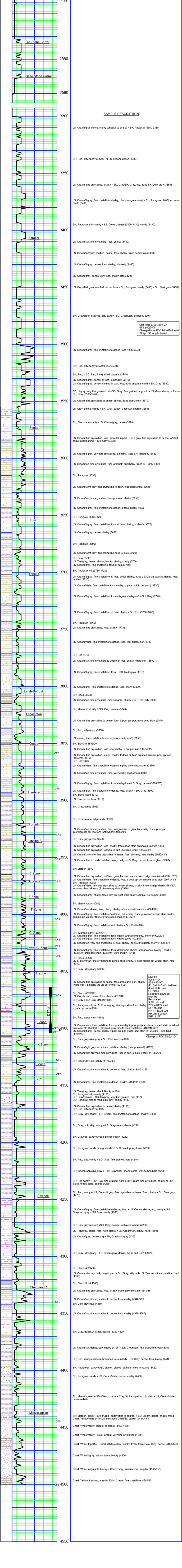


REFERENCE WELL A:
 API: 15-179-20155
 Petroleum Management Inc
 Trommeter #1
 NW SE SE SE 6-6-28W
 Lon.: -100.4797501
 Lat.: 39.5541066
 Sheridan County, KS

REFERENCE WELL B:
 API: 15-179-20737
 Diamond Shamrock Expl. Co.
 Anton Bruggeman #1
 C NE NE 13-6S-29W
 Longitude: -100.499009
 Latitude: 39.536696
 Sheridan County, KS

DAILY REPORT @7:00 A.M.
 11-29-16 MIRU/SPUD 13:00
 11-30-16 820' Drilling
 12-01-16 2975' Drilling
 12-02-16 3600' Drilling
 12-03-16 4037' Drilling
 12-04-16 4120' Drilling

REMARKS AND RECOMMENDATIONS



SAMPLE DESCRIPTION

Drill Time 3300-3500' 2X
 Bit trip @3500'
 Changed from PDC bit to Buffon bit
 Strap 1.97 long to board

DST #1
 4064-4104'
 45-60-45-90'
 IF: Built to 3/4" died back, dead at 44' min
 FF: None
 No return blows on shut-ins
 Recovered:
 5' Oil cut mud
 20% oil/80% mud
 SIP: 45-34#
 FP: 17-19/21-22#
 HP: 2108-2043#
 BHT: 117F

Change to PDC Bit @4104'