



*Depend on US*

# Post Job Report

## **Merit Energy**

Crossbow 1-11

8/23/2016

5.5" Production Casing

Grant County, KS





Table of Contents:

1.0 Executive Summary.....3

2.0 Job Summary.....4

    2.1 Job Event Log.....4

    2.2 Job Chart.....5

3.0 Water Testing.....6

4.0 Customer Satisfaction Survey.....7



Merit Energy  
Crossbow 1-11  
Grant County, KS

## 1.0 Executive Summary

Allied Oil & Gas Services would like to thank you for the award of the provision of cementing products and services on the well Crossbow 1-11.

A pre-job meeting was held to discuss job details, review the safety hazards, potential environmental impact and established emergency procedures.

Allied started the job testing lines to 2500 psi. After a successful test we began the job by plugging the rat hole and mouse hole with 50 sacks of ASC and then began pumping 12 bbls of HiVis Sweep spacer. We then mixed and pumped the following cements:

104.30 bbl	305 Sacks of 13.6 ppg
Class A Slurry -	1.92 Yield
10.0% Salt	
6.0% Gypsum	
2.0% Gel	
0.5% CFL-210	
5.0 lb Kol-Seal	
0.25 lb Cellophane Flake	

The top plug was then released and displaced with 137 Bbls of Fresh Water. The plug bumped and was pressured to 2500 psi. Upon release the floats held.

All real time data can be view in the Job Summary section.

Allied Oil & Gas Services remains committed to provide operational excellence and superior product performance. All comments and suggestions are greatly appreciated and help us to continue to provide this level of service.

Again we want to thank you for the opportunity to perform these and your future cementing & acidizing service needs.

Job Number: LIK1623081300	Job Purpose	02 Production/Long String	
Customer: MERIT ENERGY COMPANY	Date: 8-23-2016		
Well Name: Crosbow	Number: 1-11	API/UWI: 46652	
County: Grant	City:	State: KS	
Cust. Rep: RODNY	Phone:	Rig Phone:	
Distance	50 miles (one way)	Supervisor	Kenny Baeza

Employees:	Emp. ID:	Employees:	Emp. ID:
Ayala, Alejandro	0		
Gerardo B	#N/A		

Equipment:
903-541
870-744

Materials - Pumping Schedule

STAGE #1

Fluid Name	Description	Rqstd Qty	Density	Yield	Water (gal/sk)
Spacer 1	HIVIS SWEEP	12	8.40	n/a	n/a
Fluid Name	Description	Rqstd Qty	Density	Yield	Water (gal/sk)
Tail 1	ALLIED SPECIAL BLEND CEMENT - CLASS A	355	13.60	1.92	9.56
Fluid Name	Description	Rqstd Qty	Density	Yield	Water (gal/sk)
Disp. 1	Displacement	137.3385432	8.33	n/a	n/a

Slurry: Tail 1		Slurry Name: ALLIED SPECIAL BLEND CEMENT - CLASS A					
Quantity:	355 sacks	Blend Vol:	488.28 cu.ft.	cu.ft.	Blend Weight:	40897.2354 lbs	
Material	Description	Conc. (lb/sk)	Determined by	Load Volume	UOM		
CCAC	CLASS A COMMON	94	% Base Materia	33370.0	lbm		
CA-200	SODIUM CHLORIDE	7.96348	% BWOW	2827.0	lbm		
CA-500	GYP SUM	5.64	% BWOC	2002.2	lbm		
CGEL	GEL - BENTONITE	1.88	% BWOC	667.4	lbm		
CFL-210	FLUID LOSS ADDITIVE - LOW TEMP	0.47	% BWOC	166.9	lbm		
CLC-KOL	KOL-SEAL	5	lb/sk	1775.0	lbm		
CLC-CPF	CELLOPHANE FLAKES	0.25	lb/sk	88.8	lbm		
Water	Mixing Water	9.56	gal/sk	3393.8	gal		

Job Number: LIK1623081300	Job Purpose	02 Production/Long String	
Customer: MERIT ENERGY COMPANY	Date: 8-23-2016		<del>1/26/2015</del>
Well Name: Crosbow	Number: 1-11	API/UWI:	
County: Grant	City:	State: KS	
Cust. Rep: RODNY	Phone:	Rig Phone: 0	
Distance	50 miles (one way)	Supervisor	Kenny Baeza

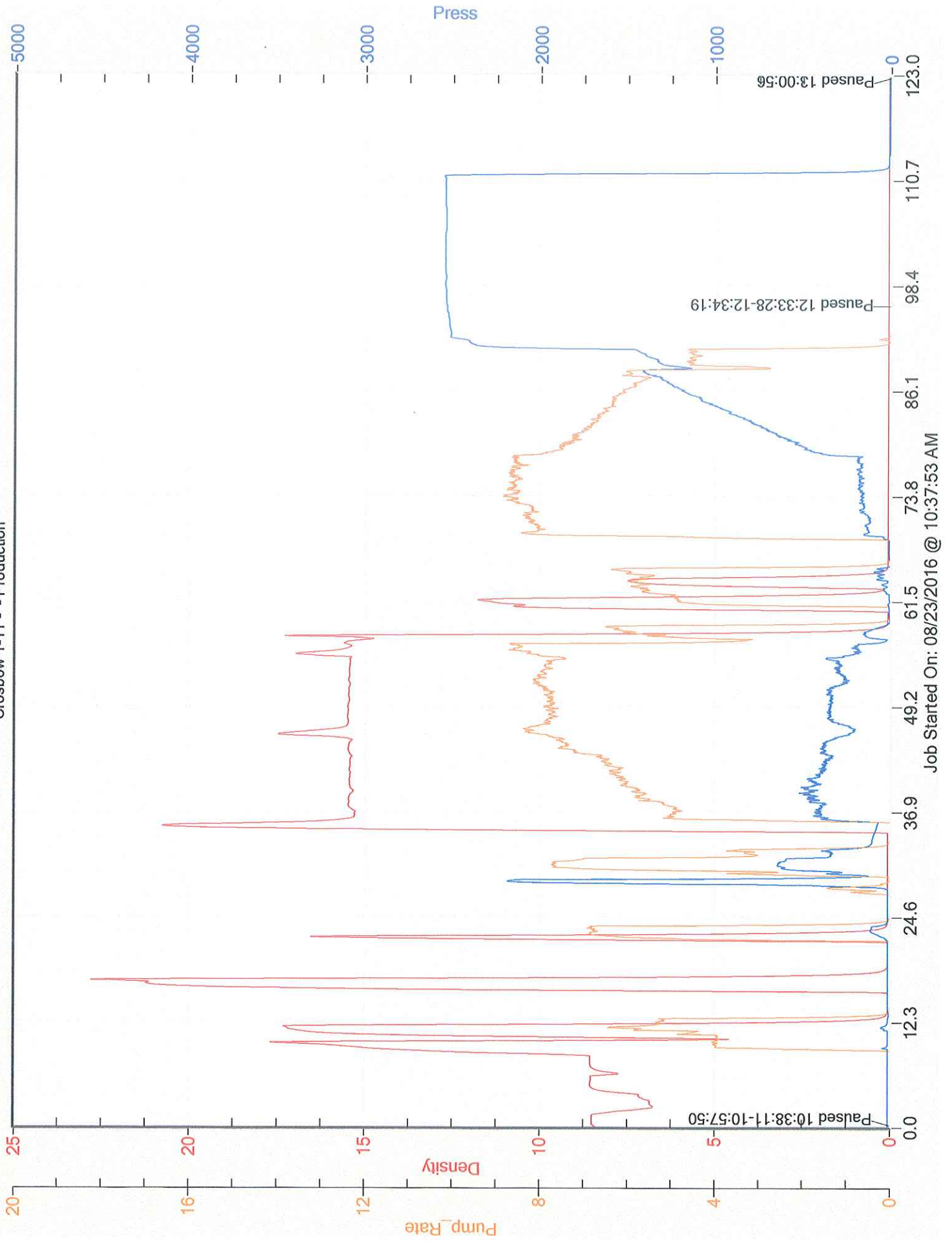
DATE	TIME	PRESSURE - (PSI)		FLUID PUMPED DATA		COMMENTS
		CASING	ANNULUS	VOLUME	RATE (BPM)	
8/23/2016	8:30:00 AM					ARRIVE ON LOCATION
8/23/16	10:20:00 AM					SAFETY MEETING
8/23/16	11:05:00 AM	0		17.1	4	PLUG RAT AND MOUSE 50SK
8/23/16	11:18:00 AM	2500		.5	.5	PRESSURE TEST LINES
8/23/16	11:20:00 AM	100		12	6	PUMP MUD FLUSH
8/23/16	11:25:00 AM	200		104.3	7	MIX 305 SACKS OF ASC
8/23/16	12:00:00 PM	0				SHUT DOWN
8/23/16	12:02:00 PM	0		10	4	WASH PUMPING LINES

*Cement Job Summary*

8/23/16	12:10:00 PM	150		0	8	DROP PLUG START DISP KCL
8/23/16	12:15:00 PM	500		70	8	COUGHT CEMENT AT
8/23/16	12:27:00 PM	800		127	5	SLOWED RATE DOWN
8/23/16	12:30:00 PM	2500		137		LAND PLUG
8/23/16	12:31:00 PM	2500				PRESSURE TEST CASING 15 MIN
8/23/16	12:49:00 PM	0				RELEASED PRESS 1 BBL BACK
8/23/16	12:50:00 PM	0				FLOATS HOLDING
8/23/16	12:51:00 PM					RIG DOWN

# Merit Energy

Crosbow 1-11 - - Production





CEMENT MIXING WATER GUIDELINES

Company Name:

MERIT ENERGY COMPANY

Lease Name:

Crosbow # 1-11

County

Grant

State

KS

Water Source:

TANK

Submitted By:

Kenny Baeza

Date:

8/23/2016

pH Level

Good

Must be less than 8.5

Sulfates

Good

Must be less than 1,000 PPM

Chlorides

Good

Must be less than 3,000 PPM

Temperature

75 deg

Must be less than 100 deg F

COMMENTS

[Empty box for comments]

Thank You

Customer Signature

