

SCHLUMBERGER

INDUCTION - ELECTRICAL LOG

SCHLUMBERGER WELL SURVEYING CORPORATION

Houston, Texas

COUNTY RAWLINS
 FIELD or WILDCAT WILDCAT
 LOCATION SEC. 19-1S-32W
 WELL MUSTERMANN NO. 1
 COMPANY EMPIRE DRILLING

COMPANY EMPIRE DRILLING COMPANY
 WELL MUSTERMANN NO. 1
 FIELD WILDCAT
 COUNTY RAWLINS
 STATE KANSAS

Please Return
EMPIRE DRILLING COMPANY
 SUITE 1750, 125 N. MARKET
 ST. MICHAEL, KANSAS 67202

LOCATION SE-SW
 Sec. 19 Twp. 1S Rge. 32W

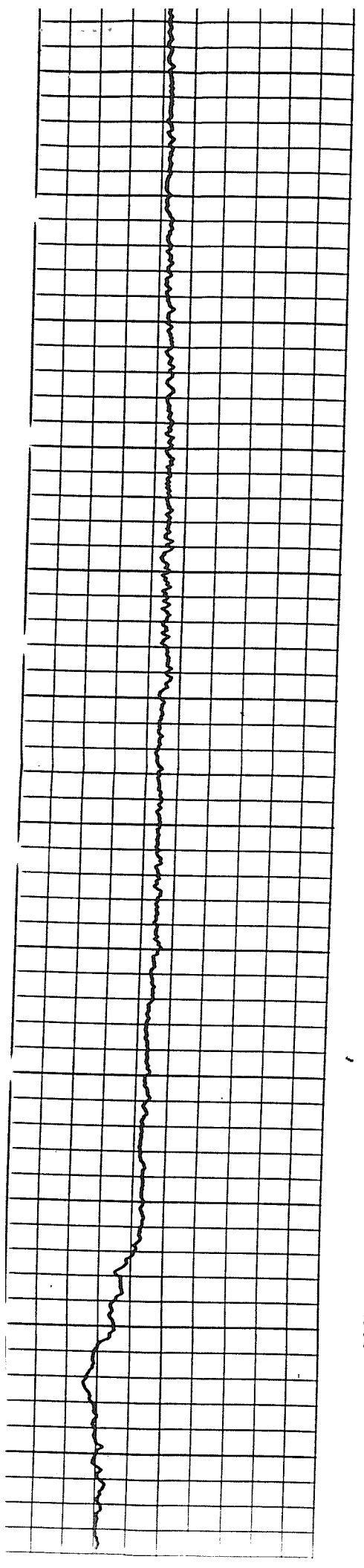
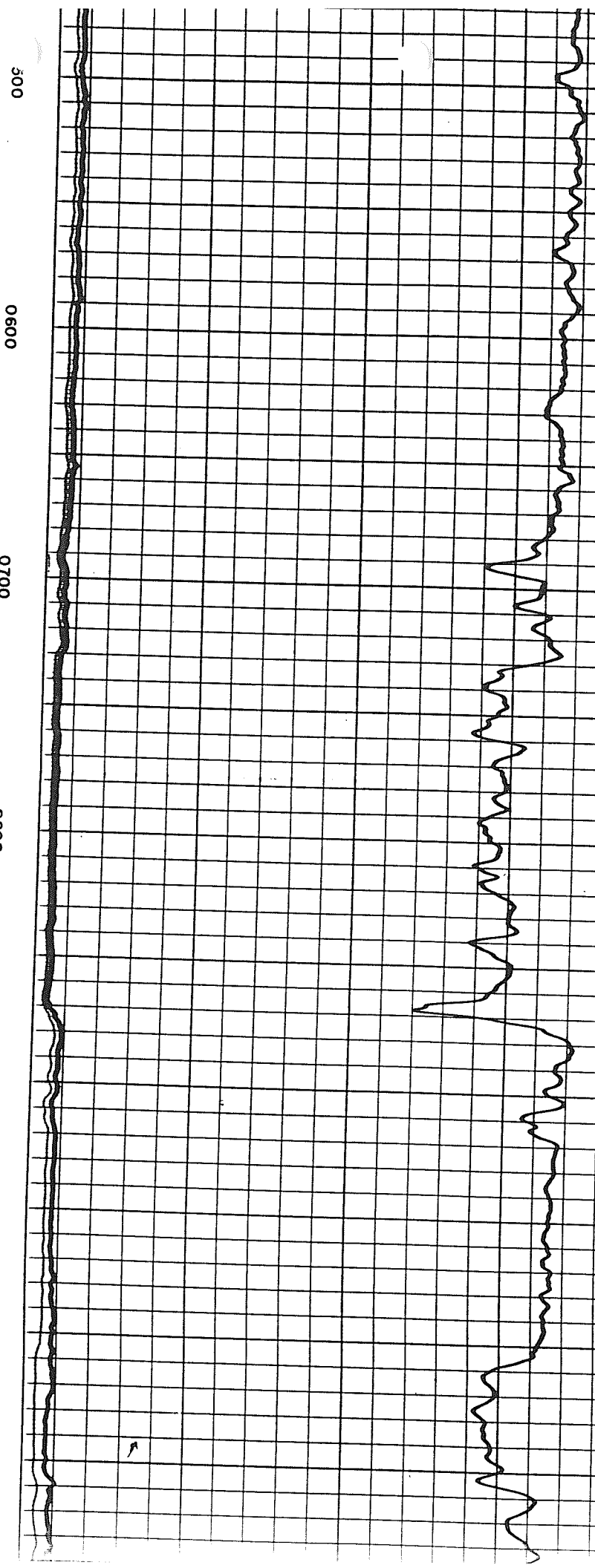
Other Services:
SL-CAL.

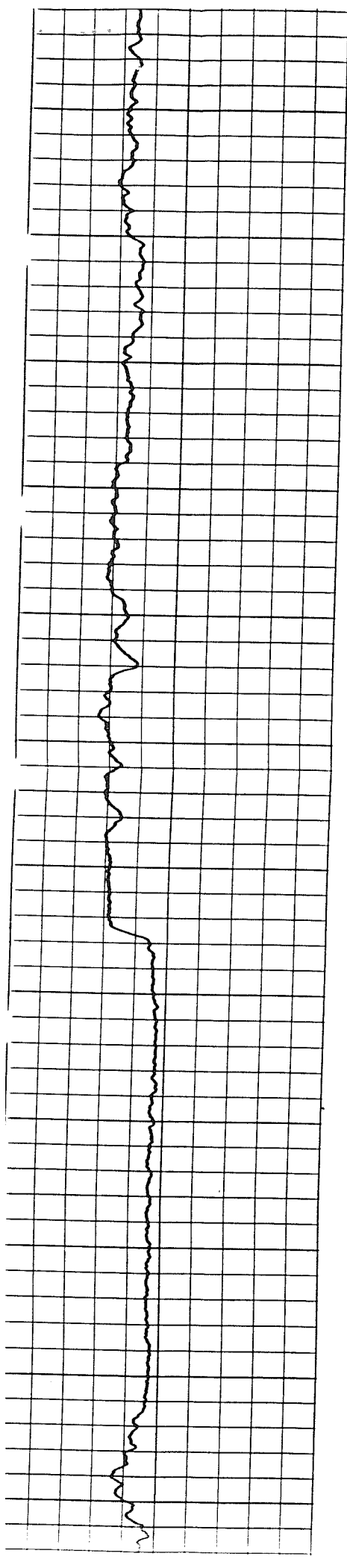
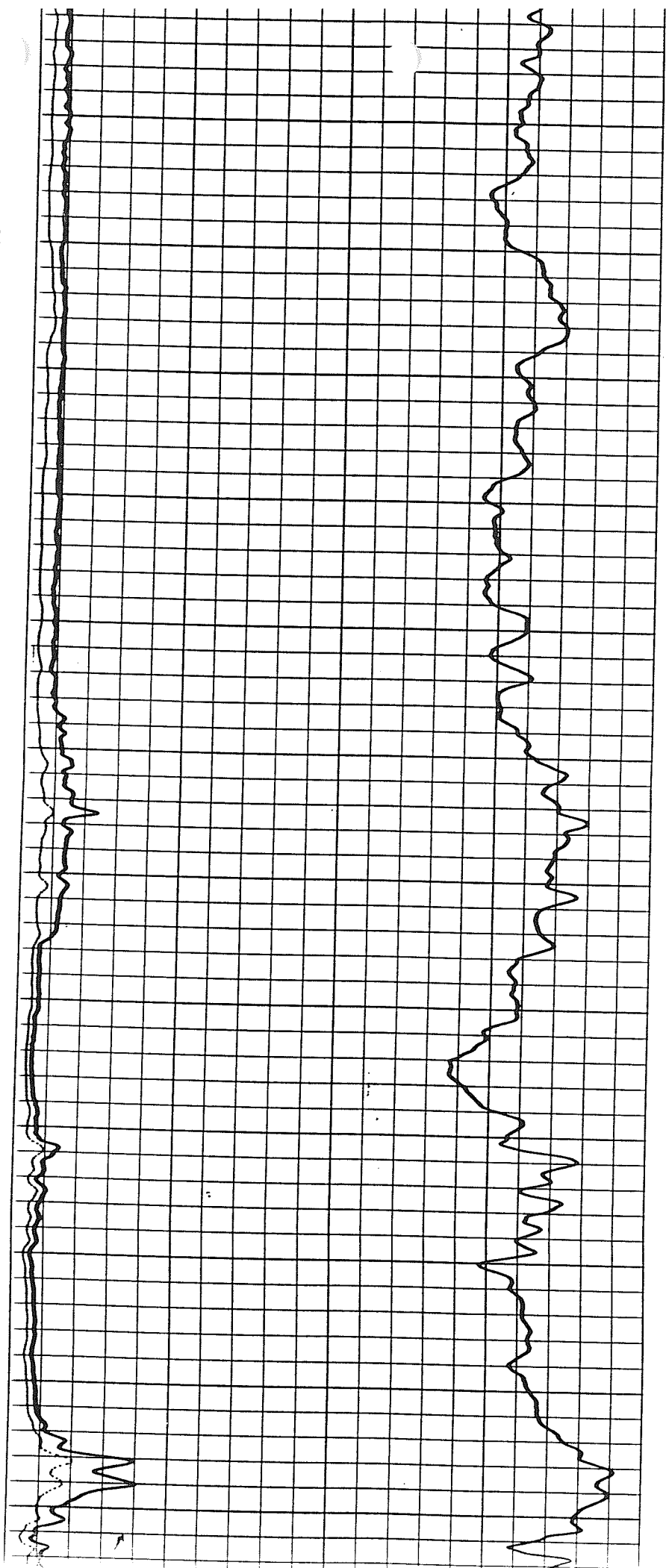
Permanent Datum: G. L., Elev. 3021
 Log Measured From K. B., 4 Ft. Above Perm. Datum
 Drilling Measured From K. B.

Elev.: K.B. 3025
 D.F. 3022
 G.L. 3021

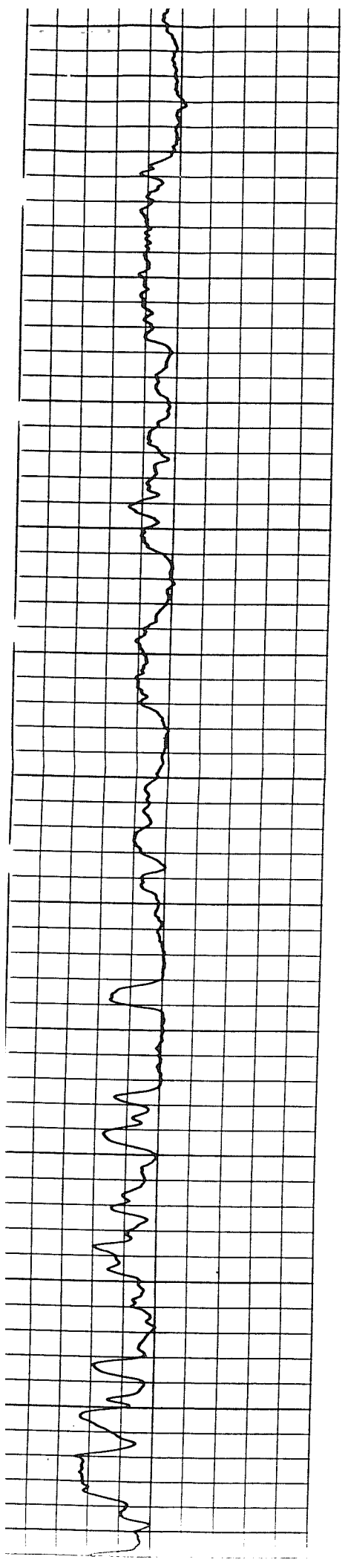
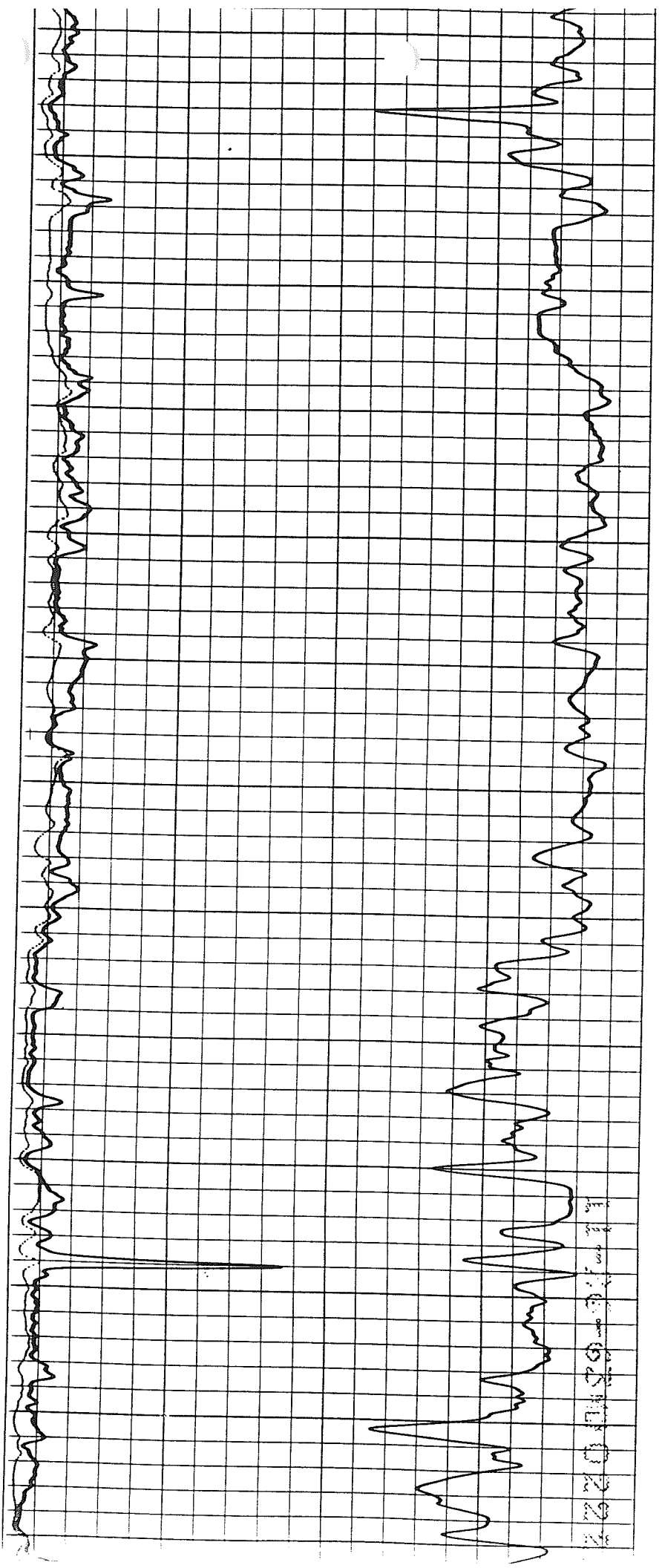
Date	11-26-63					
Run No.	ONE					
Depth—Driller	4260					
Depth—Logger	4261					
Btm. Log Interval	4260					
Top Log Interval	282					
Casing—Driller	8-5/8@	290	@	@	@	@
Casing—Logger	282					
Bit Size	7-7/8"					
Type Fluid in Hole	CHEMICAL & OIL					
Dens.	Visc.	9.8	42			
pH	Fluid Loss	7	25.4ml	ml	ml	m
Source of Sample	CIRCULATED					
R _m @ Meas. Temp.	2.3 @ 62 °F	@ °F	@ °F	@ °F	@ °F	@ °F
R _{mt} @ Meas. Temp.	1.4 @ 65 °F	.90 @ 105 °F	@ °F	@ °F	@ °F	@ °F
R _{mc} @ Meas. Temp.	@ °F	@ °F	@ °F	@ °F	@ °F	@ °F
Source: R _{mt} R _{mc}	M					
R _m @ BHT	1.4 @ 105 °F	@ °F	@ °F	@ °F	@ °F	@ °F
Time Since Circ.	NONE					
Max. Rec. Temp.	105 °F	°F	°F	°F	°F	°F
Equip. Location	2923	MC COOK				
Recorded By	ROGER MC FADIN					
Witnessed By	MR. TAYLOR					

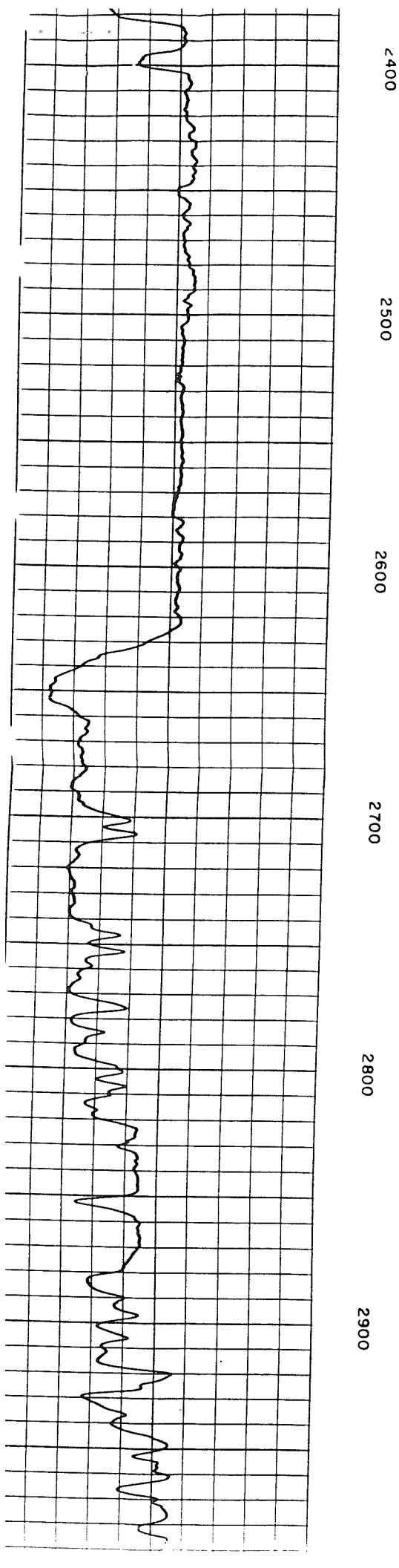
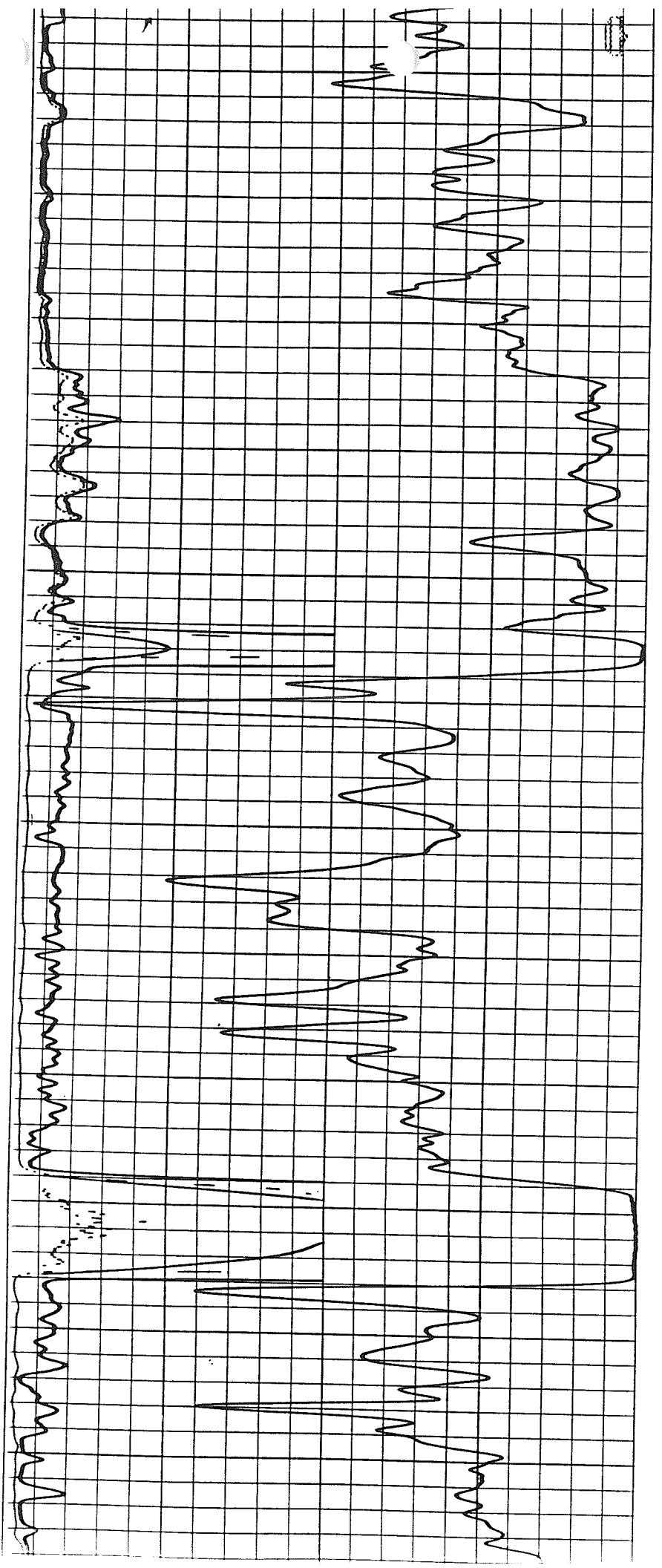
621022195

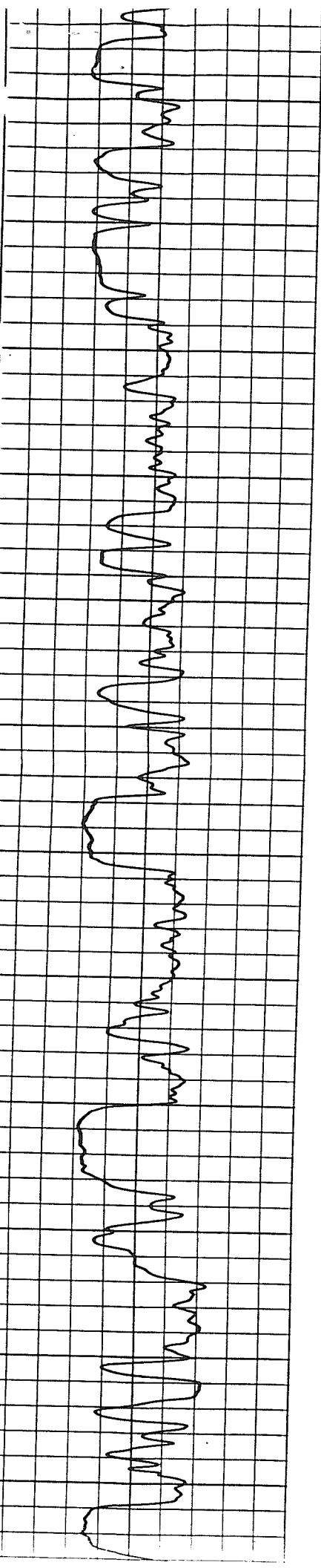
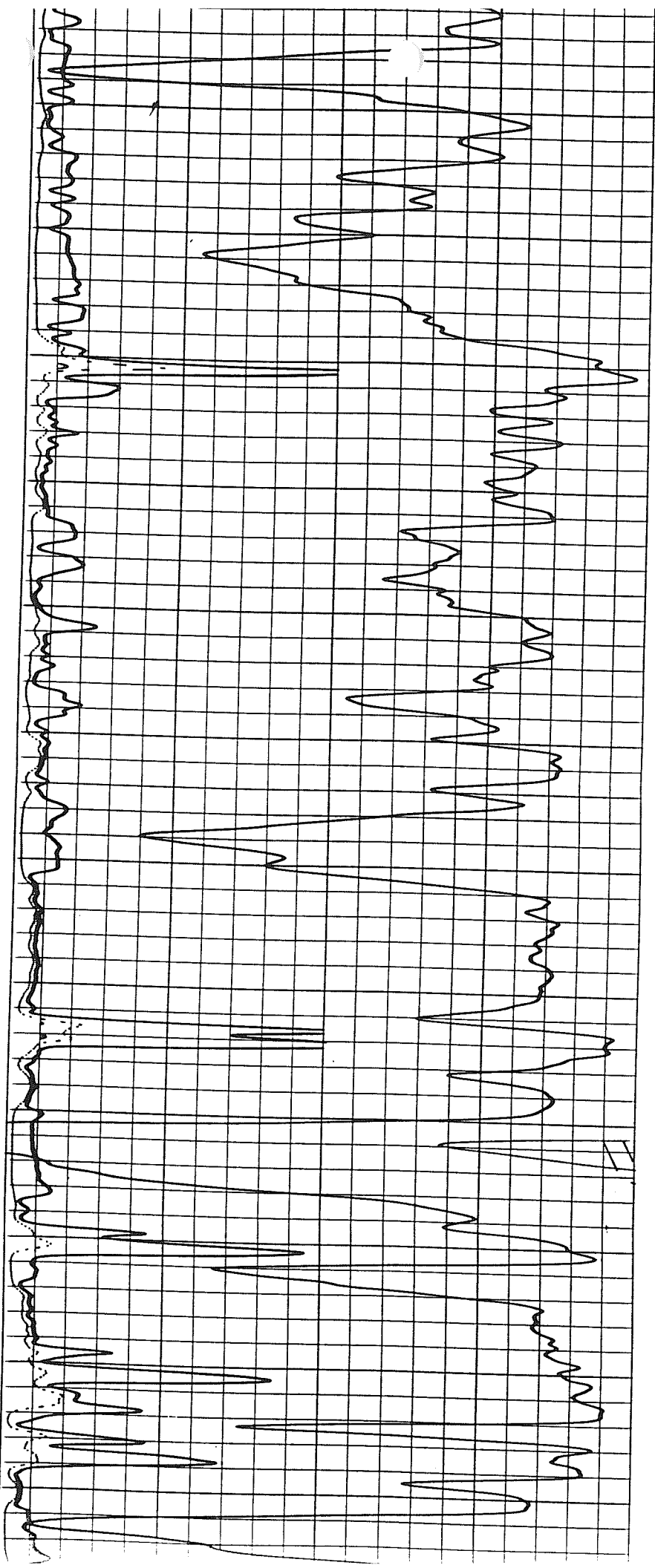


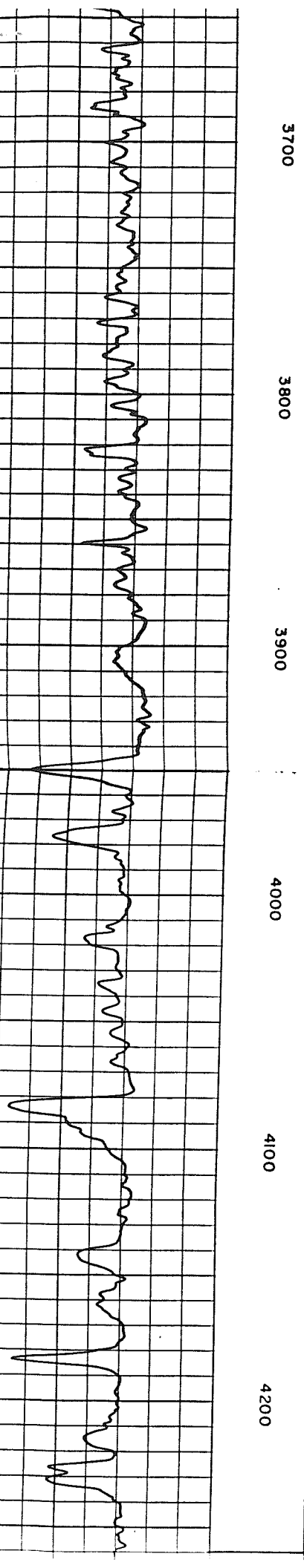
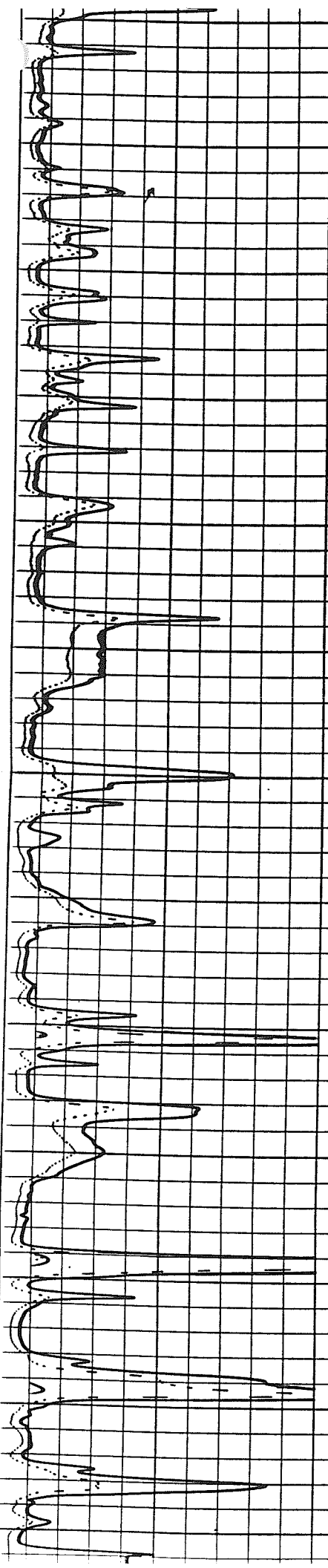


1.1 cm 10-65-110222









3700 3800 3900 4000 4100 4200